

# BEETLE /iPOS plus

## How to update the touch firmware

2014.4.29

### 1. Purpose :

Describe the touch firmware update procedure in Win7.






#### a. Touch Firmware Binary :

Version : 1.001

 Mastouch\_15p\_30x40\_7595v1001-Test\_USB\_2pt.egxp

#### b. Update Utility (in Win7 32bit) : eGalaxUpdate.exe

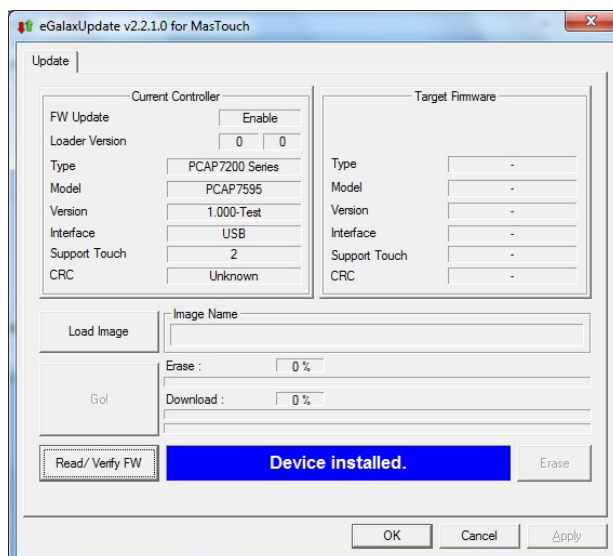
Version : 2.2.1.0

	eGalaxUpdate.exe	2011/3/31 下午 04:11
	eGalaxUpdate.ini	2010/12/24 上午 12:24
	FW_UpdateResult.txt	2014/4/10 下午 06:33
	HIDdAPI.dll	2011/3/21 下午 08:15
	xktutility.dll	2010/6/19 上午 11:50

### 2. Step :

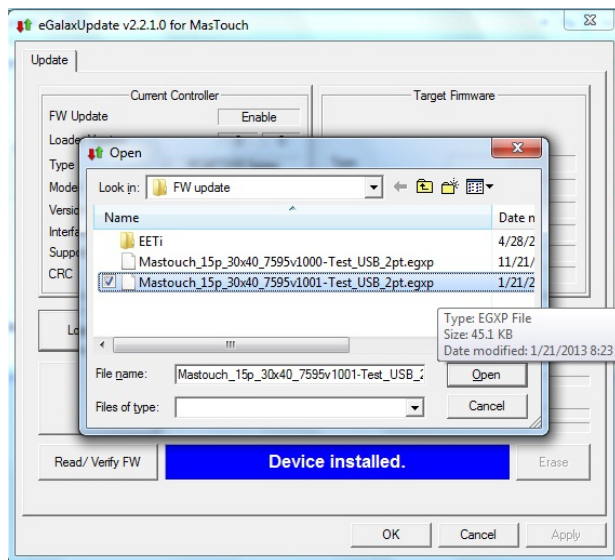
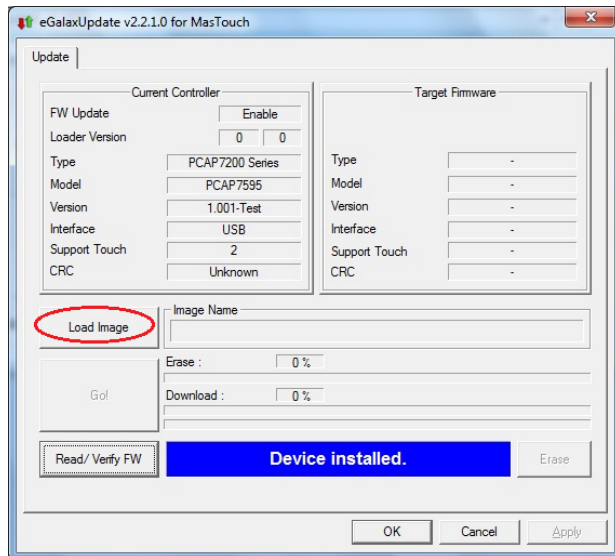
#### a. Start “eGalaxUpdate.exe” in Win7 32-bit.

Utility will get current firmware version “1.000”.



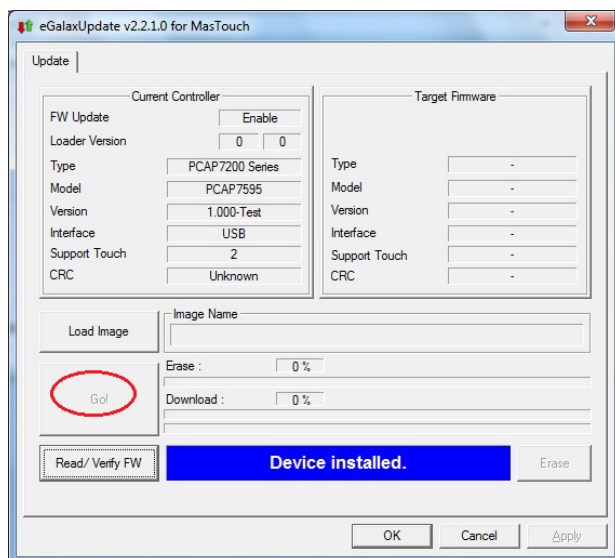
#### b. Press button “Load Image” to select firmware file

“Mastouch\_15p\_30x40\_7595v1001-Test\_USB\_2pt.egxp”.

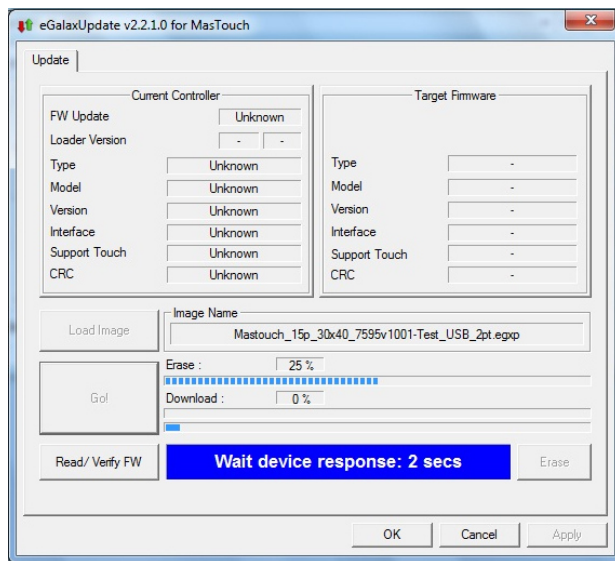


- c. Press button “Go!” to burn firmware image.

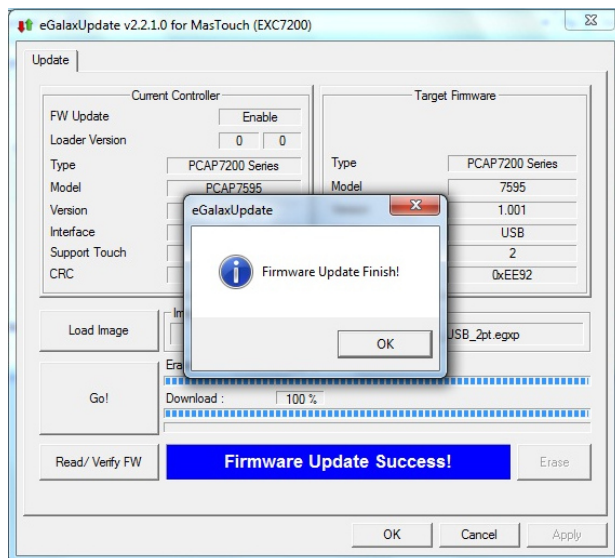
**Warning : Don't use mouse and touch during firmware update.**



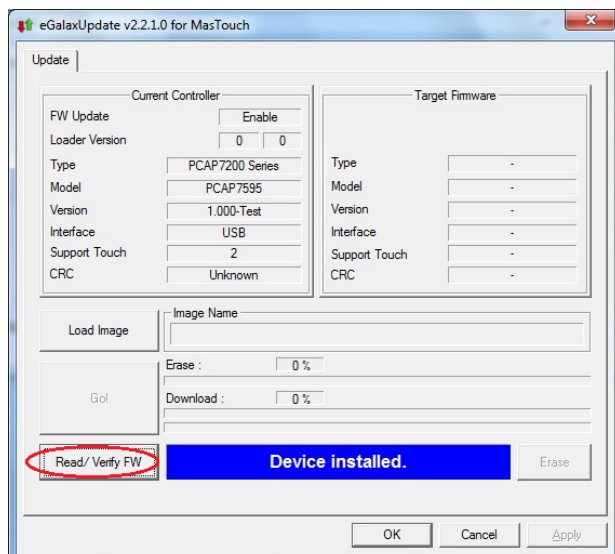
## Writing firmware to EEPROM...



## Write done



- d. Press button “Read/Verify FW” to verify firmware.



Verify Pass.

eGalaxUpdate v2.2.1.0 for MasTouch (EXC7200)

Update

Current Controller		Target Firmware	
FW Update	Enable	Type	PCAP7200 Series
Loader Version	0 0	Model	7595
Type	PCAP7200 Series	Version	1.001
Model	PCAP7595	Interface	USB
Version	1.001-Test	Support Touch	2
Interface	USB	CRC	0xEE92
Support Touch	2		
CRC	0xEE92		

Load Image

Image Name

Mastouch\_15p\_30x40\_7595v1001-Test\_USB\_2pt.egxp

Go!

Erase : 100 %

Download : 100 %

Read/ Verify FW

**Verify Pass!**

Erase

OK Cancel Apply