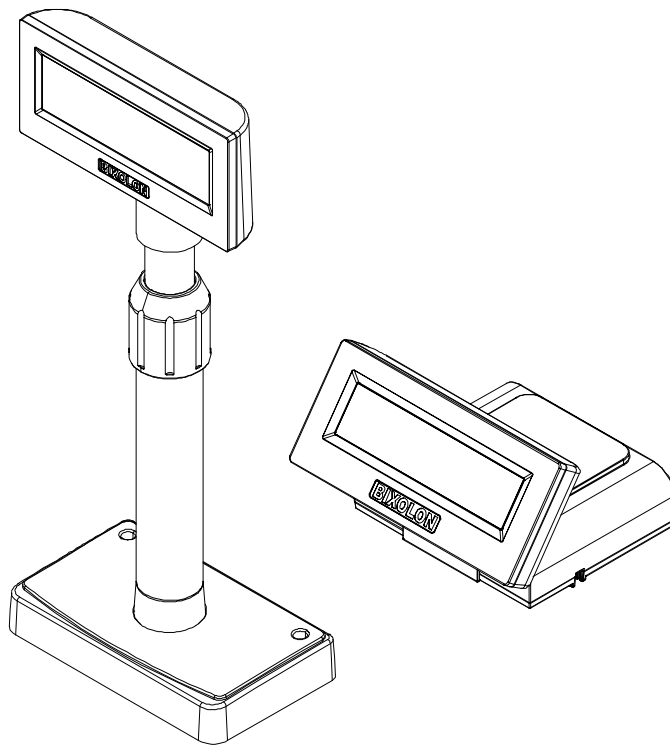


**BIXOLON®**

**Virtual COM Driver Manual**  
**BCD Series**

---

**Customer Display**  
**Rev. 2.00**



<http://www.bixolon.com>

## **Introduction**

This Virtual COM Driver Installation Manual provides information on installation and uninstallation.

It is advisable to read the contents of this manual carefully before using the customer display for the first time.

We at BIXOLON maintain ongoing efforts to enhance and upgrade the functions and quality of all our products. In following, product specifications and/or user manual content may be changed without prior notice.

# **Table of Contents**

- 1. Operating System (OS) Environment .....4**
- 2. Virtual COM Driver Preparation.....4**
- 3. Virtual COM Driver Installation & Uninstallation .....5**
  - 3-1 Installation.....5
  - 3-2 Uninstallation.....10

## **1. Operating System (OS) Environment**

- The following operating systems are supported for usage.

Microsoft® Windows XP SP3 (32bit)  
Microsoft® Windows XP SP1 or later (64bit)  
Microsoft Windows Server 2003 SP1 or later (32bit/64bit)  
Microsoft Windows VISTA (32bit/64bit)  
Microsoft Windows Server 2008 (32bit/64bit)  
Microsoft Windows Server 2008R2 (64bit)  
Microsoft Windows 7 (32bit/64bit)  
Microsoft Windows 8 (32bit/64bit)  
Microsoft Windows Server 2012 (64bit)  
Microsoft Windows 10 (32bit/64bit)

## **2. Virtual COM Driver Preparation**

- The Virtual COM Driver is included in the enclosed CD, and the latest file version can be downloaded from BIXOLON website. ([www.bixolon.com](http://www.bixolon.com))

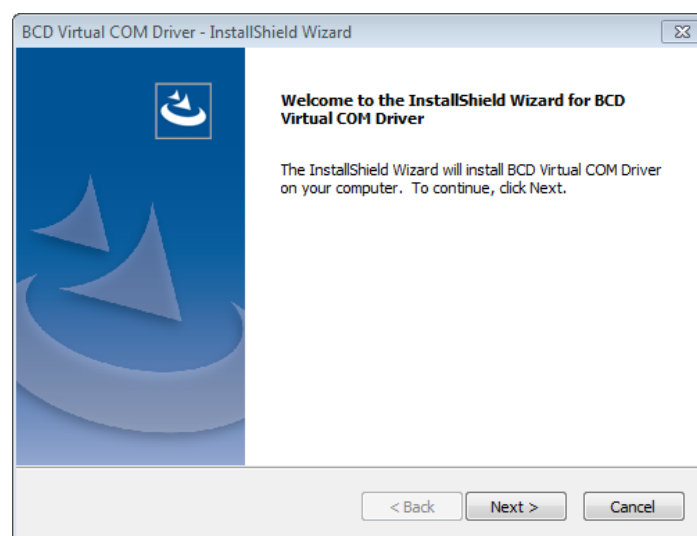
## 3. Virtual COM Driver Installation & Uninstallation

- Installation and uninstallation process in this document is written based on Windows 7.

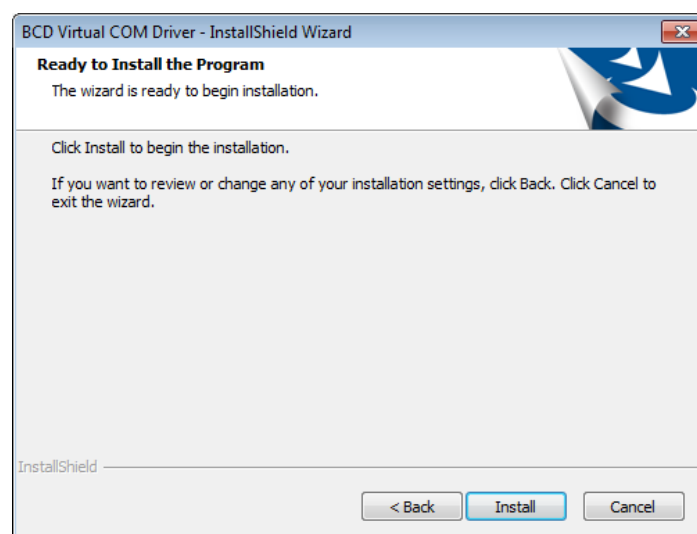
### 3-1 Installation

**Caution or warning** - Install with all the cables disconnected from the display device.

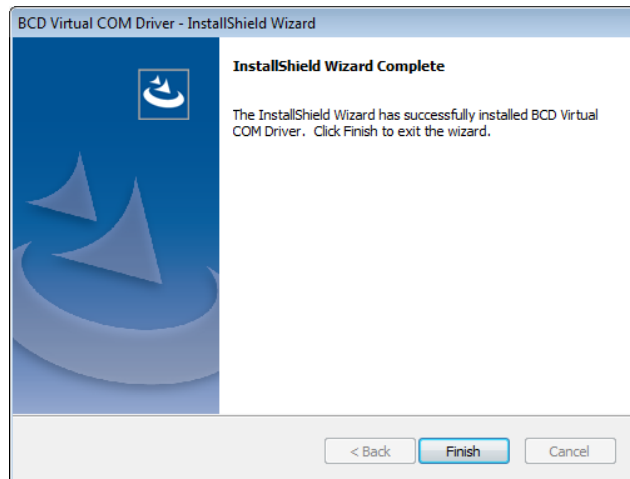
- 1) Execute the installation file. (BCD\_VCOM4USB\_Vx.x.x.exe)
- 2) Click the “Next” button.



- 3) Click “Install” to begin the installation.

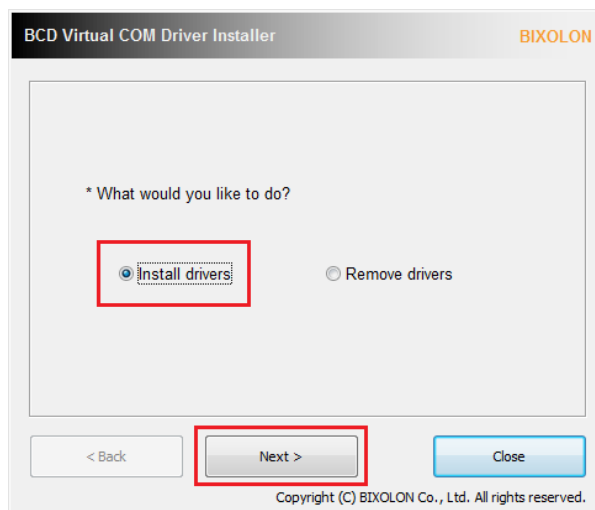


4) Click “Finish”.

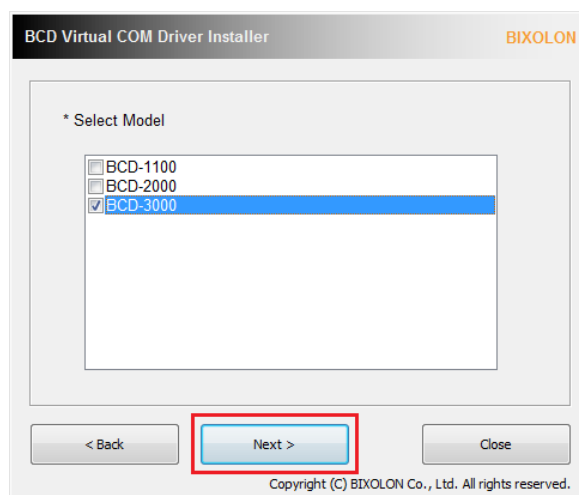


5) Select from “Start ► All Programs ► BIXOLON” and open “BCD VCOM Driver Installer”.

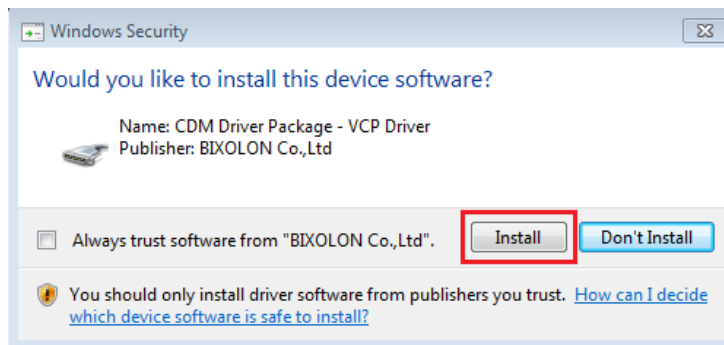
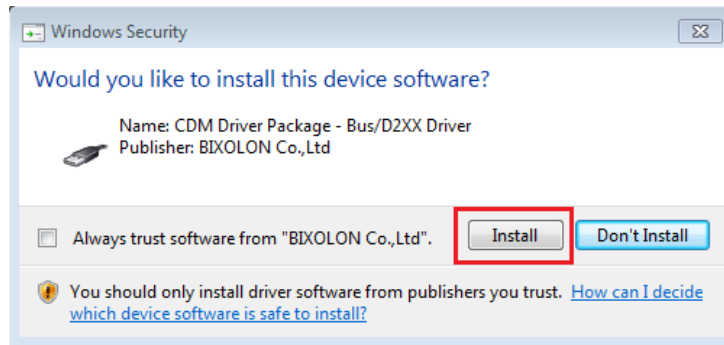
6) Choose “Install drivers” option and click “Next”.



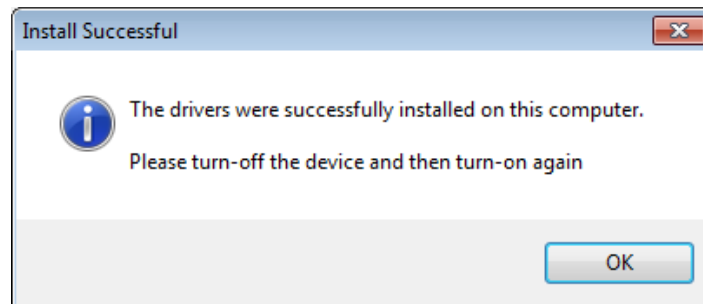
7) Check the model for installation and click “Next”.



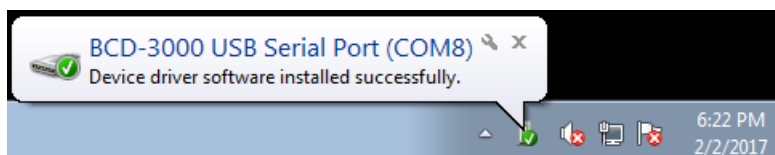
8) When the following message box appears, click the "Install" button.



9) The following message appears upon the successful completion of installation.

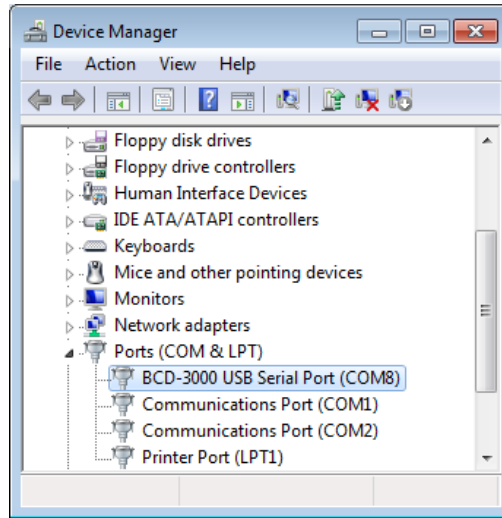


10) The installation starts when connecting the display device to the PC. The following message will appear at the bottom-right corner of the screen as shown in the image when the installation is complete.

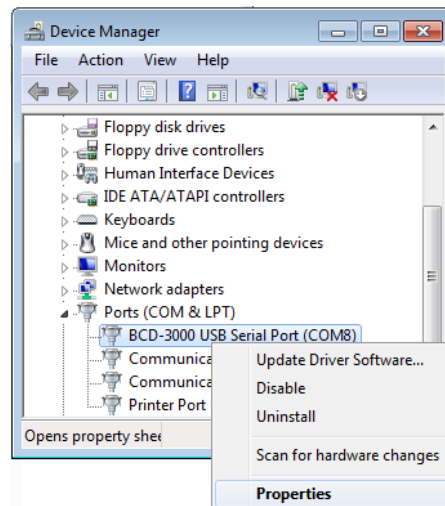


11) Go to Control Panel ► System ► Device Manager: Upon examination of the ports (COM & LPT) section and check the BCD-xxx USB Serial Port (COMx).

\* The COM port is automatically numbered, and it varies according to PC port occupation conditions.

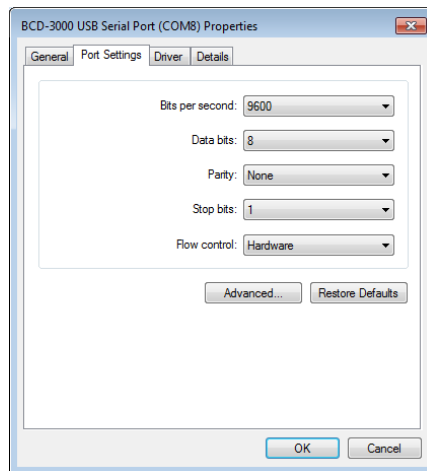


12) Select BCD-xxx USB Serial Port(COMx) and right-click. Then select Properties.





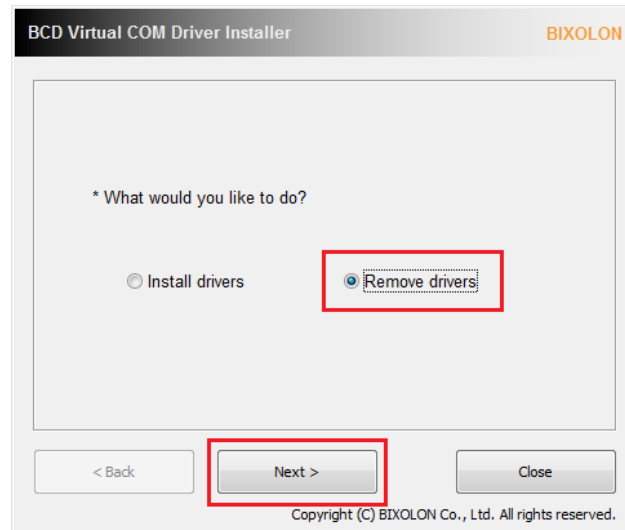
13) Check the serial communication settings.



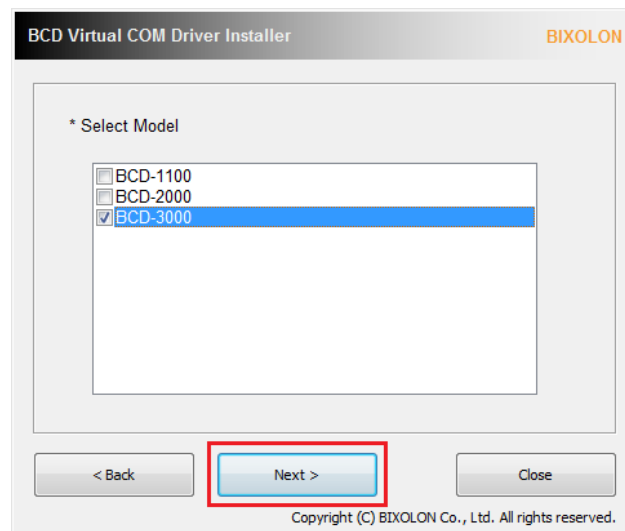
**Caution or warning** - The flow control option should be set to "Hardware".

**3-2 Uninstallation**

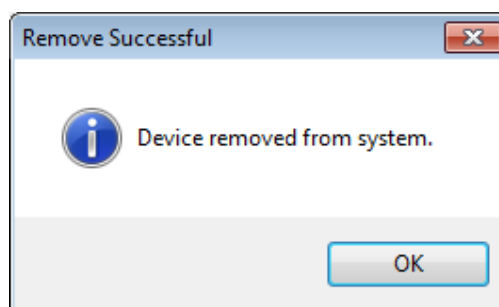
- 1) Select from “Start ► All Programs ► BIXOLON” and open “BCD VCOM Driver Installer”.
- 2) Choose “Remove drivers” and click “Next”.



- 3) Check the model to remove and click “Next”.



- 4) The following message appears upon the successful completion of uninstallation



## **Copyright Owned by BIXOLON**

This User Manual and product are protected under copyright law.

It is strictly prohibited to copy, duplicate, translate or convert into electronic form the whole or any part of the manual and product without the prior written approval of BIXOLON.

BIXOLON maintains ongoing efforts to enhance and upgrade the functions and quality of all our products. In the following, product specifications and/or user manual content may be changed without prior notice.

The BIXOLON logo is the registered trademark of BIXOLON.

## **Warning - U.S.A**

This equipment has been tested and found to comply with the limits for a Class A digital device pursuant to Part 15 of the FCC Rules. These limits are designed to provide reasonable protection against harmful interference when the equipment is operated in a commercial environment. This equipment generates uses, and can radiate radio frequency energy and, if not installed and used in accordance with the instruction manual, may cause harmful interference to radio communications. Operation of this equipment in a residential area is likely to cause harmful interference in which case the user will be required to correct the interference at his own expense.

## **Notice - Canada**

This Apparatus complies with class "A" limits for radio interference as specified in the Canadian department of communications radio interference regulations. Get appareil est conforme aux normes class "A" d'interference radio tel que specifier par ministre canadien des communications dans les reglements d'interference radio.

## **Caution**

Some semiconductor devices are easily damaged by static electricity. You should turn the printer "OFF", before you connect or remove the cables on the rear side, in order to guard the printer against the static electricity. If the printer is damaged by the static electricity, you should turn the printer "OFF".

Copyright © BIXOLON Co., Ltd. 2016-2017. All rights reserved.

## Revision history

Rev.	Date	Page	Description
2.00	13.03.17	-	New