

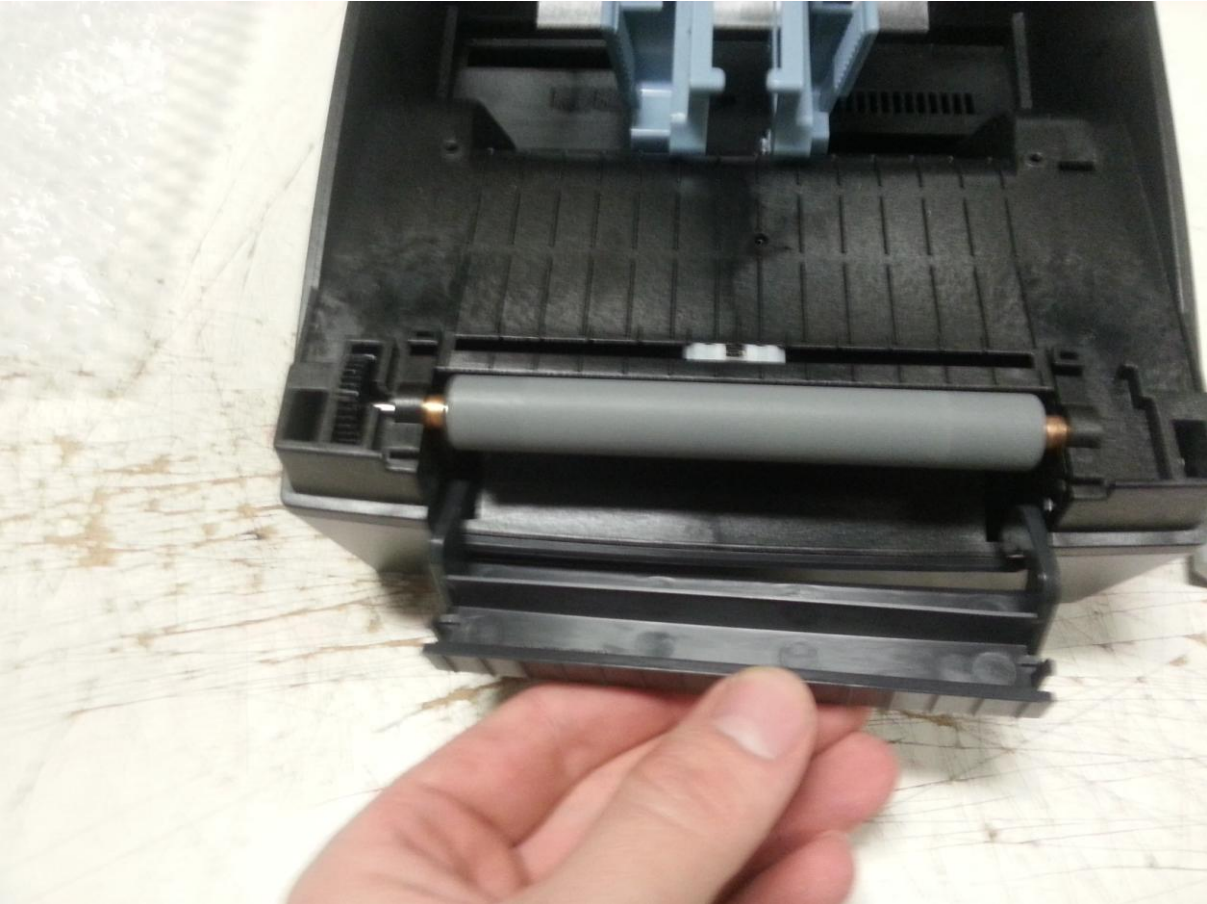
Needed material: SLP-DX420 + Cutter (AU04-00010B-AS)



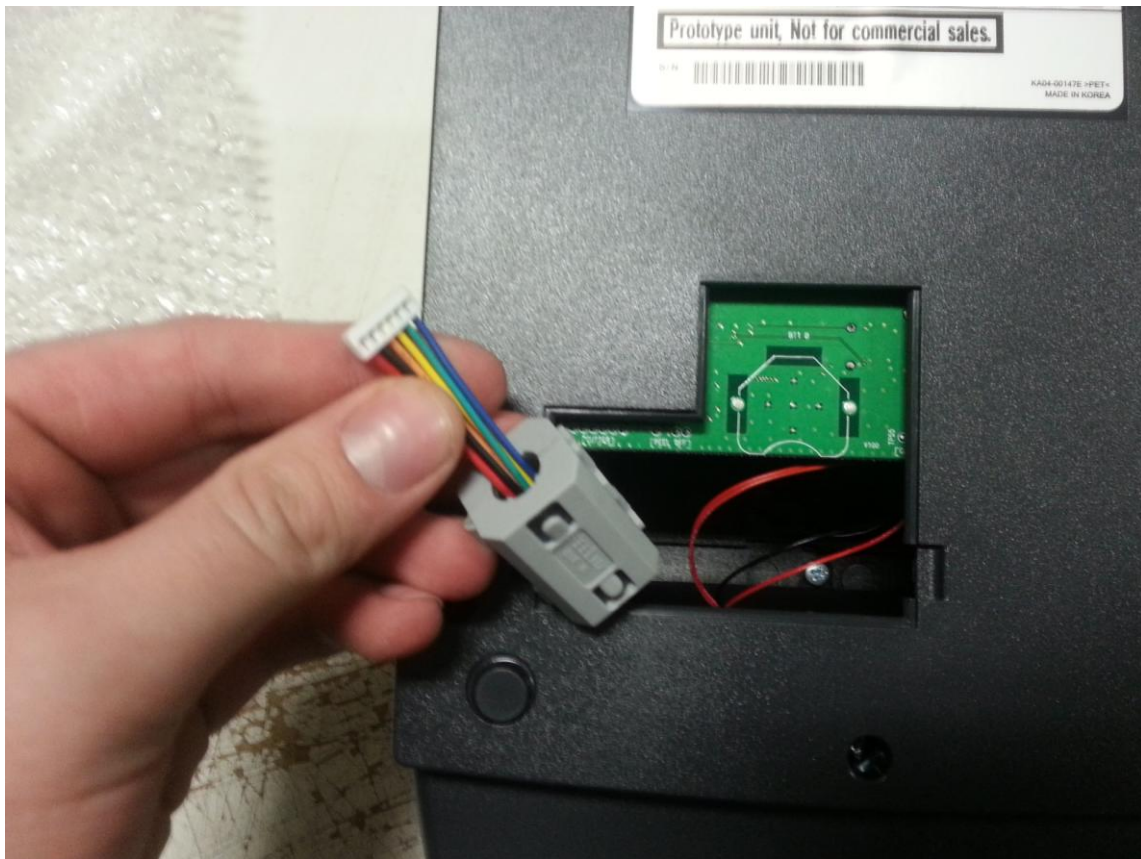
Disconnect the supressor magnet at the cable:



Disconnect the old Paper guide and connect the Cutter:



Attach the magnet again:



Connect the Cutter to the Mainboard:



Now connect Printer to the PC and turn on Cutter with Unified Label Utility tool.

