

**BIXOLON®**

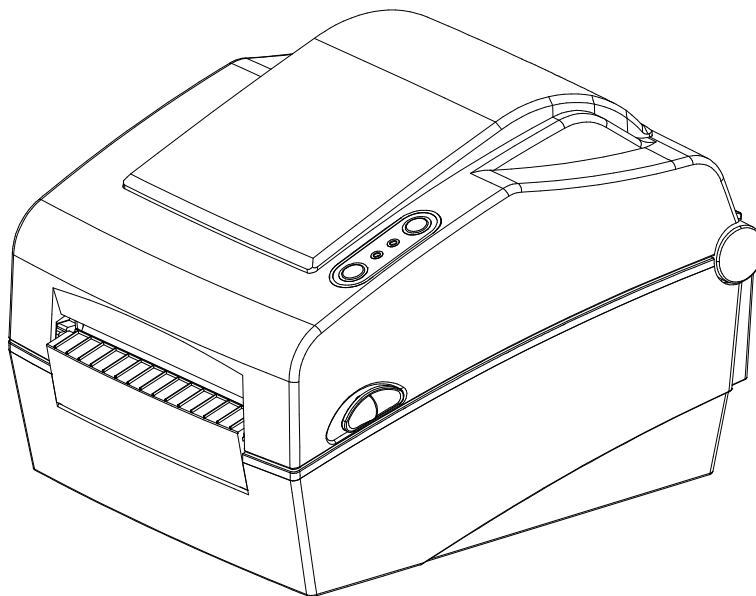
# Windows Driver Manual

# Label Printer

---

**Rev. 1.00**

**SLP-DX420 / DX420E**  
**SLP-DX423 / DX423E**



<http://www.bixolon.com>

**■ Table of Contents**

**1. Manual Information.....3**

**2. Operating System (OS) Environment.....3**

**3. Windows Driver Preparation .....3**

**4. Windows Driver Installation .....4**

    4-1 Installing on Windows XP/2003 Server.....4

        4-1-1 Via Serial or Parallel port.....4

        4-1-2 Via USB.....8

    4-2 Installing Windows VISTA/2008 Server/7/8.....14

        4-2-1 Via Serial or Parallel.....14

        4-2-2 Via USB.....18

**5. Detailed Windows Driver Settings.....22**

    5-1 Printing Preferences .....22

    5-2 Adding new paper size.....23

**6. Specifications.....25**

    6-1 Resolution.....25

    6-2 Paper Size .....25

## **1. Manual Information**

This Windows Driver Installation Manual provides information on installation, detailed specifications, and usage of the printer's Windows Driver according to PC operating system (OS).

We at BIXOLON maintain ongoing efforts to enhance and upgrade the functions and quality of all our products. In following, product specifications and/or user manual content may be changed without prior notice.

## **2. Operating System (OS) Environment**

The following operating systems are supported for usage.

- Microsoft Windows XP (32bit, 64bit)
- Microsoft Windows 2003 Server (32bit, 64bit)
- Microsoft Windows VISTA (32bit, 64bit)
- Microsoft Windows 2008 Server (32bit, 64bit)
- Microsoft Windows 2008 Server R2(64bit)
- Microsoft Windows 7 (32bit, 64bit)
- Microsoft Windows 8 (32bit, 64bit)
- Microsoft Windows 2012 Server

## **3. Windows Driver Preparation**

The Windows Driver is included in the enclosed CD, and Latest file versions can be downloaded from the BIXOLON website.

[www.bixelon.com](http://www.bixelon.com)

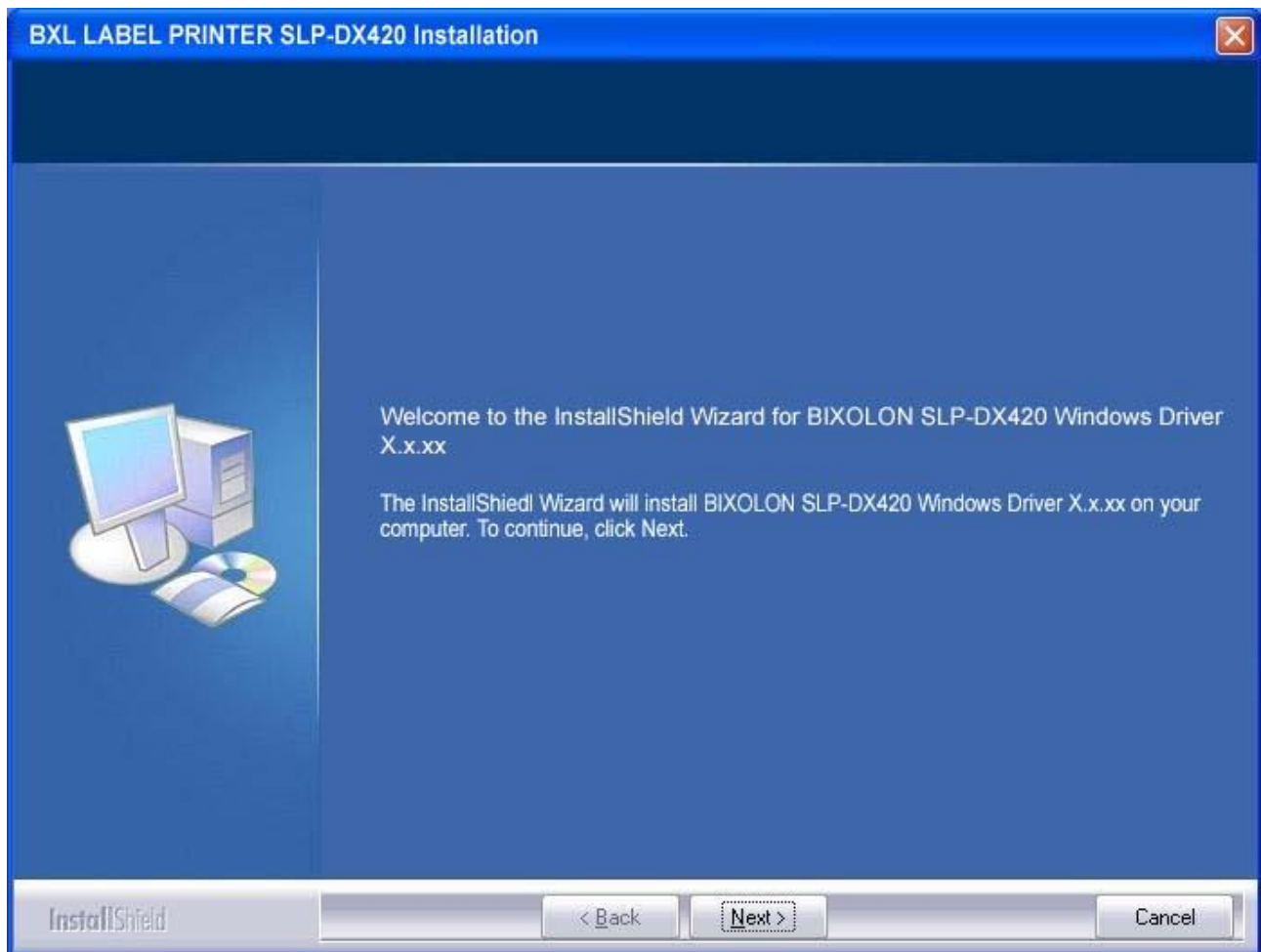
The installation file name is SLP-DX42x\_Vx.x.xx.exe  
eg ) SLP-DX420\_V5.0.02.exe, SLP-DX423\_V5.0.02.exe

## **4. Windows Driver Installation**

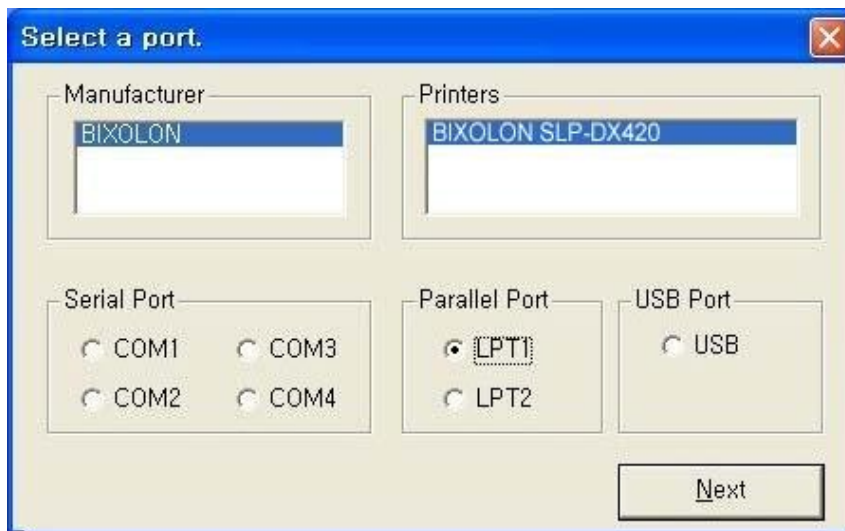
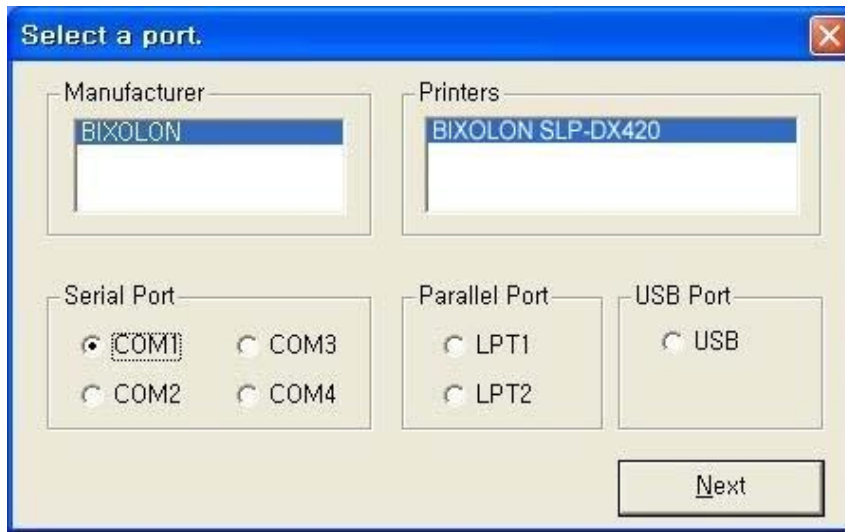
### **4-1 Installing on Windows XP/2003 Server**

#### 4-1-1 Via Serial or Parallel port

- 1) Double-click the Windows Driver installation file.
- 2) Click the “Next” button.



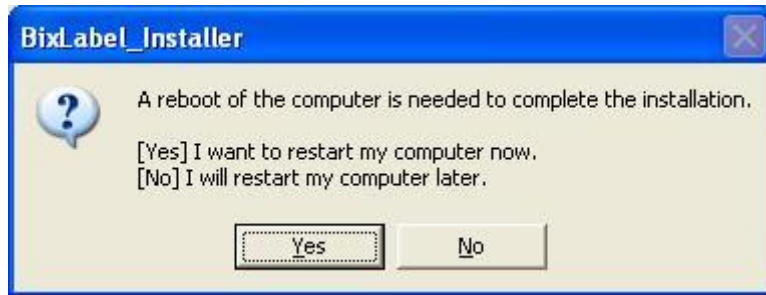
3) Select the COM or LPT (Which one you want to use) port to be used and click the “Next” button.



4) When the following message box appears, click the “Continue Anyway” button.



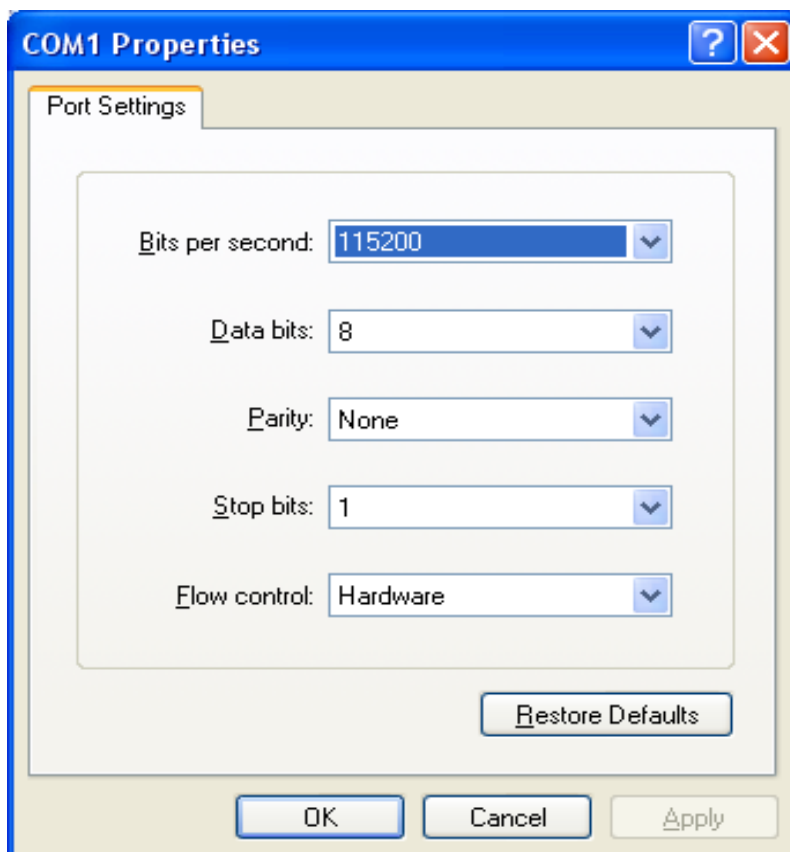
5) Clicking the "Yes" button will reboot the PC.



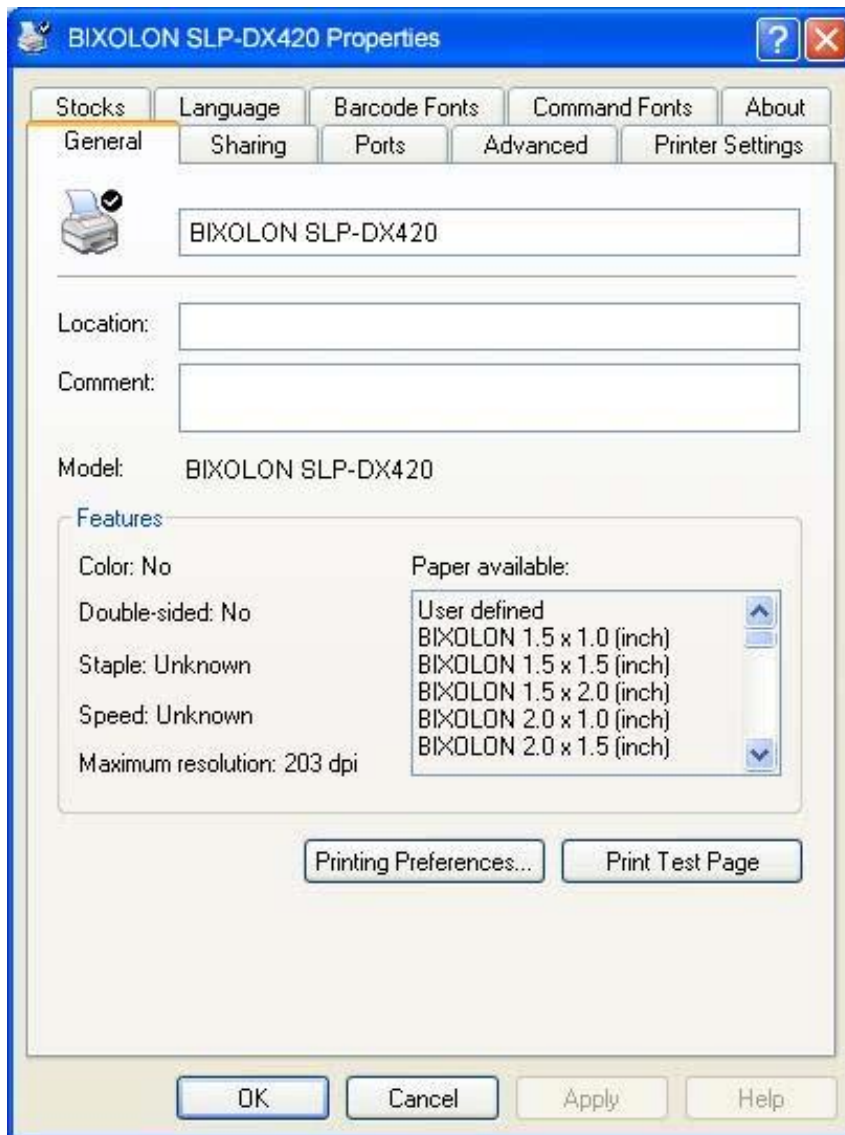
6) Open the printer properties window in the Windows OS.

7) Click the "Port Settings" button in the "Ports" tab.

8) Match the communication settings to those of the printer.  
(The communication settings of the printer can be performed by conducting a self-test.)



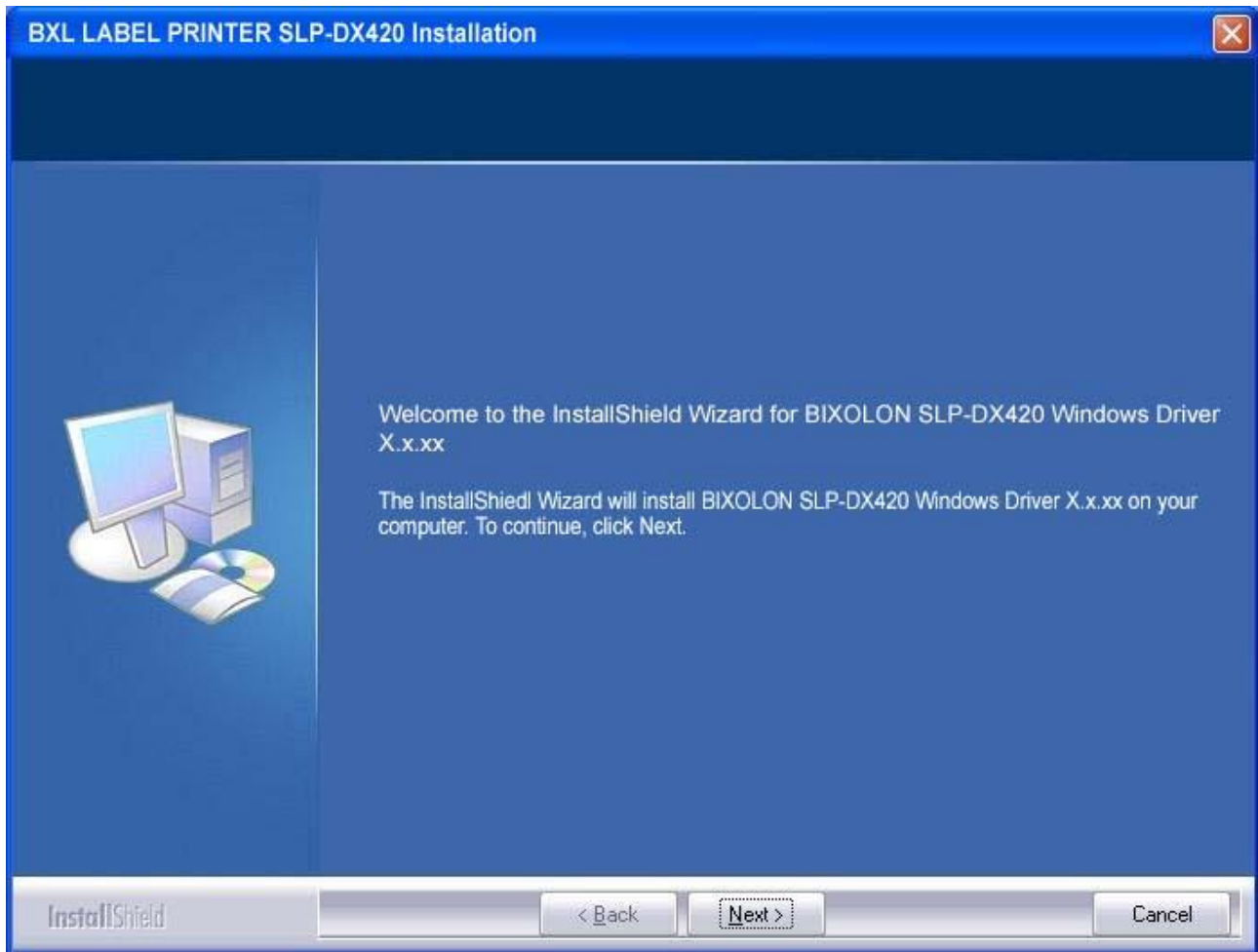
9) Click the “Print Test Page” button and check printing status.



10) Proper installation of the driver is indicated if the test page is printed normally.

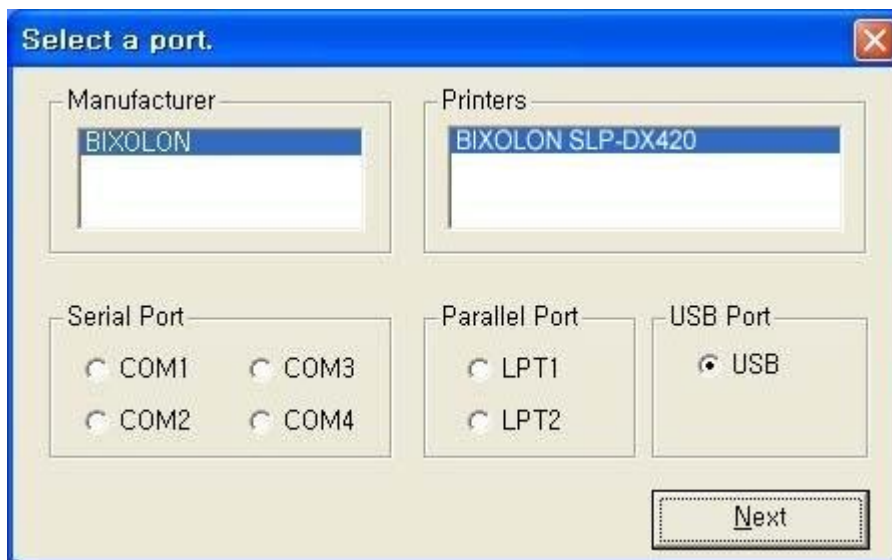
4-1-2 Via USB

- 1) Double-click the Windows Driver installation file.
- 2) Click the “Next” button.





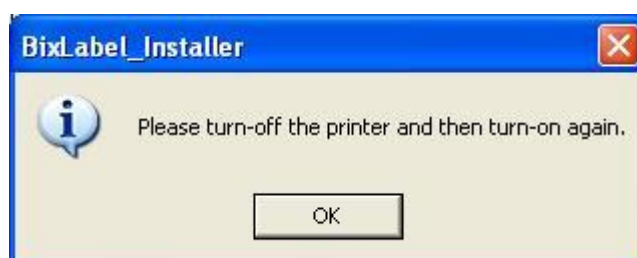
3) Select USB and click the "Next" button.



4) When the following message box appears, click the "Continue Anyway" button.



5) Click the "OK" button.



6) Turn on the printer.

7) When the New Hardware Wizard appears for the installation of the Windows Driver, select the option as shown below and click the “Next” button.



8) Click the “Next” button.



9) Click the “Next” button.



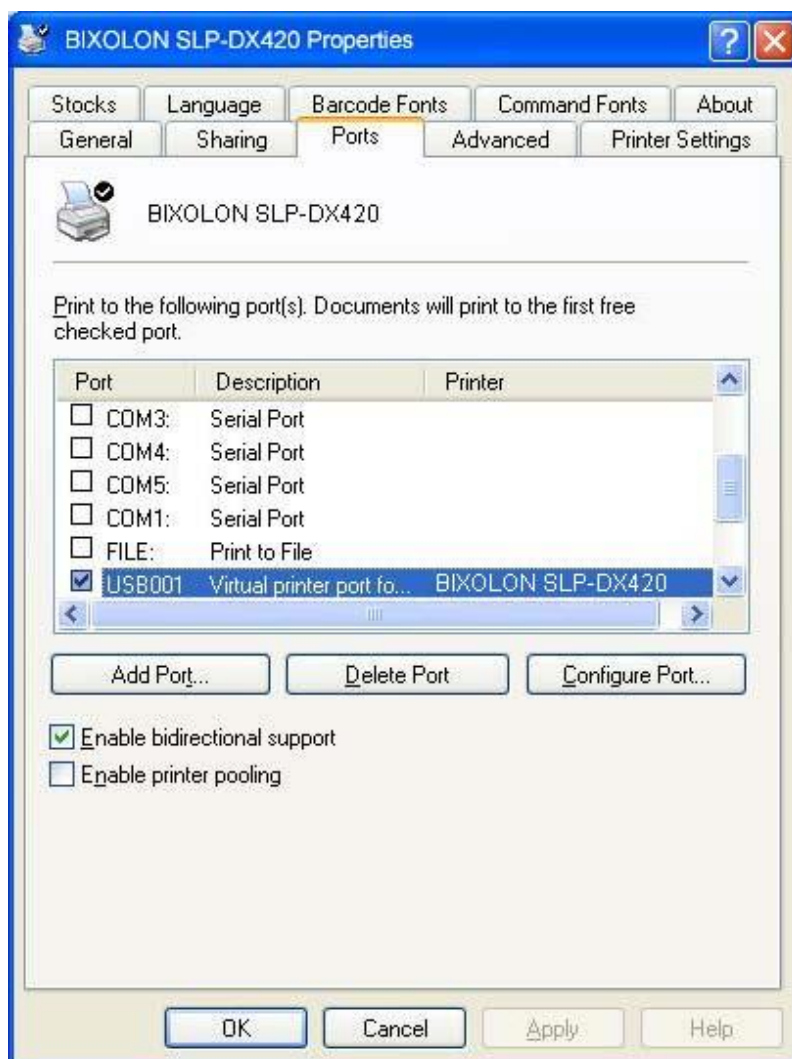
10) Click the “Continue Anyway” button.



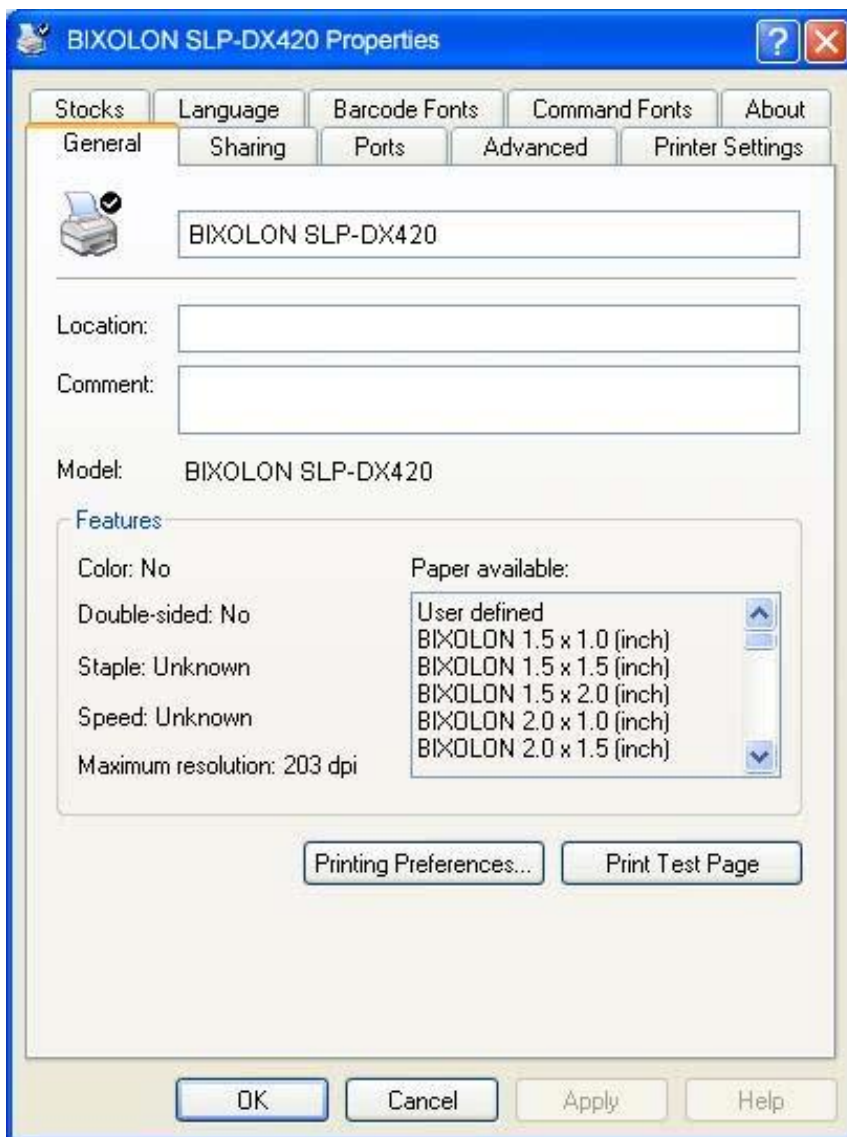
11) Click the “Finish” button.



12) The USB Port setting can be confirmed in the Windows Driver properties.



13) Click the “Print Test Page” button and check printing status.

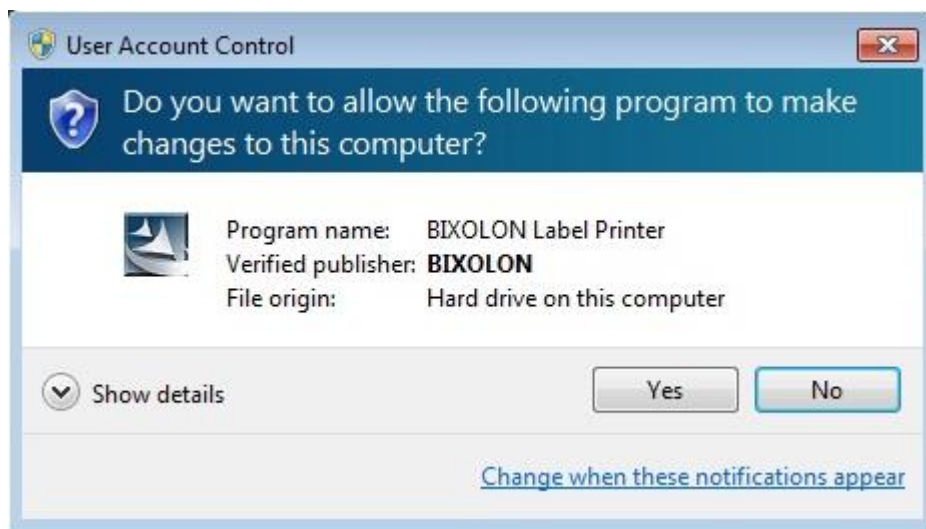


14) Proper installation of the driver is indicated if the test page is printed normally.

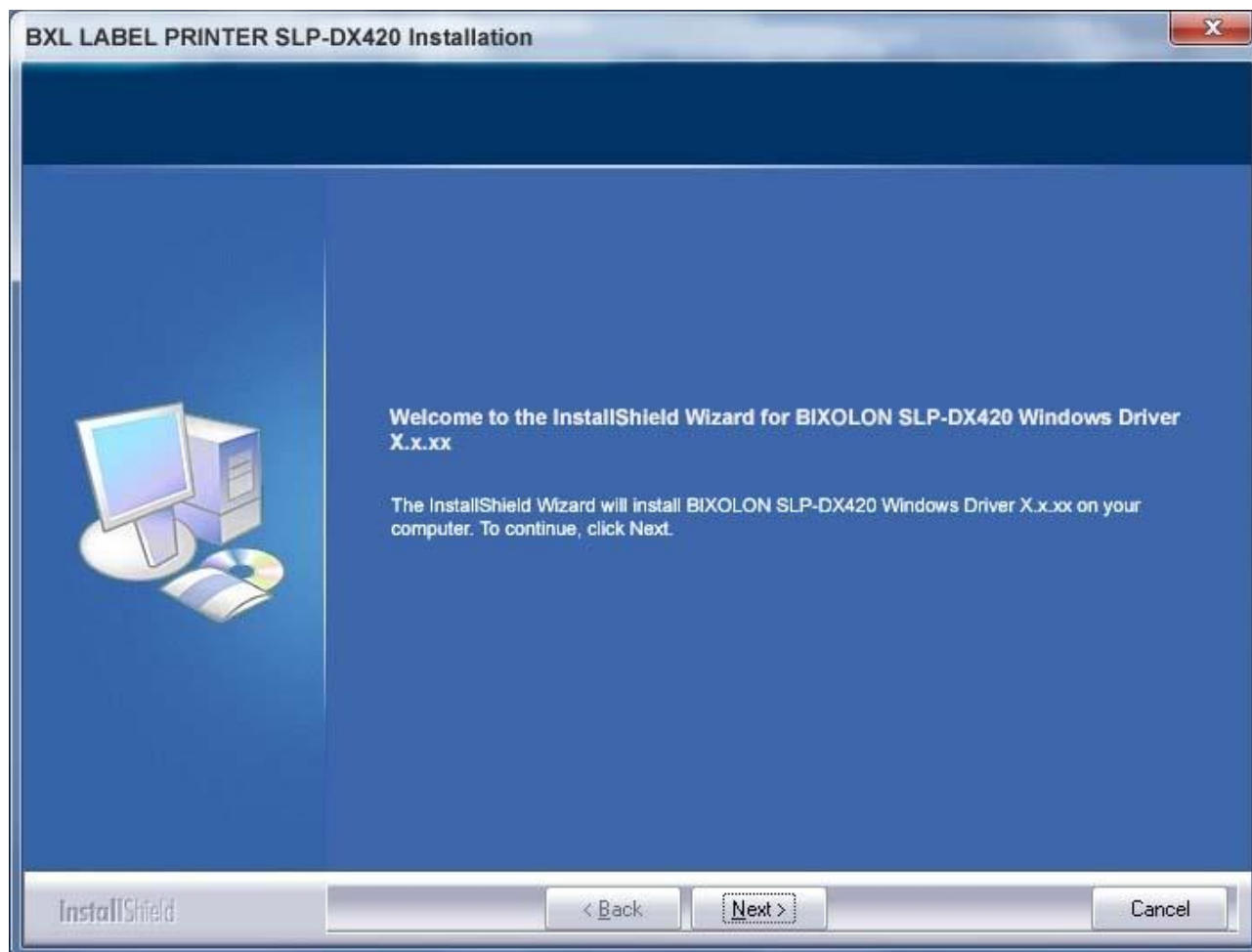
**4-2 Installing Windows VISTA/2008 Server/7/8**

4-2-1 Via Serial or Parallel

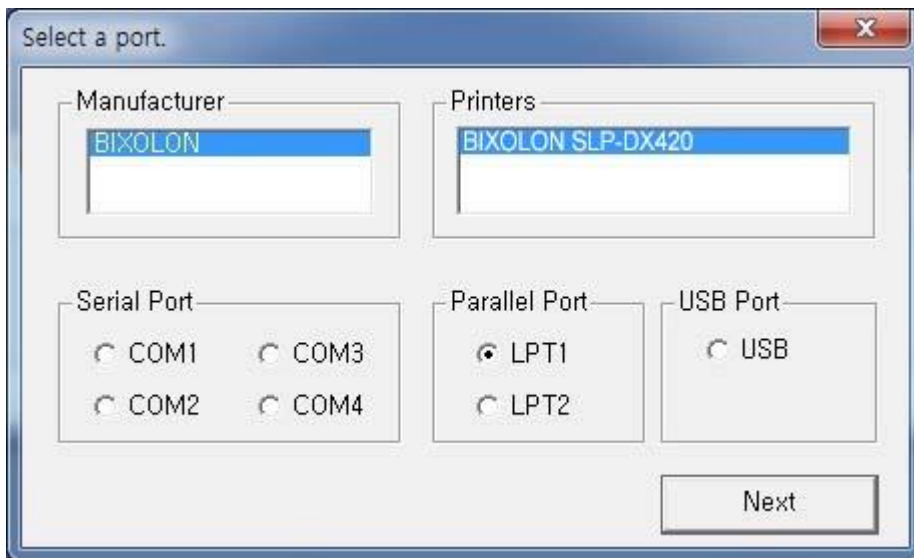
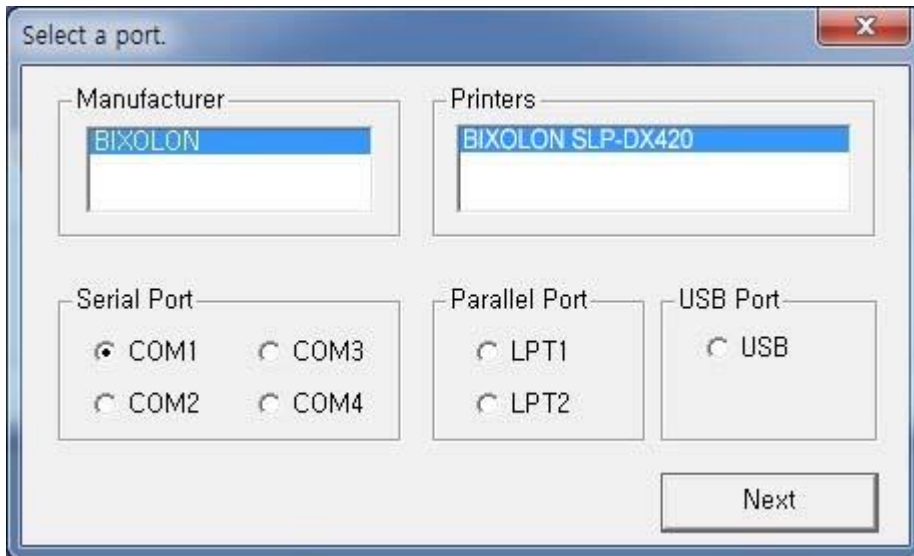
- 1) Double-click the Windows Driver installation file.
- 2) Click the “Yes” button.



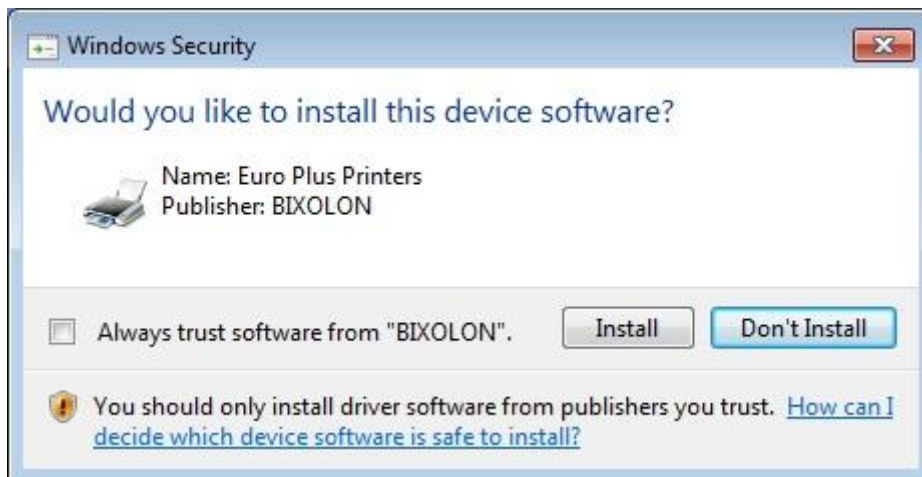
- 3) Click the “Next” button.



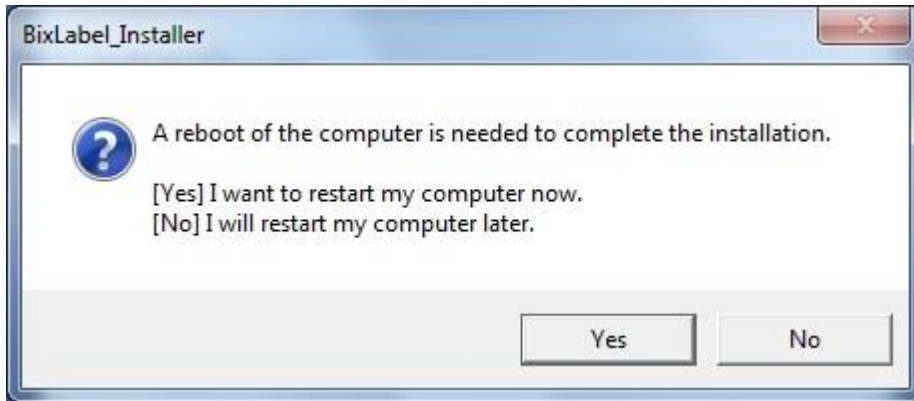
4) Select the COM or LPT (Which one you want to use) port to be used and click the “Next” button.



5) When the following message box appears, click the “Install” button.



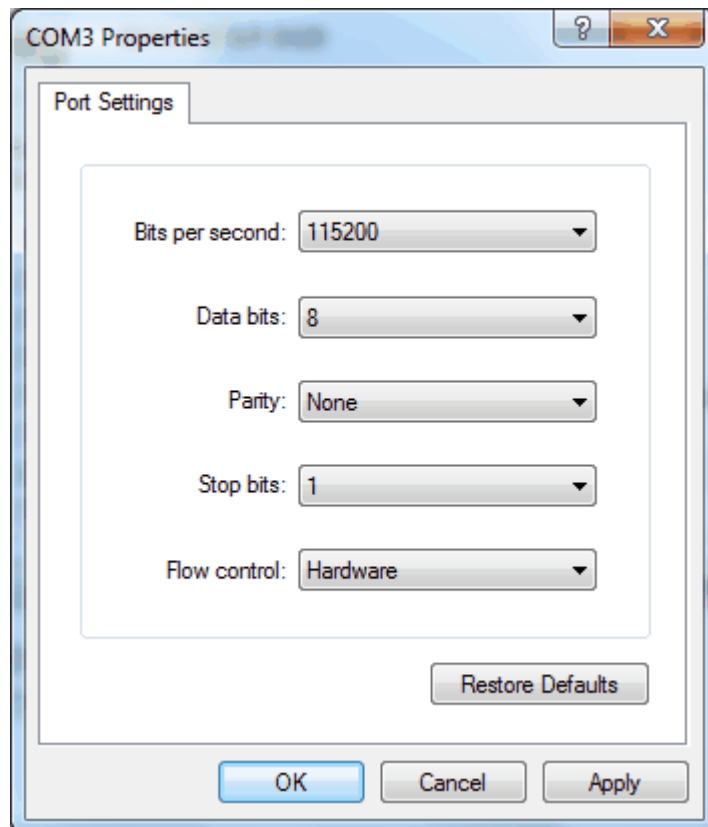
6) Clicking the "Yes" button will reboot the PC.



7) Open the printer properties window in the Windows OS.

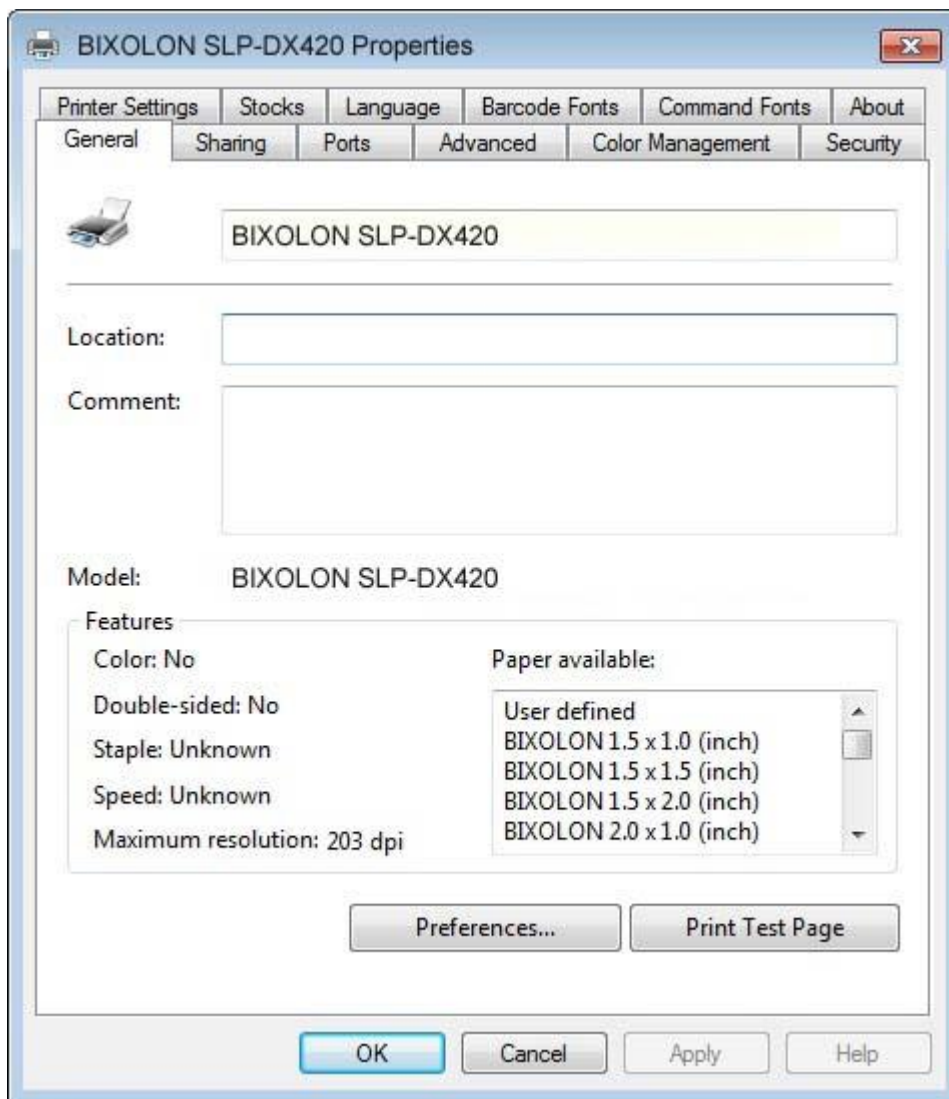
8) Click the "Port Settings" button in the "Ports" tab.

9) Match the communication settings to those of the printer.  
(The communication settings of the printer can be performed by conducting a self-test.)





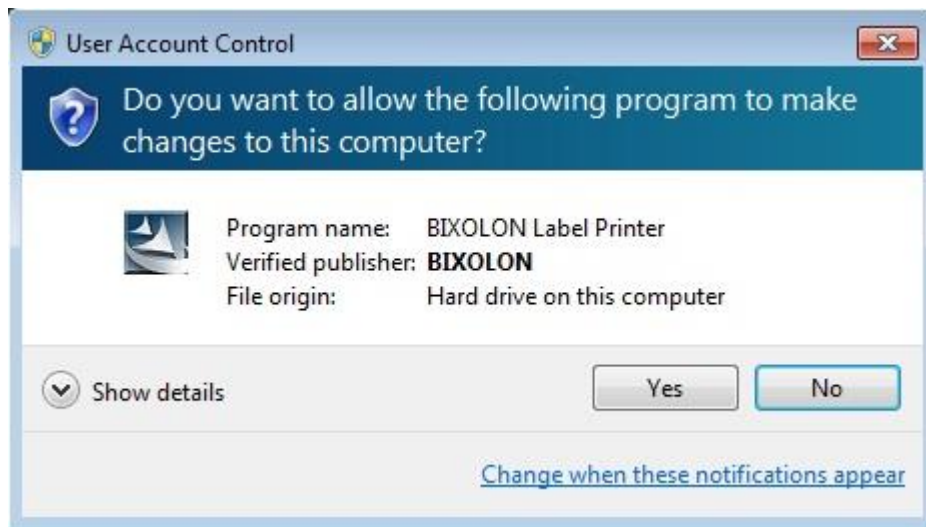
10) Click the “Print Test Page” button and check printing status.



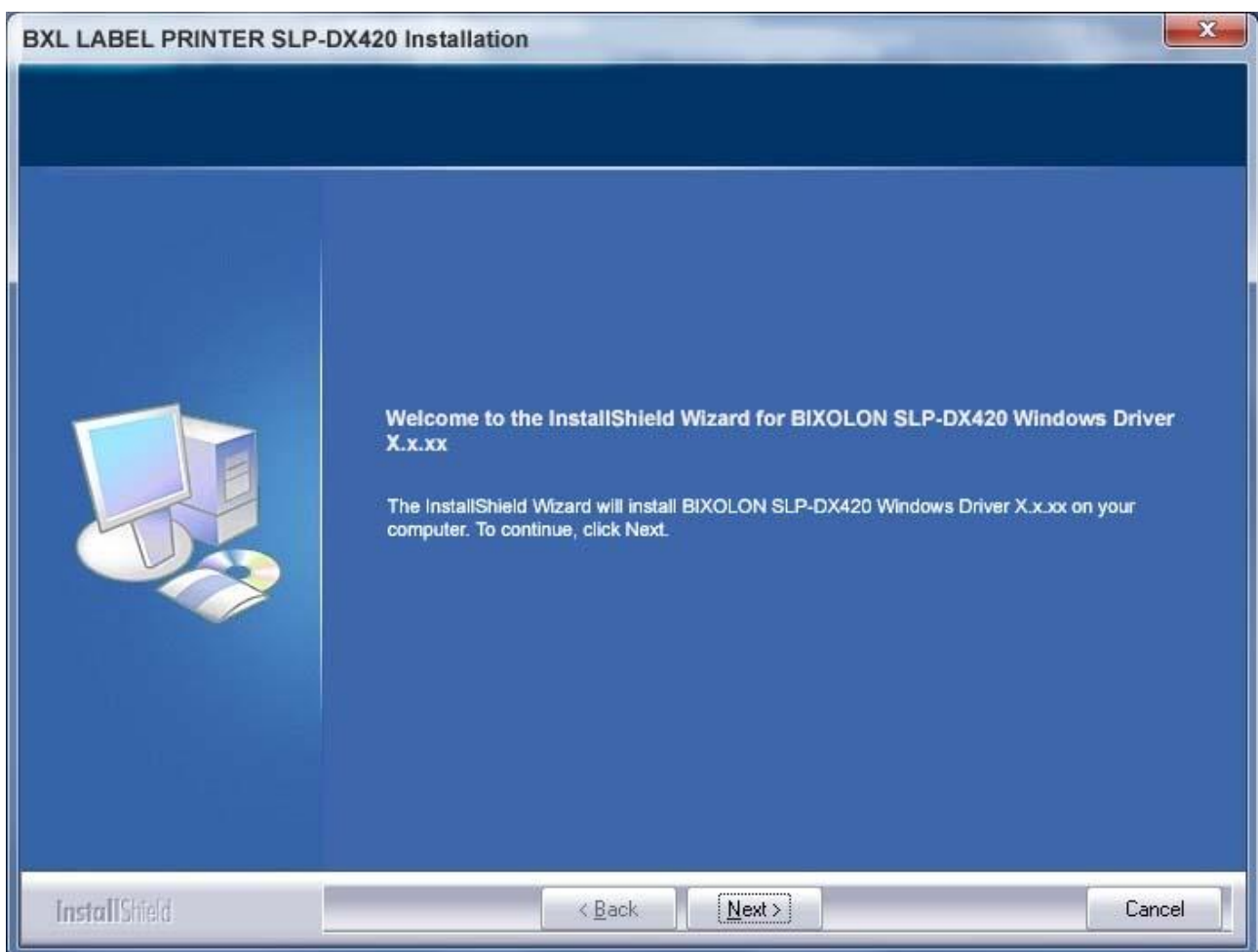
11) Proper installation of the driver is indicated if the test page is printed normally.

## 4-2-2 Via USB

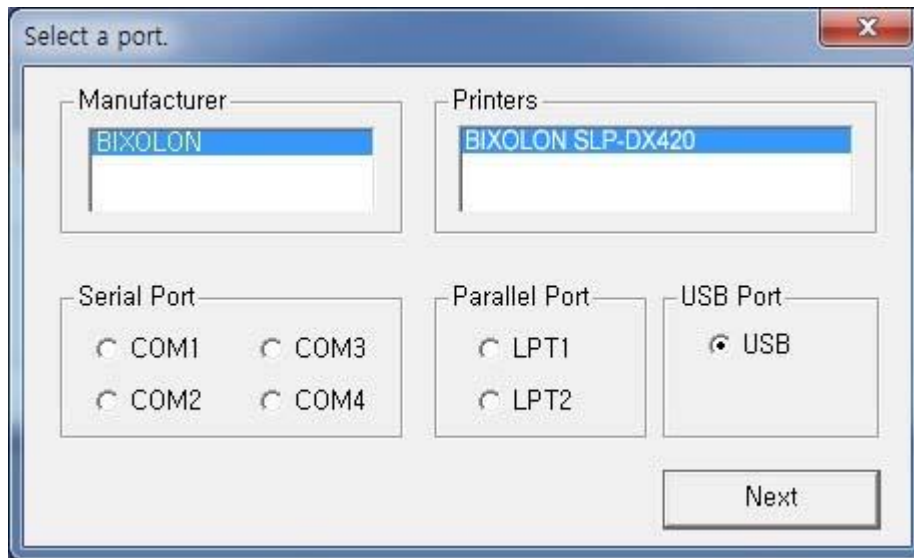
- 1) Double-click the Windows Driver installation file.
- 2) Click the “Yes” button



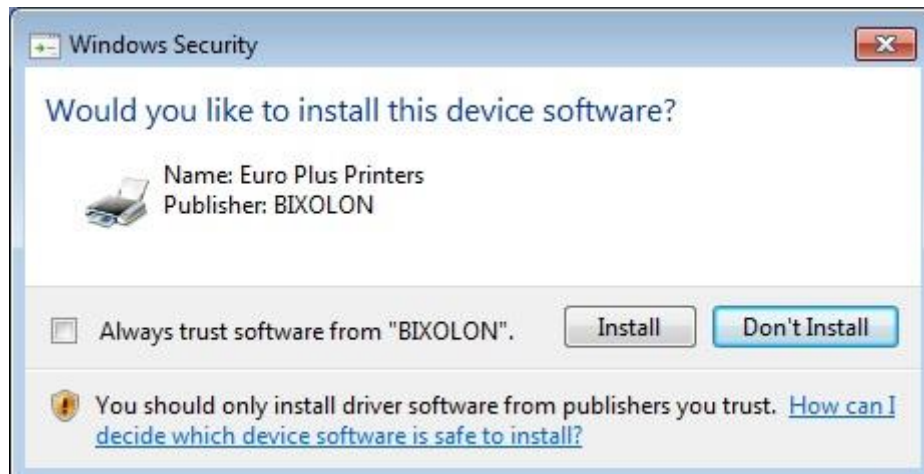
- 3) Click the “Next” button.



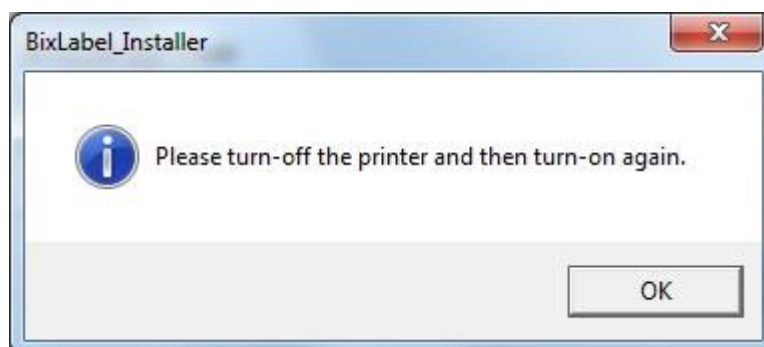
4) Select USB and click the "Next" button.



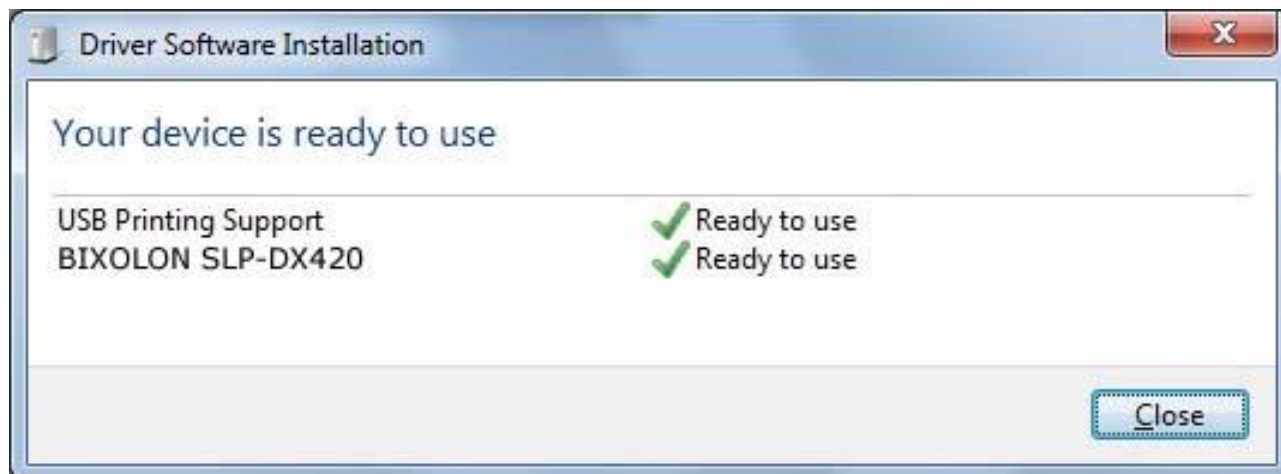
5) When the following message box appears, click the "Install" button.



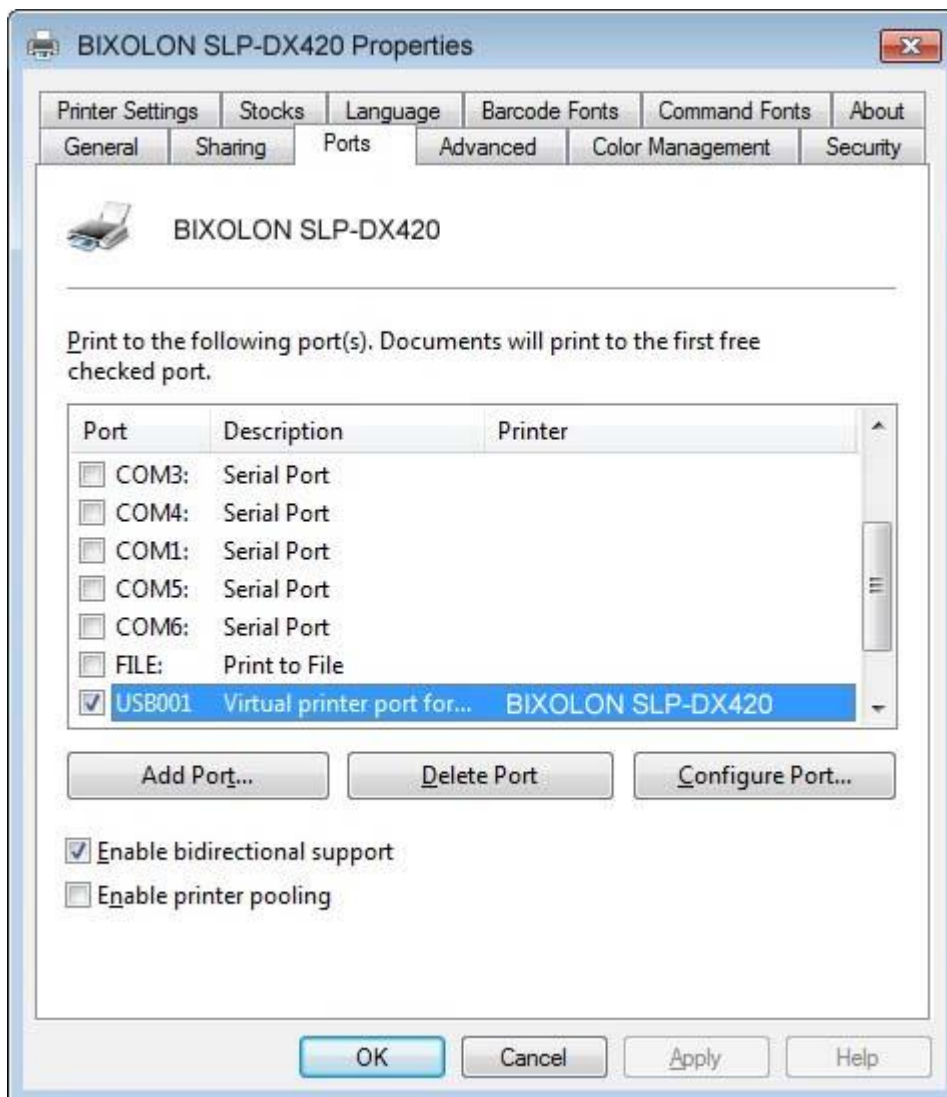
6) Click the "OK" button.



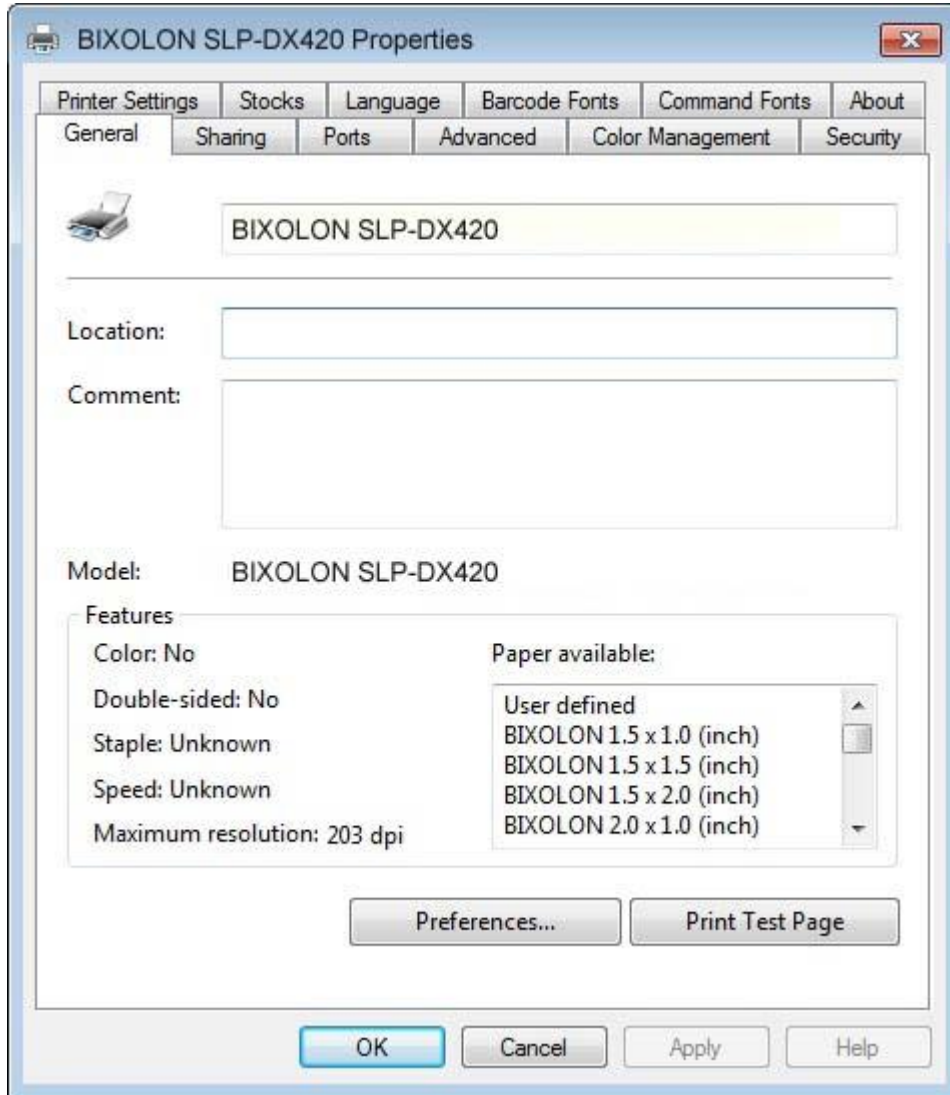
7) Turn on the printer.



8) The USB Port setting can be confirmed in the Windows Driver properties.



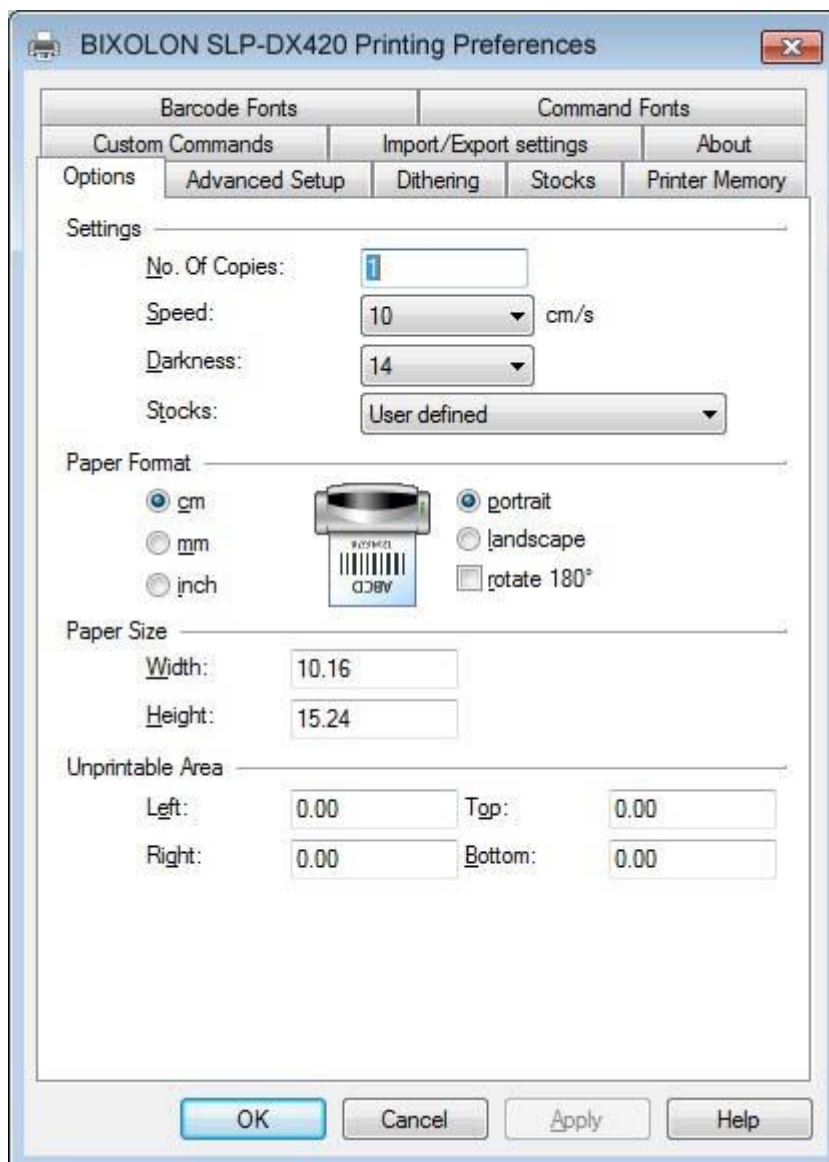
9) Click the “Print Test Page” button and check printing status.



10) Proper installation of the driver is indicated if the test page is printed normally.

## 5. Detailed Windows Driver Settings

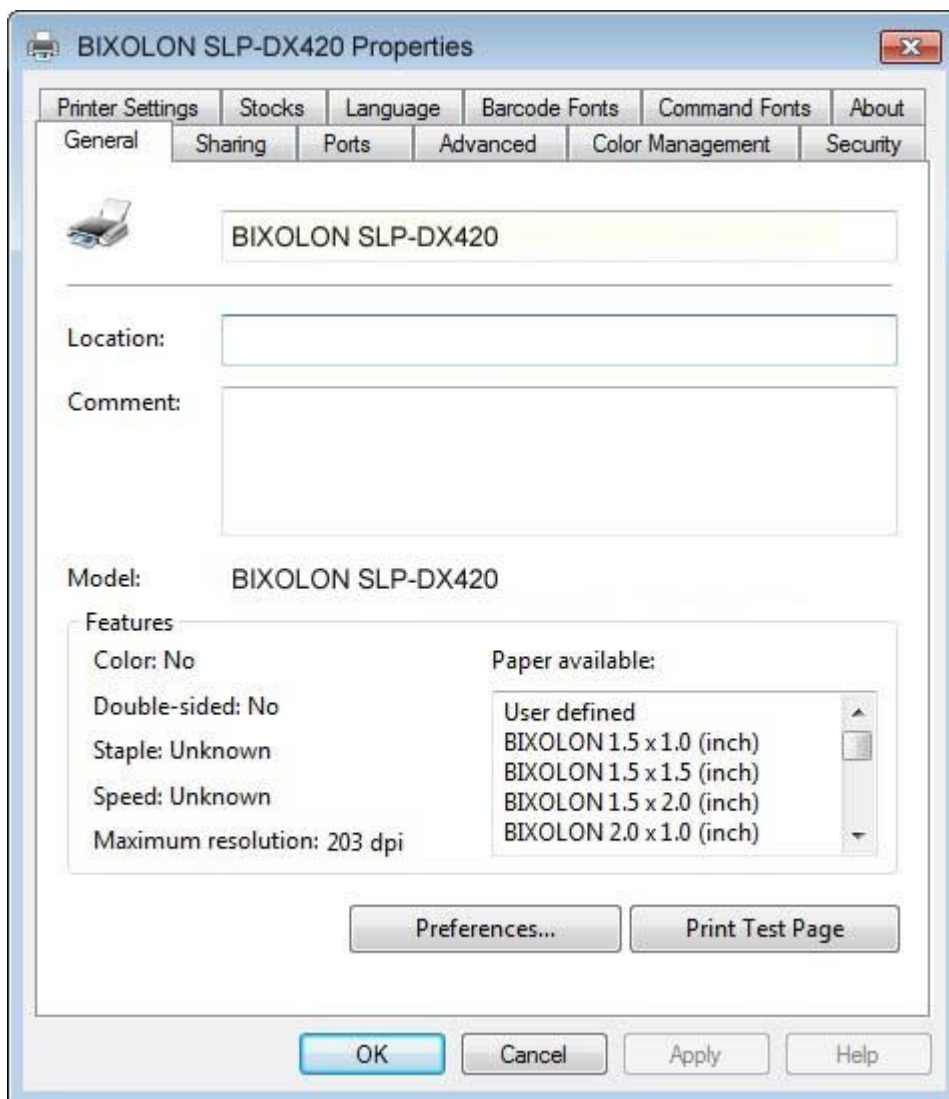
### 5-1 Printing Preferences



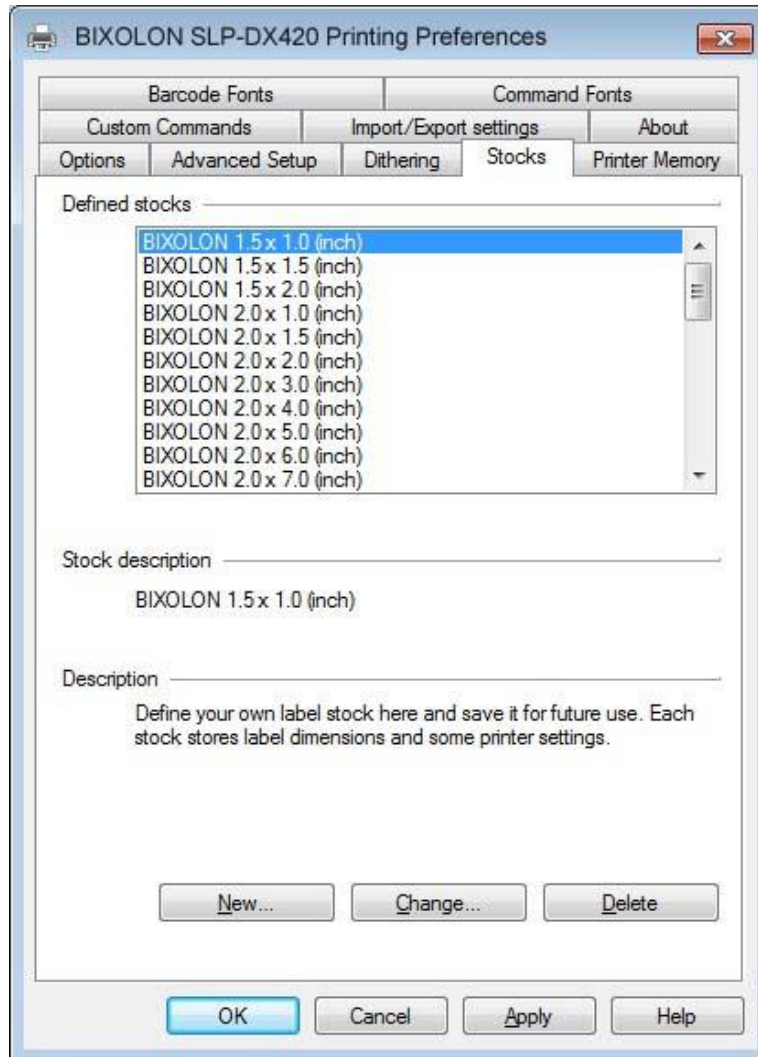
- 1) No.Of Copies: The number of copies..
- 2) Speed: Set the printing speed (1 ~ 7 ips)
- 3) Darkness: The darkness level of printouts (0 ~ 20).
- 4) Portrait: The printer prints in portrait orientation.
- 5) Landscape: The printer prints in landscape orientation.
- 6) Rotate 180: The option of rotation 180 degree
- 7) Width: Set the width of the paper.
- 8) Height: Set the height of the paper.
- 9) Unprintable Area: Set the unprintable area.

**5-2 Adding new paper size**

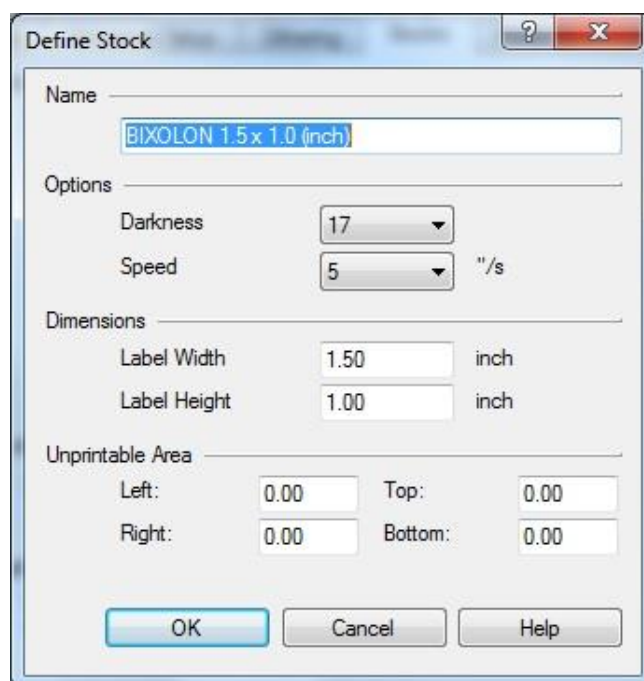
1) Click the “Preferences…” button



2) Click the “New (N)” button.



3) Set a value you want and then click “OK” button.





## **6. Specifications**

### **6-1 Resolution**

BIXOLON SLP-DX420 : 203 × 203 dpi

BIXOLON SLP-DX423 : 300 × 300 dpi

### **6-2 Paper Size**

1.5 x 1.0 inch (38.1 x 25.4 cm)

1.5 x 1.5 inch (38.1 x 38.1 cm)

1.5 x 2.0 inch (38.1 x 50.8 cm)

2.0 x 1.0 inch (50.8 x 25.4 cm)

2.0 x 1.5 inch (50.8 x 38.1 cm)

2.0 x 2.0 inch (50.8 x 50.8 cm)

3.0 x 1.0 inch (76.2 x 25.4 cm)

3.0 x 1.5 inch (76.2 x 38.1 cm)

3.0 x 2.0 inch (76.2 x 50.8 cm)

3.5 x 1.0 inch (98.9 x 25.4 cm)

3.5 x 1.5 inch (98.9 x 38.1 cm)

3.5 x 2.0 inch (98.9 x 50.8 cm)

3.5 x 3.0 inch (98.9 x 76.2 cm)

3.5 x 4.0 inch (98.9 x 101.6 cm)

3.5 x 6.0 inch (98.9 x 152.8 cm)

4.0 x 1.0 inch (98.9 x 25.4 cm)

4.0 x 1.5 inch (98.9 x 38.1 cm)

4.0 x 2.0 inch (98.9 x 50.8 cm)

4.0 x 3.0 inch (98.9 x 76.2 cm)

4.0 x 4.0 inch (98.9 x 101.6 cm)

4.0 x 6.0 inch (98.9 x 152.8 cm)

4.0 x 8.0 inch (98.9 x 203.2 cm)

4.0 x 12.0 inch (98.9 x 305.6 cm)