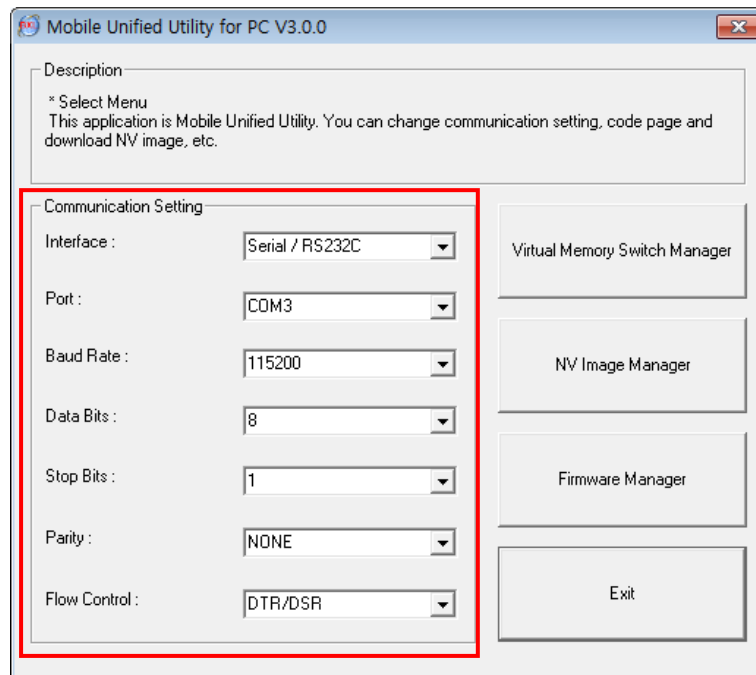


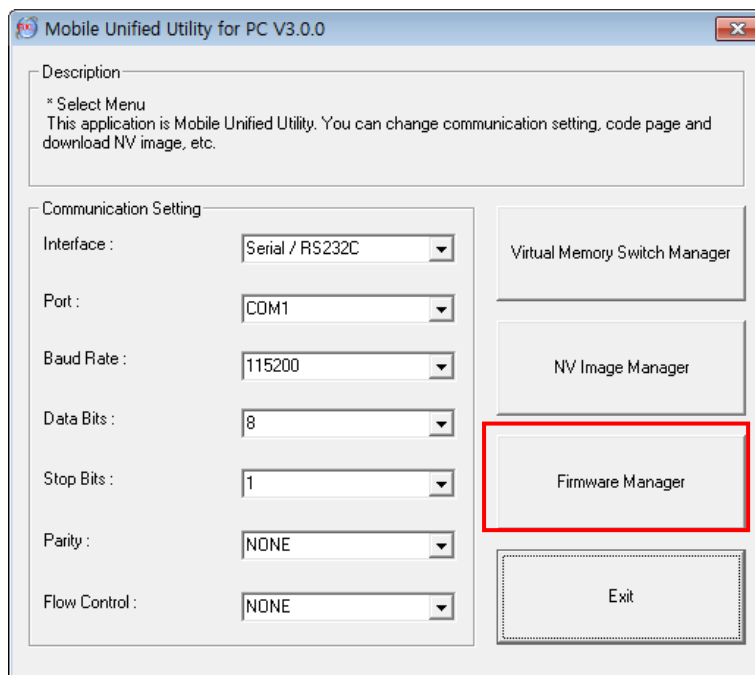
Firmware Download

*** Download F/W first, then download font file**

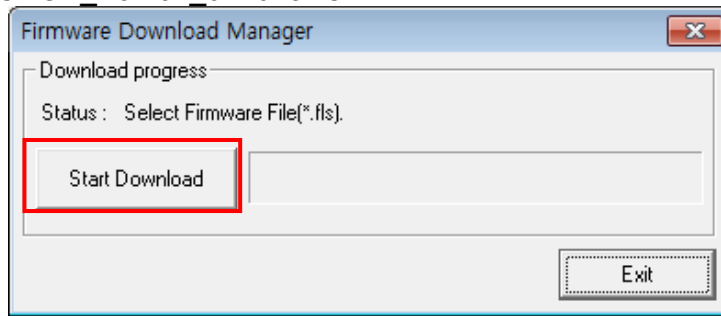
1. Run Unified Utility
2. Connection setting.



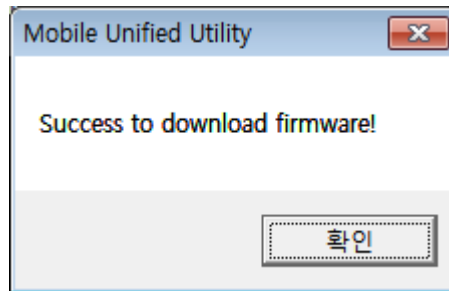
3. Select Firmware Manager



4. Click 'Start Download' then select firmware file(*.fls).
e.g.) SPP-R200II_CHOBI_V01.04_041613.flis



5. The following message is shown when F/W download is completed.



- Caution: Do not power off the printer while F/W is downloaded then LED is blinking.
Reset the printer after download is completed.