

**BIXOLON®**

**User Manual**

**Net Configuration Tool**

**Mobile Printer**

**Rev. 1.01**

<http://www.bixolon.com>

## ■ Table of Contents

<b>1. Manual Information</b> .....	<b>3</b>
<b>2. Operating System (OS) Environment</b> .....	<b>3</b>
<b>3. Software Installation &amp; Uninstallation</b> .....	<b>4</b>
3-1 Installation .....	4
3-2 Uninstallation .....	6
<b>4. Configuration</b> .....	<b>8</b>
4-1 Serial / USB Configuration .....	8
4-2 WLAN Configuration .....	13
4-3 Web browser.....	17

## 1. Manual Information

This Net Configuration Tool Manual provides information on the utility program used to set printer operation conditions.

## 2. Operating System (OS) Environment

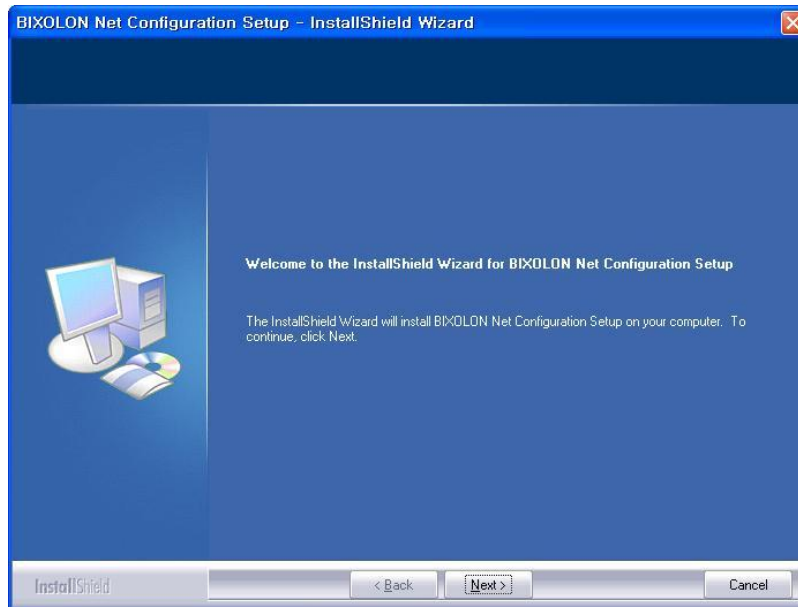
The following operating systems are supported for usage.

- Microsoft Windows XP (32bit/64bit)
- Microsoft Windows 2003 Server (32bit/64bit)
- Microsoft Windows Embedded For Point Of Service
- Microsoft Windows VISTA (32bit/64bit)
- Microsoft Windows 2008 Server (32bit/64bit)
- Microsoft Windows 7 (32bit/64bit)
- Microsoft Windows 8 (32bit/64bit)

## 3. Software Installation & Uninstallation

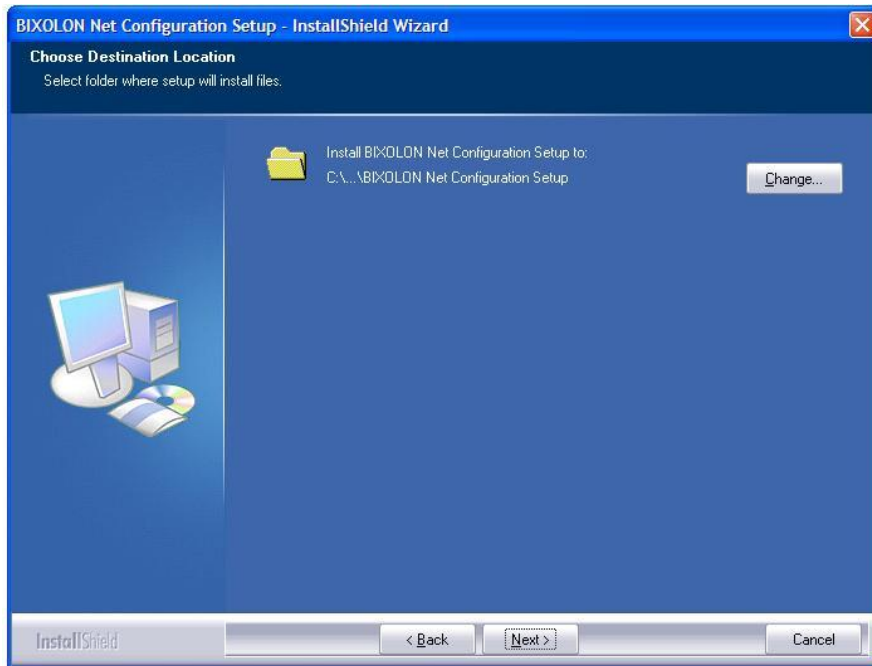
### 3-1 Installation

- 1) Execute the “Net Configuration Setup\_V2.x.x.exe” file.  
(This file must first be downloaded.)
- 2) Click the “Next” button.

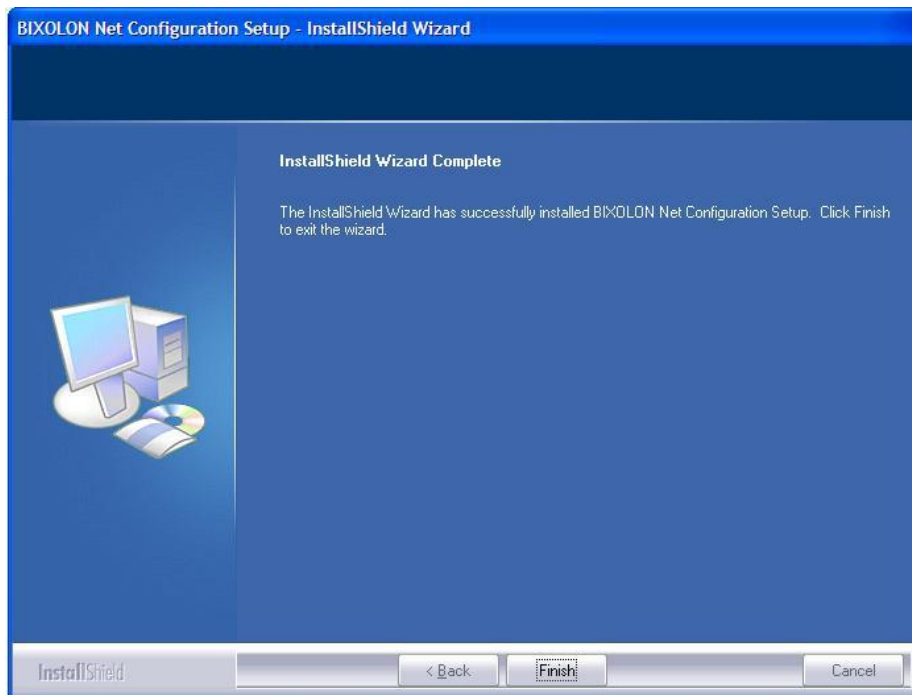


# Net Configuration Tool

- 3) Click the “Next” button.  
(Install to: C:\Program Files\BIXOLON\BIXOLON Net Configuration Setup)



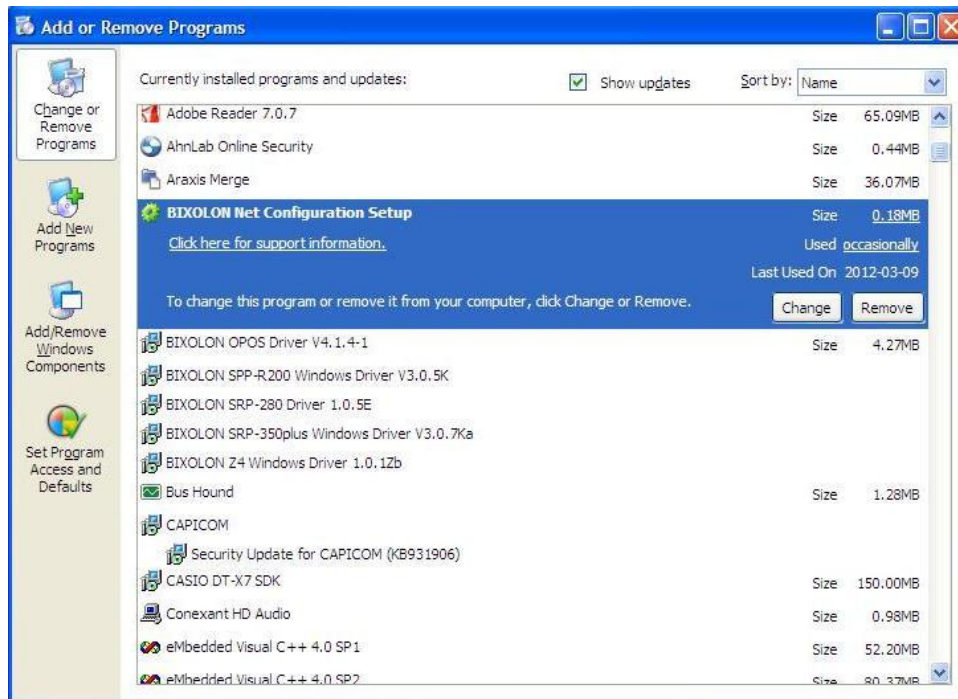
- 4) Installation will be completed on click the “Finish” button.



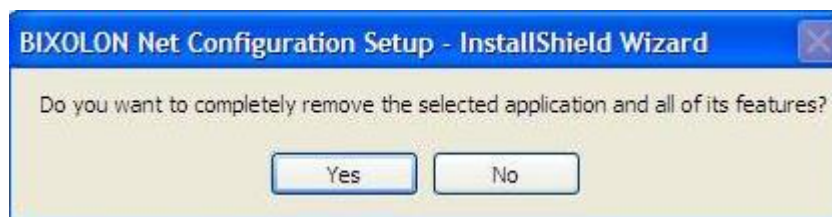
## 3-2 Uninstallation

### (1) Windows XP

- 1) Click and activate the “Add/Remove Programs” icon in the Control Panel.
- 2) Select “BIXOLON Net Configuration Setup” and click the “Change/Remove” button.



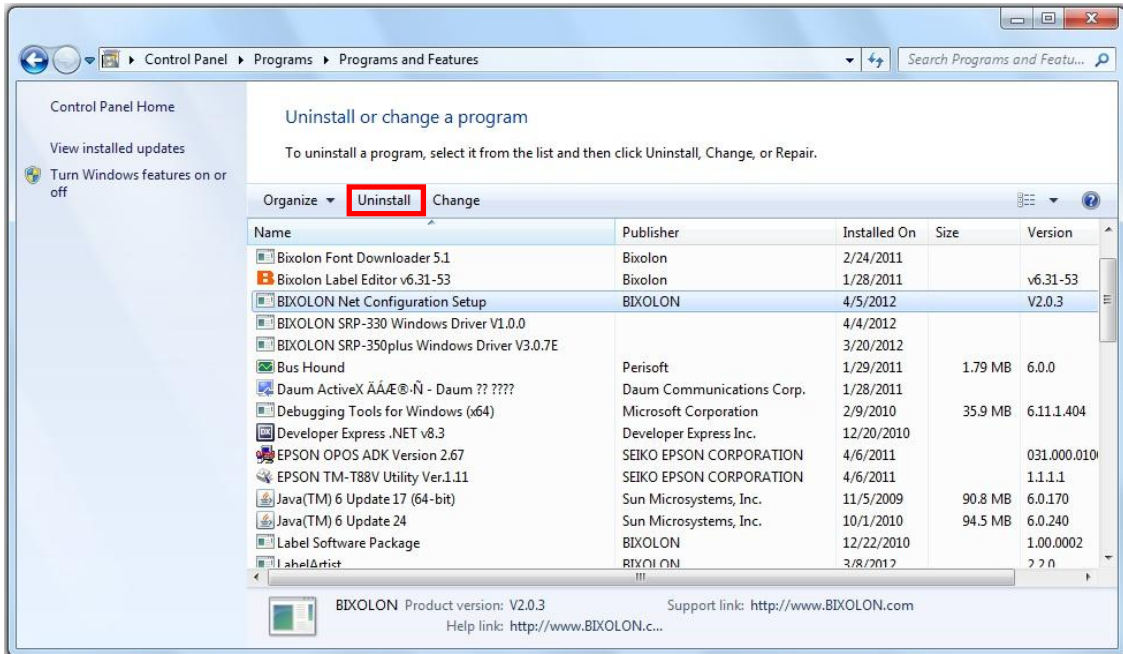
- 3) Click the “Yes” button to completely remove the application.



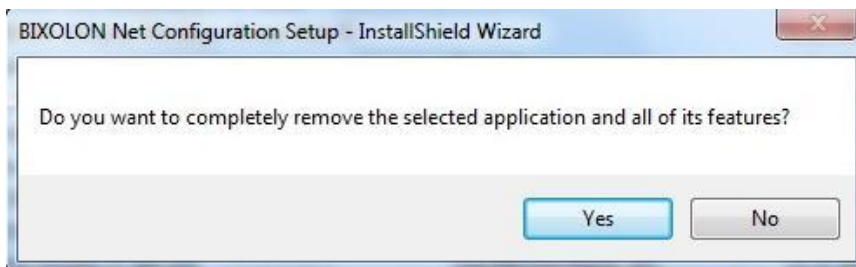
# Net Configuration Tool

## (2) Windows 7

- 1) Click and activate the “Programs and Features” icon in the Control Panel.
- 2) Select “BIXOLON Net Configuration Setup” and click the “Uninstall” button.



- 3) Click the “Yes” button to completely remove the application.

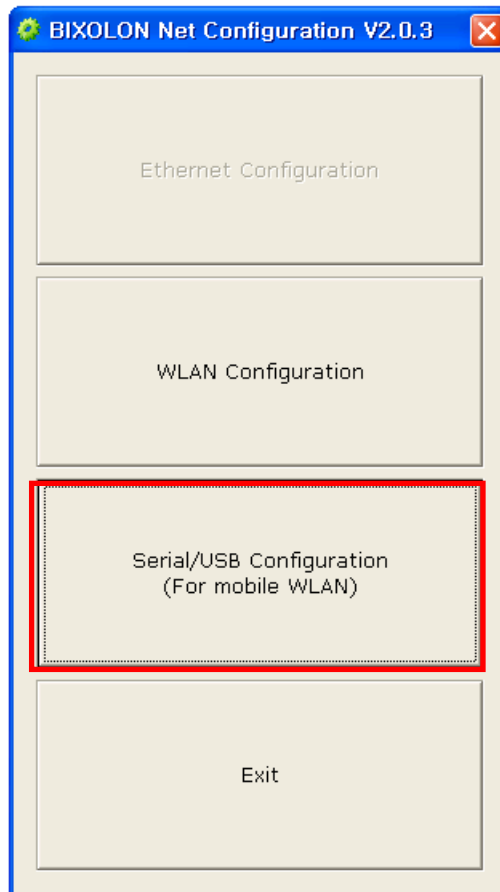


## 4. Configuration

Install and excute NetConfiguration.exe involved in CD.  
(Start>>BIXOLON>>NetConfiguration.exe)

### 4-1 Serial / USB Configuration

Connect to Serial/USB cable, then click “Serial/USB Configuration”.

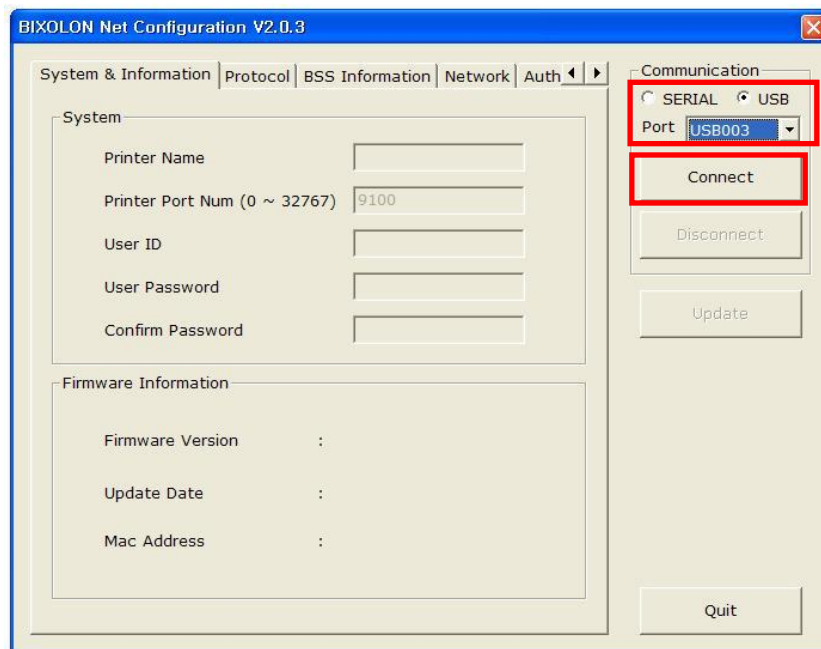




# Net Configuration Tool

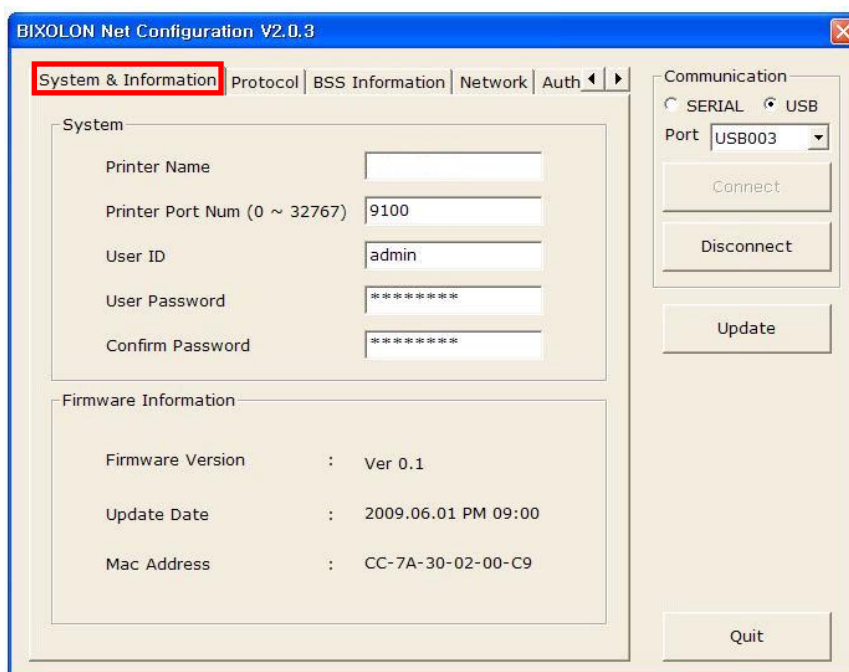
1) Choose the “Port”, then click “Connect”.

If it is properly connected, “Succeeded to printer connection” will be shown. Then the configuration of the printer will be listed.



2) System & Information

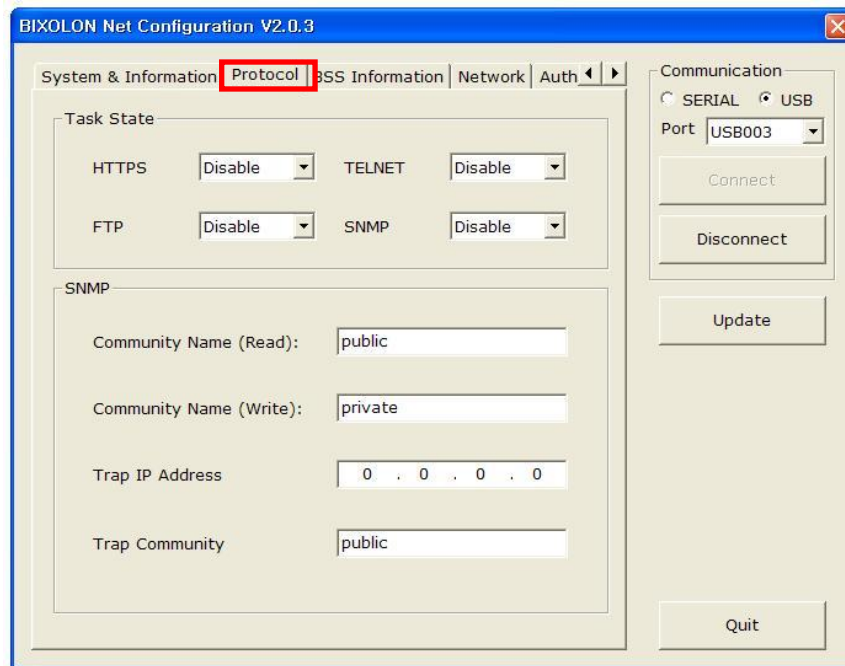
Printer Name, Printer Port, User ID, User password can be set.



# Net Configuration Tool

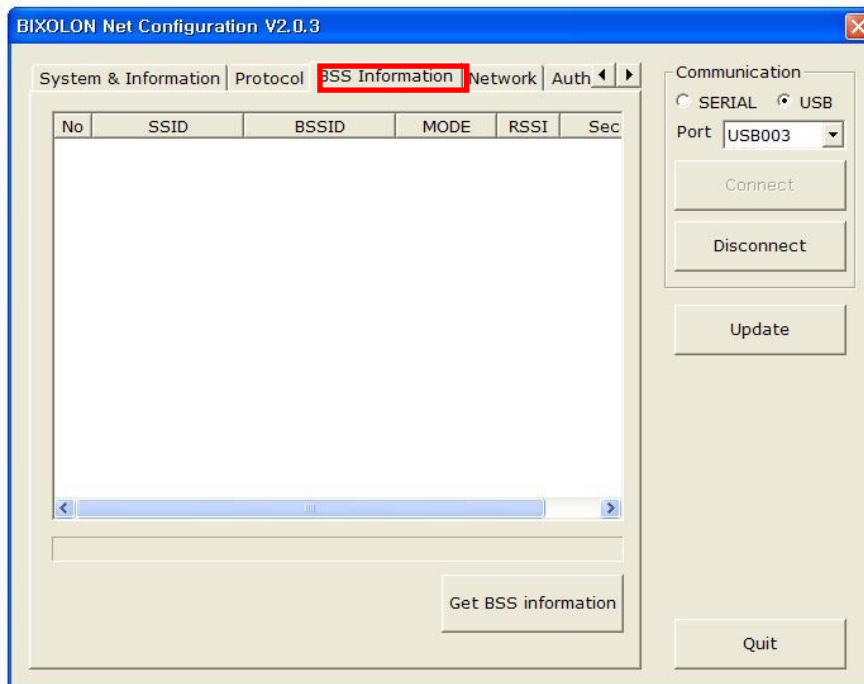
## 3) Protocol

You can set HTTPS, TELNET, FTP and SNMP protocol as able or disable.  
SNMP can be also set.



## 4) BSS Information

When you click "Get BSS information", close AP information will be listed.

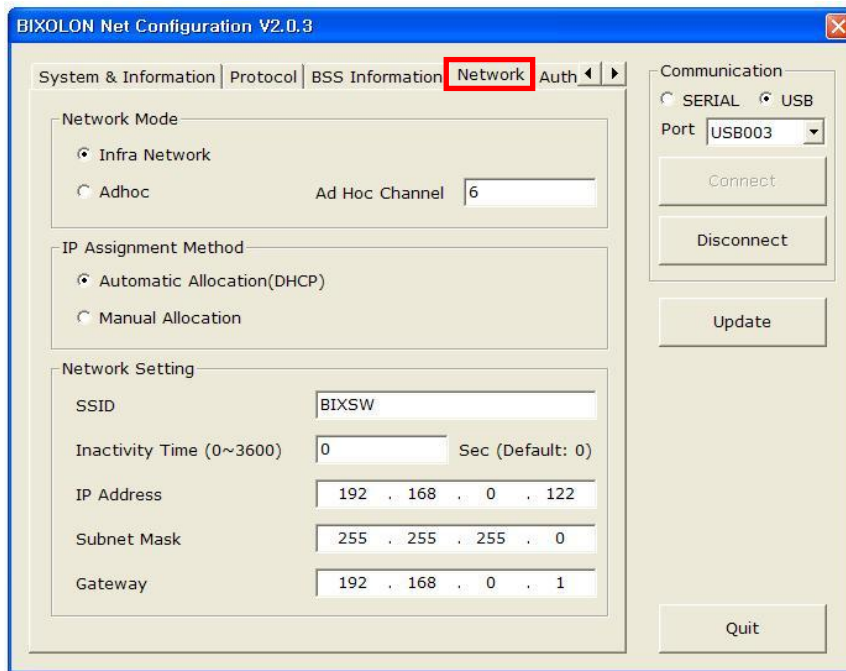


# Net Configuration Tool

## 5) Network

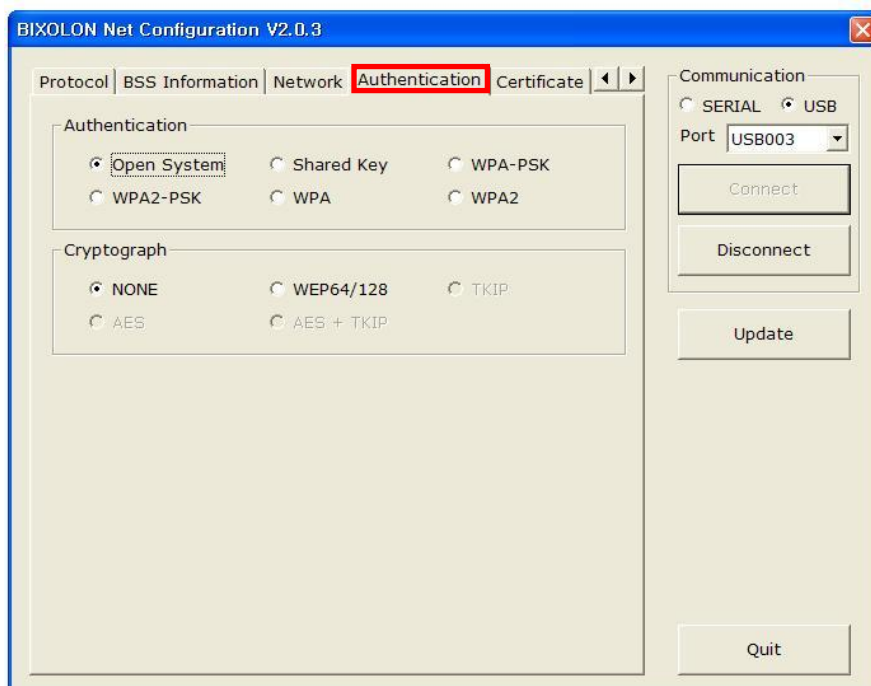
You can set Infrastructure/Adhoc, SSID, IP, Subnetmask and Gateway.

By setting “Inactivity Time”, you can disconnect the printer to host device when the data is not transferred while inactivity time. If multiple host devices are used with one printer, “Inactivity Time” is recommended. (Other host devices are restricted to use a printer if one host device keep connecting to a printer.)



## 6) Authentication

You can set Authentication and Cryptograph. If it is Infrastructure mode, you need to set Cryptograph with AP for proper connection. Then if it is Adhoc mode, you need to set Cryptograph with host device.



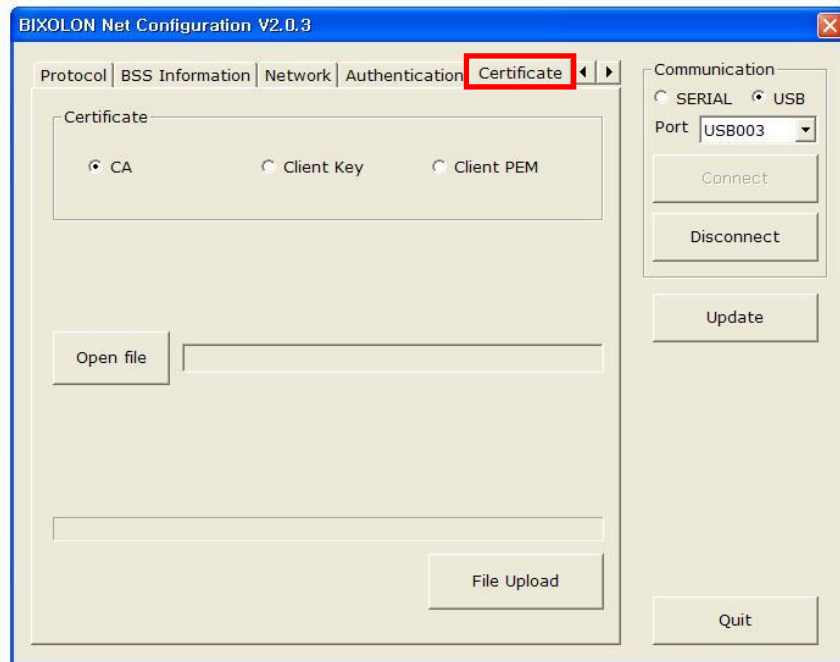
# Net Configuration Tool

## 7) Certificate

Printer can save the certificate file for EAP-TLS certification.

When you use TLS certification, CA certificate(PEM, Client Key(KEY/PEM), and client certificate(PEM) file should be uploaded. The key size of certificate recommended is 512.

If the size of certificate is more than 512, it will take some time for EAP certification.



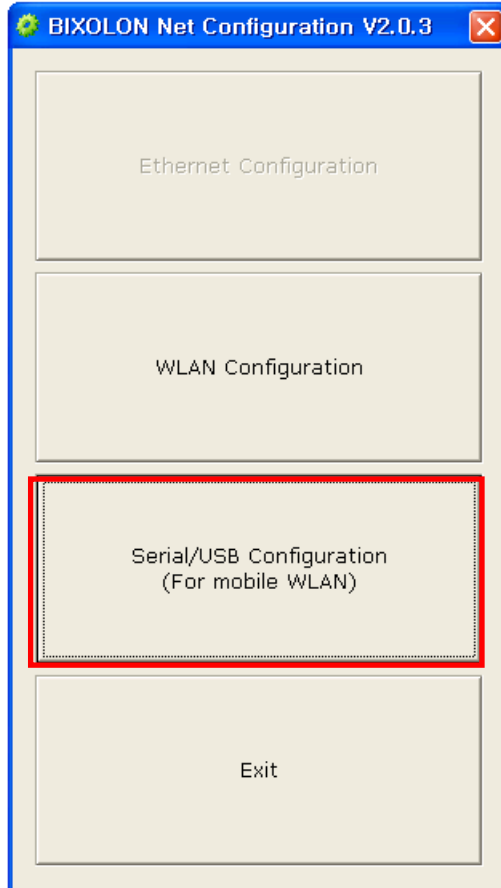
# Net Configuration Tool

## 4-2 WLAN Configuration

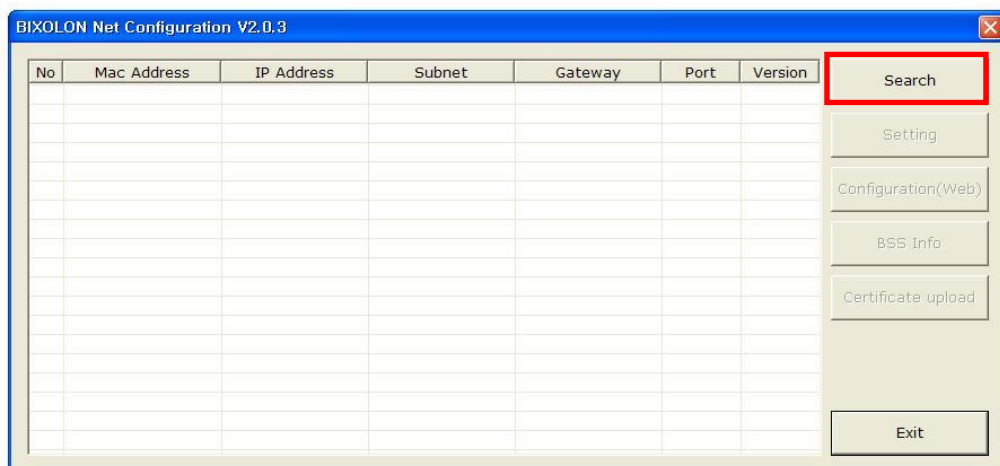
To set the WLAN, PC and Printer should be in a same network.

(AP, PC, Printer network mode, SSID, encryption, authentication has to be set the same way)

Connect to WLAN cable, then click “WLAN Configuration”.

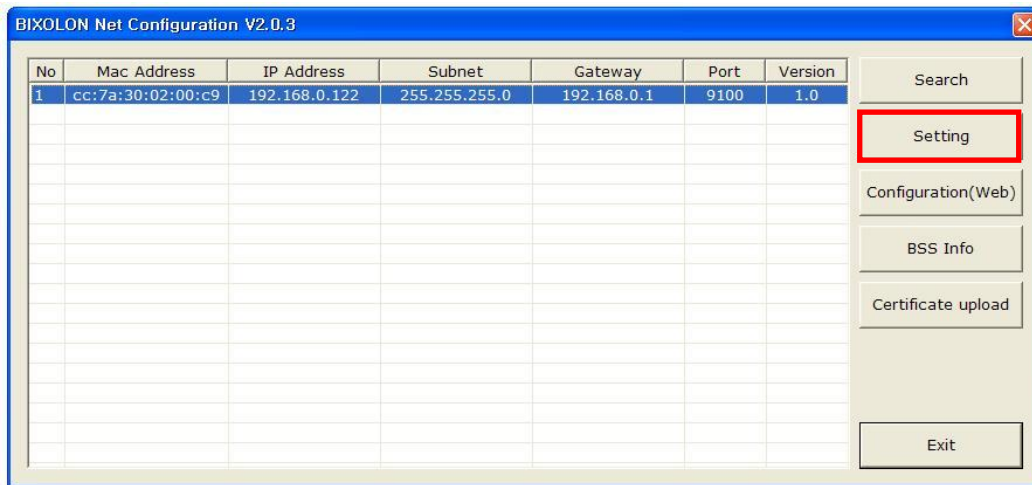


1) When you press the Search button, the printer connected to the network will be shown in the list.

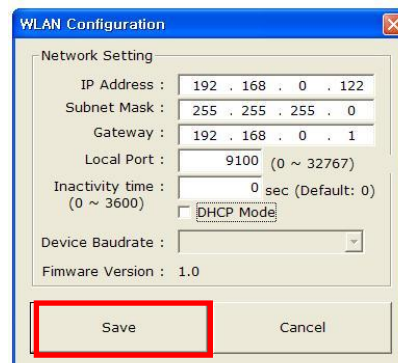


## Net Configuration Tool

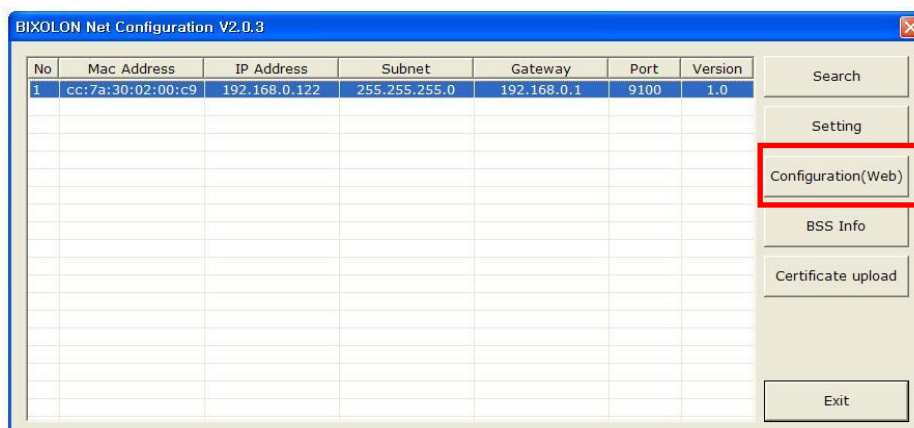
- 2) Select the printer from the list and press the [Setting] button, and then the following window for changing the WLAN settings will pop up.



- 3) Enter the proper IP Address, Subnet Mask, and Gateway of the currently used network, and then click the [Save] button to save the settings.  
(Device Baudrate setting, which is used for other models, is not necessary for our printer.)

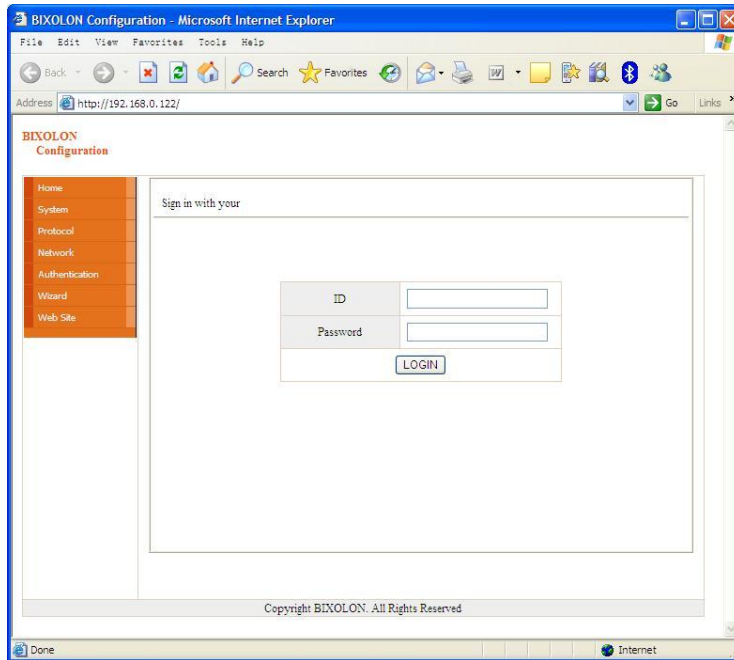


- 4) Select the printer from the list and press the [Configuration(web)] button, and then the Login window will pop up.

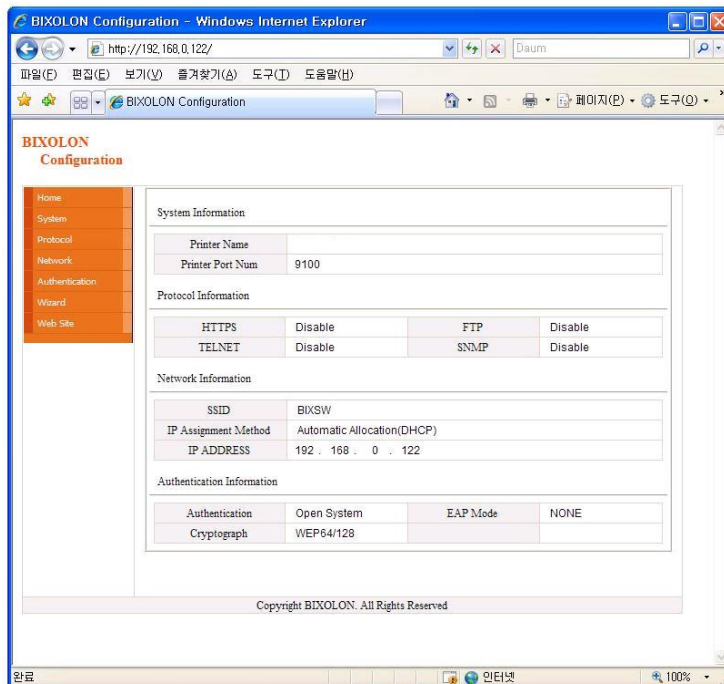


# Net Configuration Tool

- 5) Enter the ID and Password set in the printer, and click OK.  
(Default settings are ID: "admin", Password: "password")

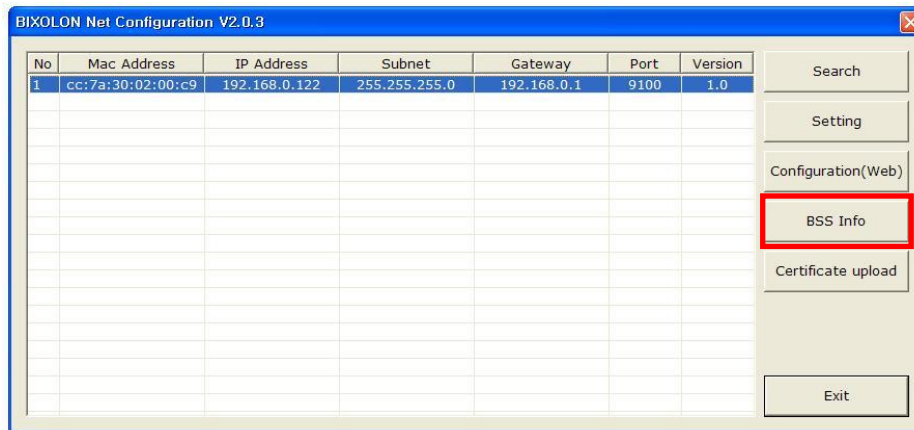


- 6) When you log in, you will see the web browser for changing the WLAN settings as shown below.

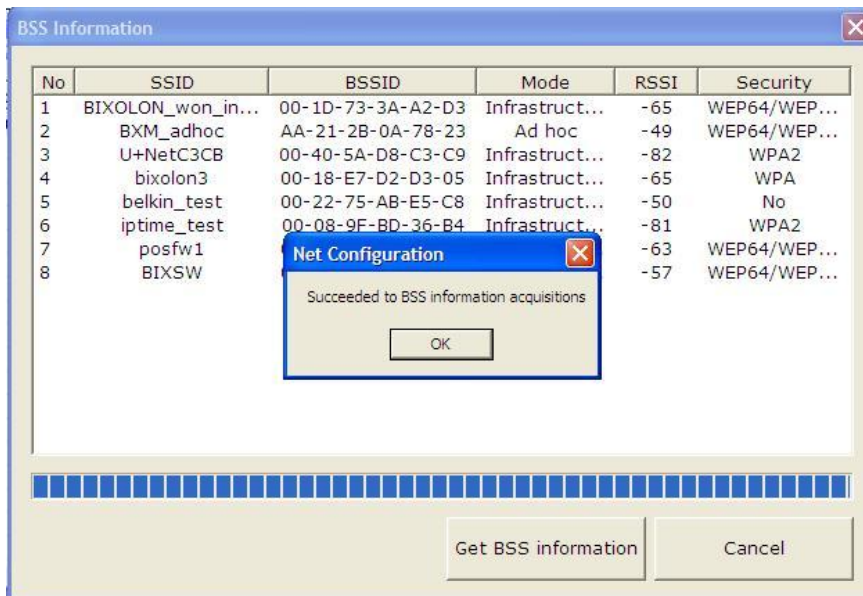


# Net Configuration Tool

7) You can search for the information of the wireless network by pressing the BSS Info button.



8) When you press the BSS Info button, information about the SSID, BSSID, Network Model, and Encryption information of the network in close range will be shown as follows.



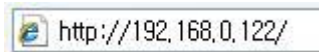


## 4-3 Web browser

Our printer supports the security enhanced https protocol as well as http. When SSL of the webserver of our printer is enabled, you must enter the address with “https” instead of “http” in the address bar to connect to the web-server.

(Automatic connection will be made when connecting with the configuration tool.)

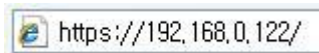
When SSL of the web-server is enabled,



\* a security warning window will pop when you try to connect with https.

Accept the certificate provided by the printer in the warning window and continue.

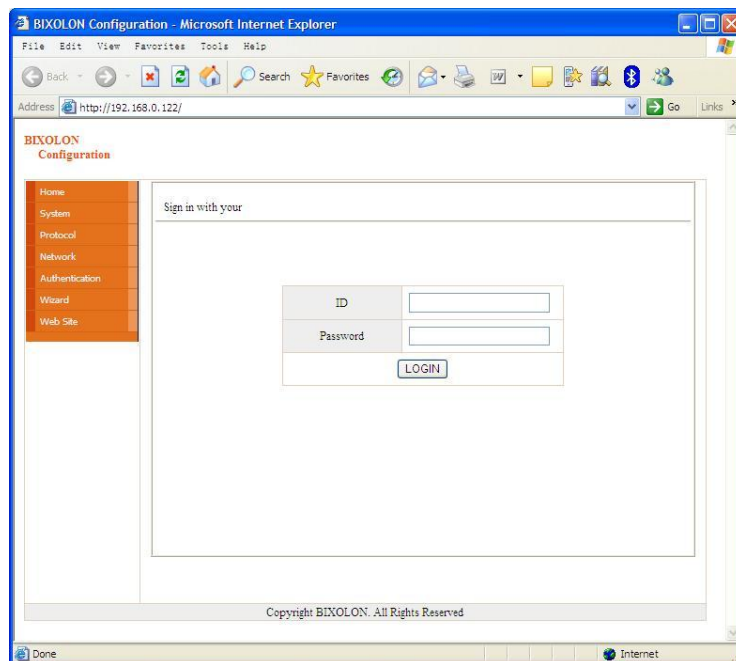
When SSL of the web-server is disabled,



1) Enter the IP address of the printer in the address bar, and the following login window will pop up.

Enter the ID and Password set for the printer, and then click [OK]

(Default setting values are ID: “admin”, Password: “password”.)



# Net Configuration Tool

- 2) When the ID and Password match the ones registered in the printer, the following window will be opened.  
WLAN configuration is possible.

Home, System, Protocol, Network (WLAN), and Authentication can be configured from this window, and the wizard mode is also provided for easier step by step configuration.

