

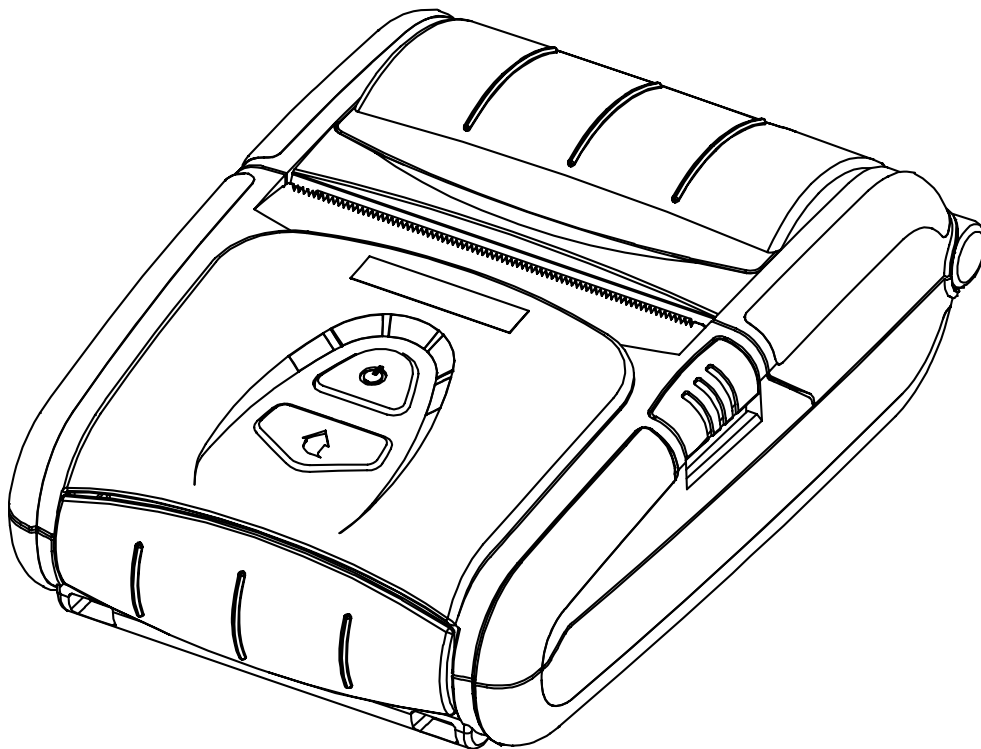
BIXOLON®

Bluetooth Connection Manual

SPP-R300

Mobile Printer

Rev. 1.00



<http://www.bixolon.com>

■ Table of Contents

1. Manual Information..... 3

2. Precautions 3

3. General Sequence for Bluetooth Connections 3

4. Bluetooth Connection Instructions 4

4-1 Connecting with an Intermec PDA (Device: CN2B, OS: Pocket PC 4.20.0) 5

4-2 Connecting with a SYMBOL PDA (Device: SYMBOL MC70, OS: Windows Mobile 5.0)..... 9

4-3 Connecting with an HP PDA (Device: iPAQ hx2700, OS: Windows Mobile 5.1.1702) 14

4-4 Connecting with a Mobile Compia PDA (Device: M3, OS: WinCE 5.0)..... 18

4-5 Connecting with an InnoTeletek PDA (Device: MC3000, OS: WinCE 4.2) 23

4-6 Connecting with a Widfly PDA (Device: WF35, OS: WinCE 5.0) 27

4-7 Connecting with Bluetooth Dongle (BlueSoleil IVT Stack) 30

4-8 Connecting with Bluetooth Dongle (Widcomm Stack)..... 34

1. Manual Information

This Bluetooth Connection Manual provides information on the connection of Bluetooth-enabled devices (PDAs, PCs, etc.) with the printer (SPP-R300).

We at BIXOLON maintain ongoing efforts to enhance and upgrade the functions and quality of all our products. In following, product specifications and/or user manual content may be changed without prior notice.

2. Precautions

2-1 To connect the printer with another device via Bluetooth, the devices must be within 10m of one another. The connection is broken if the distance between devices exceeds 10m.

2-2 The maximum separating distance may be shortened if transmission obstacles, such as cement walls, are present.

2-3 If a device (such as a microwave oven, wireless LAN, etc.) that uses the same frequency is present, transmission may be interrupted. Separate the printer and Bluetooth-enabled device from such interrupting devices by a distance of at least 5m.

3. General Sequence for Bluetooth Connections

Bluetooth connection methods vary by device. The following is the general sequence for Bluetooth connections, provided for reference purposes.

3-1 Turn on power of each device

- PDAs, PCs (Bluetooth Dongle), printers, etc.

3-2 Run a Bluetooth connection program on the PDA or PC.

3-3 Search for the peripheral with which to establish the connection.

- Search for the printer.

3-4 Register this Printer (SPP-R300) from the search results.

- If a security setting is enabled, register after entering the PIN Code.
(PIN Code=Pass Key: password of the Bluetooth device, Default code: 0000)

3-5 Test the connection.

- When connected, confirm the designated COM port of fixed COM port and print.

4. Bluetooth Connection Instructions

This manual focuses on the use of the following devices.

Please use this manual as a guide when using devices other than those listed here.

- Intermec PDA (Device: CN2B, OS: Pocket PC 4.20.0)
- SYMBOL PDA (Device: SYMBOL MC70, OS: Windows Mobile 5.0)
- HP PDA (Device: iPAQ hx2700, OS: Windows Mobile 5.1.1702)
- Mobile Compia PDA (Device: M3, OS: WinCE 5.0)
- InnoTeletek PDA (Device: MC3000, OS: WinCE 4.2)
- Widfly PDA (Device: WF35, OS: WinCE 5.0)
- Bluetooth Dongle (BlueSoleil IVT Stack)
- Bluetooth Dongle (Widcomm Stack)

After turning on the power of all Bluetooth devices, perform the connection process.

- PDAs, PCs (Bluetooth Dongle), printers (SPP-R300), etc.

4-1 Connecting with an Intermec PDA (Device: CN2B, OS: Pocket PC 4.20.0)

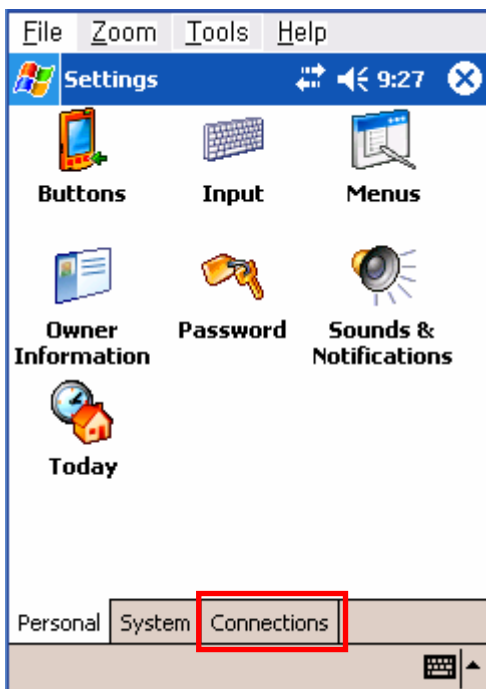
1) Click the  icon.



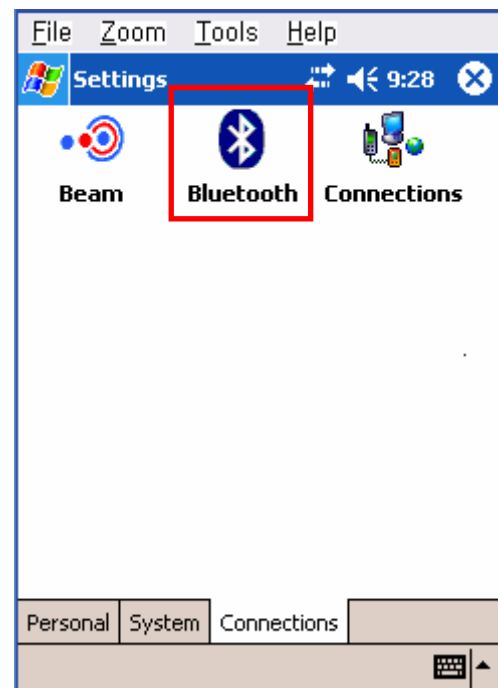
2) Click "Settings".



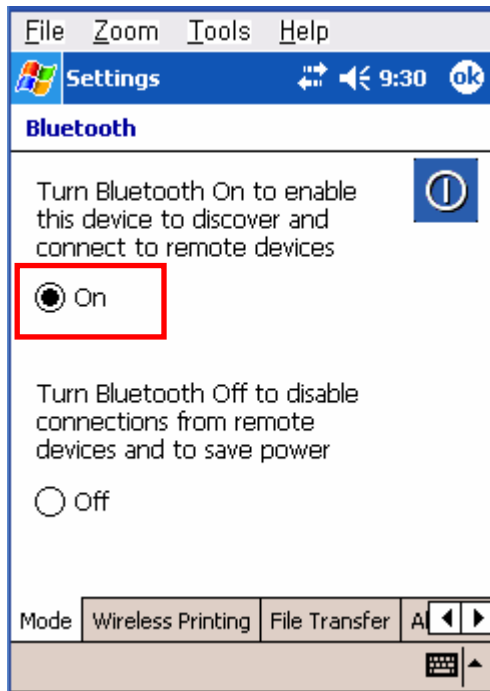
3) Click "Connections".



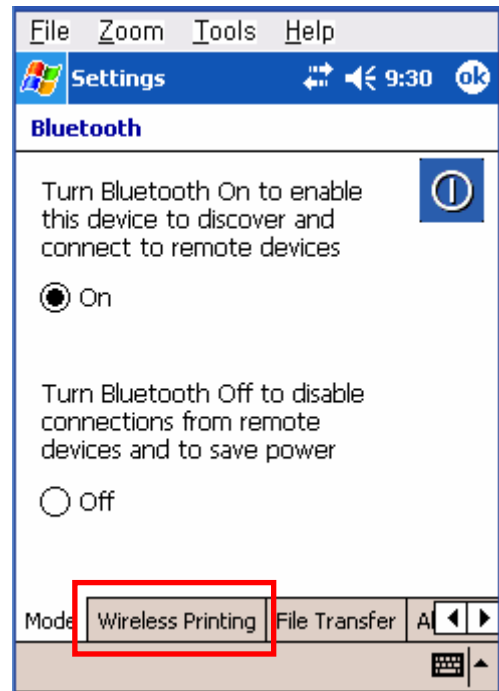
4) Click the "Bluetooth" icon.



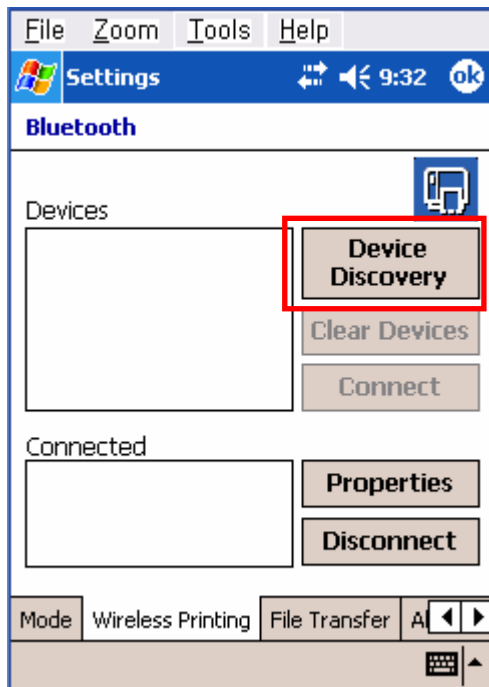
5) Click to check the “On” option.



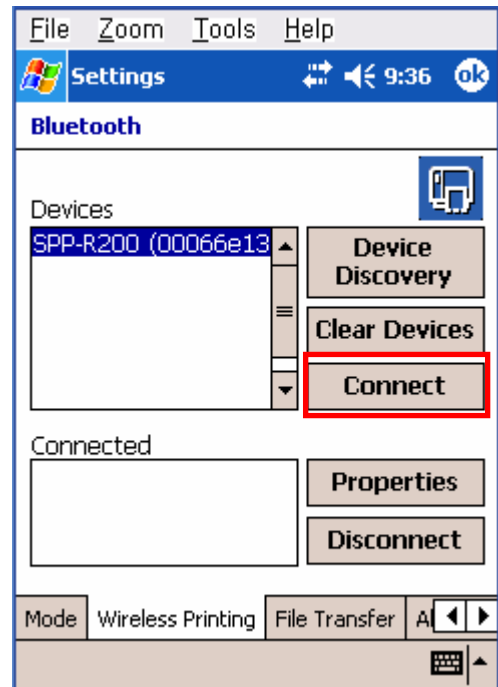
6) Click the “Wireless Printing” menu bar



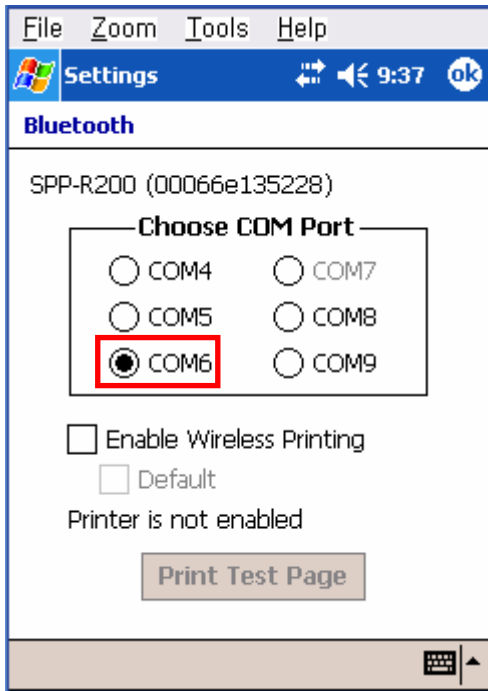
7) Click the “Device Discovery” button.



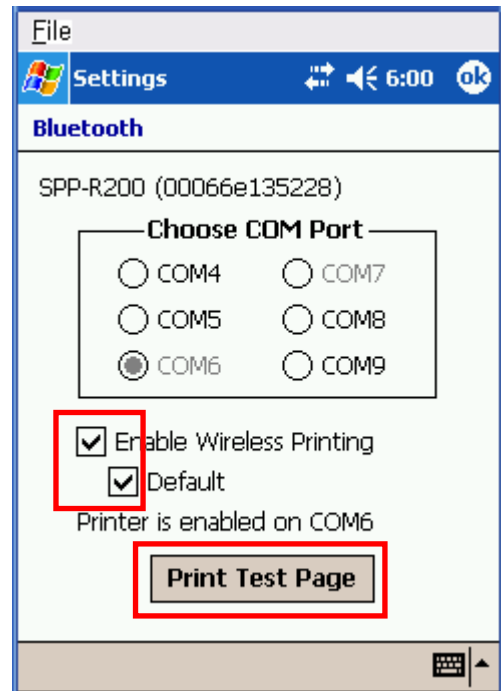
8) Select Devices of the SPP-R300, and click the “Connect” button.



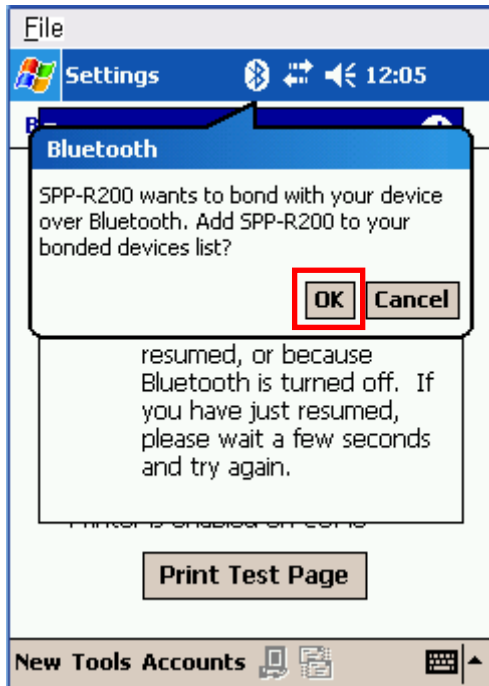
9) Select the COM port to be used.



10) Check the “Enable Wireless Printing” and “Default” checkboxes, and click the “Printer Test Page” button.



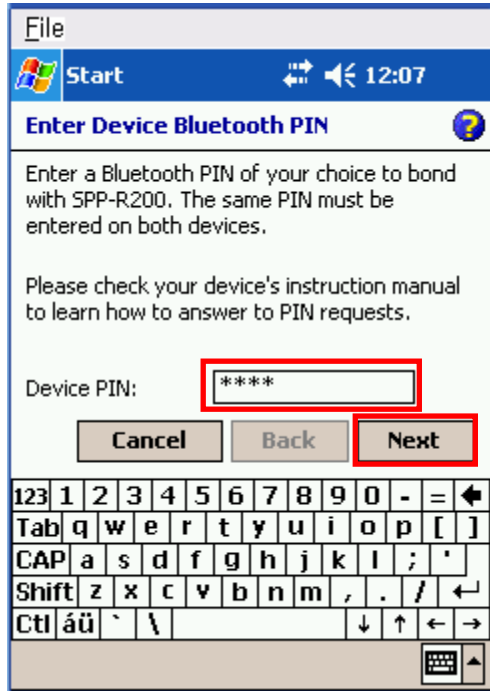
11) Click the “OK” button.



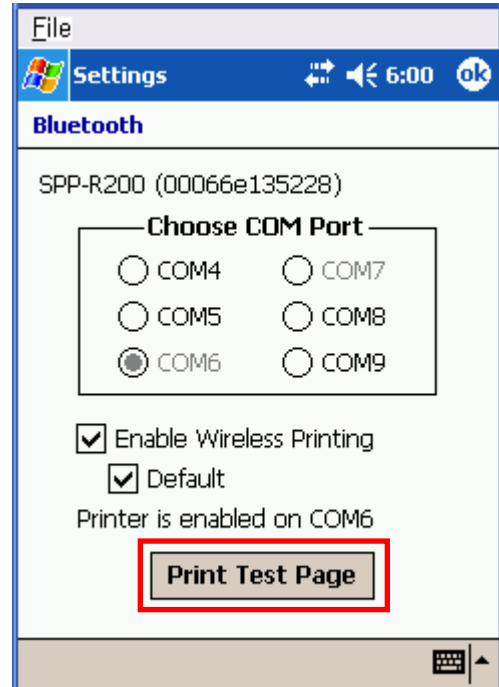
12) The PIN Code(Device PIN) window appears (if the SPP-R300 security function is enabled).




- 13) Input the PIN Code(Device PIN)
and click "Next". (Default code: 0000)

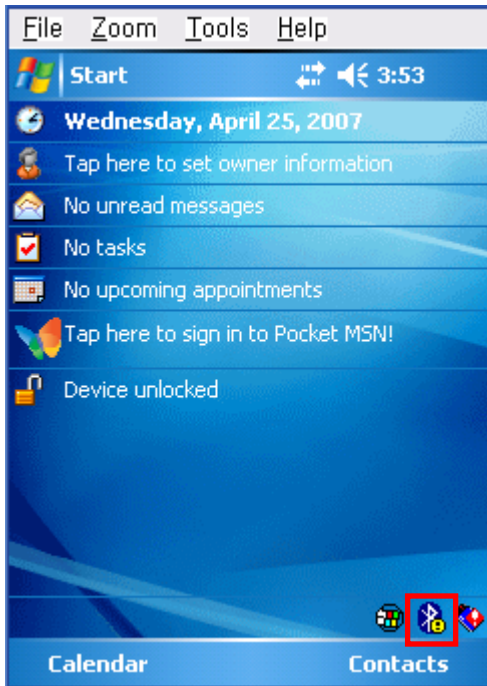


- 14) If after pressing the "Print Test Page" button, the BT LED of the SPP-R300 turns on and test printing is performed, the connection is complete.

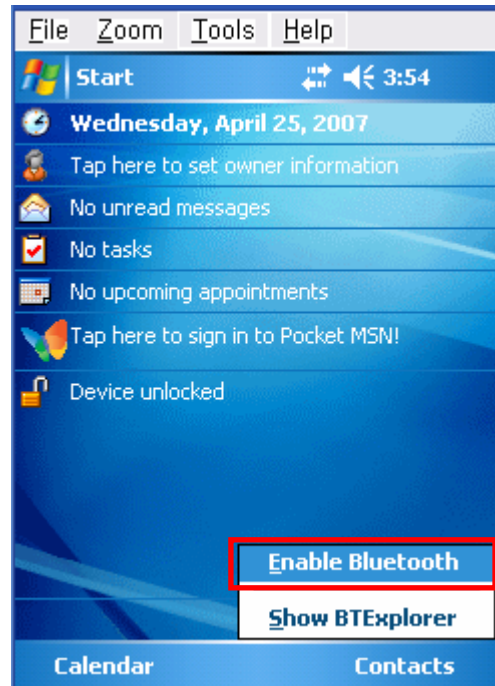



4-2 Connecting with a SYMBOL PDA (Device: SYMBOL MC70, OS: Windows Mobile 5.0)

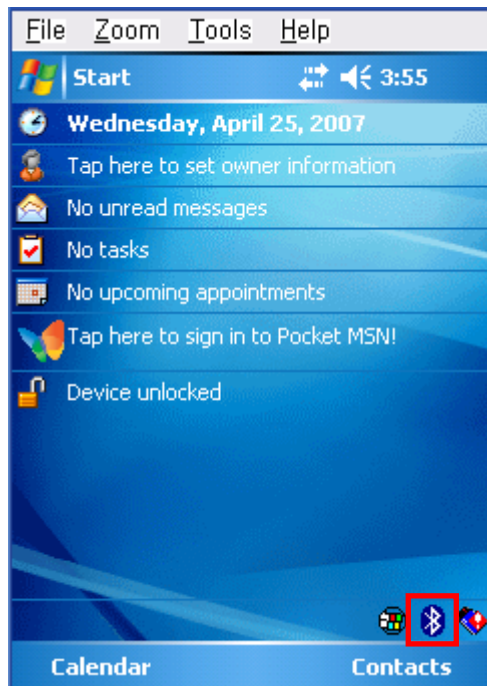
1) Click the  icon.



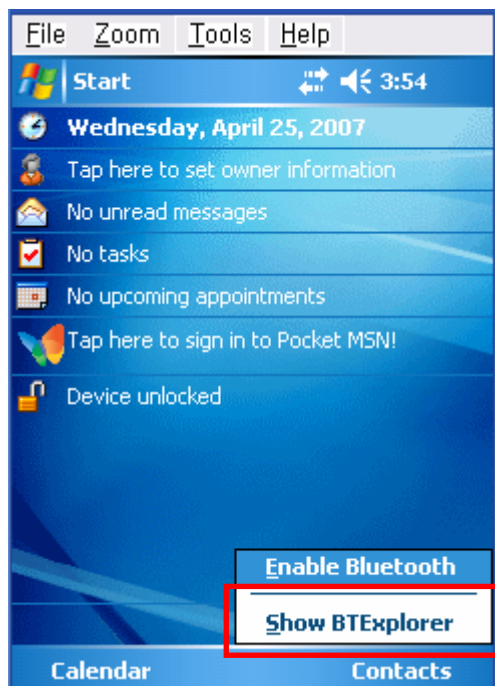
2) Click "Enable Bluetooth".



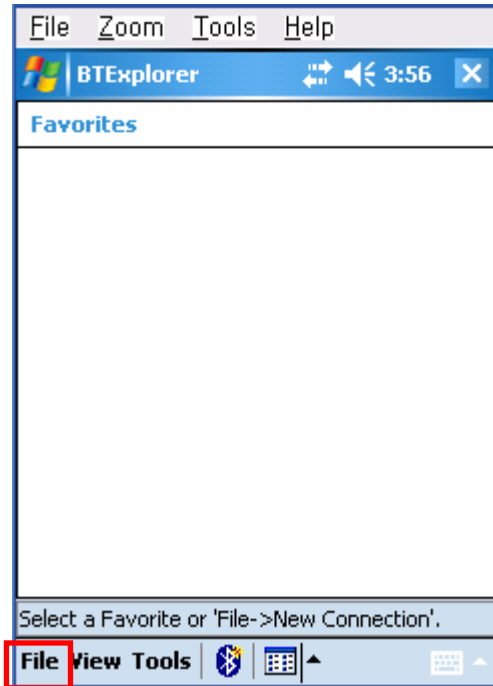
3) Click the  icon.



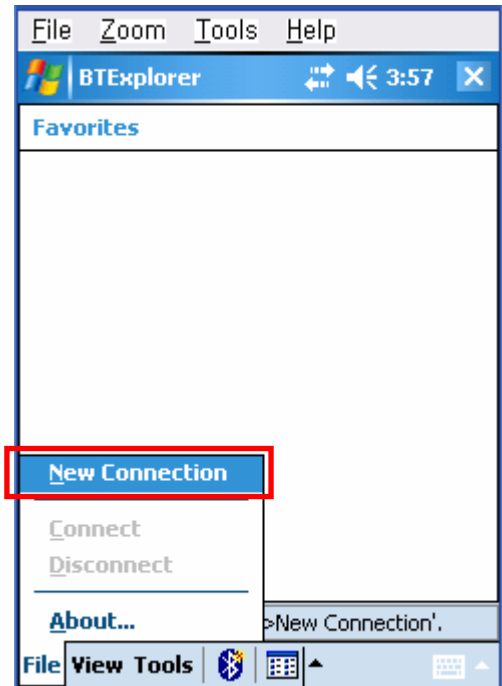
4) Click "Show BTE Explorer".



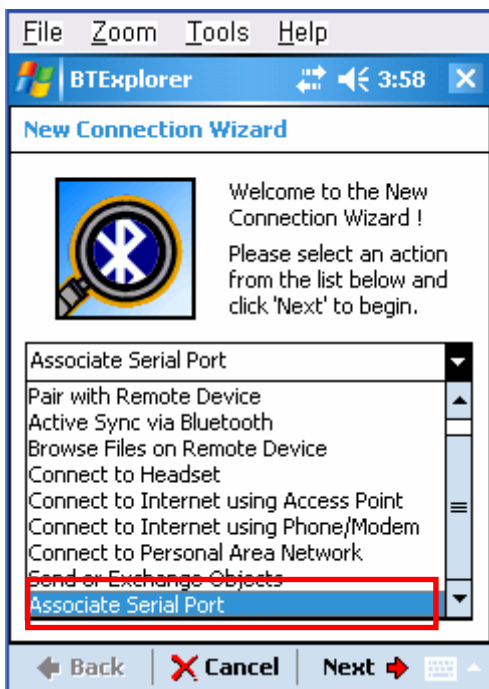
5) Click "File".



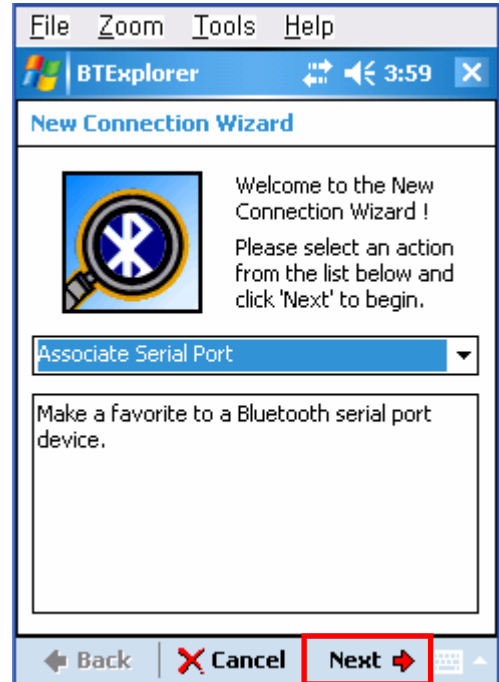
6) Click "New Connection".



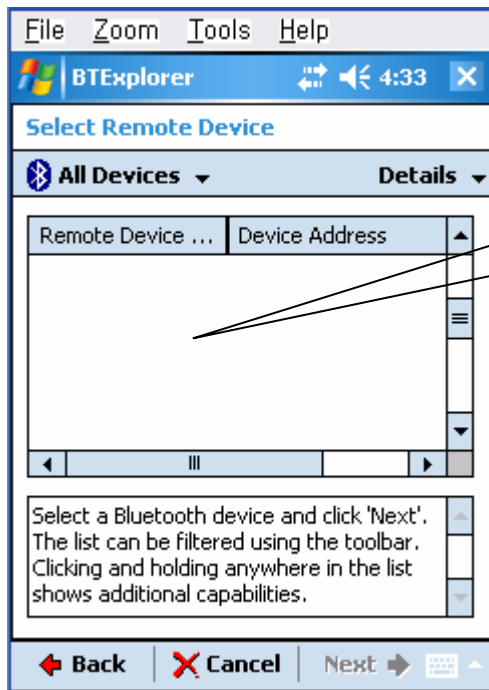
7) Click "Associate Serial Port".



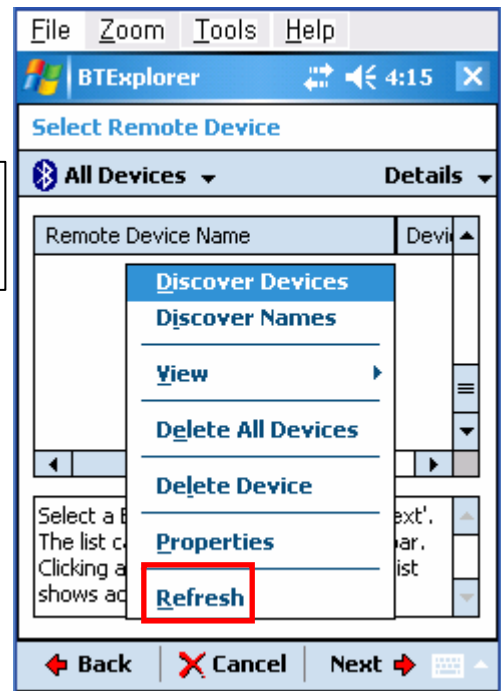
8) Click the "Next" button.



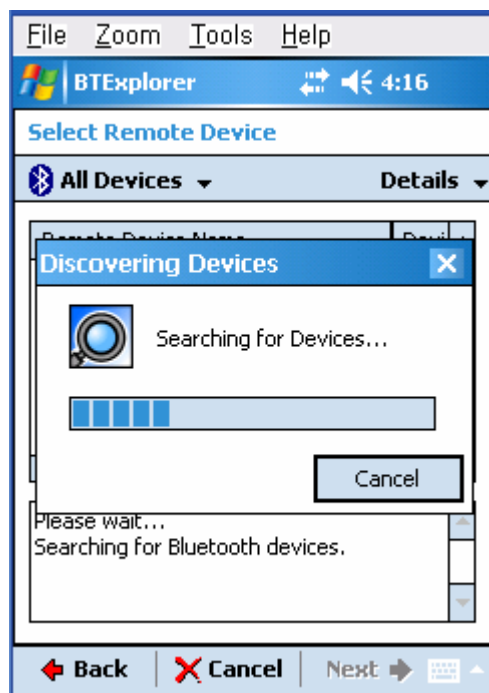
9) Click the List window for 2 seconds and the function folder appears.



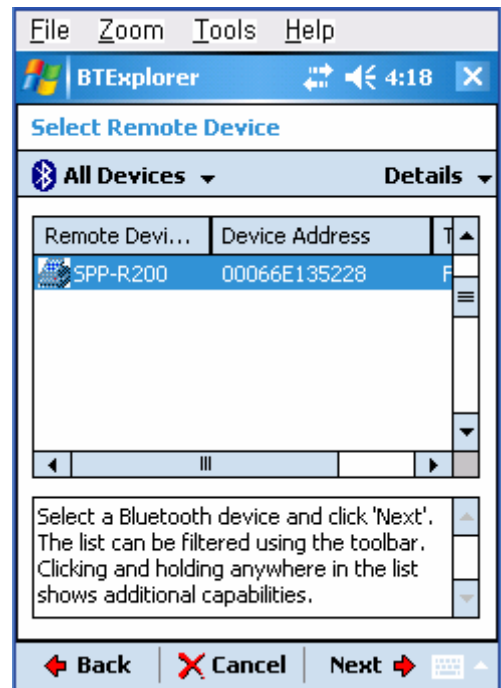
10) Click "Refresh".



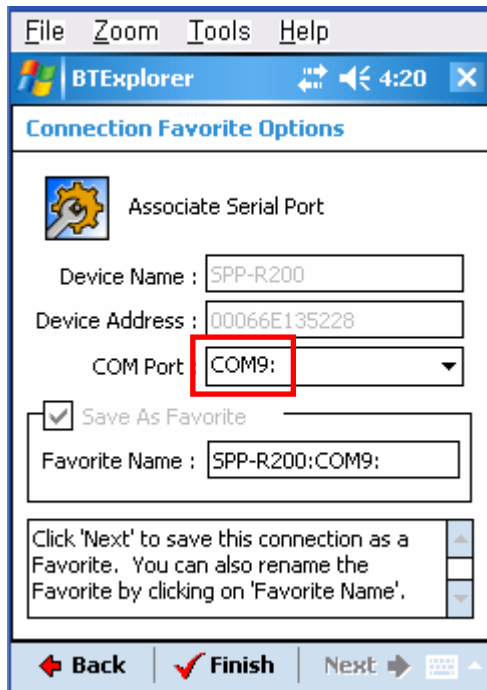
11) Bluetooth devices in the proximity are discovered.



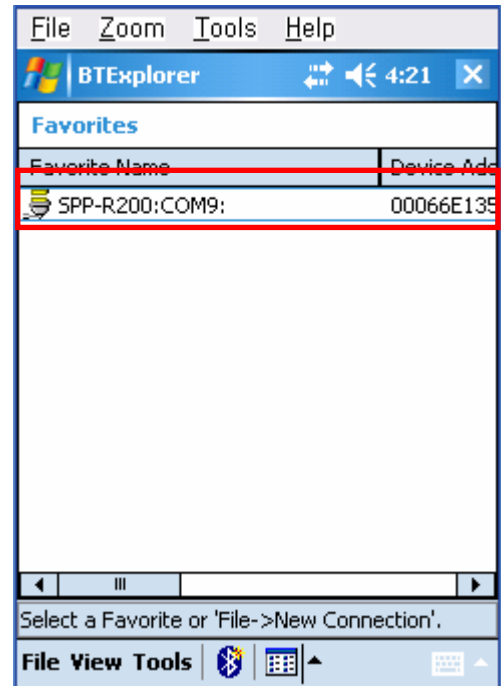
12) Select the Device Address of the SPP-R300, and click the "Next" button.



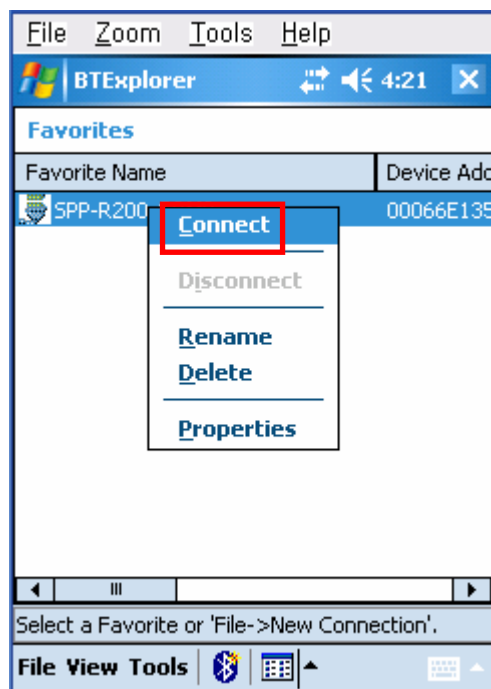
13) The Serial port is registered as COM9.



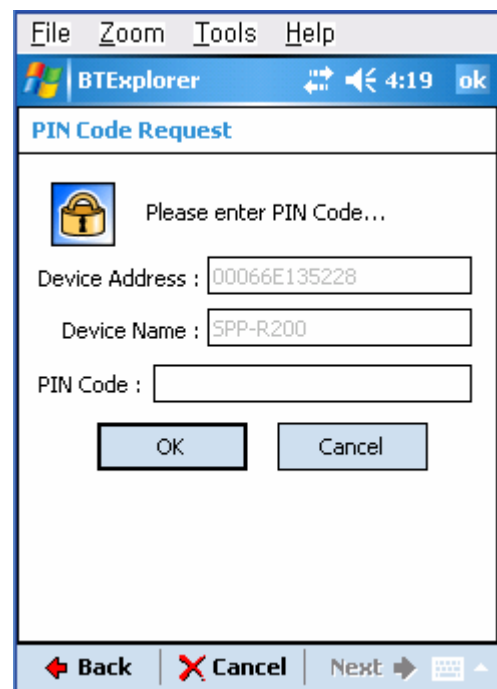
14) Click the SPP-R300 name for 2 seconds.



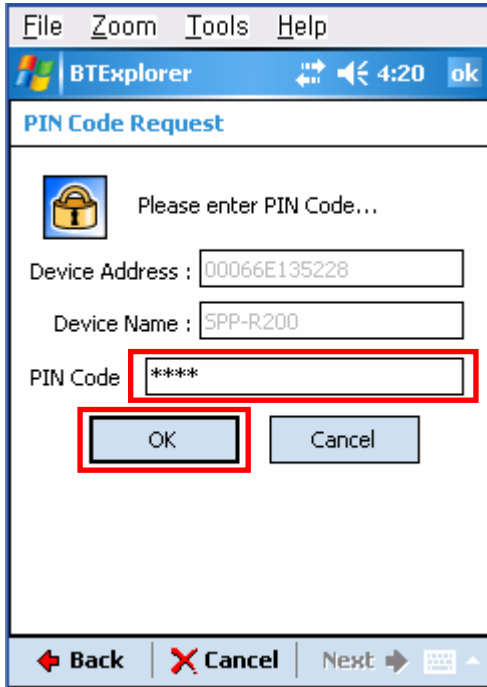
15) Click "Connect".



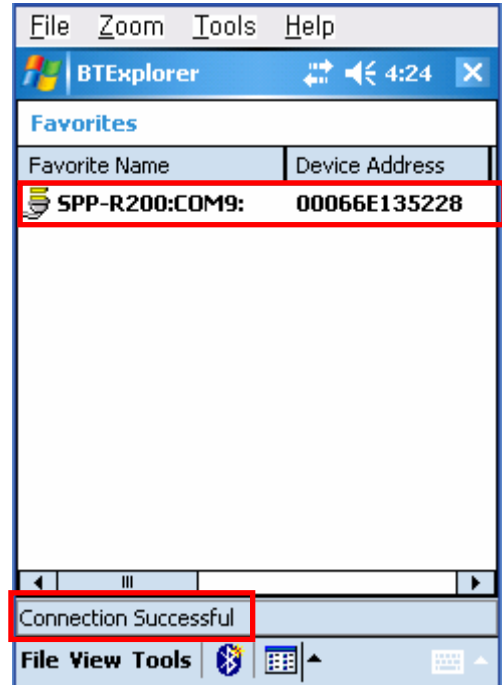
16) The PIN Code window appears (if the SPP-R300 security function is enabled).




- 17) Input the PIN Code and click “Enter”.
(Default PIN Code: 0000)

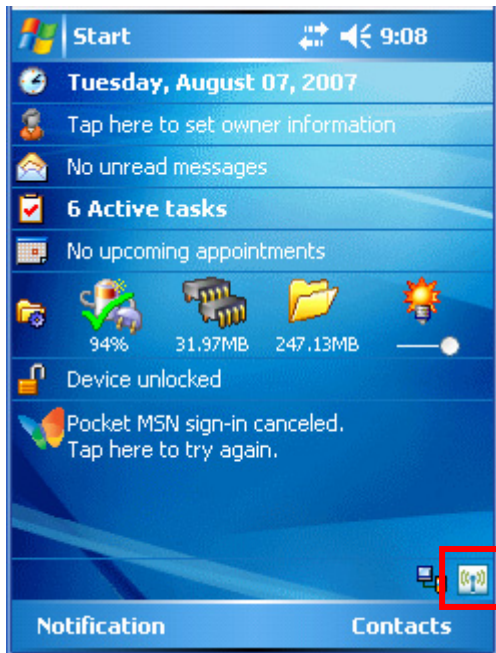


- 18) The “Connection Successful” message appears, and the connection is complete when the BT LED of the SPP-R300 turns on.



4-3 Connecting with an HP PDA (Device: iPAQ hx2700, OS: Windows Mobile 5.1.1702)

1) To run Bluetooth, first click the  icon at the lower right of the screen.



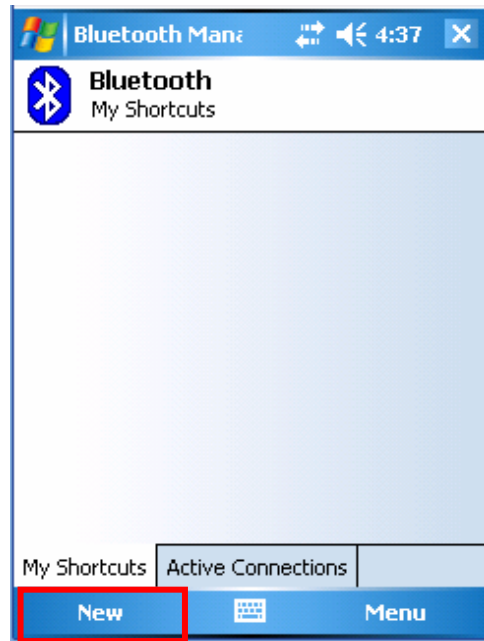
2) Click the Bluetooth logo button to activate the Bluetooth function.



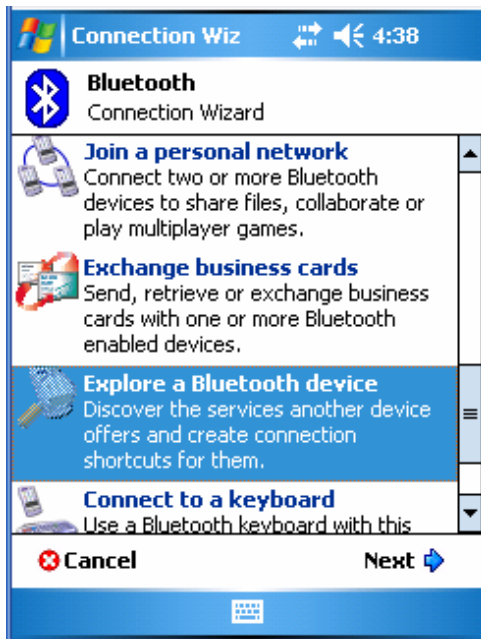
3) When activated, the Bluetooth button turns green. Click the "Manager" button to connect to the SPP-R300.



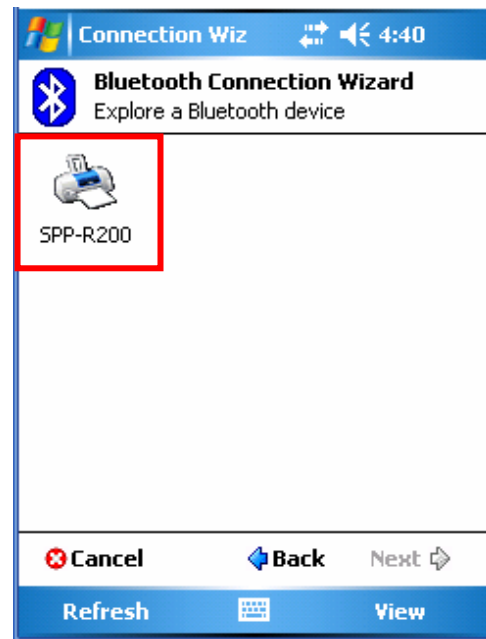
4) Click "New".



5) Click "Explore a Bluetooth device".



6) Click the SPP-R300 icon from the Bluetooth devices displayed in the search results.



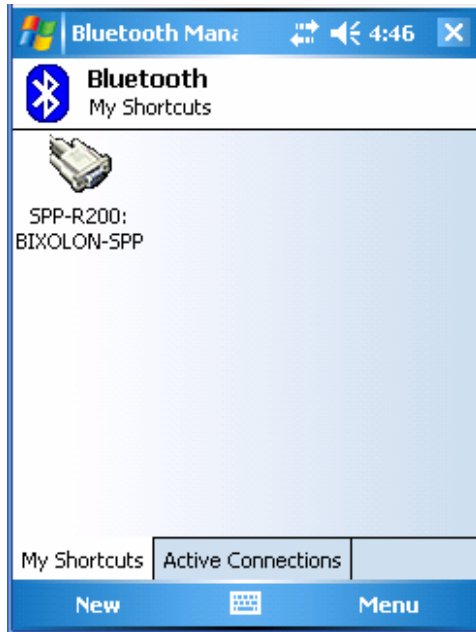
7) Select BIXOLON-SPP and click "Next".



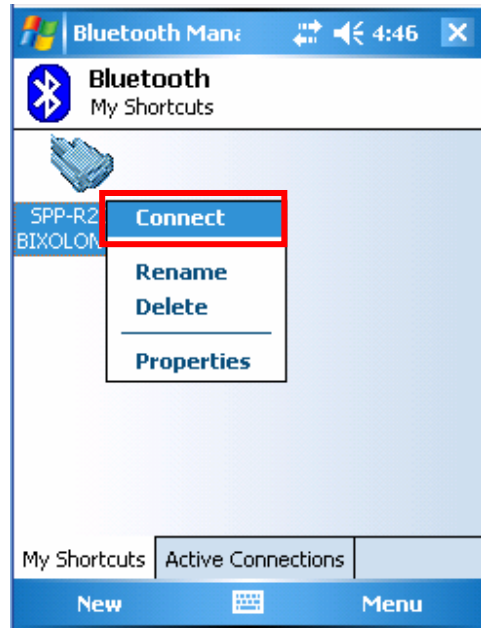
8) Click "Done".



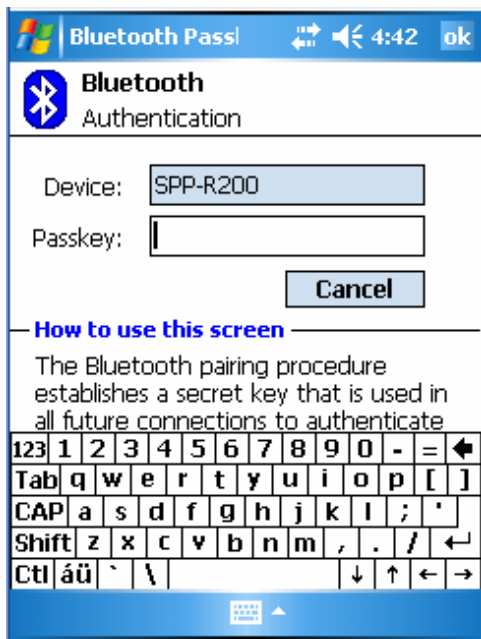
9) The SPP-R300 shortcut is produced.



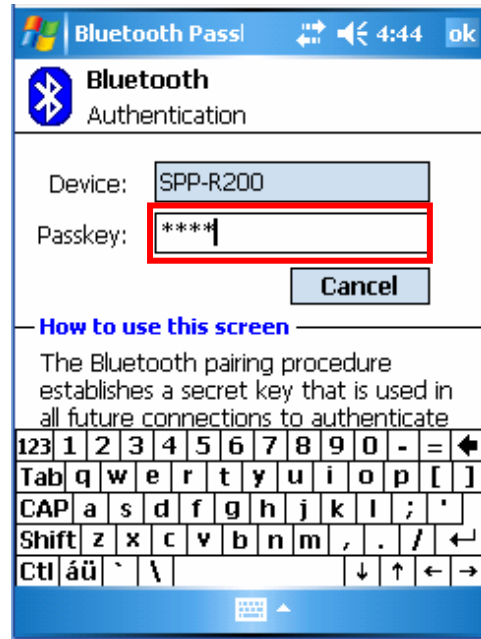
10) Clicking the shortcut for 2 seconds brings up the function folder. Click "Connect".



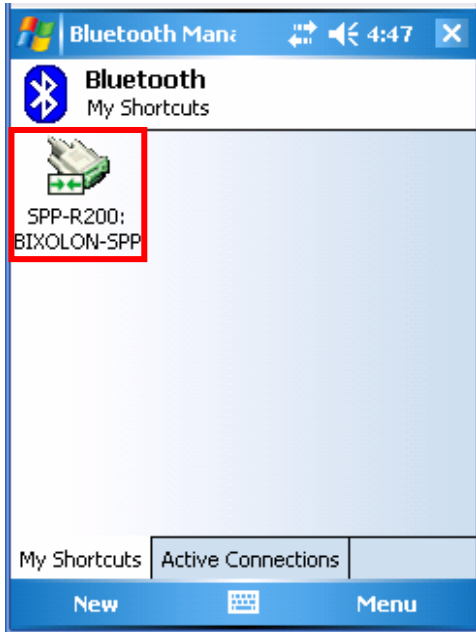
11) The Pass Key window appears (if the SPP-R300 security function is enabled).



12) Input the Pass Key and click "Enter" (Default Pass Key: 0000)



- 13) The shortcut changes to show a green indicator as shown below. The connection is complete when the BT LED of the SPP-R300 turns on.



4-4 Connecting with a Mobile Compia PDA (Device: M3, OS: WinCE 5.0)

1) Click the  icon.



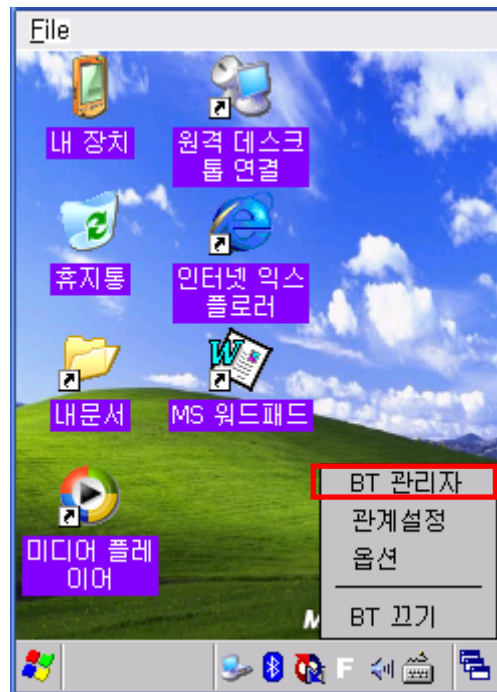
2) Click "BT On".



3) Click the  icon.



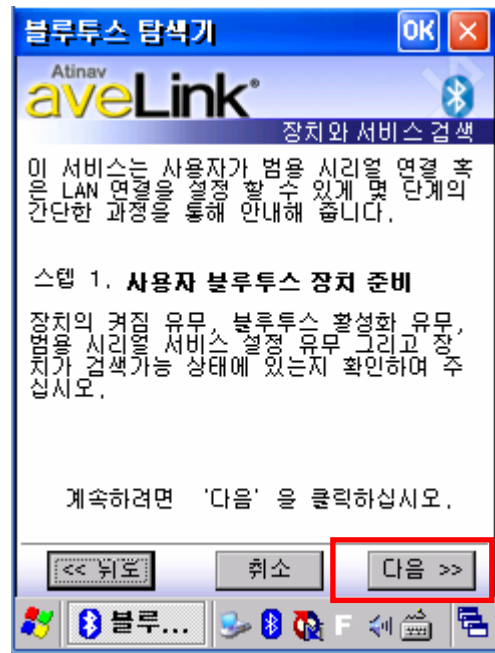
4) Click "BT Manager".



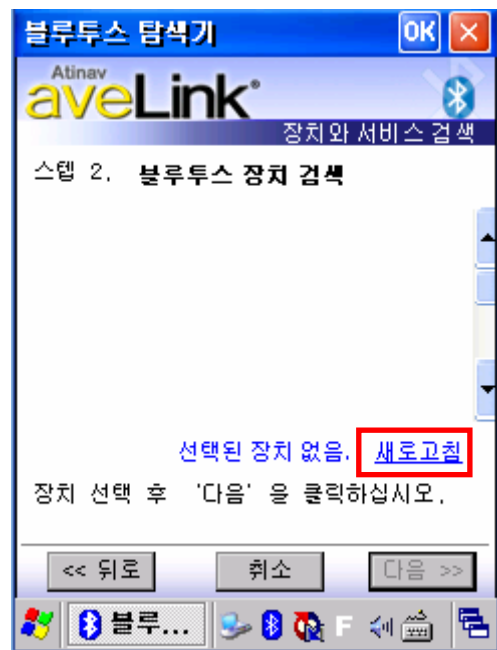
5) Click "Find All Devices".



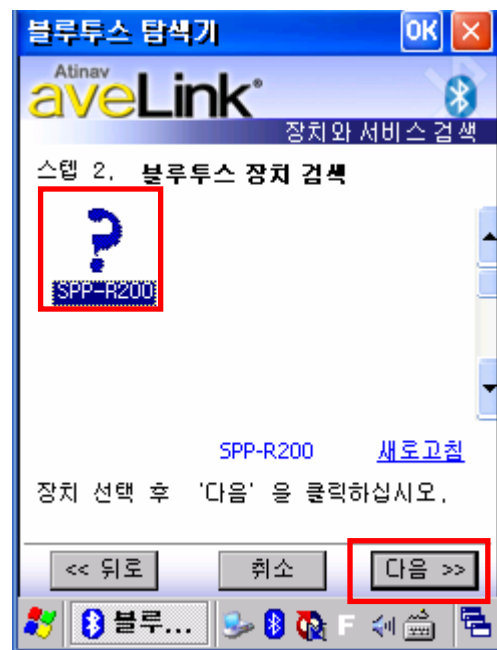
6) Click the "Next" button.



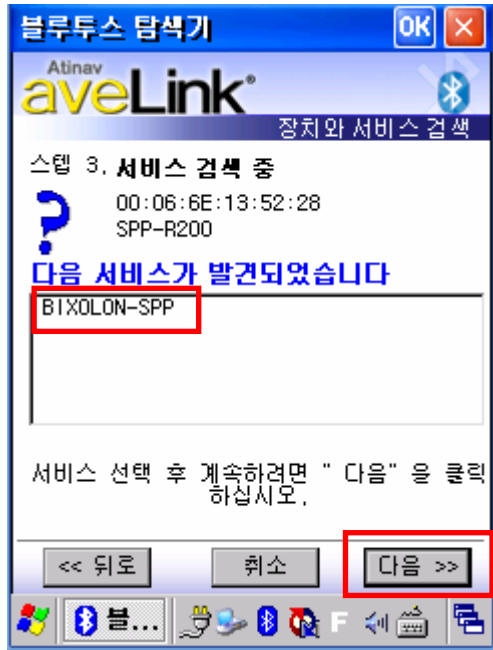
7) Click "Refresh".



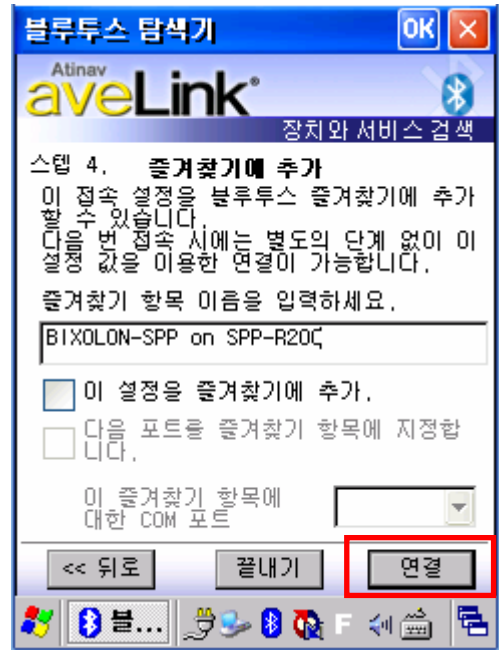
8) Click the SPP-R300 from the Bluetooth devices in the search list, and click "Next".



9) Select BIXOLON-SPP and click "Next".



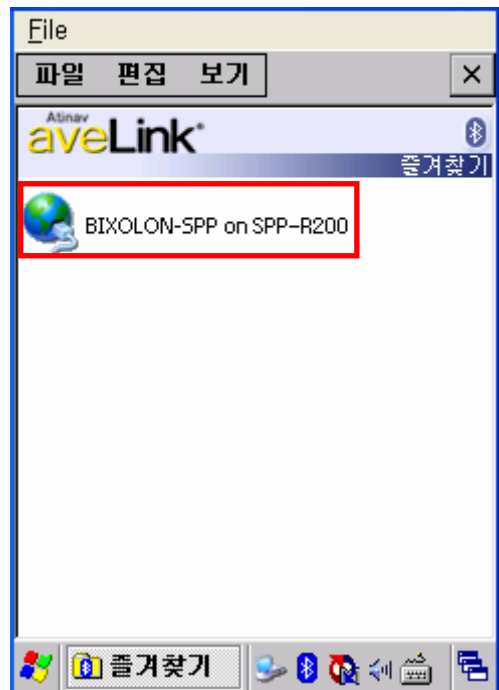
10) Click "Connect"



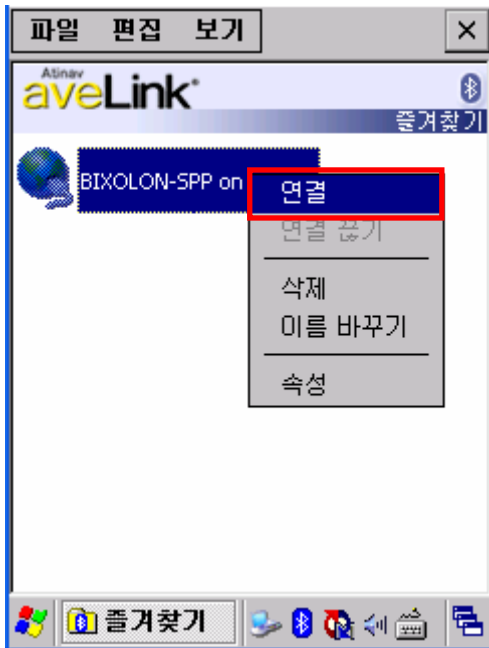
11) Click "My favorite device".



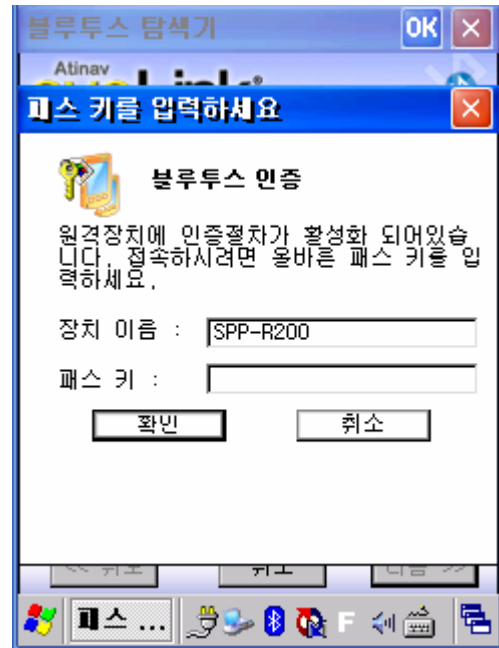
12) Clicking the shortcut for 2 seconds brings up the function folder. Click "Connect".



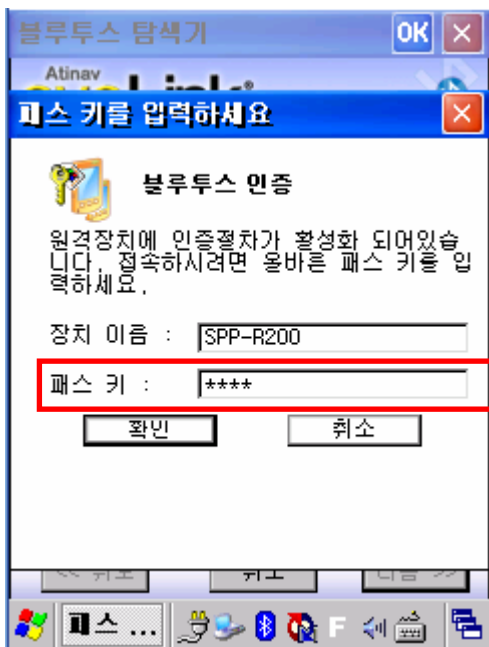
13) Click "Connect"



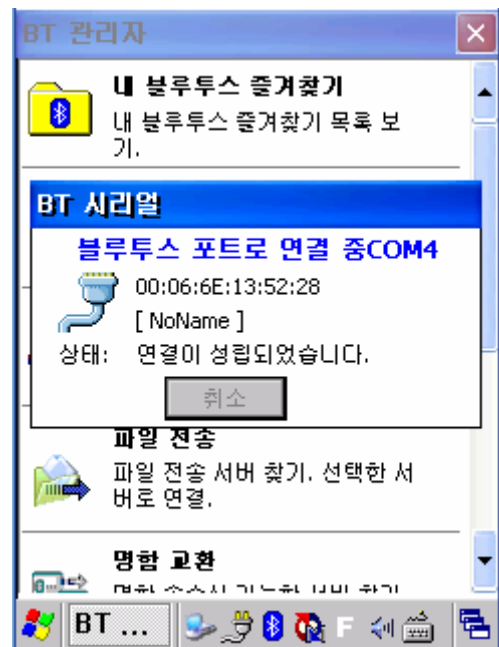
14) The Pass Key window appears (if the SPP-R300 security function is enabled).



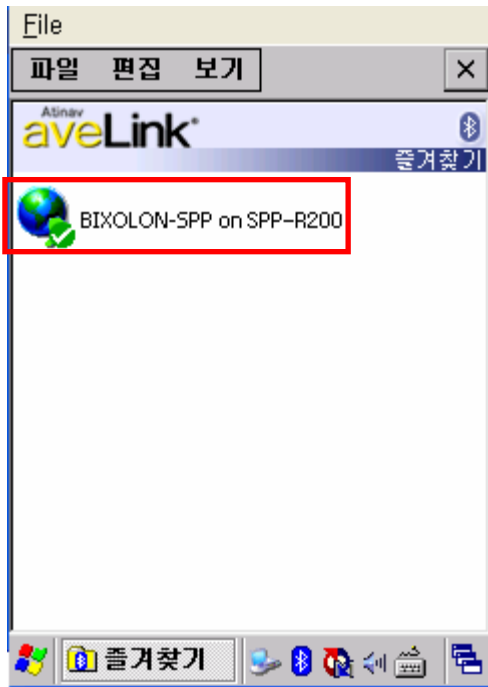
15) Input the Pass Key and click "Enter" (Default Pass Key: 0000)



16) The "Connection Established" message appears, and the connection is complete when the BT LED of the SPP-R300 turns on.



- 17) The connection is complete when the shortcut changes to show a green indicator as shown below.



4-5 Connecting with an InnoTeletek PDA (Device: MC3000, OS: WinCE 4.2)

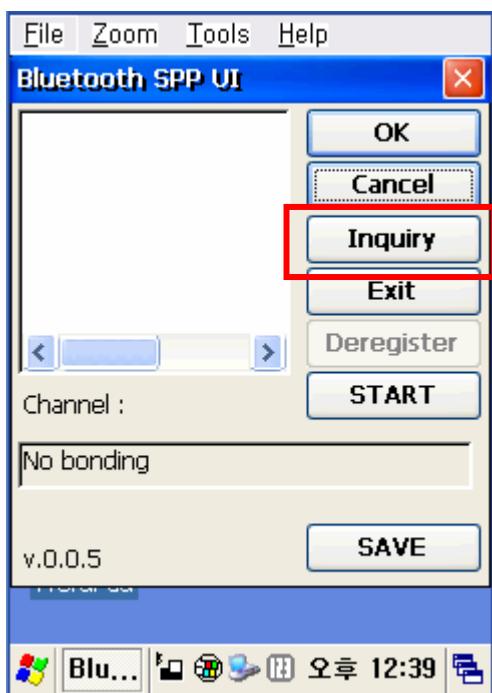
1) Click the "sppui" icon.



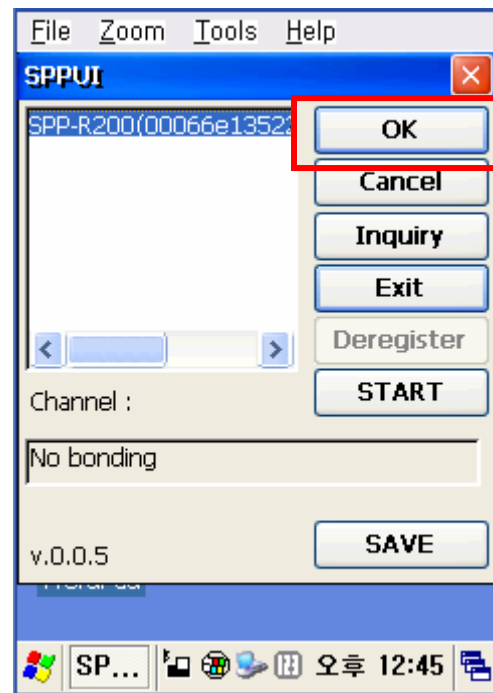
2) Click the Bluetooth icon.



3) Click the "Inquiry" button.



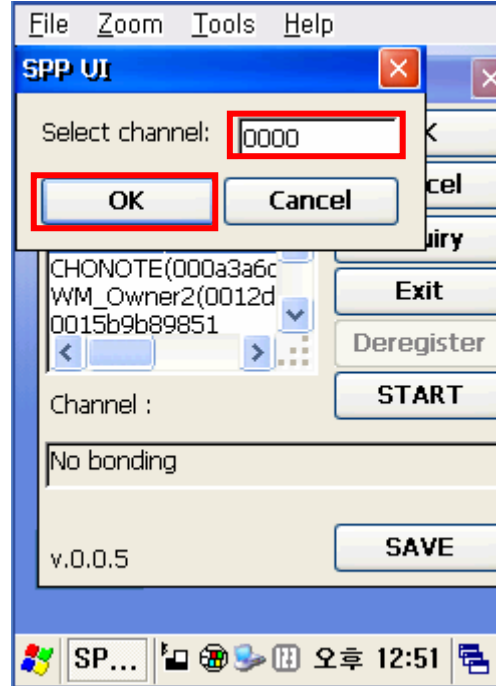
4) Select SPP-R300 and click "OK" button.



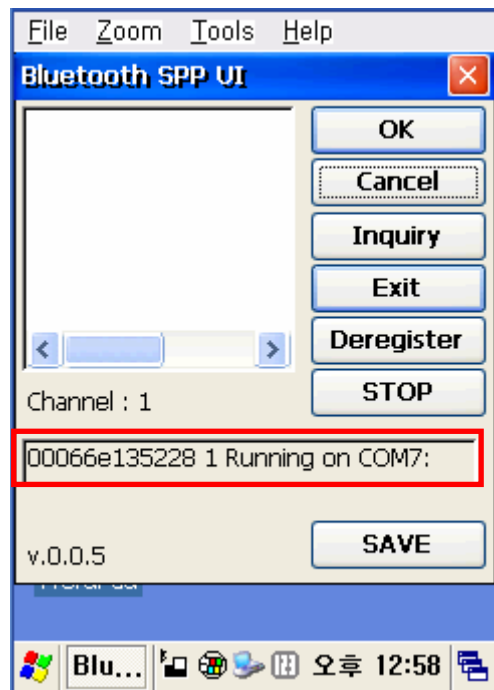
5) The PIN Code window(Select channel) appears (if the SPP-R300 security function is enabled).



6) Input the PIN Code and click "Enter".
(Default: 0000)



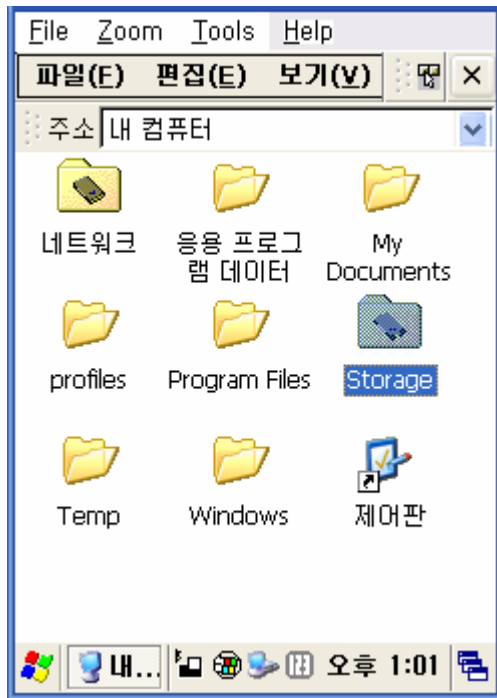
7) The Serial port is registered as COM7.



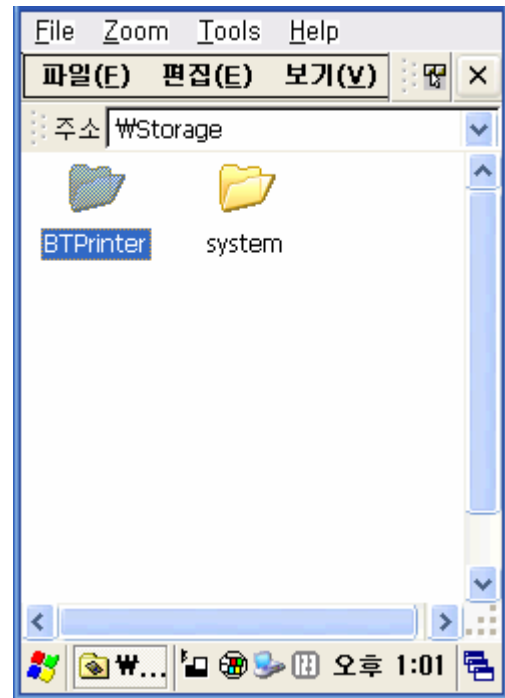
8) Click the "My Computer" icon.



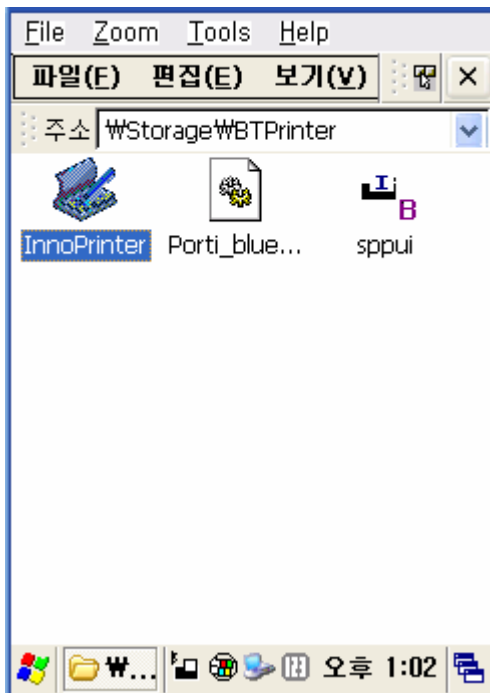
9) Click "Storage".



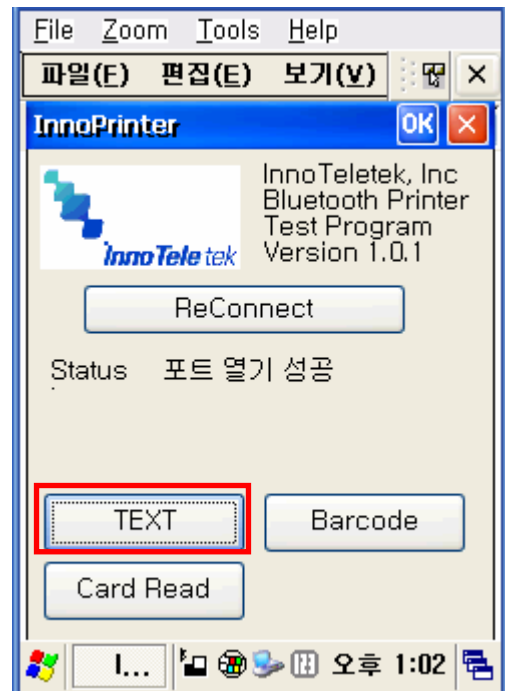
10) Click "BTPrinter".



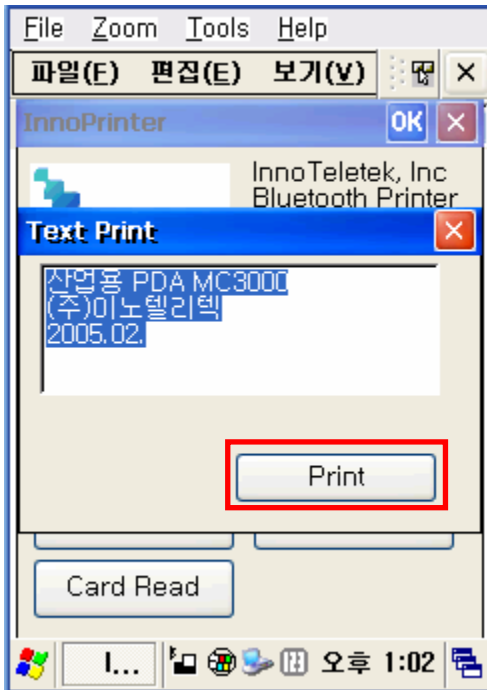
11) Click "InnoPrinter".



12) The "Port Opened" Status message appears, and the connection is complete when the BT LED of the SPP-R300 turns on. Click the "TEXT" button.



- 13) Enter text to be printed in the Text window and click the “Print” button. The text is printed by the Printer(SPP-R300).



4-6 Connecting with a Widely PDA (Device: WF35, OS: WinCE 5.0)

1) Click the  icon then "Settings".



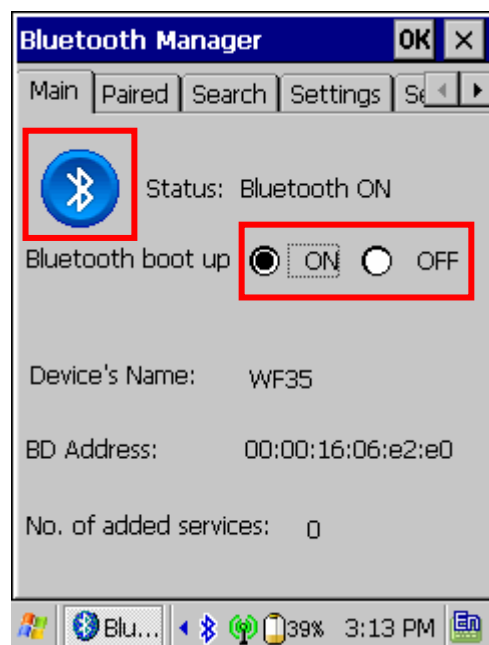
2) Click "Control Panel".



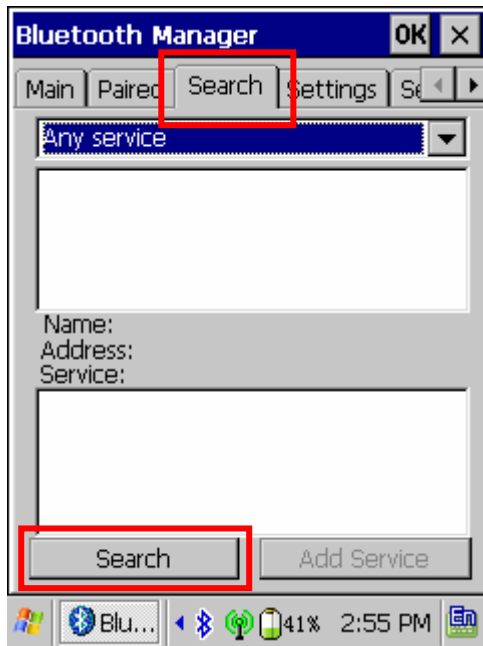
3) Click "Bluetooth Device Properties".



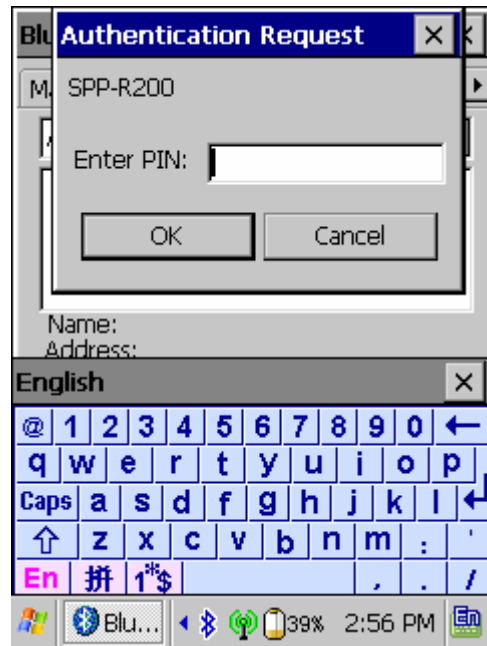
4) Click Bluetooth button. (select ON if Bluetooth is turned on automatically for every boot up of PDA.)



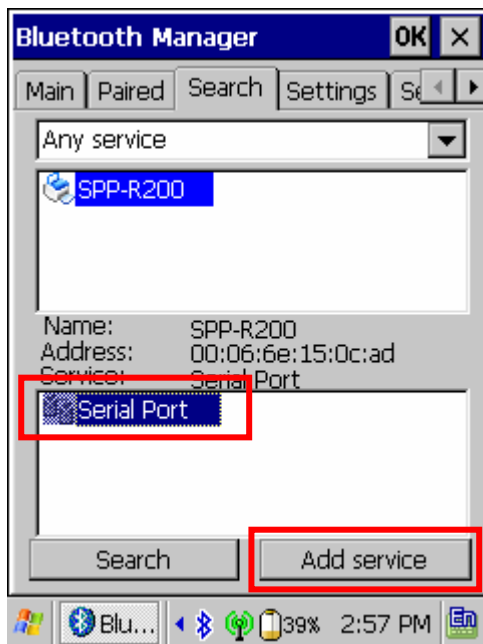
5) Click “Search” page then “Search” button.



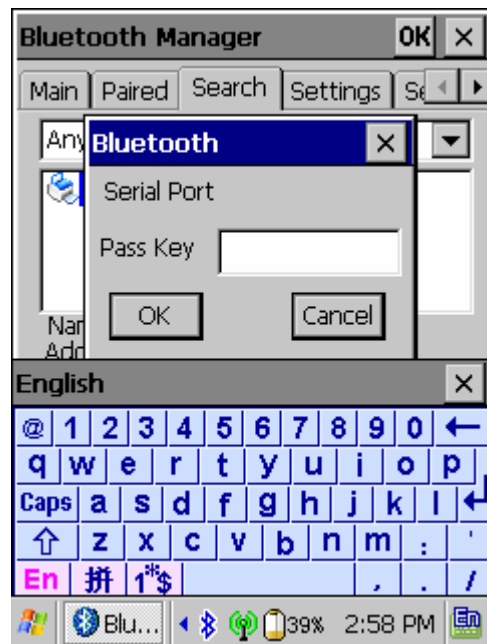
6) Enter PIN code (default “0000”) and Click “OK”.



7) SPP-R300 is searched with “Serial Port” service listed. Click “Add service”.



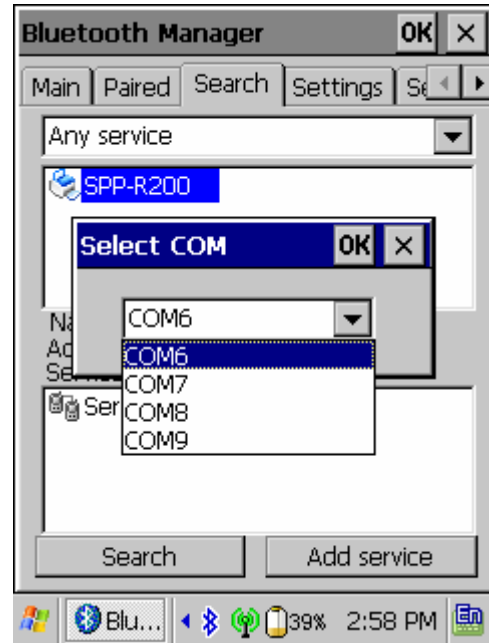
8) Enter PIN code (default “0000”) and Click “OK”.



9) Press "OK" to activate "Serial Port" service.



10) Select virtual local COM port for applications and click "OK". (e.g. COM port 6).

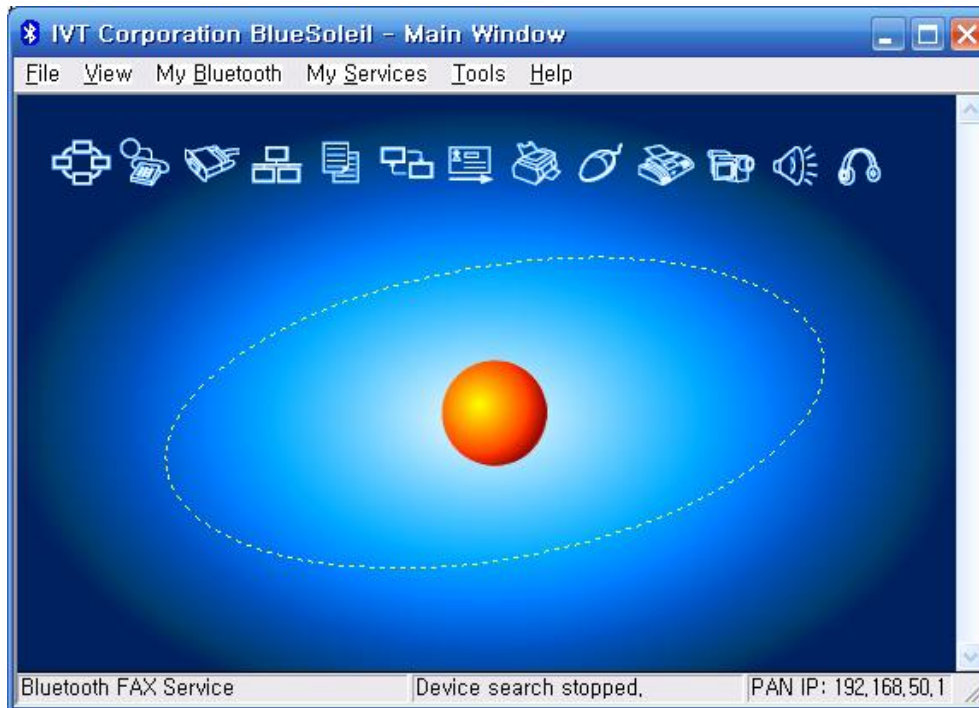


11) SPP-R300 is paired with WF35 and virtual local COM port is activated.

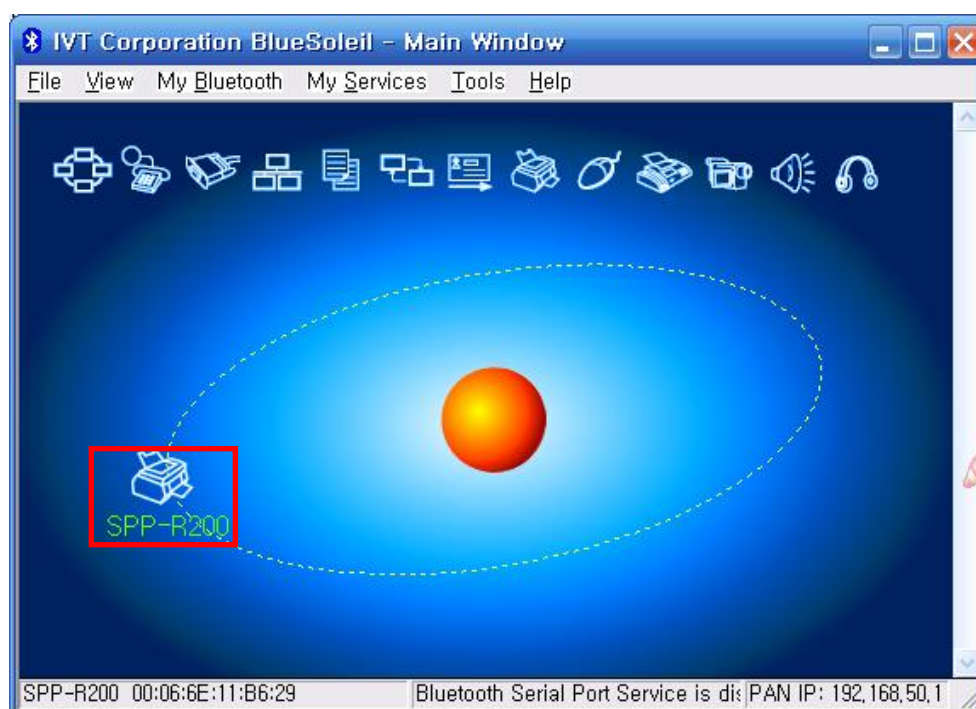


4-7 Connecting with Bluetooth Dongle (BlueSoleil IVT Stack)

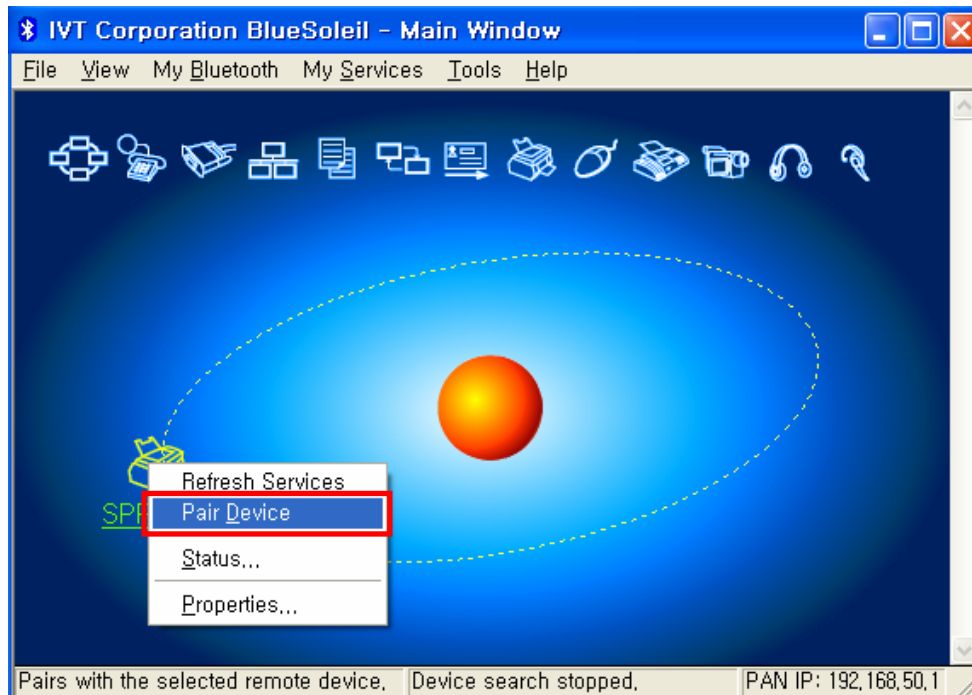
- 1) After purchasing Bluetooth Dongle, insert the CD in the PC and install Bluesoleil.
- 2) Connect Bluetooth Dongle to the USB port of the PC.
- 3) Click the Bluesoleil icon on the PC screen top.
- 4) Click the red sphere at the center of the Bluesoleil main screen.



- 5) The program initiates a search for Bluetooth devices in the proximity.

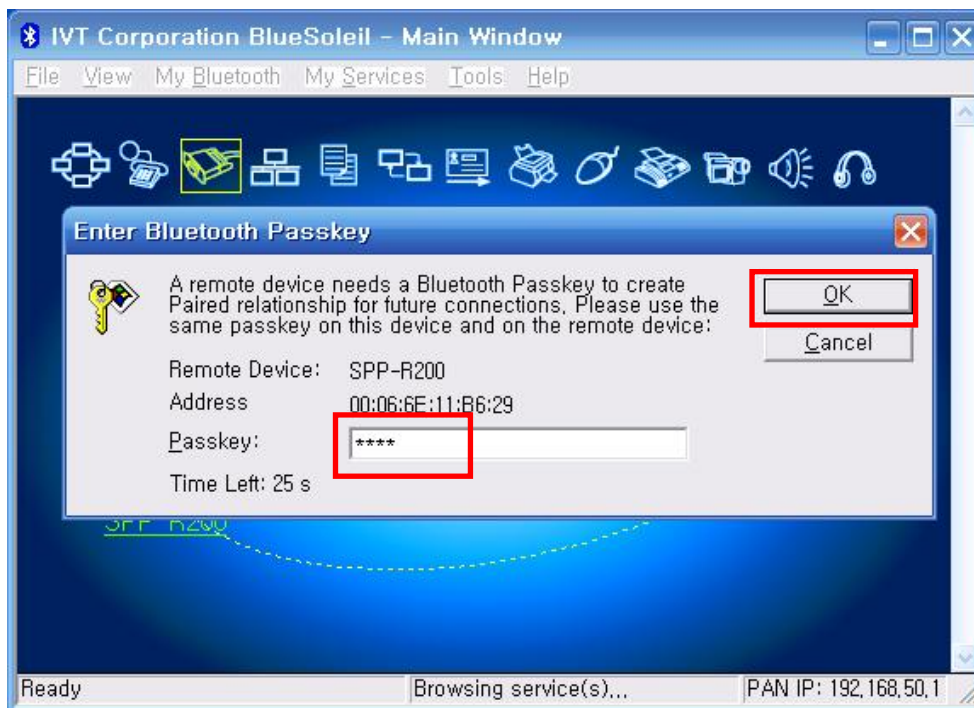


6) Click right button of the mouse above the "IFX-BT Icon" and select the "Pair Device".

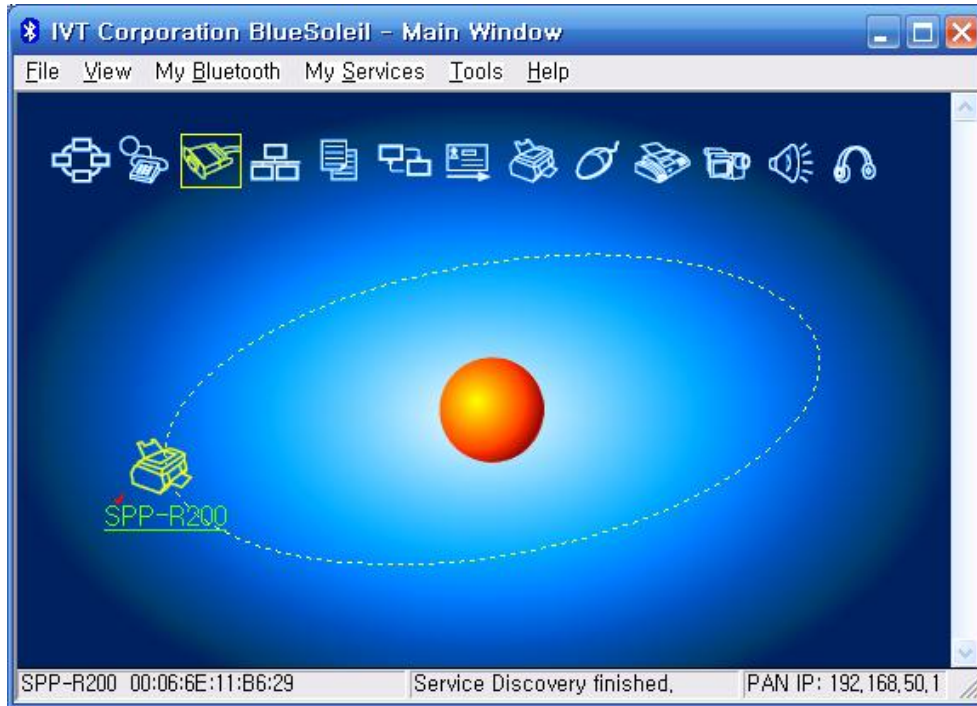


7) Enter the PIN Code in the Bluetooth Passkey window.

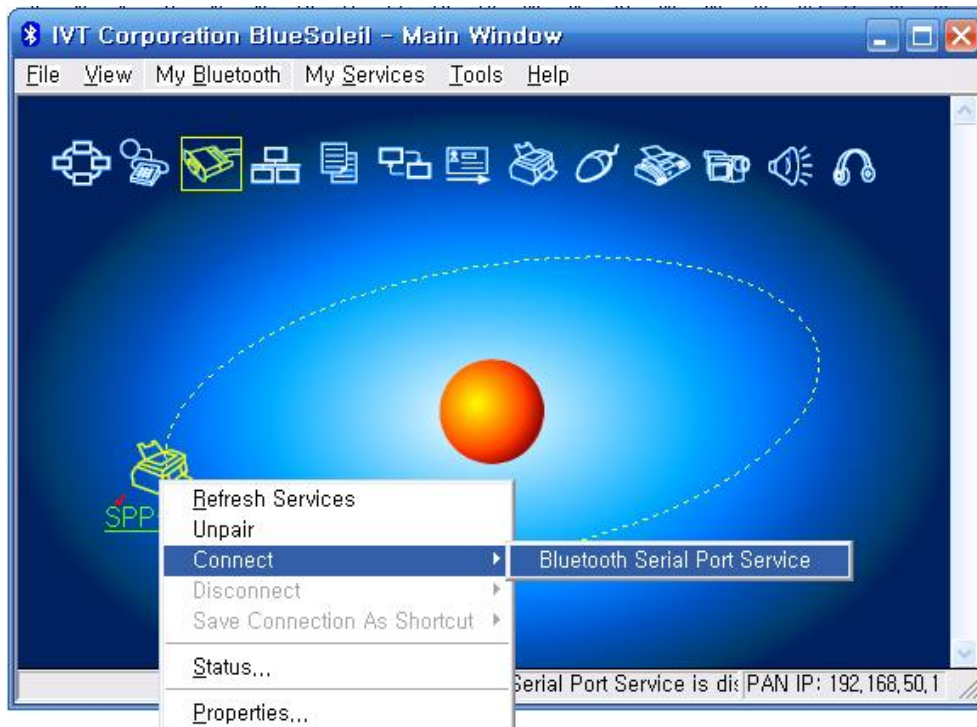
(Default Passkey: 0000)



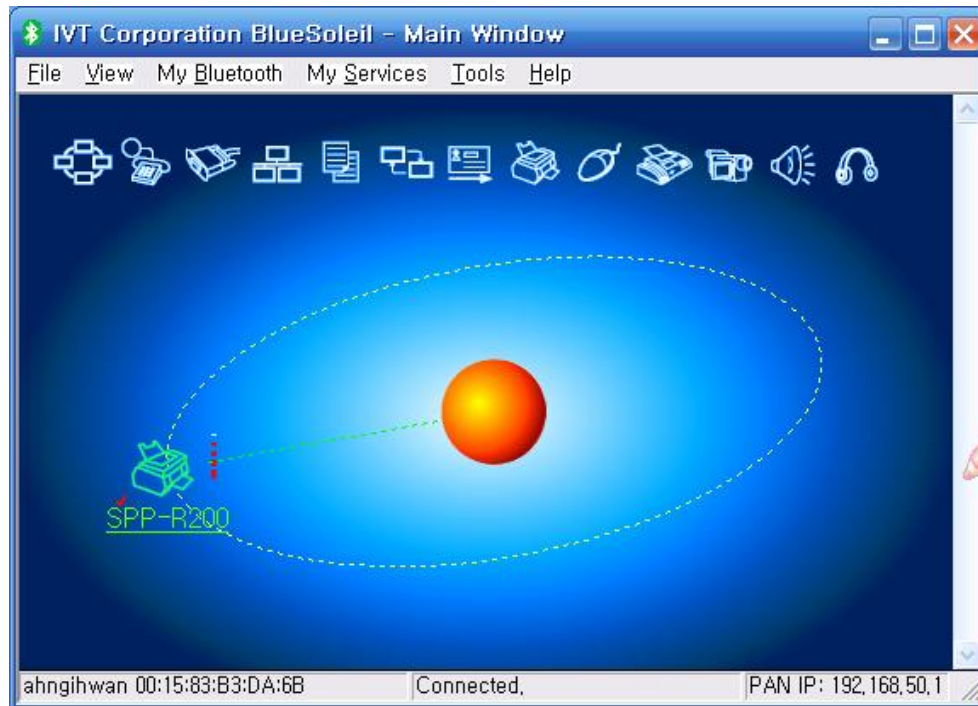
- 8) If the Passkey(PIN Code) is correct and pairing is completed, a red check symbol appears next to the SPP-R300 icon.



- 9) Click right button of the mouse above the "SPP-R300 Icon" and select the "Connect > Bluetooth Serial Port Service".



- 10) When the connection is established, the icon turns green, and a green dotted line appears as shown in the image below.

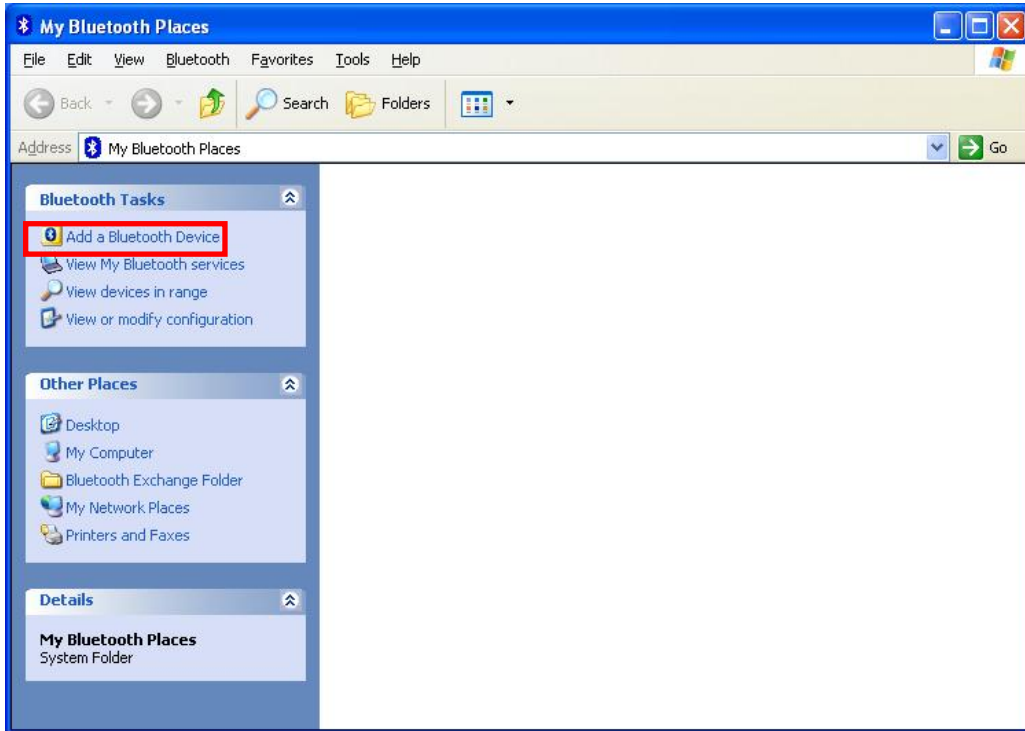


- 11) The connection is complete when the BT LED of the SPP-R300 turns on.
- 12) When the connection is complete, the message pictured below appears at the bottom right of the PC screen.
- The COM port number shown in the message indicates the COM port via which the SPP-R300 and the PC are connected.

* My Bluetooth COM Port 4 (COM4) is connected to remote device.

4-8 Connecting with Bluetooth Dongle (Widcomm Stack)

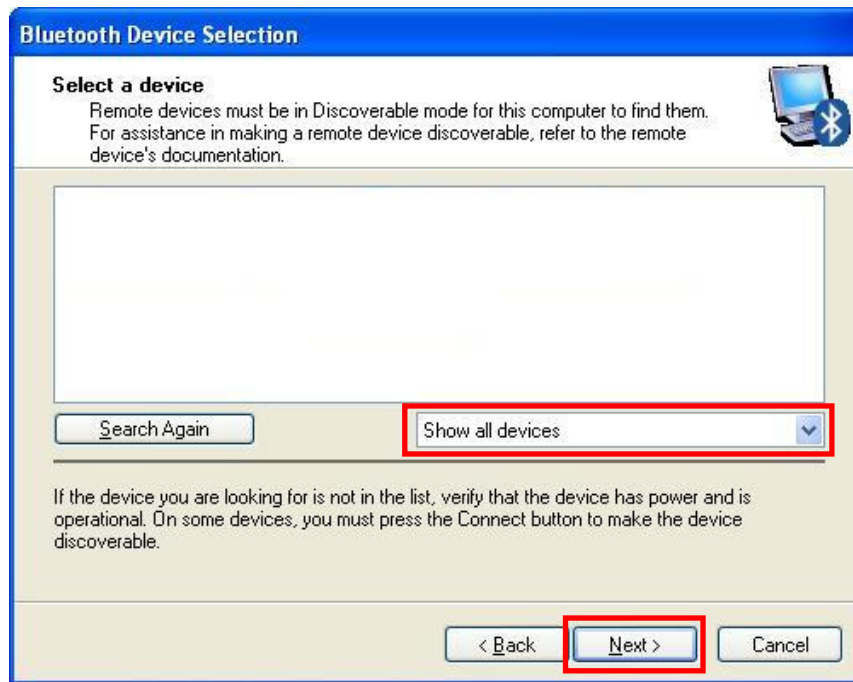
- 1) After purchasing Bluetooth Dongle, insert the CD in the PC and install Bluesoleil.
- 2) Connect Bluetooth Dongle to the USB port of the PC.
- 3) Click the My Bluetooth Places icon on the PC screen top.
- 4) Click "Bluetooth Tasks > Add a Bluetooth services"



- 5) Click "Next".



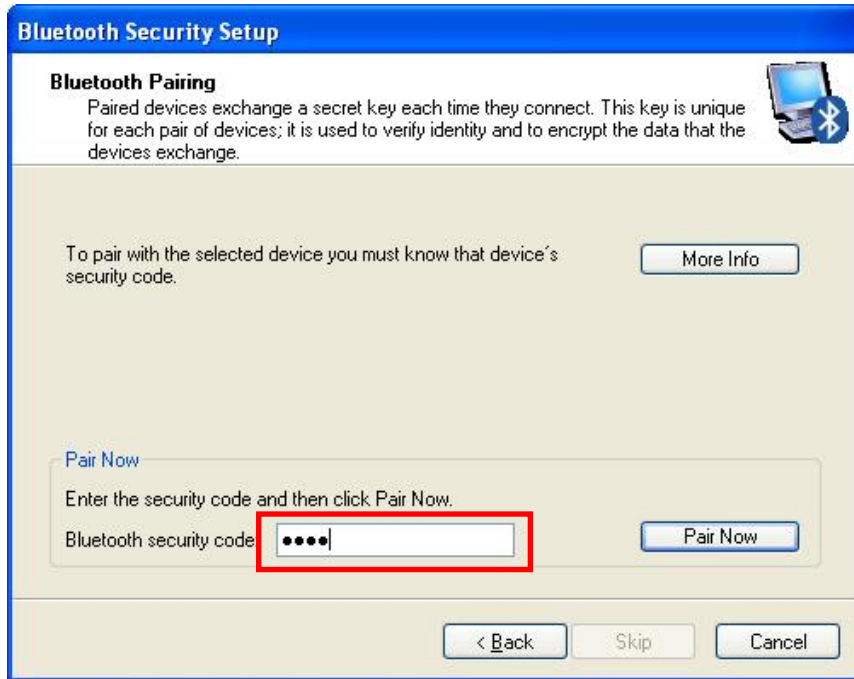
6) Select "Show all devices" and Click "Next".



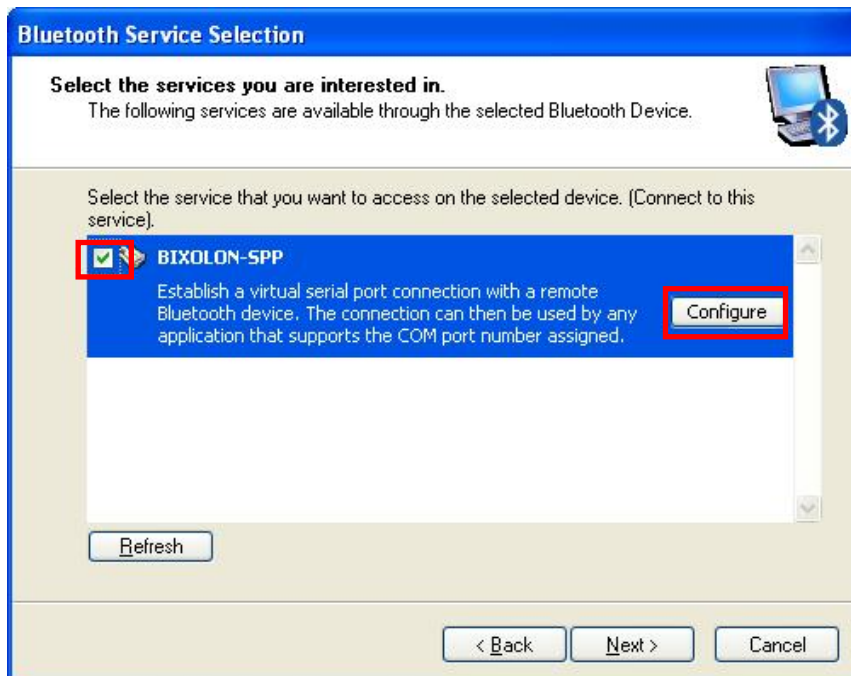
7) The program initiates a search for Bluetooth devices in the proximity.



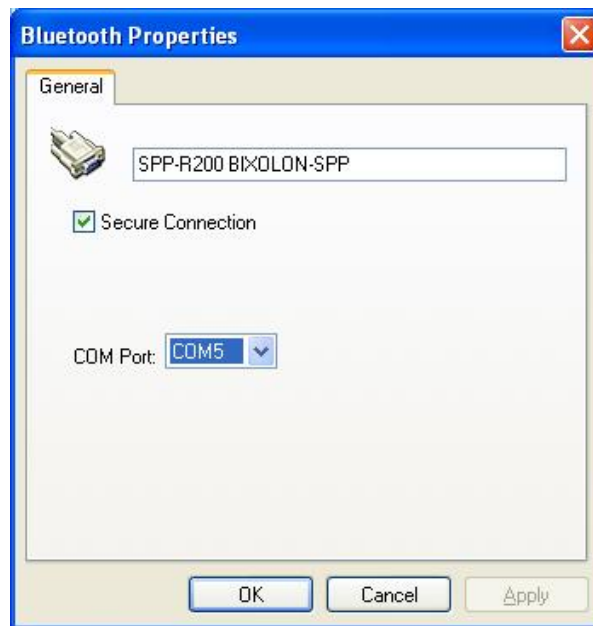
- 8) Enter the PIN Code in the Bluetooth Passkey window.
(Default Passkey: 0000)



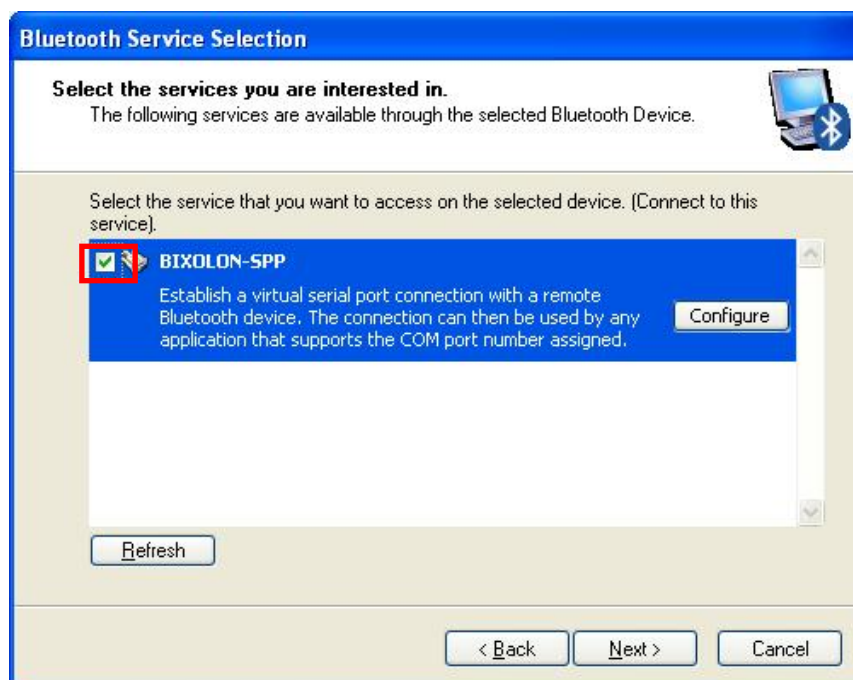
- 9) If the Passkey(PIN Code) is correct and pairing is completed, a green check symbol appears next to the BIXOLON_SPP icon. Click "Configure"



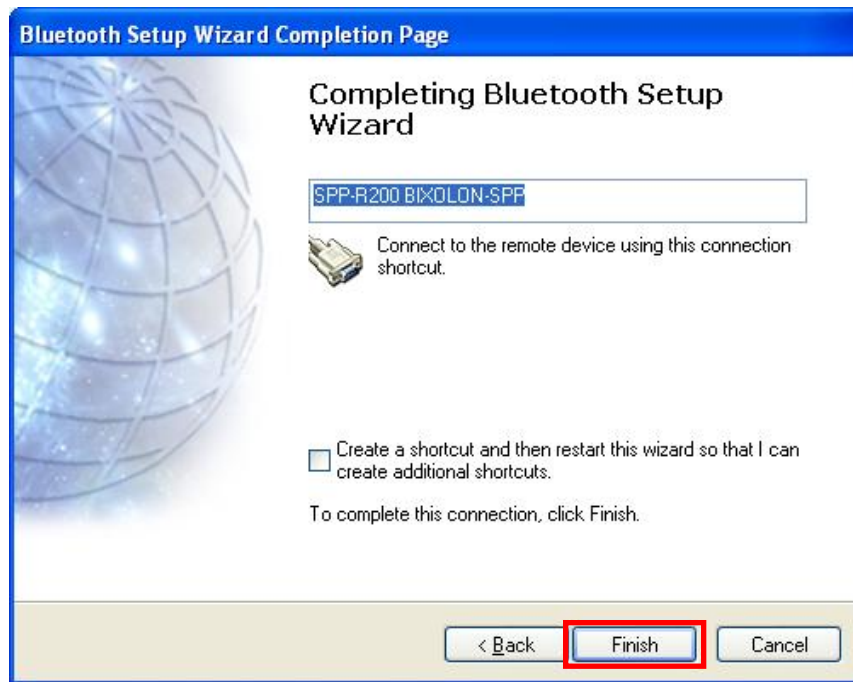
11) Check COM Port



12) Click "Next"



13) Click "Finish".



14) The shortcut changes to show a green indicator as shown below. The connection is complete when the BT LED of the SPP-R300 turns on.

