



Unified POS Utility Manual Thermal Printers

Rev. 1.11

BGT-100P Printer

BGT-102P Printer

SRP-S300

SRP-380

SRP-382

SRP-F310II

SRP-F312II

SRP-F313II

SRP-350plusIII

SRP-352plusIII

SRP-350III

SRP-352III

SRP-350IIIOBE

SRP-330

SRP-330II

SRP-332II

SRP-340II

SRP-342II

STP-103III

SPP-100II

■ Table of Contents

1. Foreword	3
2. Operating System (OS) Environment.....	3
3. Usage Preparation	4
4. Unified POS Utility Usage	5
4-1 VMSM.....	5
4-1-1 Getting the Memory Switch Status of the Printer.....	5
4-1-2 Setting the memory switch status of the Printer	6
4-1-3 Paper Save Mode	9
4-1-4 Serial communication Setting.....	9
4-1-5 Bluetooth configuration.....	10
4-1-6 Maintenance counter.....	11
4-2 NV Image Tool.....	12
4-2-1 NV Function Option.....	12
4-2-2 Image List Management.....	13
4-2-3 Correction image.....	13
4-2-4 Download the image	14
4-2-5 Print the image	15
4-3 Using the Command Test Editor.....	16

1. Foreword

The Unified POS Utility can be used for various purposes.

Details on the usage of each function are described as follows.

1) VMSM(Virtual Memory Switch Manager)

This function is used to set the virtual memory switch used for the thermal printer suitable for the user's environment.

2) NV Image Tool(Non-Volatile Image Tool)

This function helps you to download user-defined images to the flash memory in the printer and to recall and print those images with fast speed.

3) Command Test Editor

This function is used to test printing-related commands and create a brief label sample for test printing.

We at BIXOLON maintain ongoing efforts to enhance and upgrade the functions and quality of all our products. In following, product specifications and/or user manual content may be changed without prior notice.

2. Operating System (OS) Environment

The following operating systems(OS) are supported for usage.

- Microsoft Windows XP SP3 (32bit, 64bit)
- Microsoft Windows Server 2003 SP1 (32bit)
- Microsoft Windows Server 2003 (64bit)
- Microsoft Windows VISTA (32bit, 64bit)
- Microsoft Windows Server 2008 (32bit, 64bit)
- Microsoft Windows Server 2008 R2 (64bit)
- Microsoft Windows 7 (32bit, 64bit)
- Microsoft Windows 8 (32bit, 64bit)
- Microsoft Windows Server 2012 (64bit)
- Microsoft Windows 10 (32bit, 64bit)

3. Usage Preparation

1) Printer and PC Connection.

Connect the printer and PC via the interface cable.

(The interfaces available for usage are Serial, Parallel, USB and Ethernet.)

2) Unified POS Utility Program Execution.

The program can be installed from the accompanying CD, and Latest file versions can be downloaded from the BIXOLON website. (<http://www.bixolon.com>)

3) Select the interface type and communication conditions.

4) Click on the “Connect” Button. If the connection is successful, the inactive buttons become active with the message “The printer is connected”.

If the connection fails, the following error message appears. “Cannot open port”.

The screenshot displays the 'Unified POS Utility' software interface. It features a dark red header with the title 'Unified POS Utility'. Below the header, there are two main sections: 'Interface Type' and 'Communication Setting'. The 'Interface Type' section includes radio buttons for SERIAL (selected), PARALLEL, USB, LAN, WLAN, and BLUETOOTH. The 'Communication Setting' section contains several dropdown menus for Port (COM1), Baud Rate (115200), Data Bits (8), Parity (None), Stop Bits (1), and Flow Control (None). Below these are input fields for IP (192 . 168 . 100 . 189) and Port (9100). At the bottom of the settings section are 'Connect' and 'Disconnect' buttons. To the right of the settings, there are three stacked buttons: 'VMSM (Virtual Memory Setting Manager)', 'NV Image Tool (Non-Volatile Image Tool)', and 'Command Test Editor'. Below these is a 'Select Language' dropdown menu set to 'English', and an 'Exit' button. At the bottom right of the window, the copyright notice reads: 'Copyright (C) BIXOLON Co., Ltd. All rights reserved.'

4. Unified POS Utility Usage

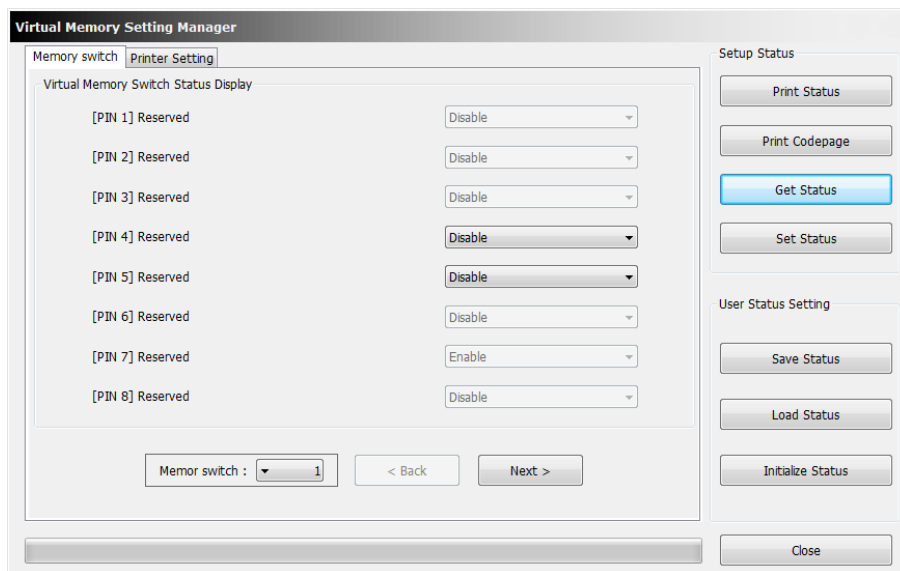
4-1 VMSM

This function is used to set the virtual memory switch used for the thermal printer suitable for the user's environment.

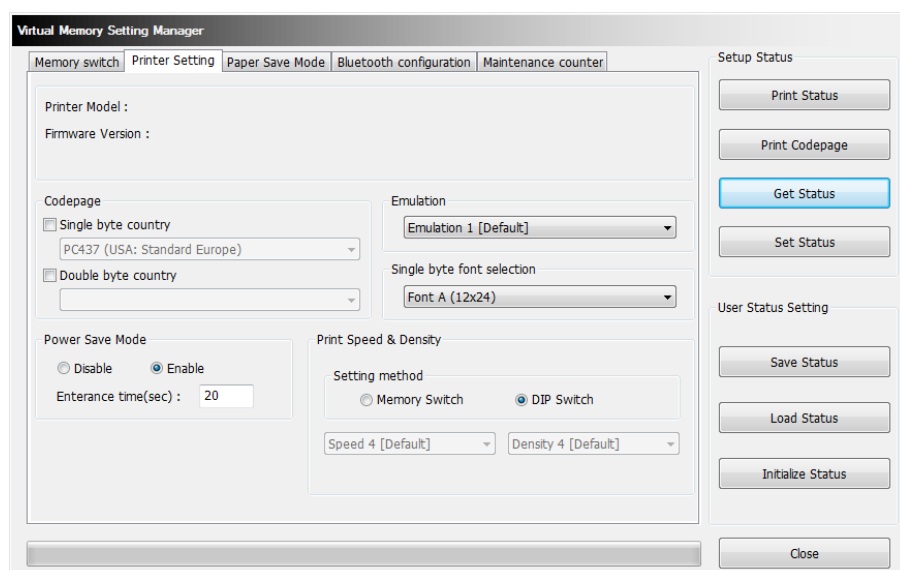
If the Communication Setting is OK, click the "VMSM" button.

4-1-1 Getting the Memory Switch Status of the Printer

- 1) Click the "Get Status" button. It gets the status of the Printer Setting.
- 2) The "Memory switch" Tab in the Printer Status window displays the current virtual memory switch settings of the printer, and allows new settings to be defined.

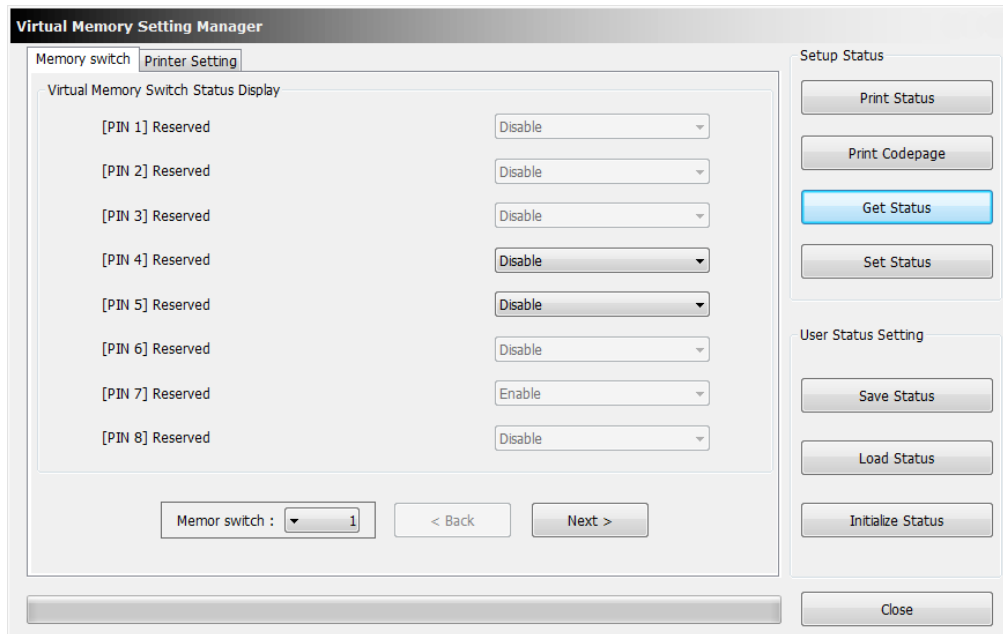


- 3) The "Printer Setting" Tab displays printer information, and code page information, and allows new settings to be defined.



4-1-2 Setting the memory switch status of the Printer

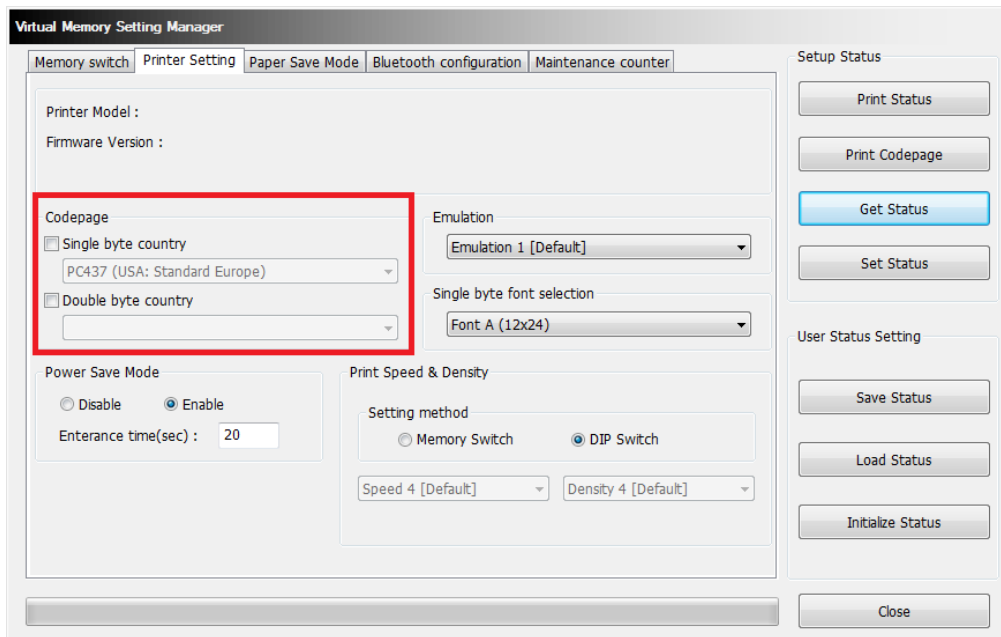
After getting the memory switch status of the printer, the status of the printer can be modified.



- 1) "Get Status"
Pressing this button displays the current memory switch settings read from the printer.
- 2) "Set Status"
Pressing this button allows the user to designate switch settings of the printer.
- 3) "Save Status"
Pressing this button saves the current memory switch settings to file.
- 4) "Load Status"
Pressing this button loads and displays the previously-saved memory switch settings file.
- 5) "Initialize Status"
Pressing this button resets the memory switch settings.

6) Code page

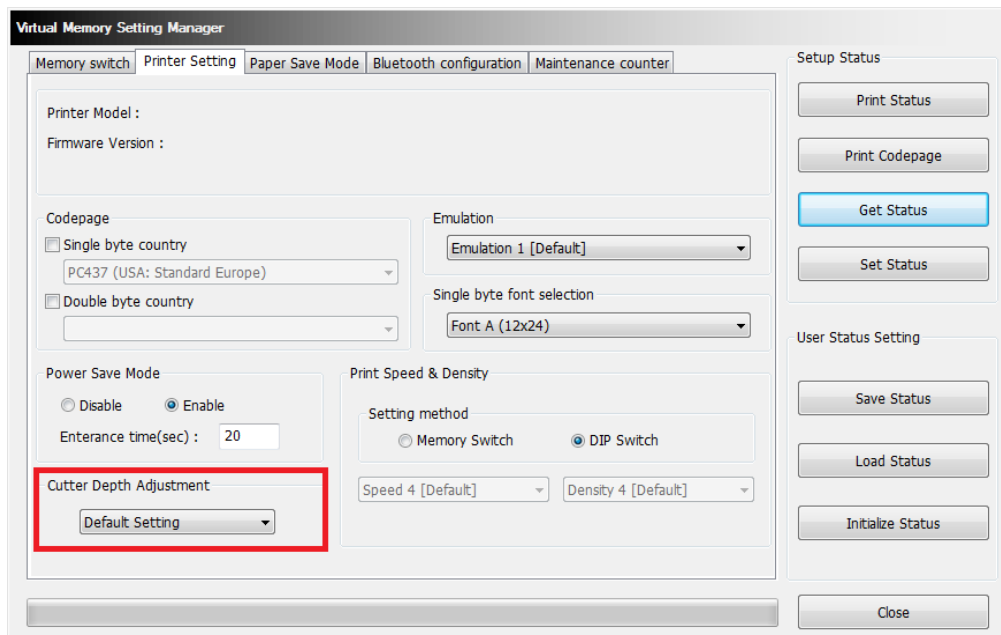
The user may select and set the code page.



7) Cutter Depth Adjustment

Supported Model : SRP-380/382, SRP-S300

You can set the paper width which is not cut when using a partial cut operation.



8) 90 Degree Rotation Mode

Supported Model : SRP-S300L(Liner-free Model)

Texts prints with 90 degree rotation. (eg: N to Z)

9) Back-Feeding Mode

Supported Model : SRP-S300L(Liner-free Model)

Reverse feeds the paper to the specific position before the start of printing.

10) Automatic feed in idle mode

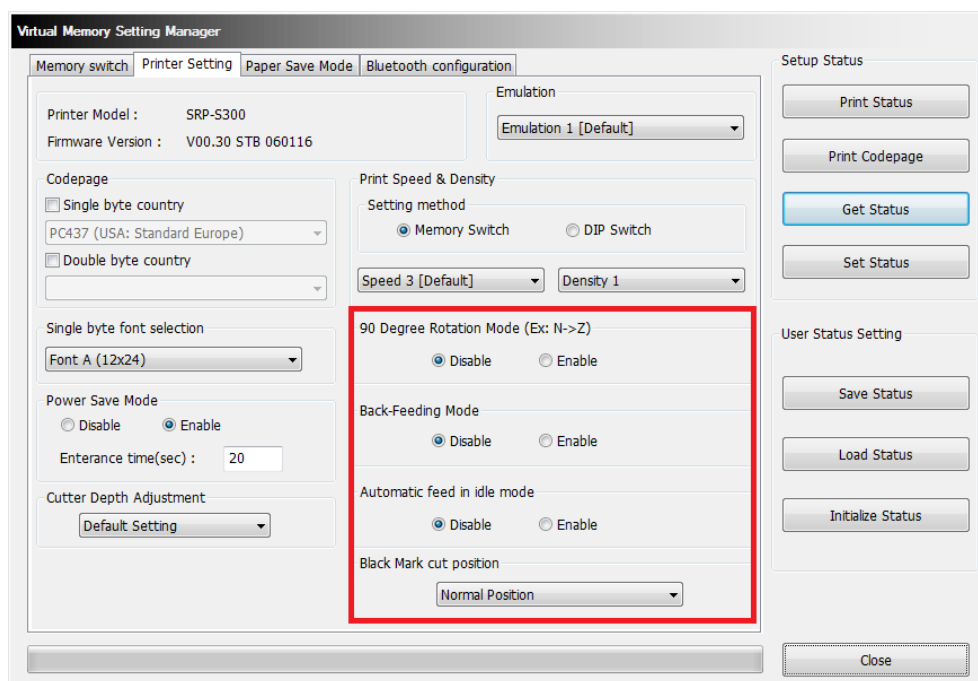
Supported Model : SRP-S300L(Liner-free Model)

Feeds the paper at every specified time interval when the printer is in the sleep mode.

11) Black Mark cut position

Supported Model : SRP-S300L(Liner-free Model)

Cut after feeding the paper to the default cutting position or black-mark position.

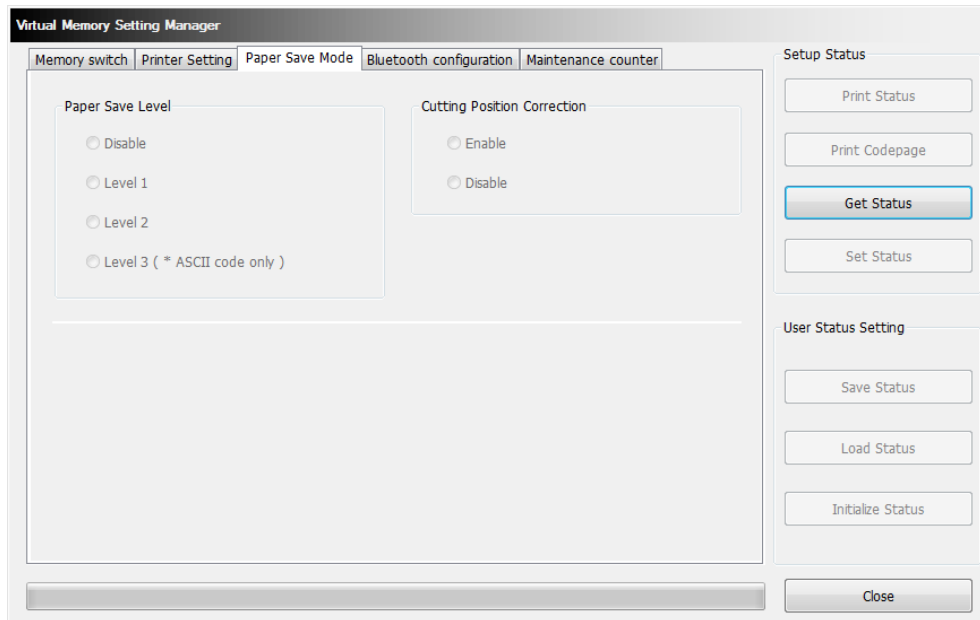


4-1-3 Paper Save Mode

Supported Model

- SRP-350III/352III, SRP-350plusIII/352plusIII, SRP-F310II/F312II/F313II, SRP-380/382, BGT-100P/102P, SRP-330II/332II, SRP-340II/342II, SRP-S300

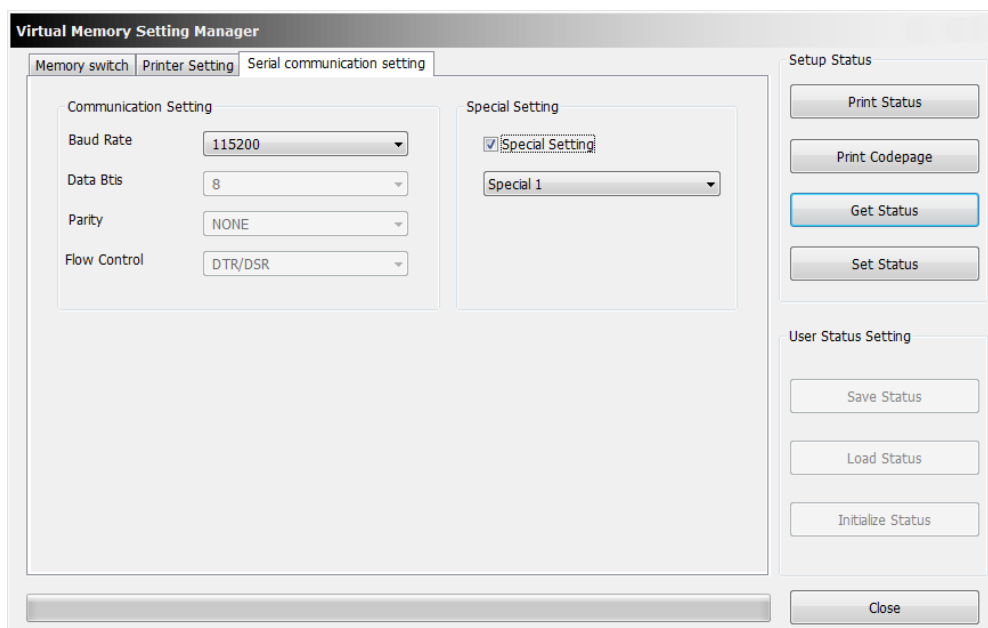
You can select the levels of “Paper Save” and the feature of “Cutting Position Correction” in the “Paper Save Mode” section (tab).



4-1-4 Serial communication Setting

Supported Model : SPP-100II

Serial Communication and Special Function setting can be enabled in Serial Communication Setting Tab.



4-1-5 Bluetooth configuration

Supported Model

- SRP-350IIIOBE, SRP-350plusIII/352plusIII, SRP-F310II/F312II/F313II, SRP-380/382, SRP-S300

Bluetooth setting can be changed by Bluetooth Configuration Tab.

In case of Serial(Bluetooth) communication, it is not able to check Bluetooth configuration.

The screenshot shows the 'Virtual Memory Setting Manager' interface with the 'Bluetooth configuration' tab selected. The interface is divided into several sections:

- Bluetooth configuration:** Contains fields for 'Operating mode' (set to 'iOS'), 'Authentication & Encryption' (radio buttons for 'Disable' and 'Enable', with 'Enable' selected), 'Connection mode' (dropdown menu set to 'Mode 2'), 'PIN Code' (text field with '0000'), and 'Device name' (text field with 'SRP-XXXXXX'). There are 'Get Status' and 'Set Status' buttons below these fields.
- MFi Information:** Displays 'Firmware version : Ver. 0.2.20', 'Hardware version : Ver. 1.1.0', 'Protocol string : com.bixolon.protocol', and 'Serial number : 0000000000000000'.
- Auto Reconnection:** Contains radio buttons for 'Disable' and 'Enable' (with 'Enable' selected), and numeric input fields for 'Re-Count : 60' and 'Interval : 5'.
- Setup Status:** A vertical column of buttons including 'Print Status', 'Print Codepage', 'Get Status', and 'Set Status'.
- User Status Setting:** A vertical column of buttons including 'Save Status', 'Load Status', and 'Initialize Status'.
- Close:** A large blue button at the bottom right.

■ Authentication & Encryption

Sets or cancels Authentication & Encryption mode when connecting via Bluetooth

* If Authentication & Encryption mode is disabled, connection to a device can be done without a PIN Code.

■ Connection Mode

Sets Mode1, Mode2, or Mode3 when connecting via Bluetooth.

- Mode1: connection possible only with the first device with which connection succeeds
- Mode2: connection with all Bluetooth enabled devices possible via use of a PIN Code
- Mode3: connection possible only with the first device with which connection succeeds and searching or use of connected device possible

■ PIN Code

Changes the PIN Code required for Bluetooth connections.

(maximum 12 characters long)

■ Device Name

Changes the device name produced when establishing a Bluetooth connection.

(maximum 12 characters long)

■ MFi Information

In case of iOS mode, MFi information will be displayed.

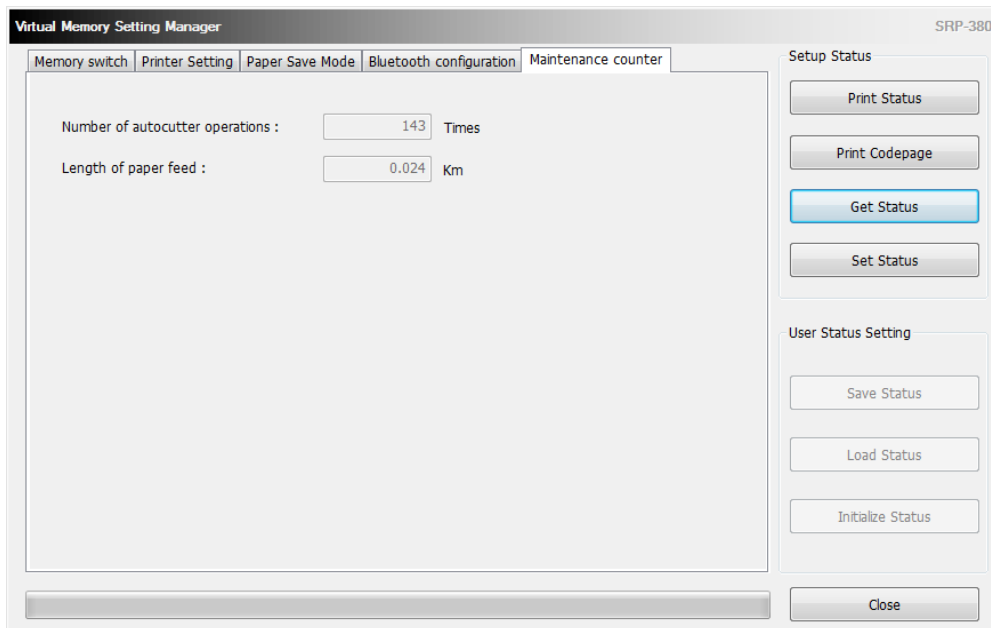
■ Auto Reconnection

Retry setting on Bluetooth can be enabled when Bluetooth connection is released.

4-1-6 Maintenance counter

Supported Model : SRP-F310II/F312II/F313II, SRP-380/382

You can check the number of auto cut operation and amount of paper feed which have been performed by the printer.



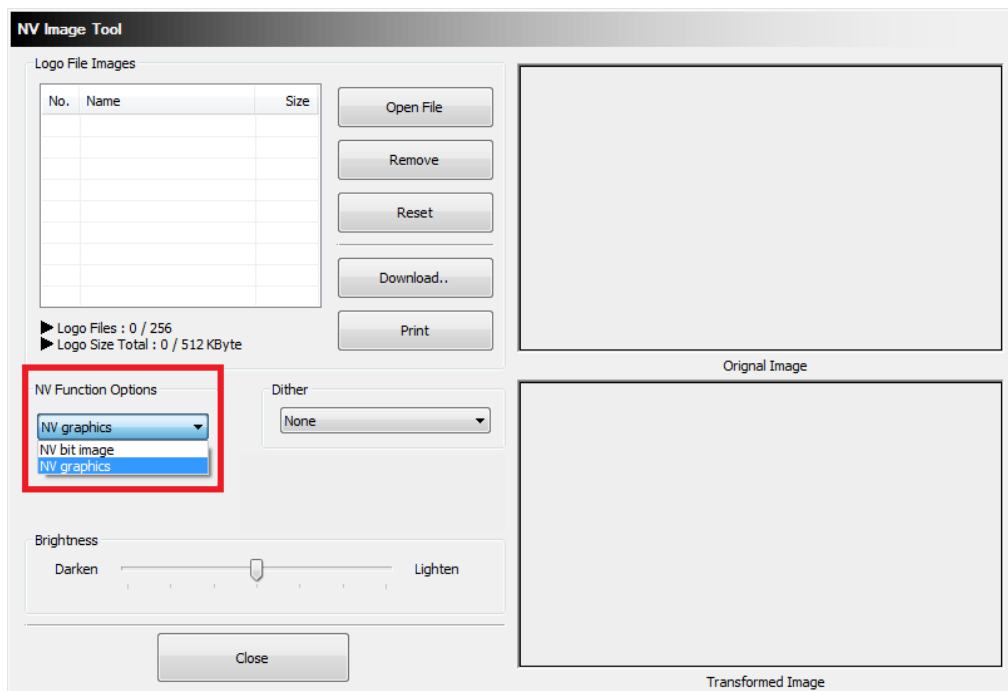
4-2 NV Image Tool

This function helps you to download user-defined images to the flash memory in the printer and to recall and print those images with fast speed.

If the Communication Setting is OK, click the “NV Image Tool” button.

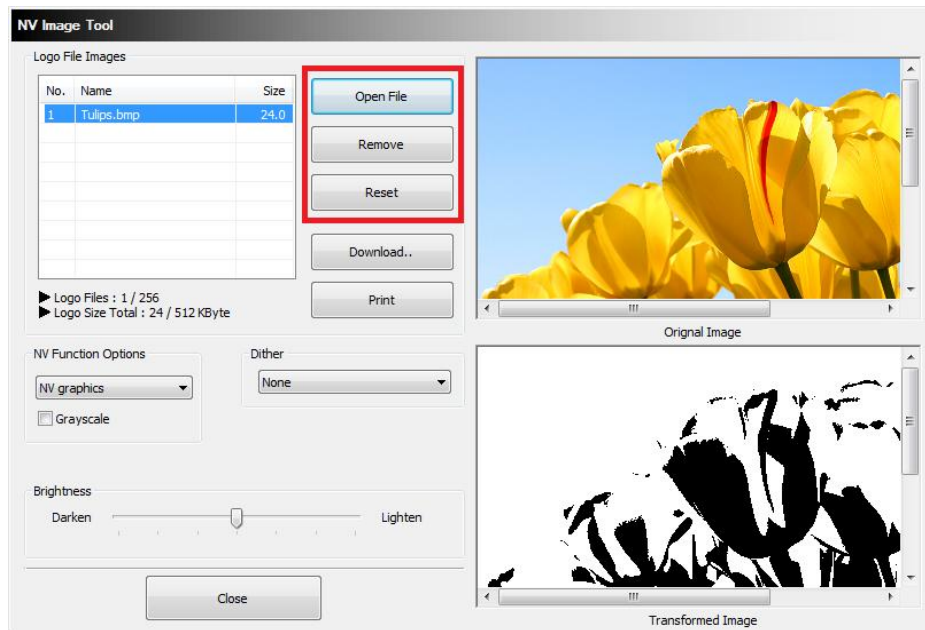
4-2-1 NV Function Option

If the Printer is supported two-color mode, mono (NV bit image) or two-color (NV graphics) mode can be selected.



4-2-2 Image List Management

The images can be opened, added, deleted in the Image list box using three buttons in Bitmap selection. Only **bmp** type of image is available to download.



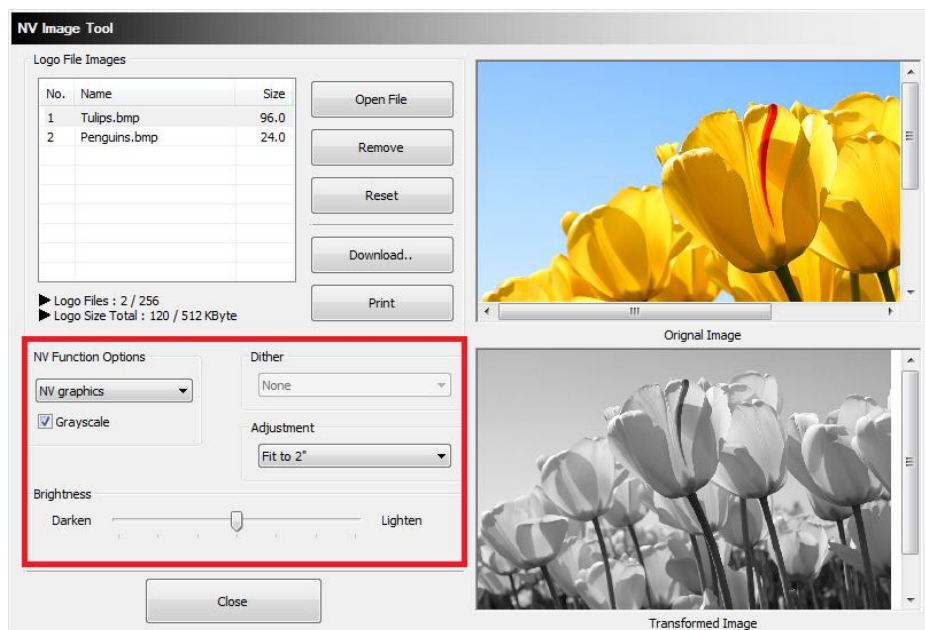
4-2-3 Correction image

You can get the correction image by selecting a 'Dither', 'Brightness', 'Grayscale' and 'Adjustment' option.

Supported model by 'Adjustment' : SRP-380/382, SRP-S300

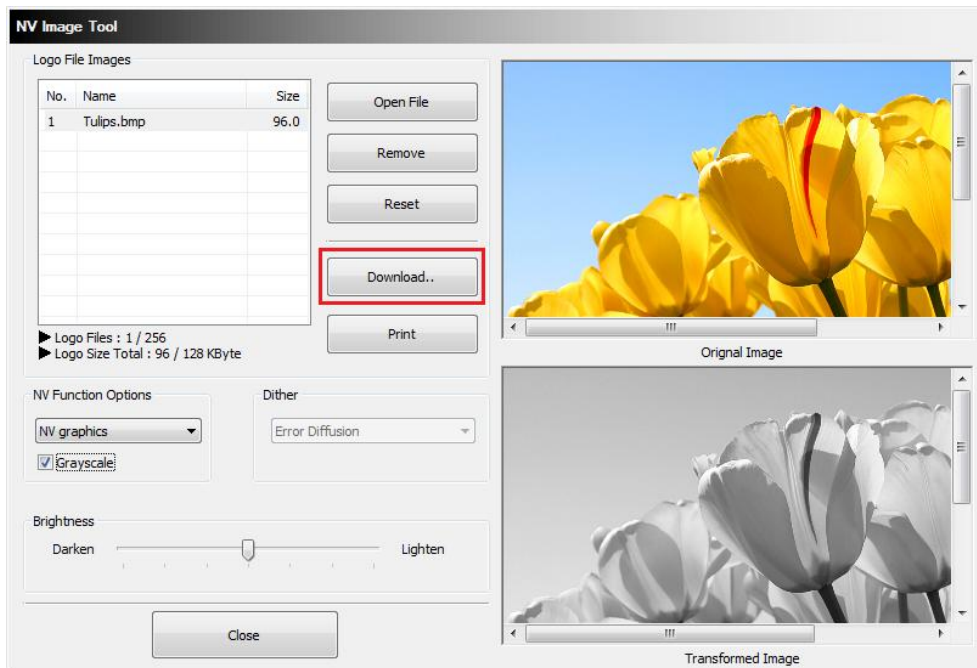
Supported model by 'Grayscale'

- SRP-350plusIII/352plusIII, SRP-F310II/F312II/F313II, SRP-380/382, BGT-100P/102P, SRP-330II/332II, SRP-S300

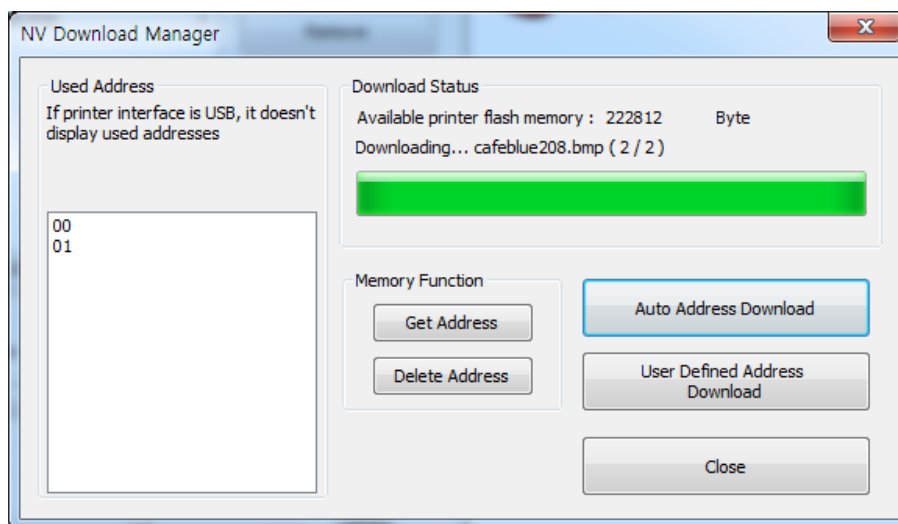


4-2-4 Download the image

- 1) When the “Download” button is clicked, pop-up window and the steps are different based on printer model.

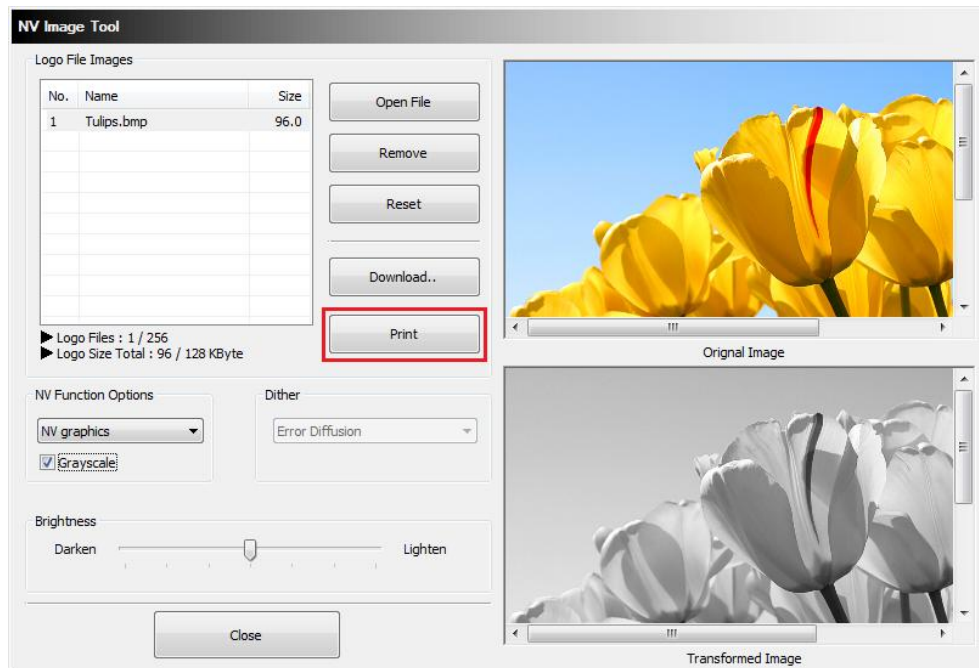


- 2) After all images stored on the corresponding printer are deleted, the image matching the selected resolution level is downloaded. The image is assigned a number according to the image list displayed on the screen.

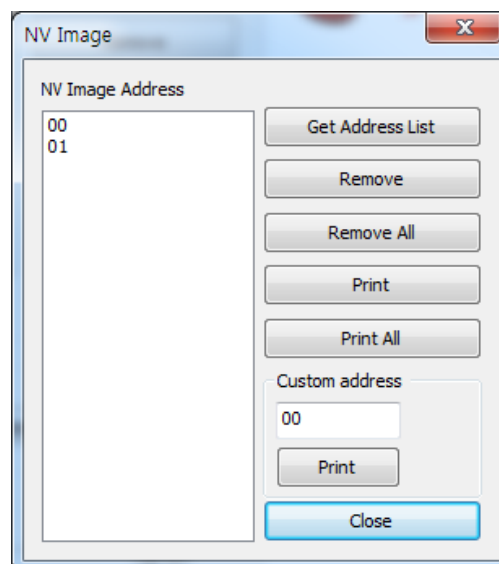


4-2-5 Print the image

- 1) The “Print” button in the main screen can be used on each printer model to print and test a stored image.



- 2) After selecting the image to print following the recall of the addresses of all currently stored images, press the “Print” button to print.



4-3 Using the Command Test Editor

- 1) If the Communication Setting is OK, click the “Command Test Editor” button.
- 2) If the “Command Test Editor” button is pressed, the following dialog box will appear. Using this Dialog, the user can write and edit the command and send to the printer. Each button of “Printing Option” and “Etc” group can insert commands to edit box. Also “Write Command” button can transfer these commands to the printer. To verify the result of sending the command can use the “Print Test String” button.

