

P070UG-VCPD

Installation Guide and User Manual



Innovative VCPD

Content:

1. System requirement. ----- 3

2. Install Display Link driver for P070UG----- 3

3. Install Adobe Flash Player ----- 5

4. Install Adobe Shockwave Player ----- 8

5. Install VCPD driver ----- 11

6. Change Windows User Account Control settings (UAC) ----- 17

7. Confirm all components ----- 19

8. Set VCPD manager ----- 22

9. Set POS configuration and start to use ----- 29

10. FAQ ----- 31

1. System Requirement.

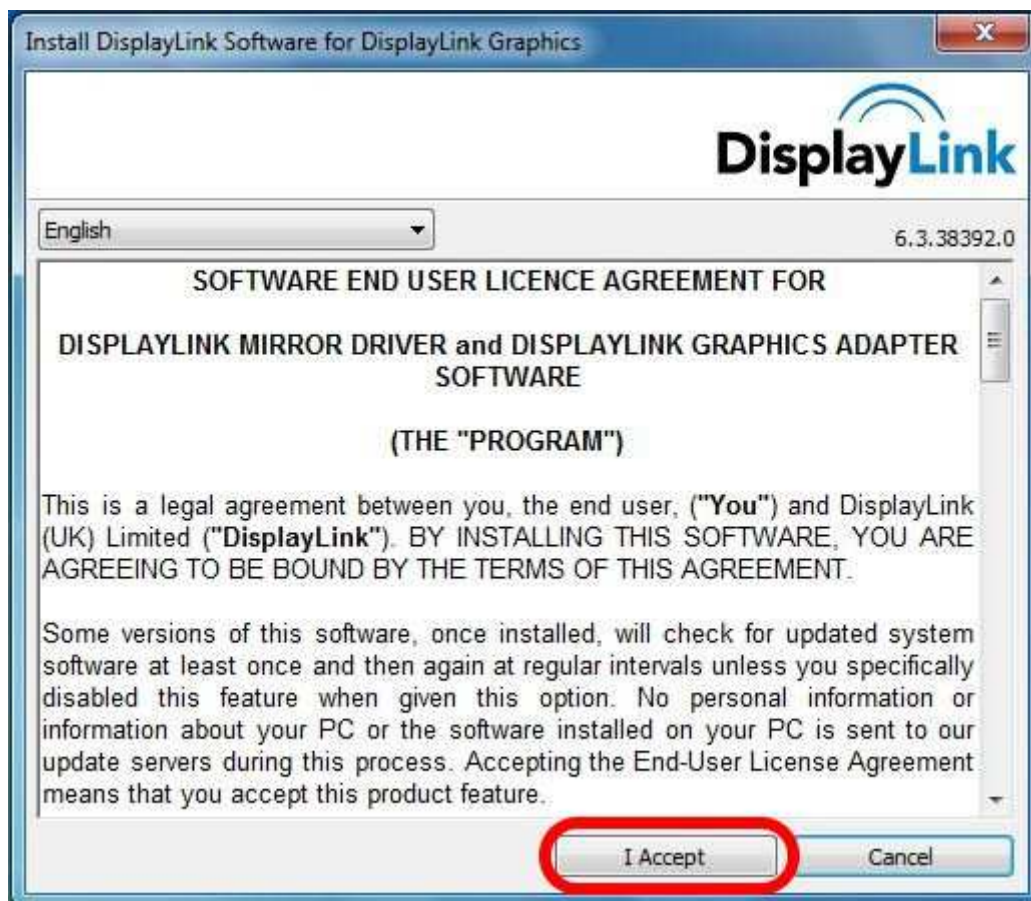
- A. Phistek USB Monitor P070UG-VCPD
- B. Computer System with OS: Microsoft Windows XP/7/Vista/8
- C. Software: Adobe Flash Player, Adobe Shockwave Player, VCPD
- D. USB video Driver: DisplayLink **Driver**

2. Install DisplayLink driver for P070UG.

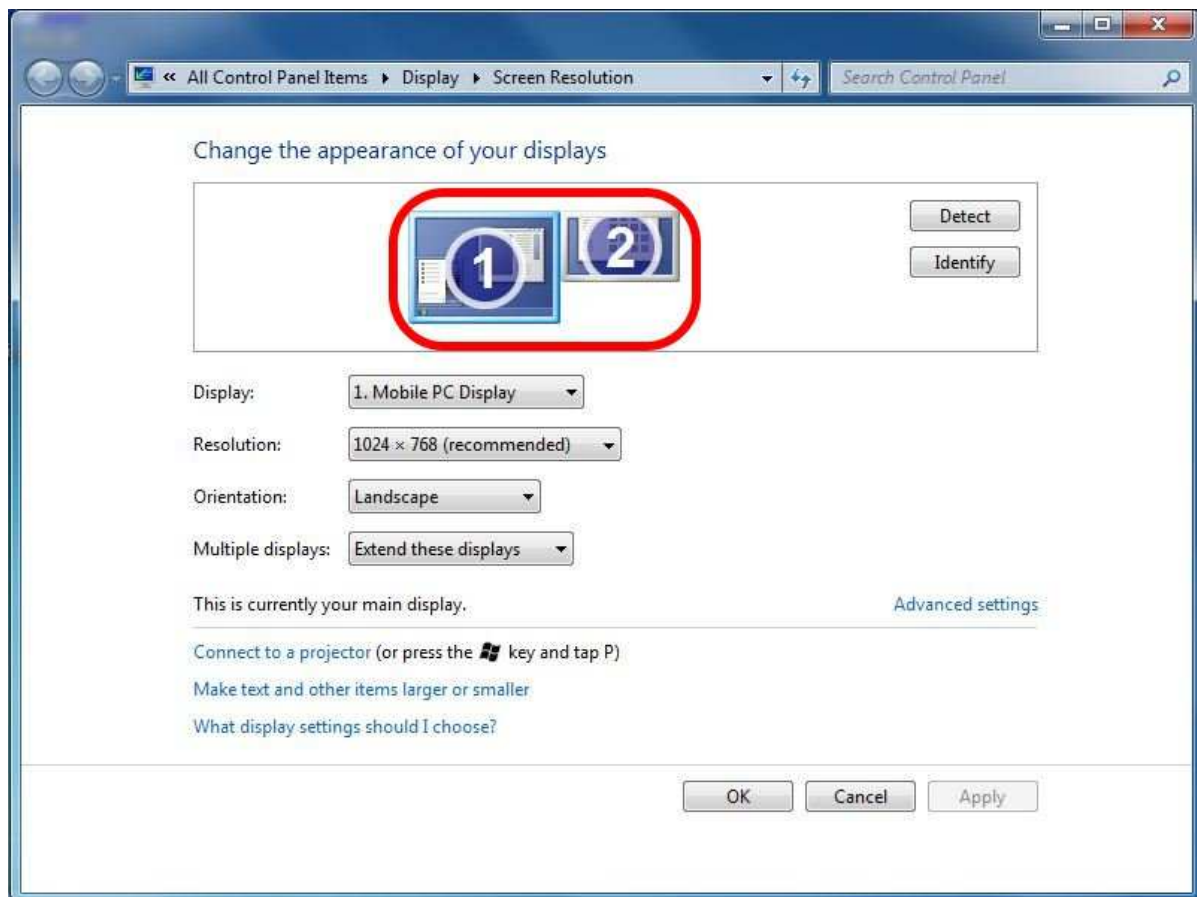
- A. Double click DisplayLink6.3M0.exe to install Display Link Driver for P070UG.



- B. Click the button accept Display Link software license.



C. After driver install finish the “Screen Resolution” setting will show automatically.



D. Display Link Manager will minimize to system tray.

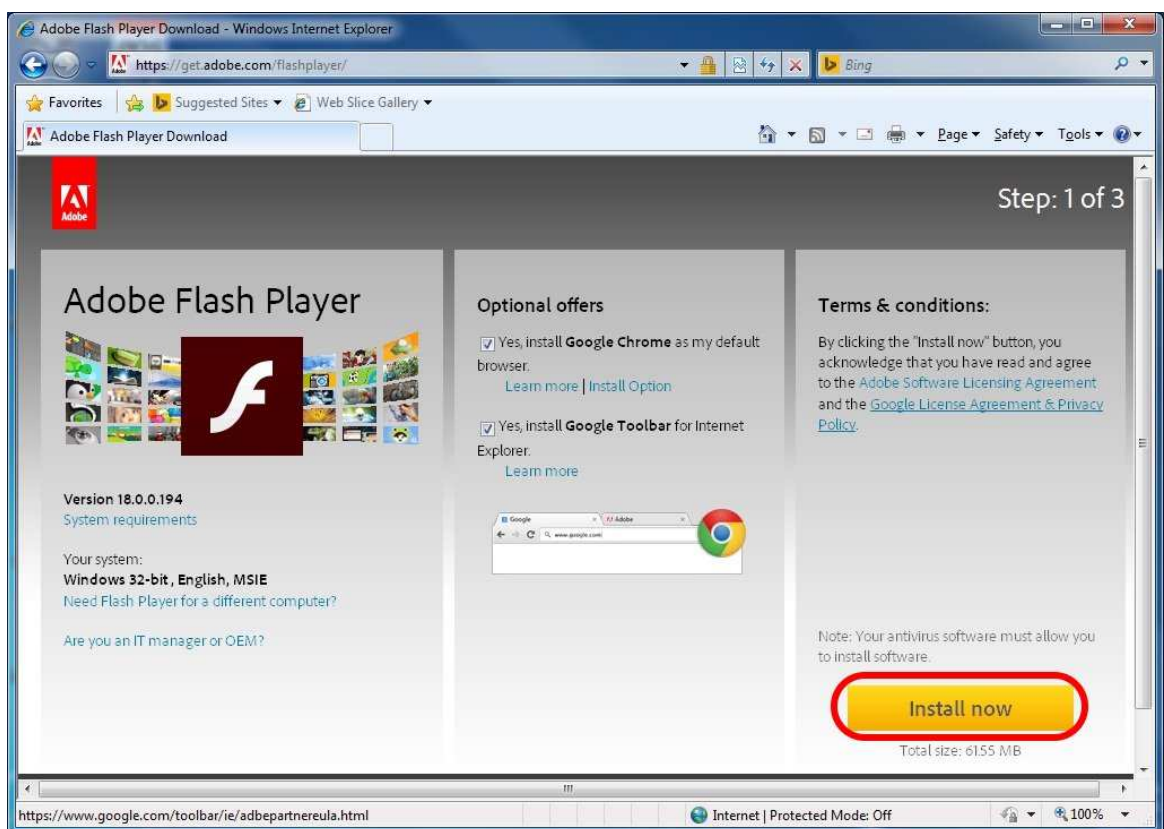


- E. P070UG installation finished.
P070UG will display extended desktop:



3. Install Adobe Flash Player.

- A. Open a browser and find Adobe web page <http://get.adobe.com/flashplayer> to download “Adobe Flash Player”.



- B. After Click "Install" will pop dialog, click "Run" button.



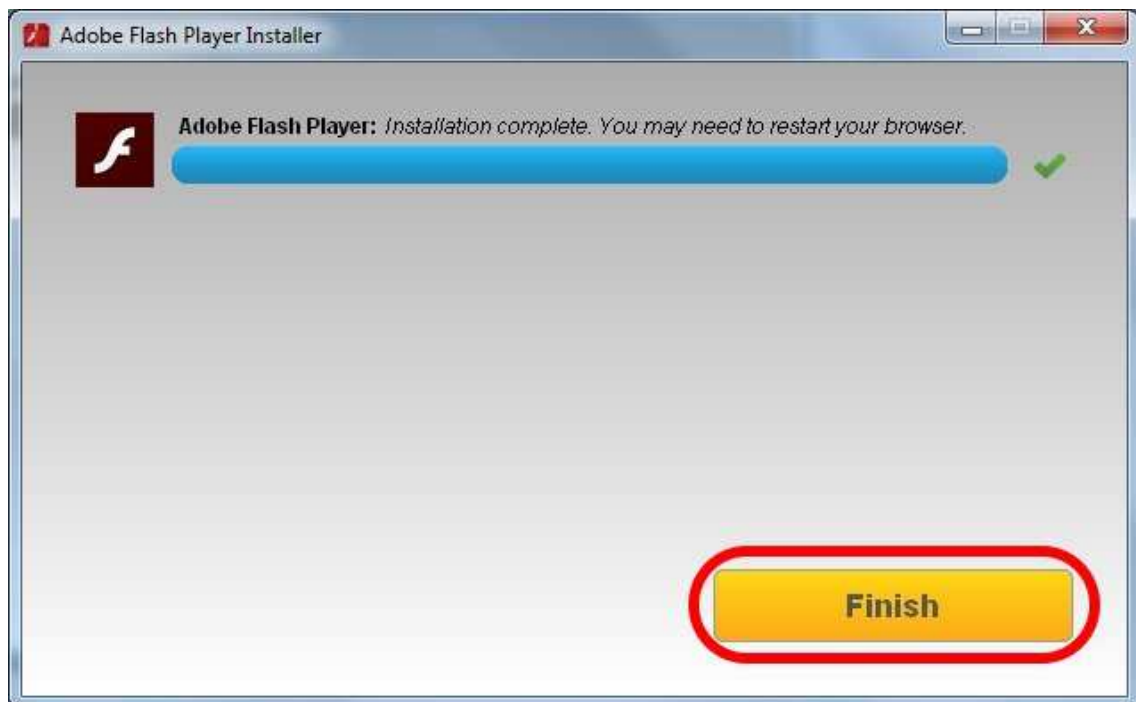
- C. Confirm and run installer.



- D. Select update option and click “Next”.

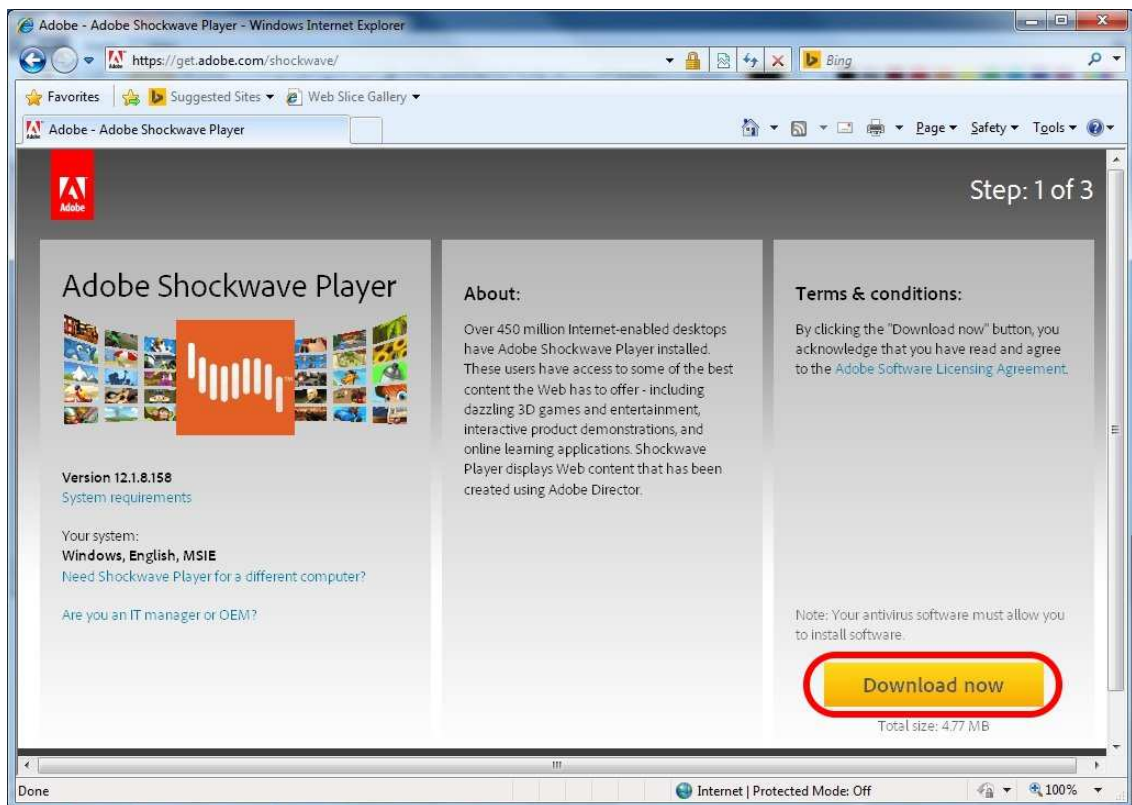


- E. Finish Adobe Flash Player Installer.



4. Install Adobe Shockwave Player.

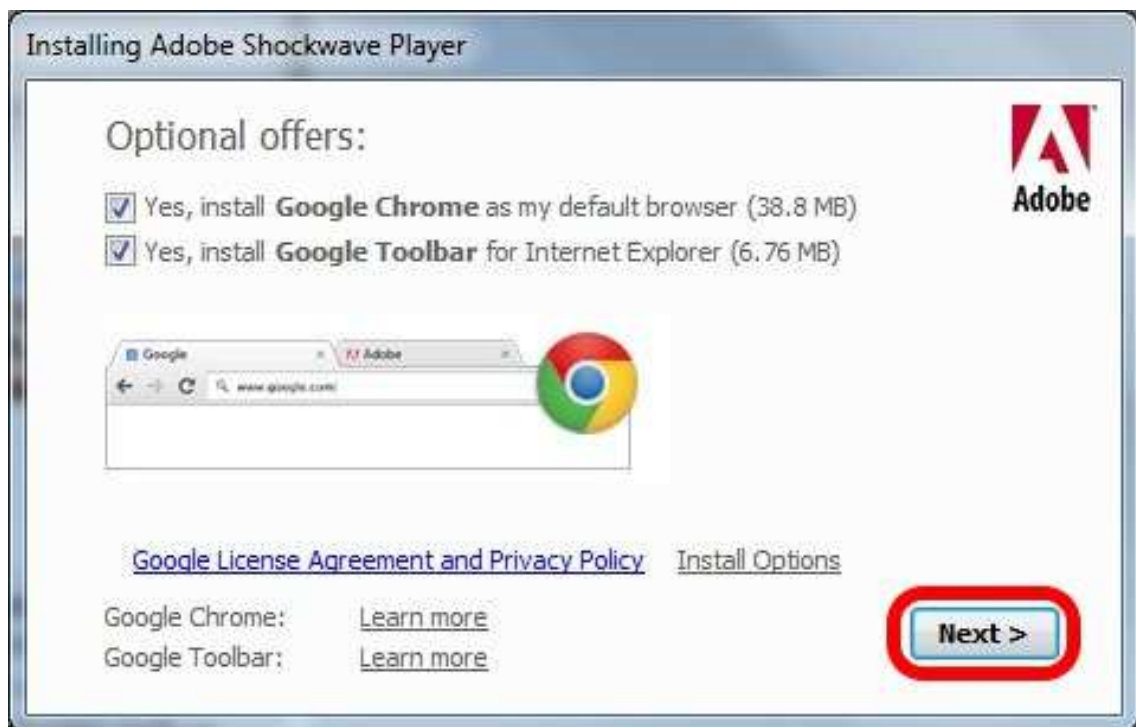
- A. Open a browser and find Adobe web page <http://get.adobe.com/shockwave> to download “Adobe Shockwave Player”



- B. Pop dialog, click “Run” button.



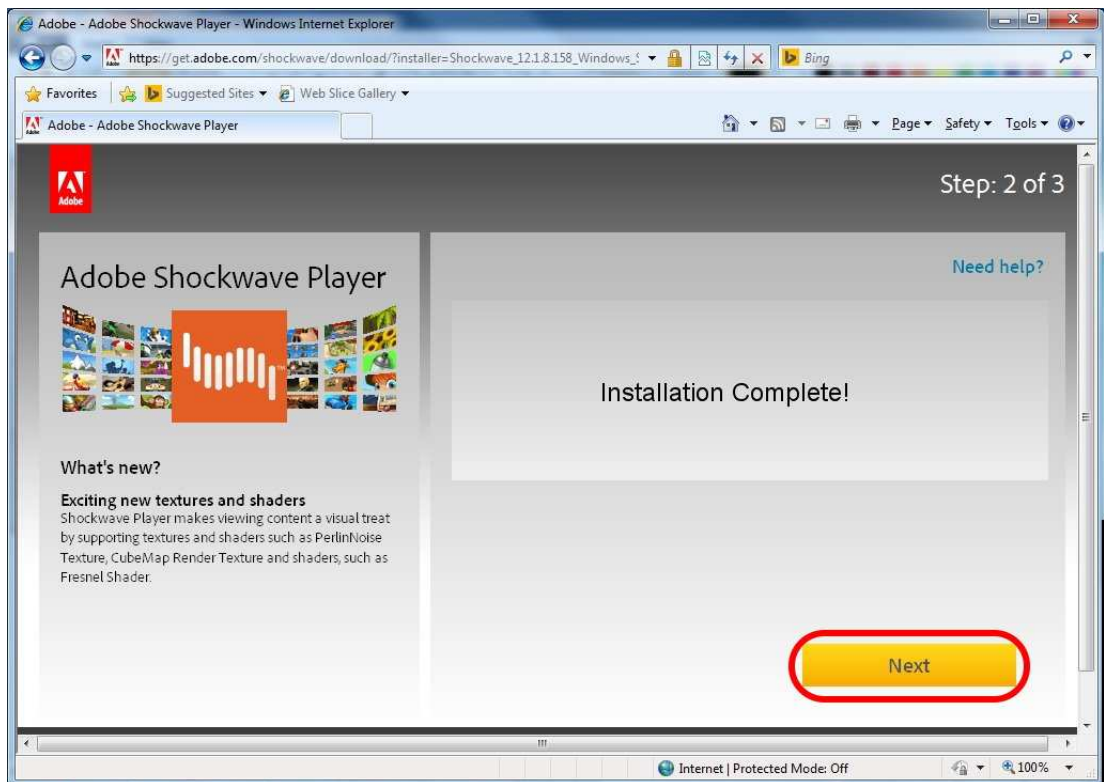
- C. Select the option and click “Next”.



- D. Select option to install Norton Security or not then click “Agree”.



E. Click “Next” to finish installation.



5. Install VCPD driver.

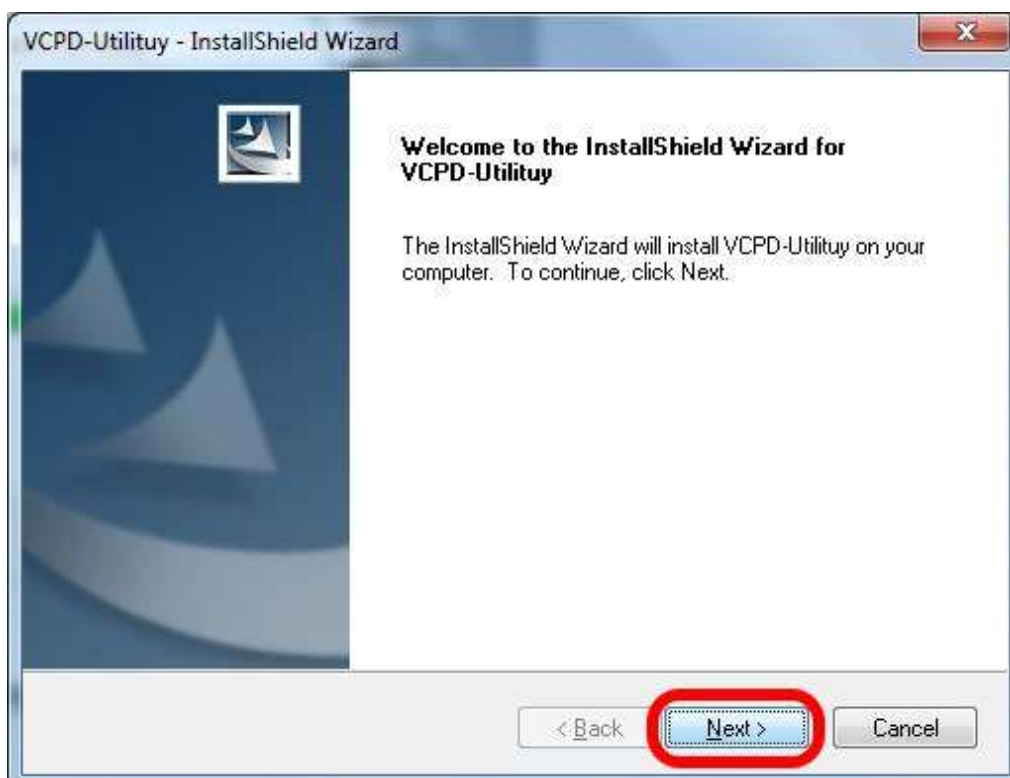
- A. Double click VCPD Setup v1.3.exe.



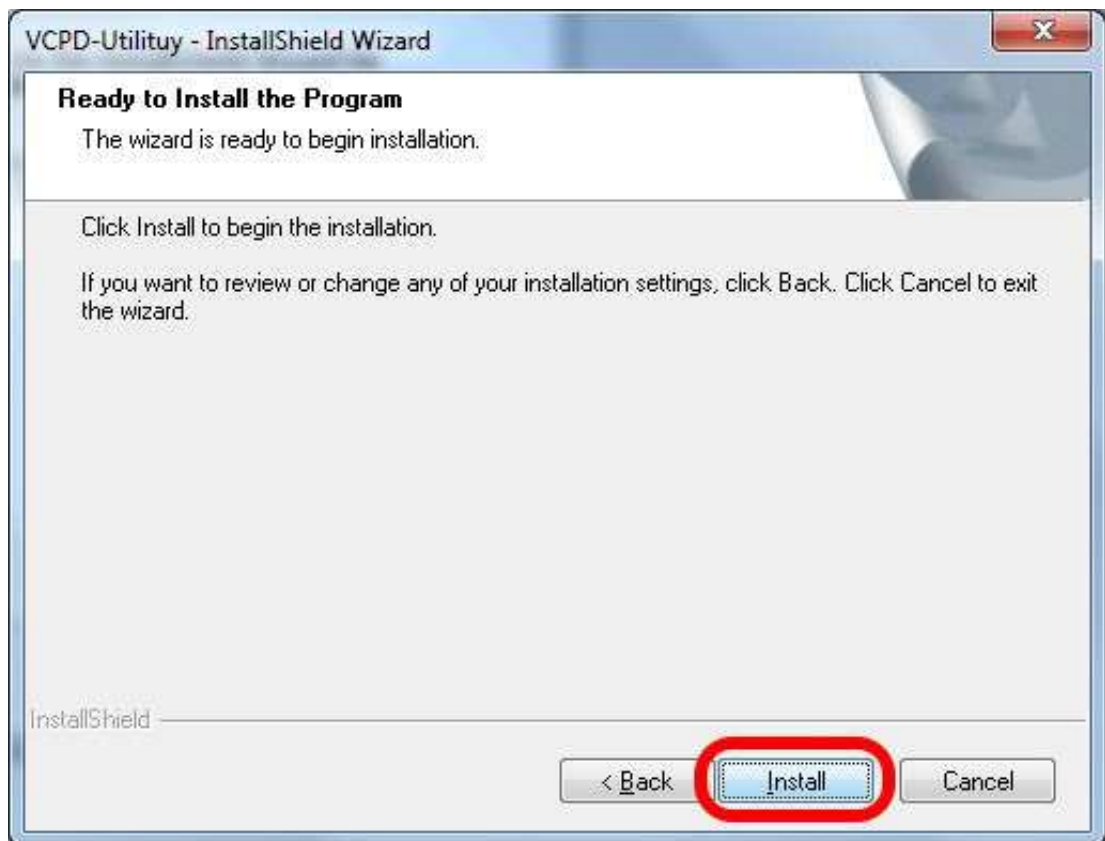
- B. Click "Run" to install VCPD.



- C. Click "Next" to continue.



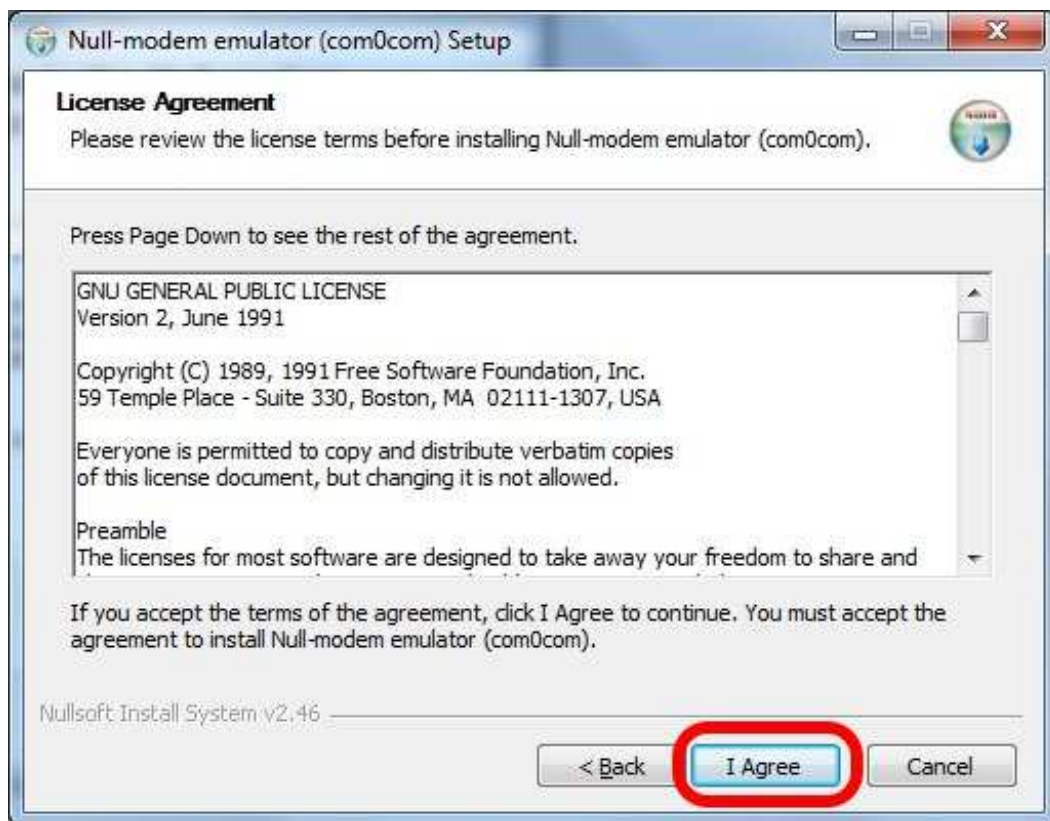
- D. Click "Install" button.



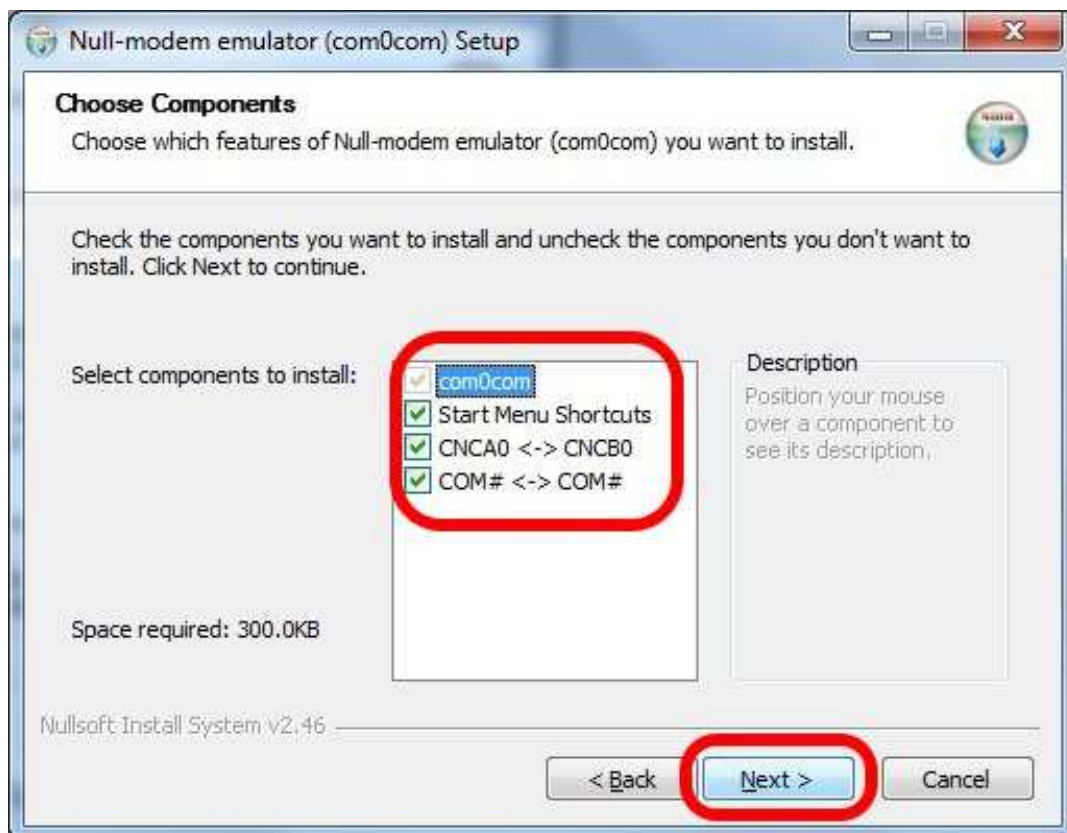
- E. Click "Next" to install com0com software.



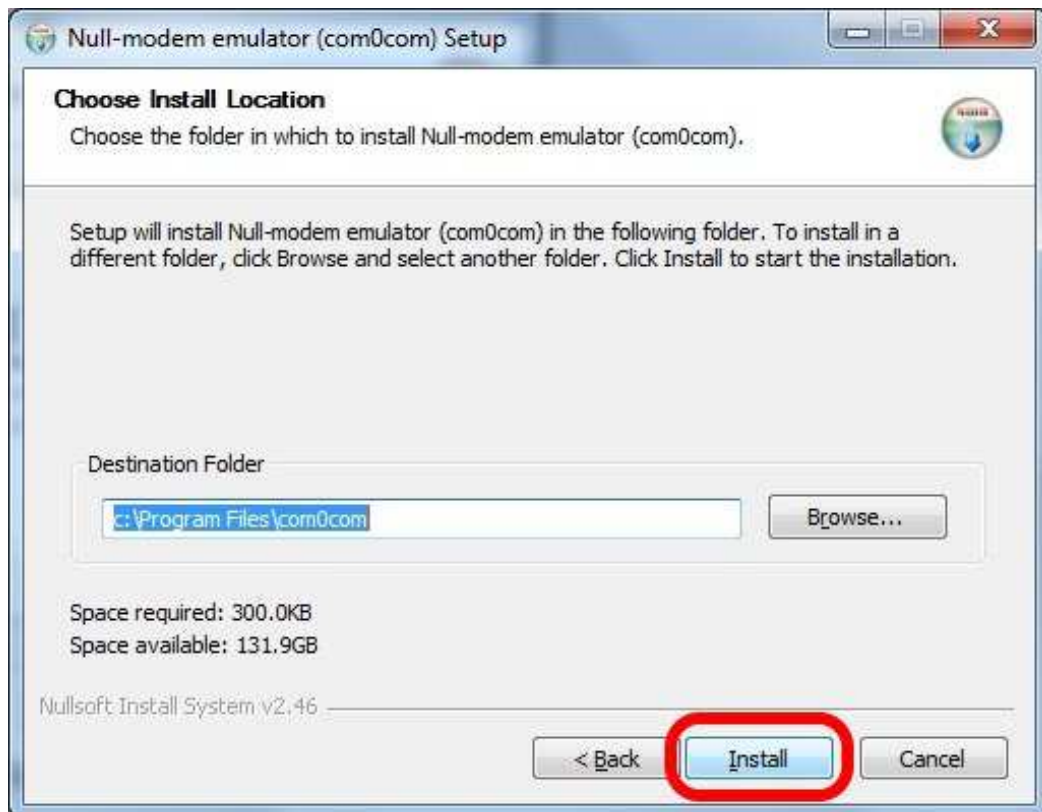
- F. Read License Agreement and Click “I Agree” to continue.



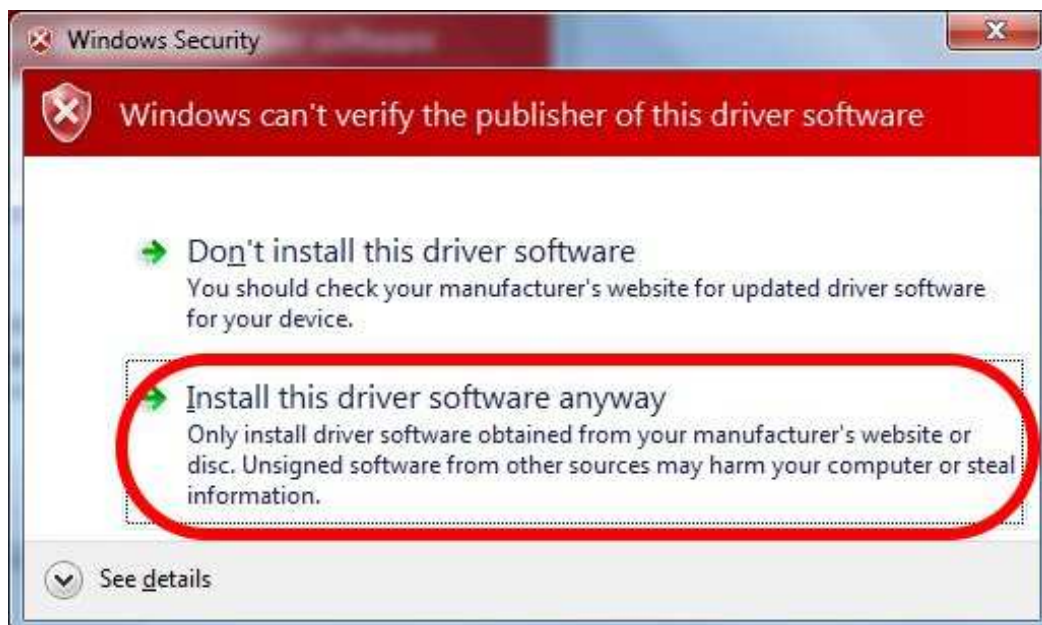
- G. Do not change option and click “Next” to continue.



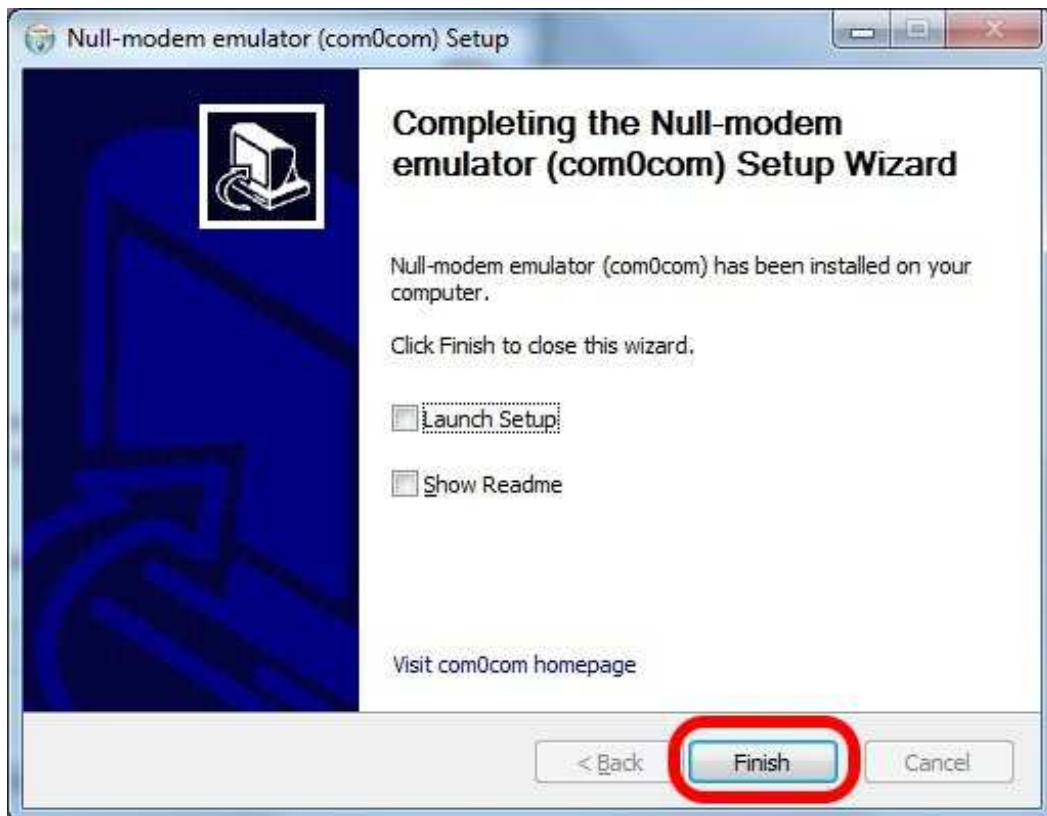
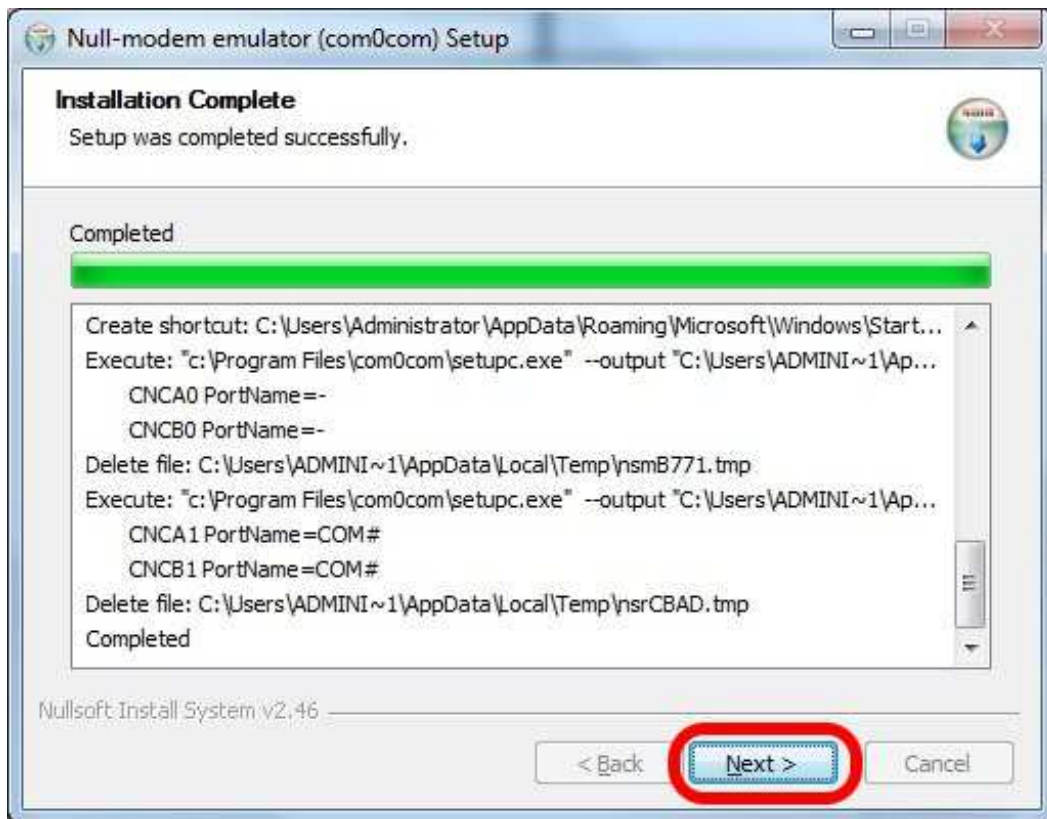
H. Click "Install" button.

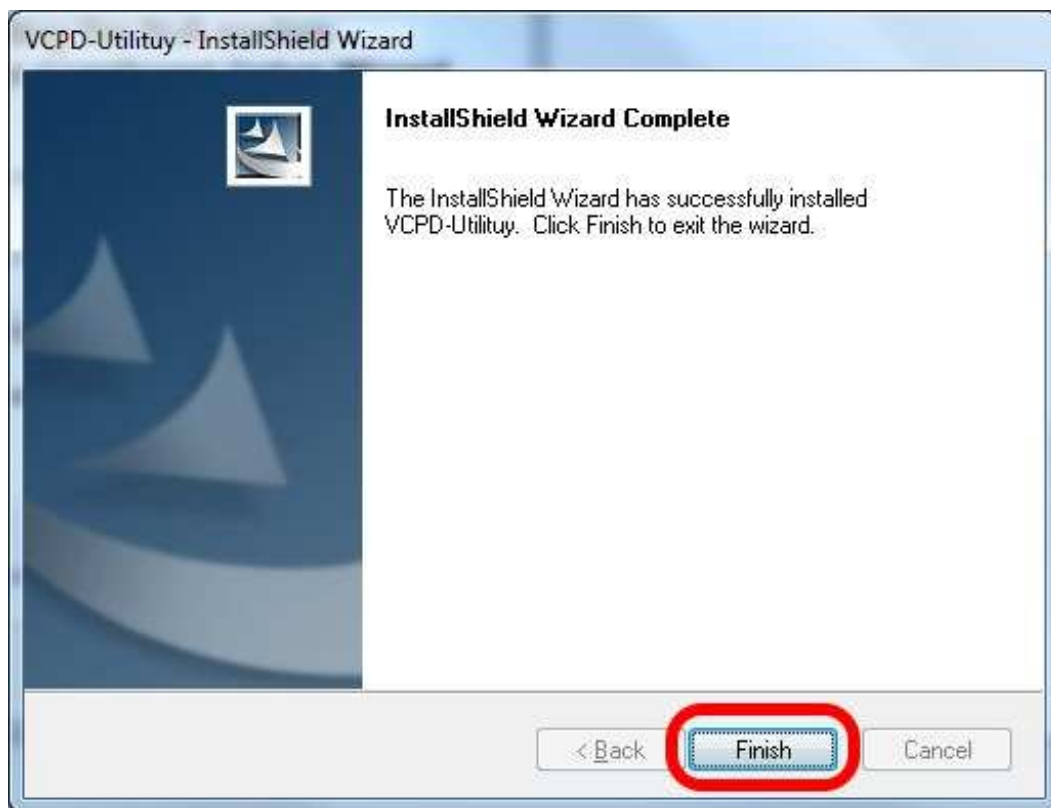


I. Ignore the warning and click the option as follow.



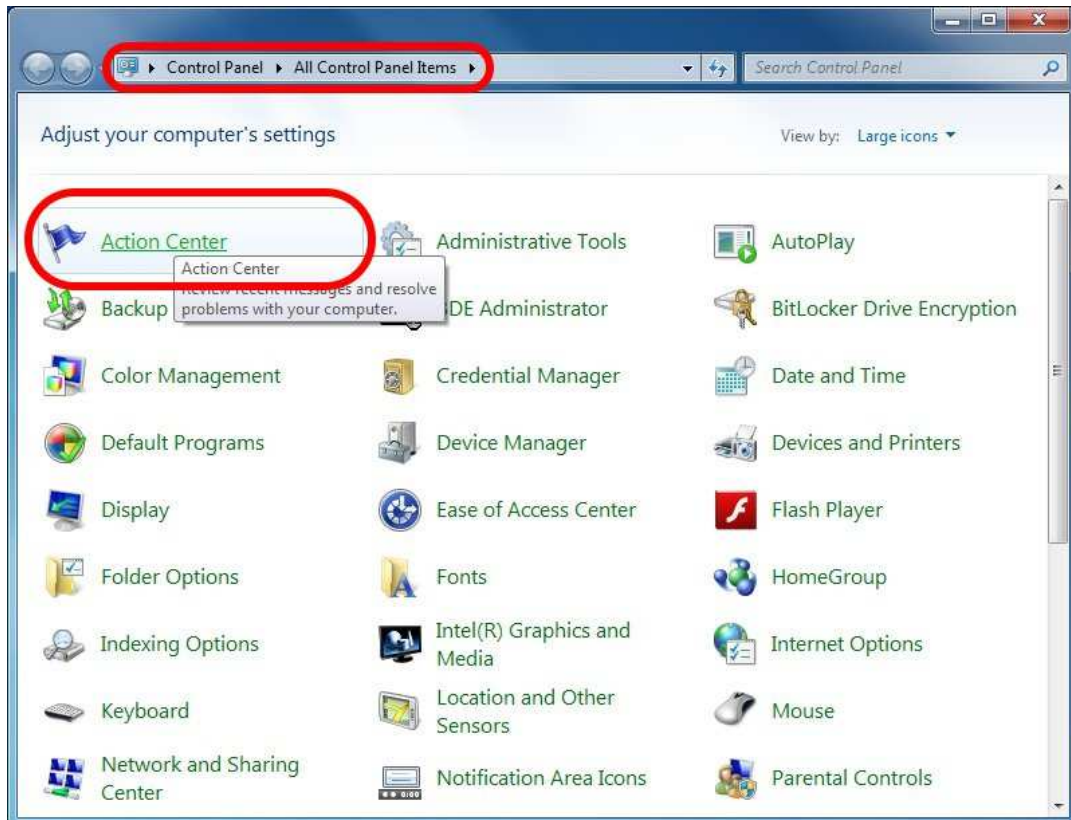
- J. Click "Next" to finish install.



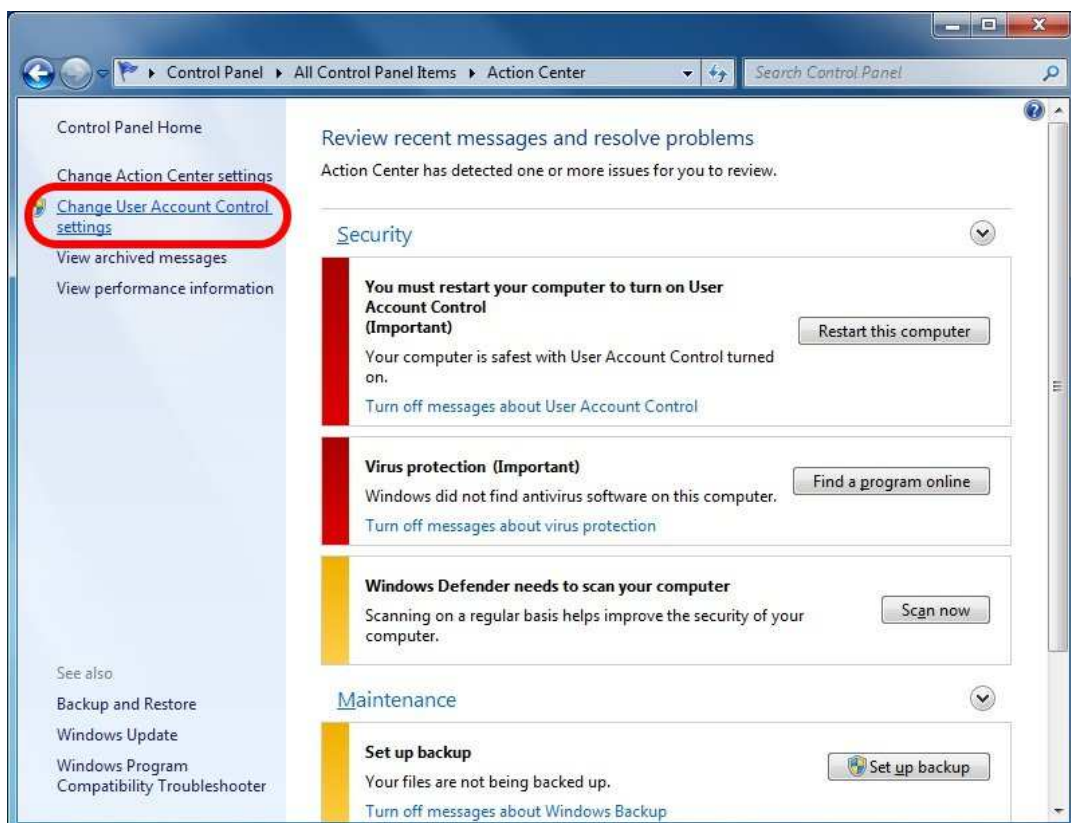


6. Change Windows User Account Control settings (UAC).

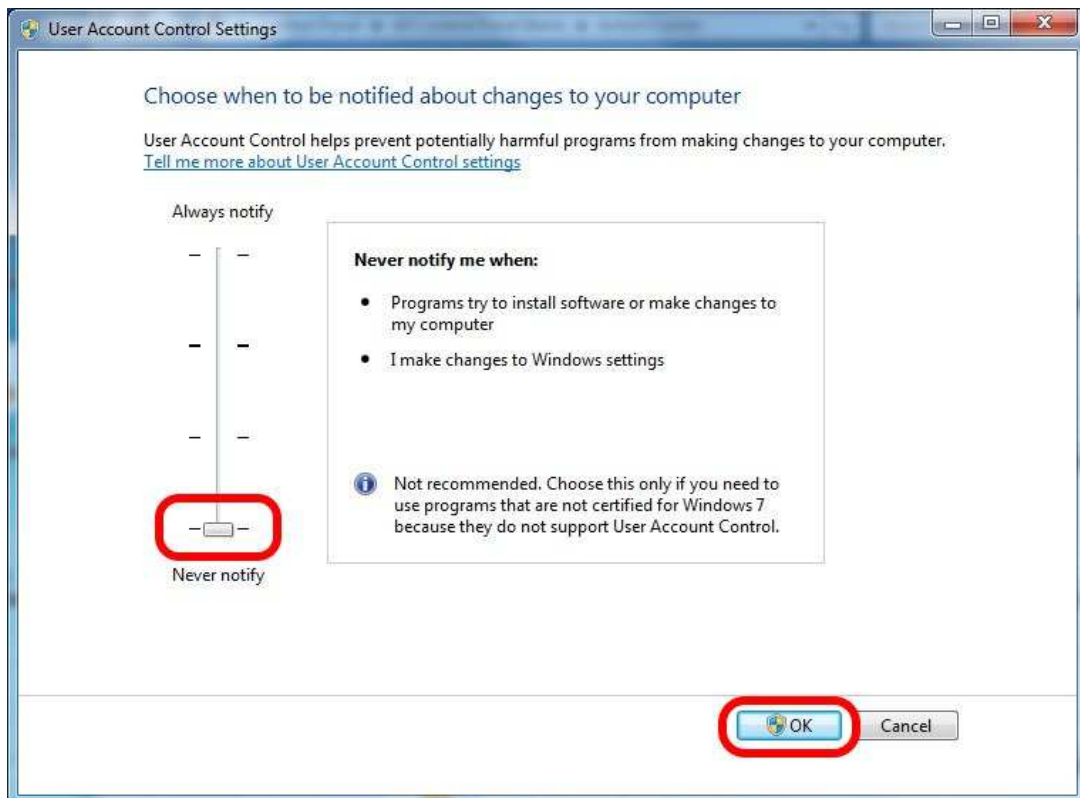
A. Open Control Panel and click “Action Center”



B. Click “Change User Account Control settings”.

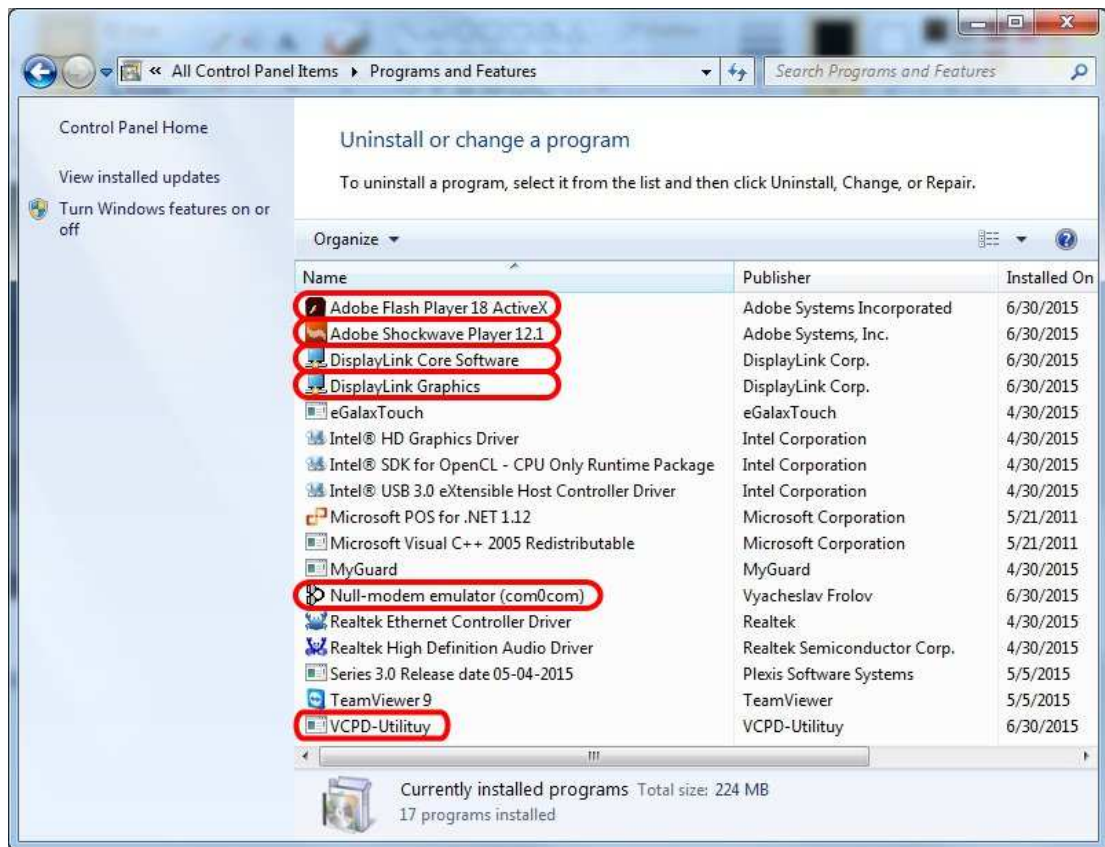


C. Drag the bar to change UAC setting “Never Notify” and click “OK”.

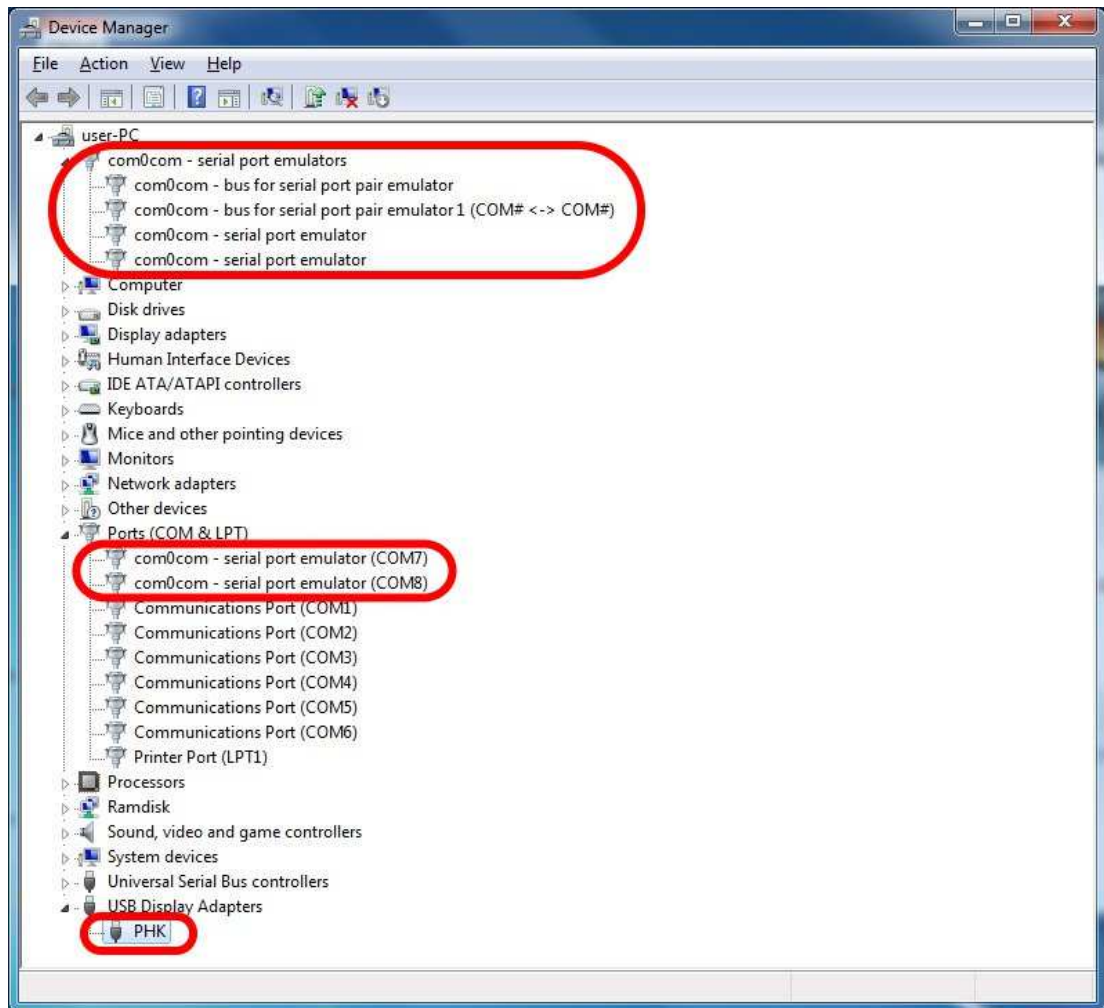


7. Confirm all software programs components

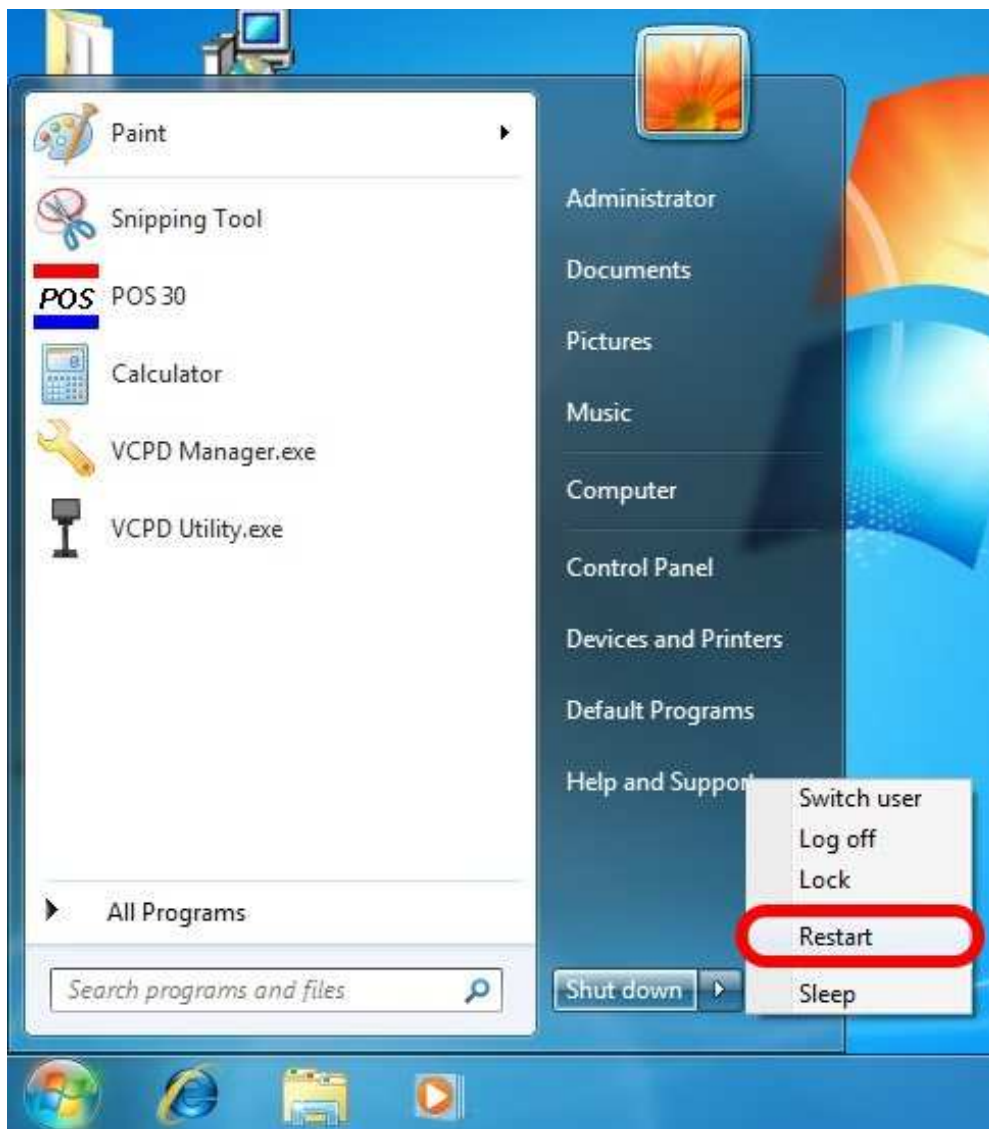
- A. Open “Program and Features” from Control and check whether follow software existing.
 - i. Adobe Flash Player, Adobe Shockwave Player, DisplayLink Driver, VCPD software with com0com.



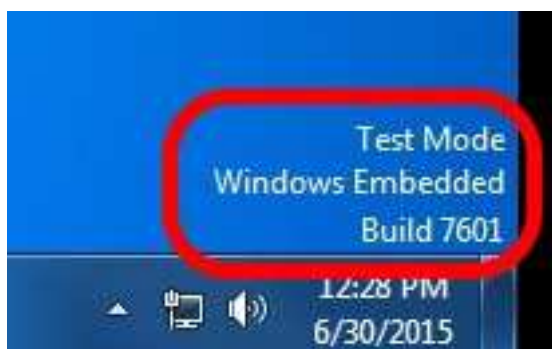
- B. Check all hardware with virtual devices in “Device Manager”.
- i. There are 1set virtual com port, and P070UG (ID=PHK) as following diagram.



C. After confirm all program and device, please reboot your computer.

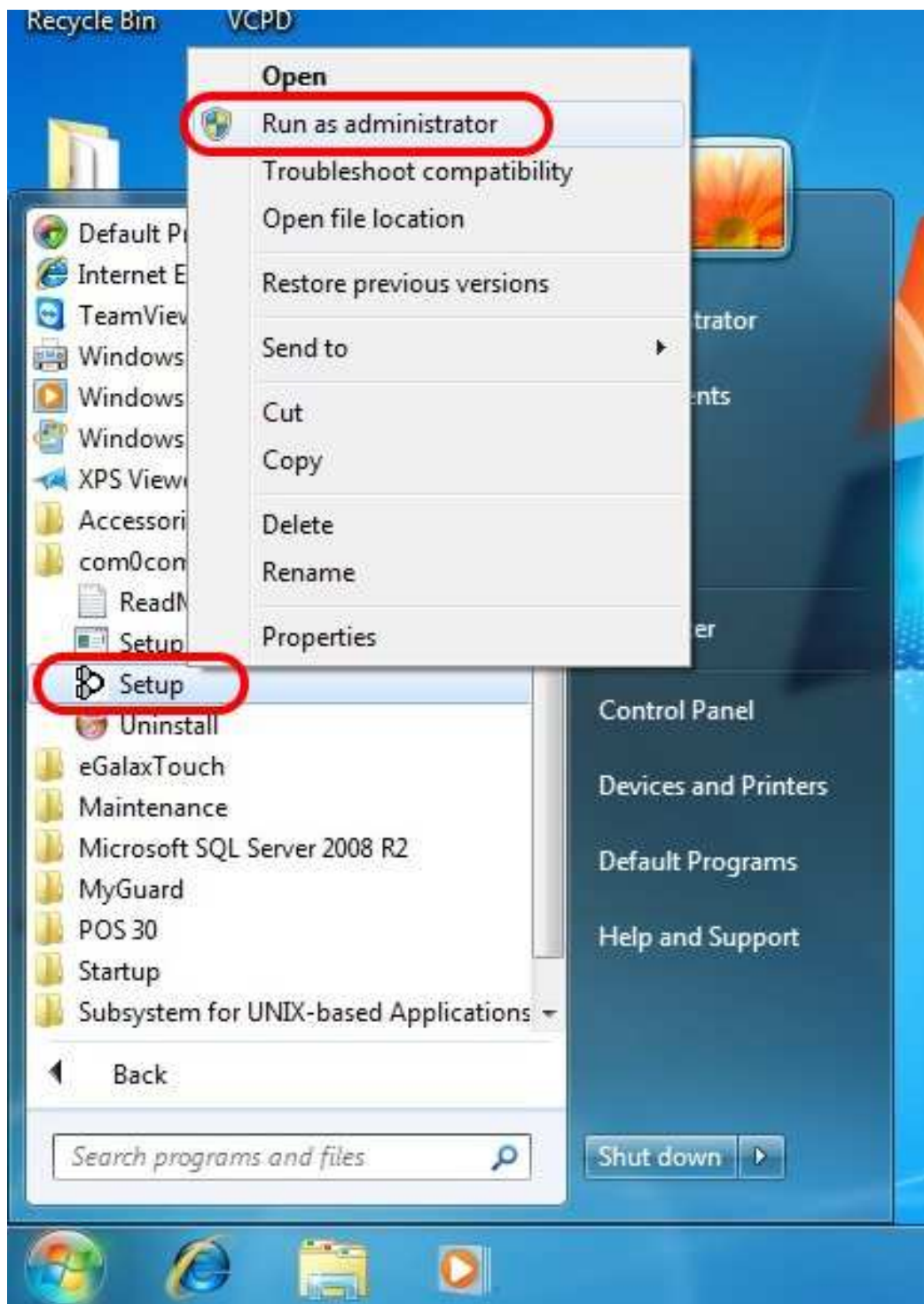


D. After reboot computer, there should be “Test Mode” appear in right bottom corner.

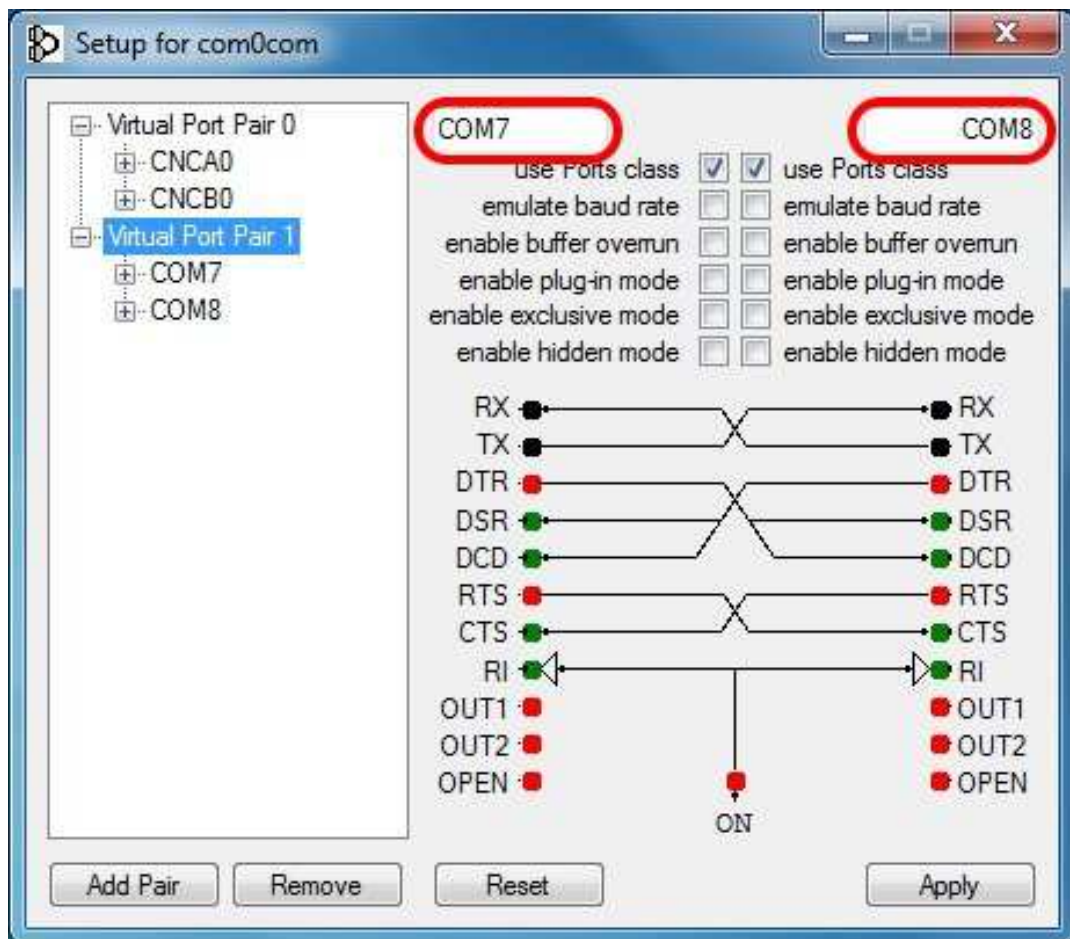


8. Set VCPD manager.

- A. Click Start and select “com0com” then right click on “setup” and choose “Run as administrator”.



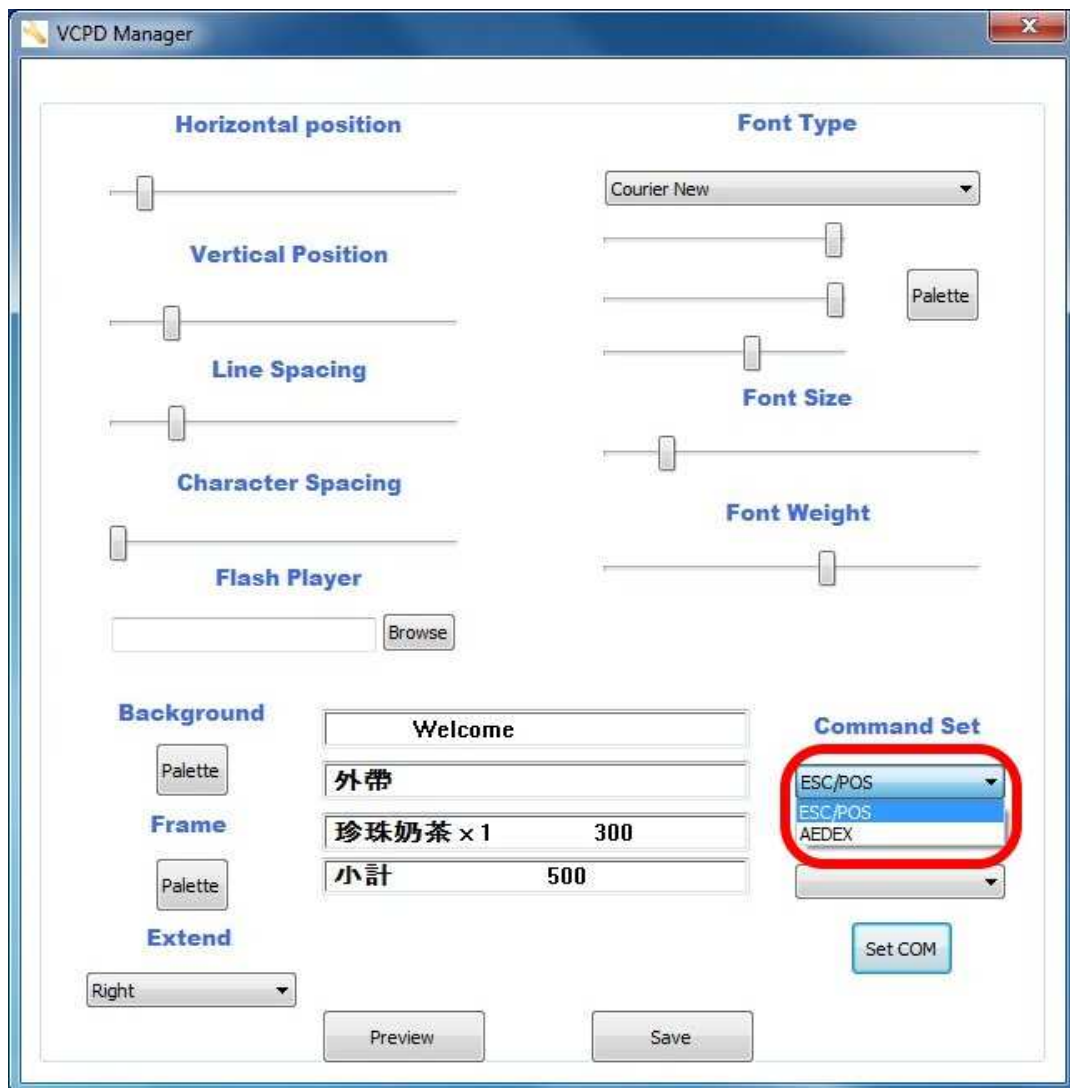
- B. Confirm that there is 1 **pair** virtual com port beside physical com port.
If **you** use POS machine, the virtual com port are COM7 and COM8 usually.
After confirm virtual com port setting, close the window.



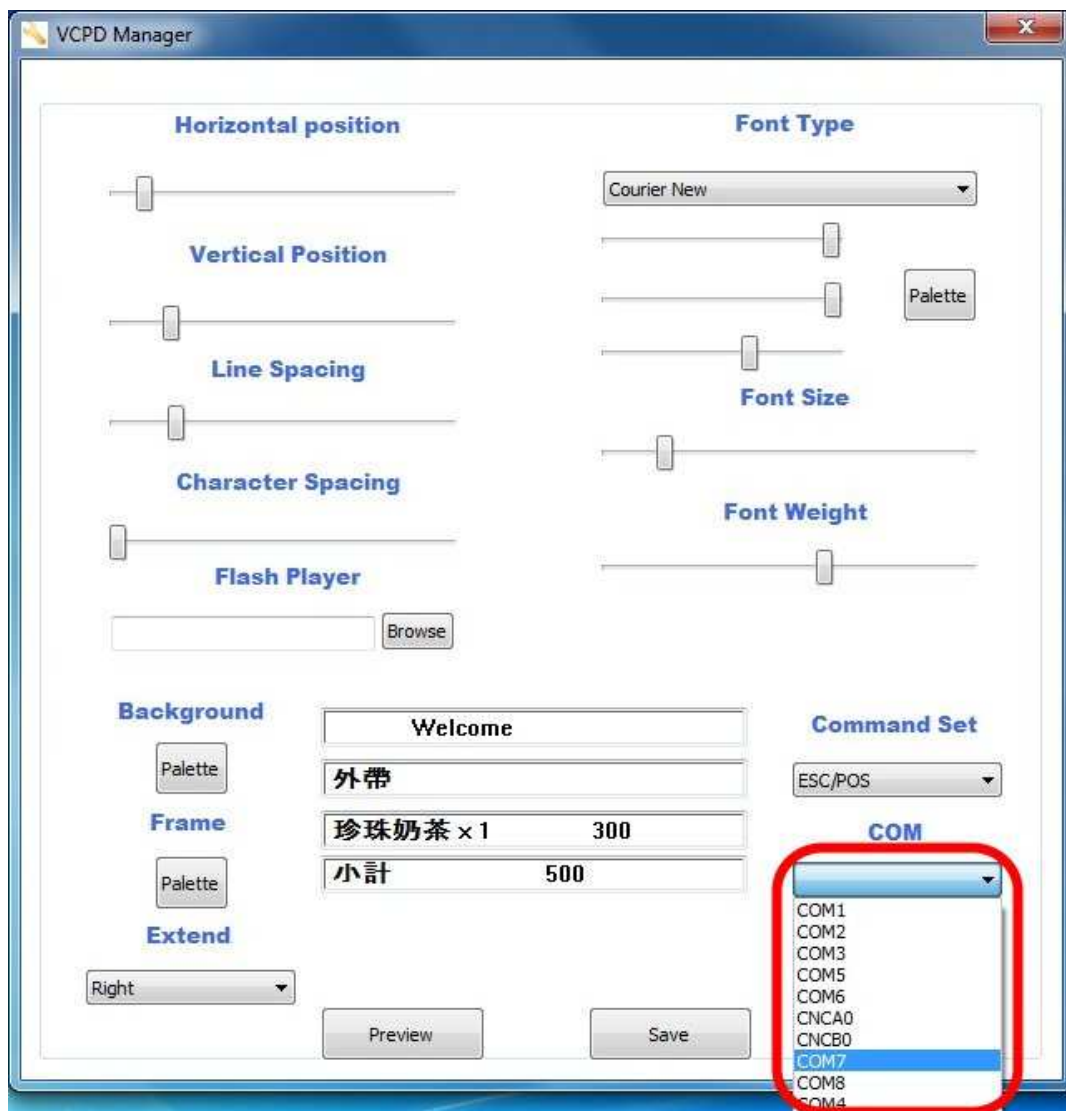
- C. Double click "VCPD Manager" on desktop.



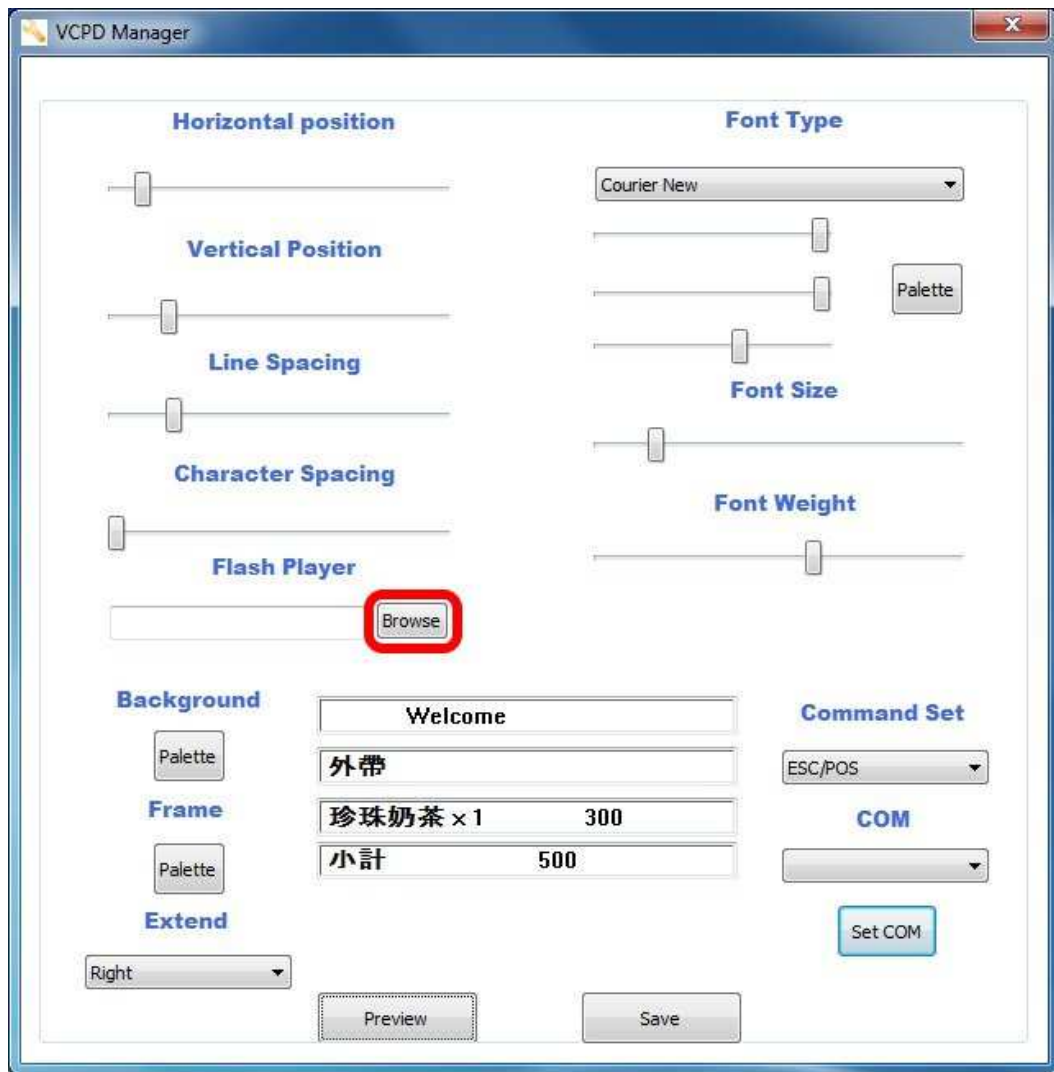
D. There are 2 command sets, depend on which command set in you POS software.



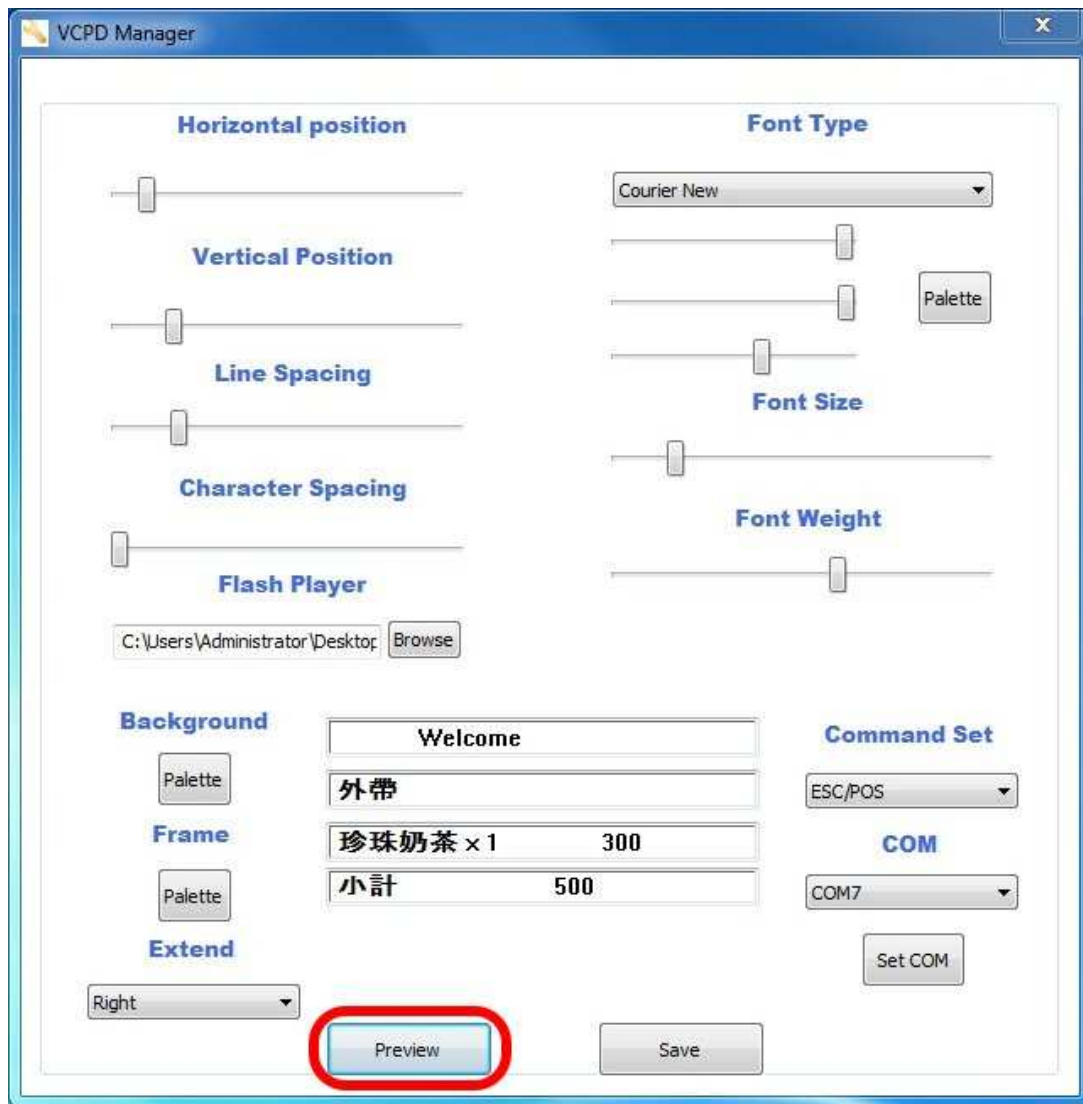
E. Set COM7 on COM port setting of VCPD Manager.



F. Select SWF file as you like.



G. Click "Preview" to check customer display layout.



H. Set VCPD complete and click “Save” to keep all setting, and close VCPD manager.



9. Set POS configuration and start to use.

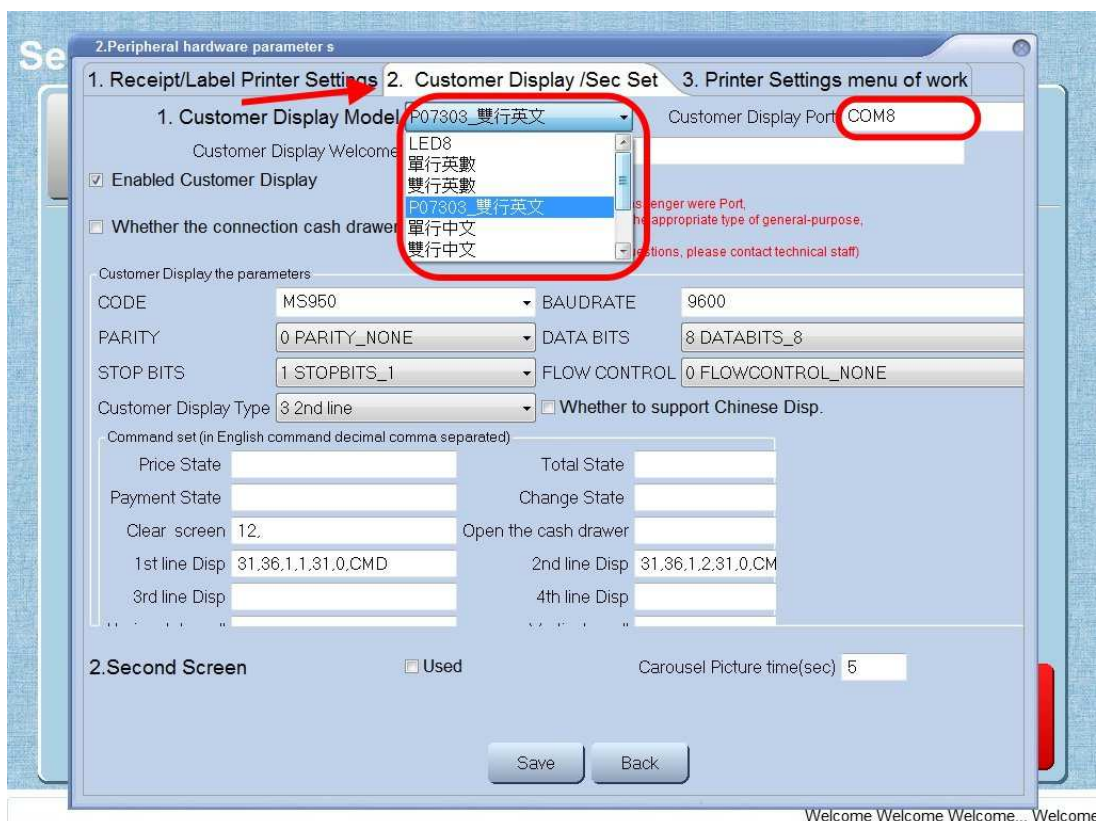
- A. Double click "VCPD Utility.exe" on desktop.



- B. It will appear in task bar as follow diagram.



- C. Set POS software customer display, set the com port in COM8 and connect to VCPD utility, and select command set (Customer Display Model).



- D. After finish POS customer setting, the VCPD can show information as POS software send.



10. FAQ:

- (1). **Q: Before P070UG-VCPD drivers installation, is there any application software needed to install?**
A: Adobe flash player, SWF player
- (2). **Q: What is driver installation sequence?**
A: Firstly install DisplayLink Driver, then VCPD Setup driver.

After installation, please reboot the PC.
- (3). **Q: Windows “Digital signature” will be closed during VCPD installation, is there any side effect?**
A: “Digital signature ” is only temporary closed during installation, it will be automatically turned on after installation. There is no effect or difference to system and product operation.
- (4). **Q: VCPD Setup v1.3 driver include “VCPD Manager” and VCPD Utility, what are their features?**
A: a. **VCPD Manager Features:**
- Setup the display information appearance:
Font type, Font size, Font color, Font space, Font weight, Line spacing, Character spacing, Background color.
- Select Command set
- Flash video file path.
- Setup Video Display relative position to Host Display: Left side or right side
After all above parameters are set up, press “Save”.
b. **VCPD Utility Features:**
To execute all settings of VCPD Manager.
- (5). **Q: How to setup Virtual COM?**
A: Use VCPD manager.exe, to set COM, there will be 1 pair Virtual COM port.
VCPD should select one of the pair, and POS software side to choose the other COM port (Please refer to section 8).
- (6). **Q: What is resolution of P070UG-VCPD?**
A: Total Display resolution is 800 x 480, VFD display area is 800 x 240,
and Flash video play area is 800 x 240.
- (7). **Q: No Display, No LED Light:**
A: No Display, NO LED Light, please check if DisplayLink Driver is successfully installed.
No Display, but LED is Light, please check if VCPD v1.3 is successfully installed.
- (8). **Q: Except ESC/POS command set, does P070UG-VCPD support other command set?**
A: P070UG-VCPD only supports ESC/POS (30 columns x 4 lines) and AEDEX command set.