

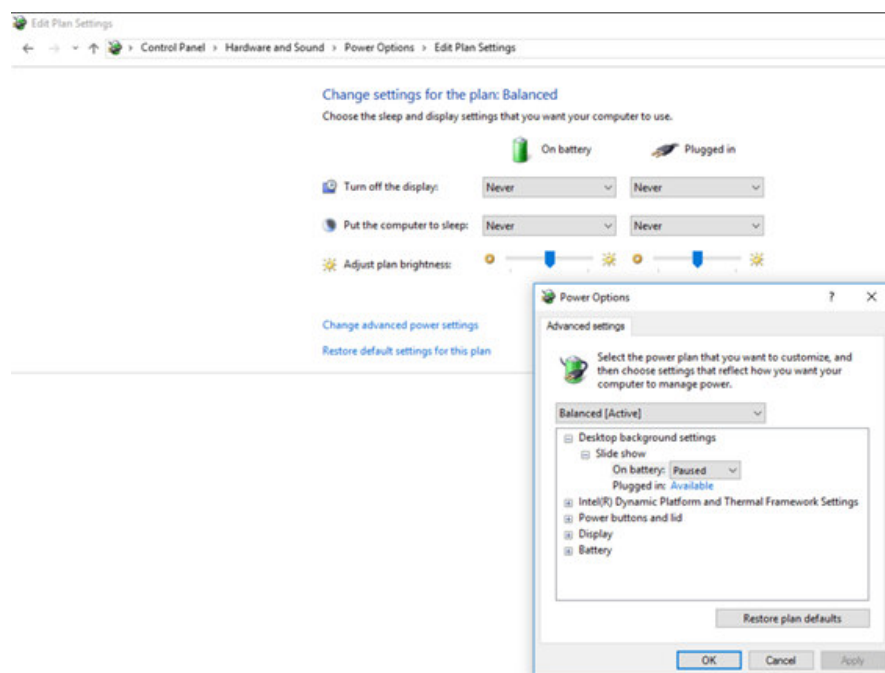
AT-1450

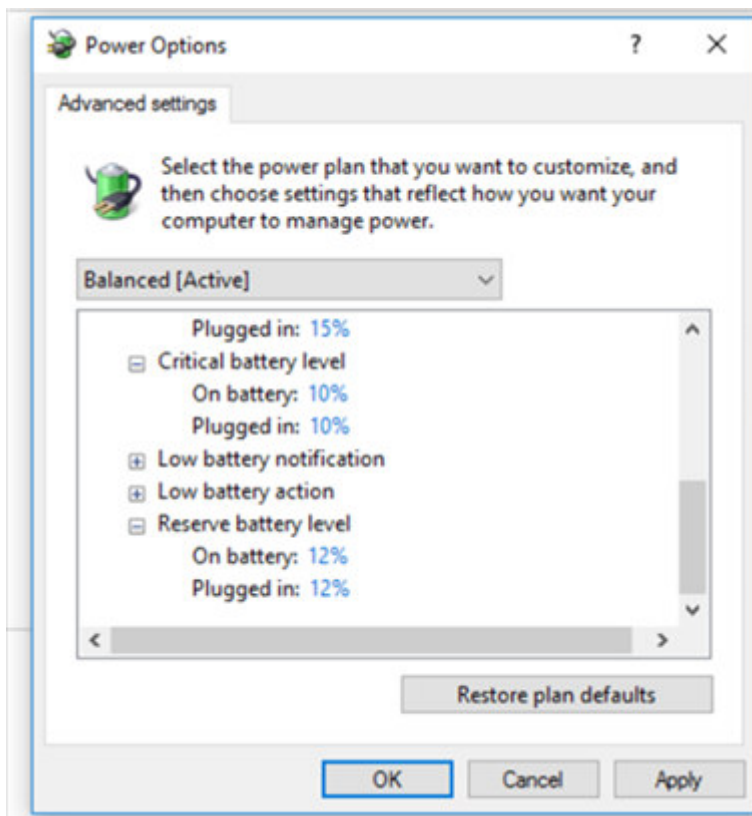
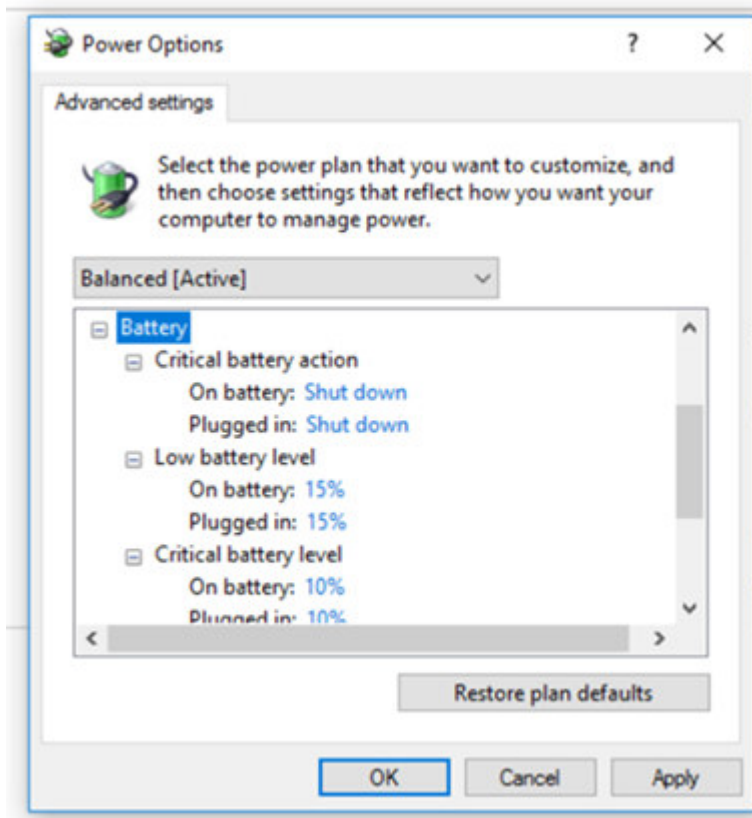
BATT. SETTINGS for 1st Generation AT-1450

Application Notice:

1. AerTAB (AT-1450) low power self-protection: Due to the AT-1450 battery safety and power security design, there are two levels of low power self-protection, first is at Tablet MB side, and second is at battery pack side. However, FEC discovers in some application cases, which might trigger Battery Protection earlier than Tablet MB Protection when the battery level go too low without charging.
2. Trigger self-protection Symptom: When battery level goes down till Windows force shut system down, for example, 5% of battery power remaining, it is likely that Battery self-protection is triggered during Windows shut down, which would cause AerTAB can not be charged by external USB charger or Docking Station.
3. Short Term Solution:

Change Power management settings of Windows 10 Control Panel: raise % of “Low Battery Warning” to 15%; “Reserve Battery Level” to 12% ; “Critical Battery warning” 10%; and set the action as shut down.





4. Long Term Solution: In the following shipment, FEC will enhance these two protection levels have enough tolerance in between first MB protection and Battery protection.

13.3.2017 fe