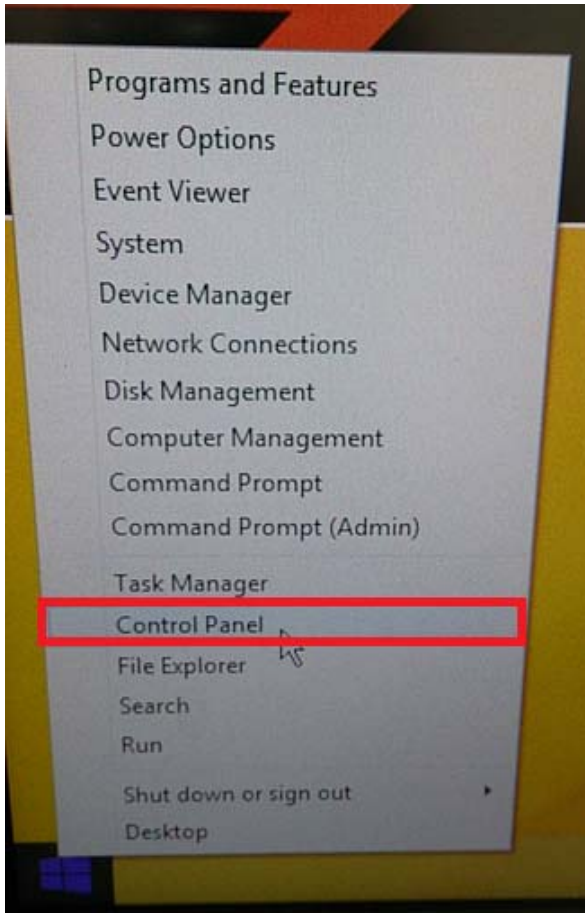


17" P-Cap touch Touch Mode SOP

EETI Driver eGalaxTouch_5.13.0.11328 only operates in Mouse Mode. To have eGalax controller work in Touch Mode, this driver must be removed and use the default touch driver in Win7 or Win8. In addition, Windows does not have beep on touch feature.

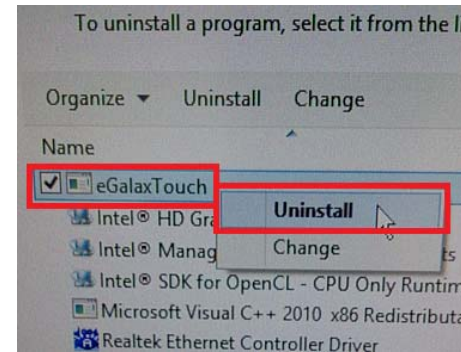
The removal procedure is as follow.

Invoke **Control Panel**.



Right click on **eGalaxTouch**, choose **Uninstall**, then Re-boot System. For Windows 7, Touch Mode is in effect.

Windows 8 requires additional steps.

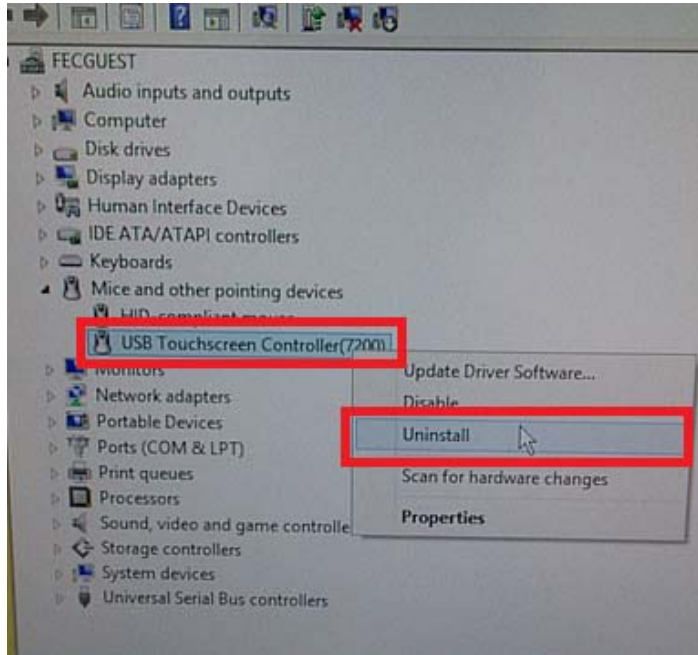


Choose **Device Manager**.

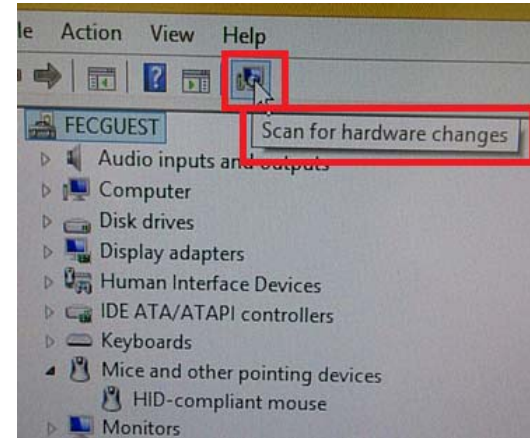


17" P-Cap touch Touch Mode SOP

Right click on **USB Touchscreen Controller(7200)**, choose **Uninstall**.



Click **Scan for hardware changes**.



There should be a **HID-compliant mouse** entry. Touch screen is now in Touch Mode

Check **Delete the driver software for this device**. Click **OK**.

