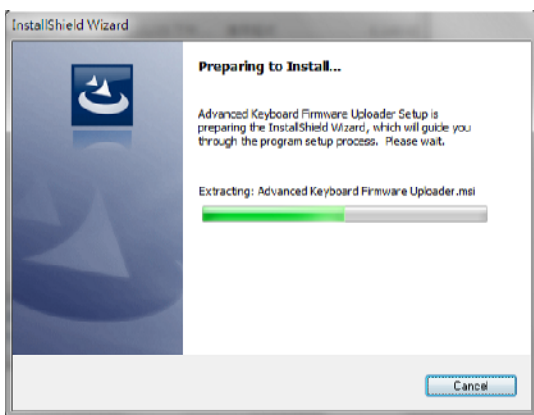
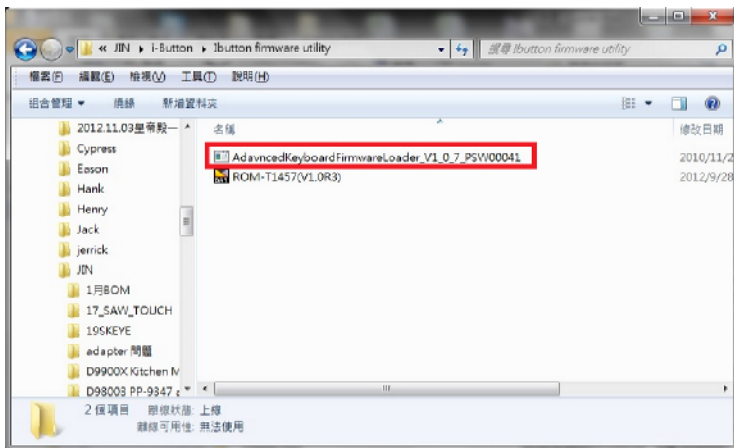
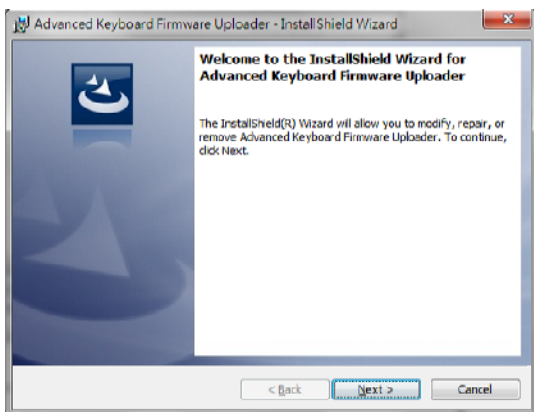


I-Button Up date Firmware SOP

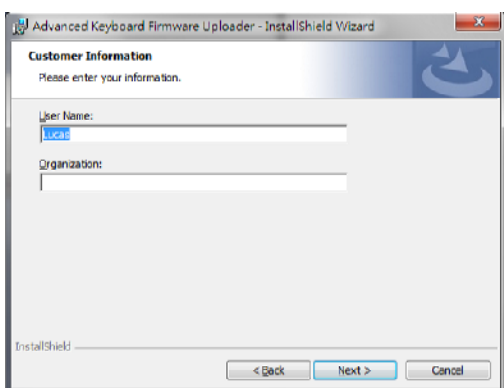
1. Install “AdavncedKeyboardFirmwareLoader_V1_0_7_PSW00041.EXE”



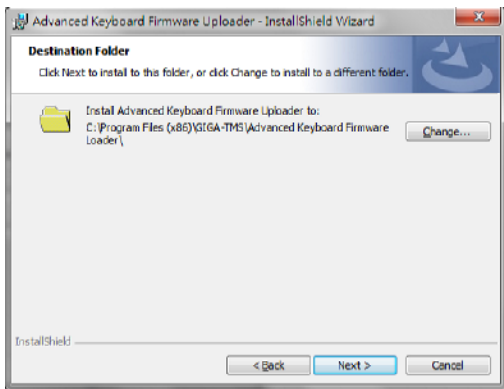
Next



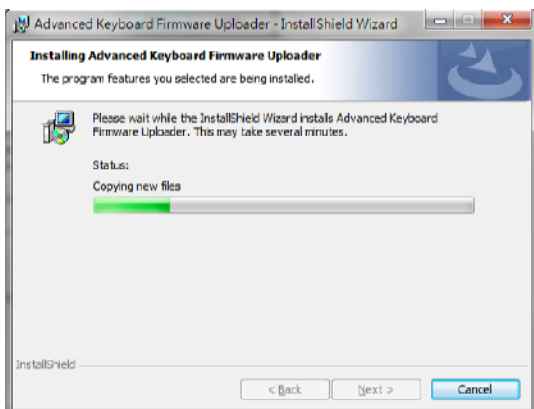
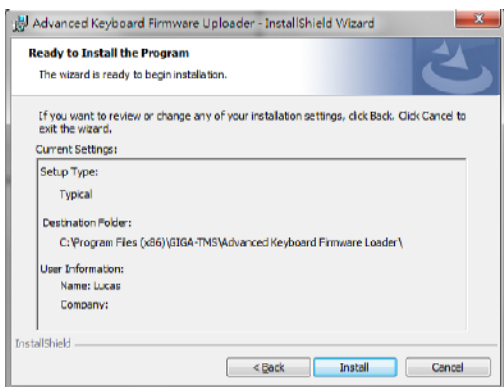
Next



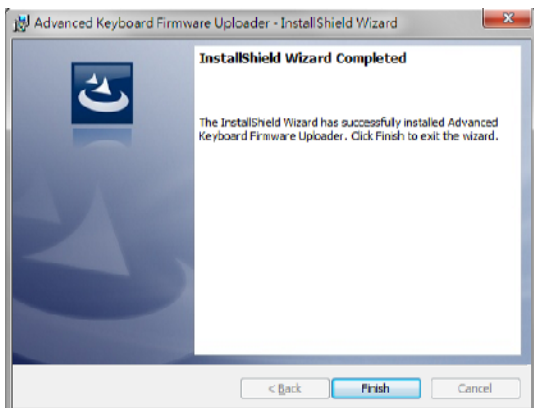
Next



Install

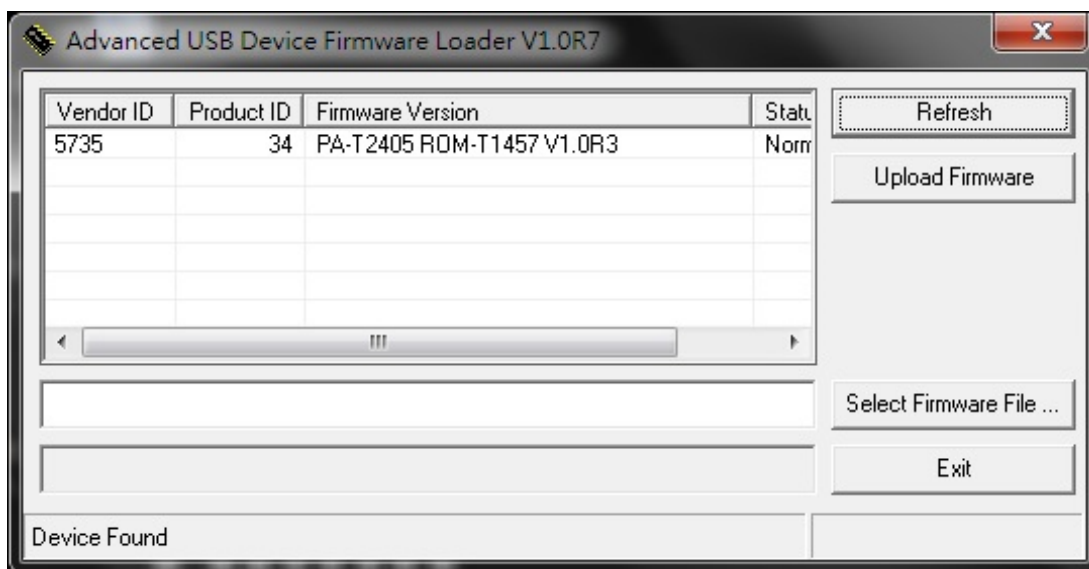
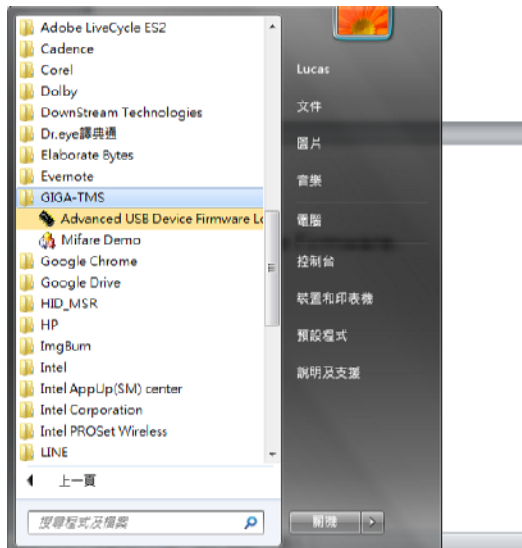


Finish

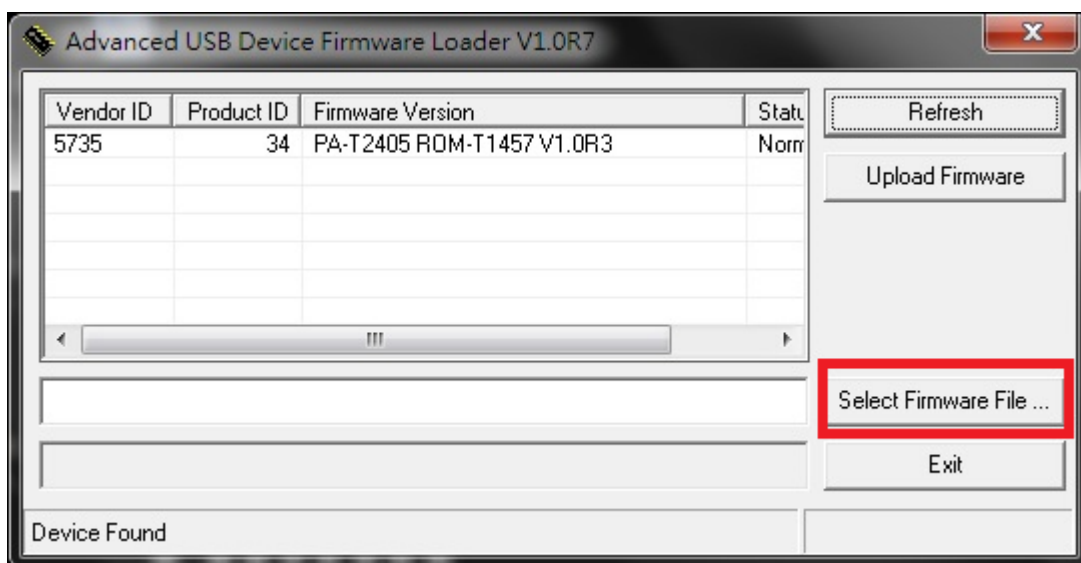


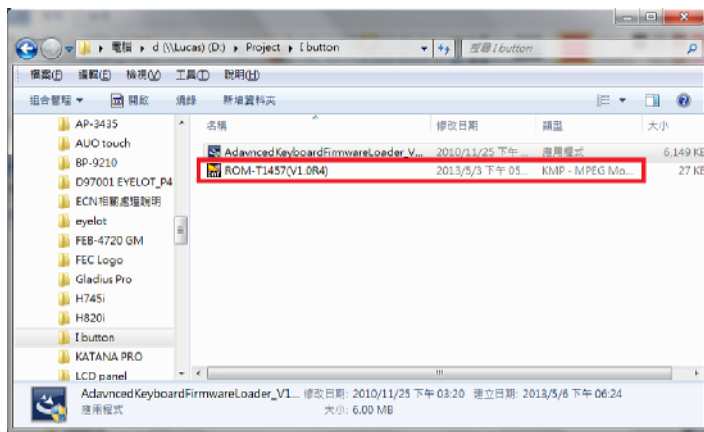
2. Up date Firmware

Open “AdvancedKeyboardFirmwareLoader_V1_0_7”

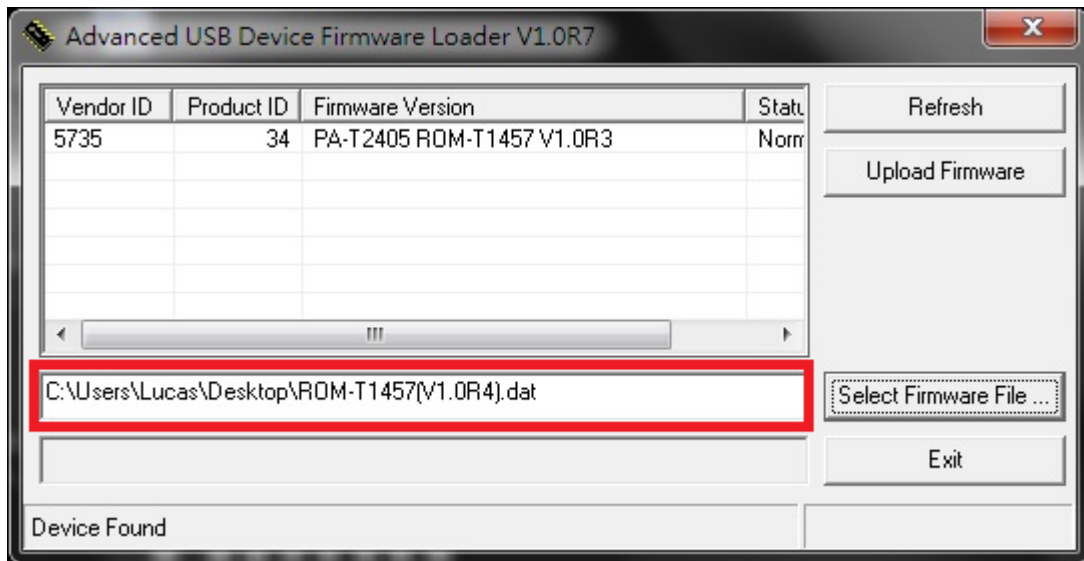


Select Firmware File

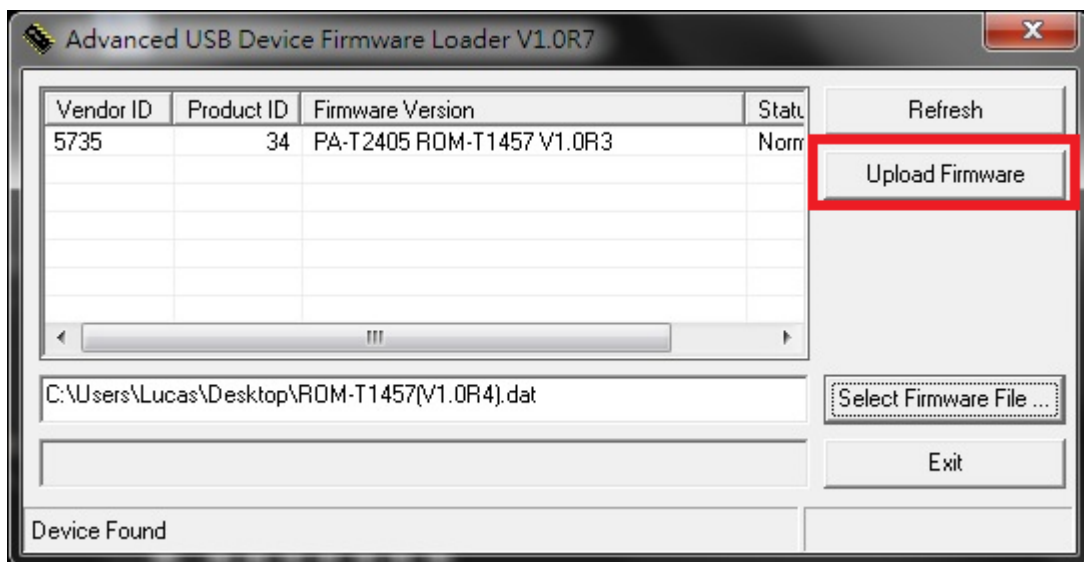


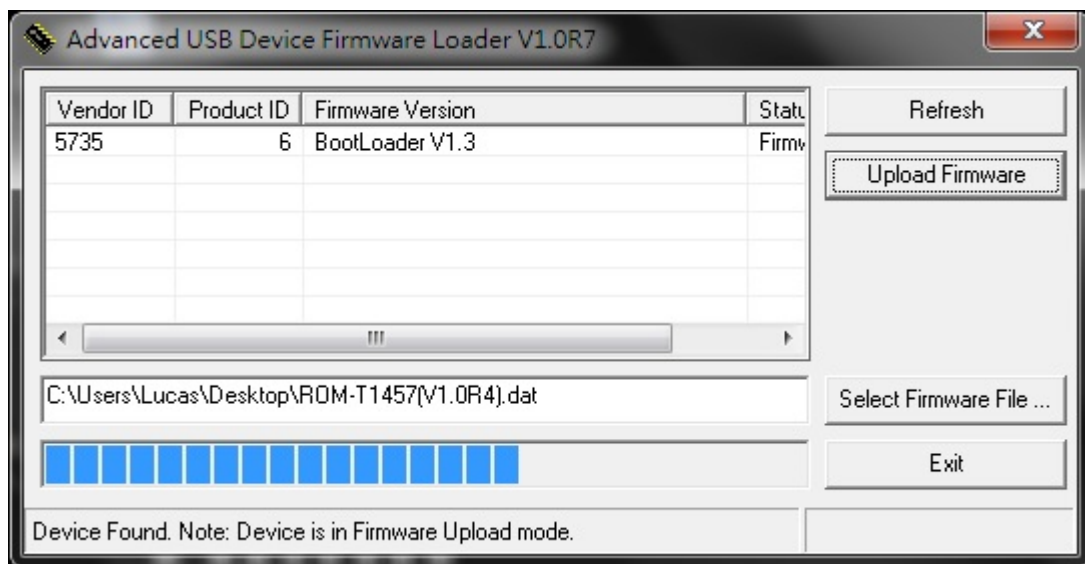


Check file name



Click Upload Firmware





Check Firmware Finish

