

BP-561R SMART Management / RAID User Guide

V0.99

Edited by	Stan Huang	Release Date	2014-0630
Checked by		Release Version	
Approved by			

Update Log

Version	Date	Author	Update Description
0.90	2014/03/20	Stan Huang	Initial version
0.91	2014/03/26	Stan Huang	Added .net 3.5 requirement
0.92	2014/05/08	Stan Huang	<ul style="list-style-type: none"> Updated for ver. 1.4.0 Added event map description Added hotkey Removed the statement of .net 3.5 requirement
0.93	2014/05/16	Stan Huang	<ul style="list-style-type: none"> Added screenshots to help comprehension. Applicable to SmartRAID ver.1.4.1
0.94	2014/05/20	Stan Huang	<ul style="list-style-type: none"> Sec. 2.1 “Just run the setup.exe” → “Just run the RAIDSetup-<version>.exe “
0.95	2014/05/23	Stan Huang	<ul style="list-style-type: none"> Updated for sw update from 1.4.2 → 1.4.3
0.96	2014-05-30	Stan Huang	<ul style="list-style-type: none"> Updated for change of spec. 1.4.3 → 1.4.5
0.97	2014-0603	Stan Huang	<ul style="list-style-type: none"> Updated sec. 3.1.2.1 according to ver. 1.4.5
0.98	2014-0604	Stan Huang	<ul style="list-style-type: none"> Updated sections 3.1.2.* Added description about setting.ini at sec. 3.1.2.1
0.99	2014-0630	Stan Huang	<ul style="list-style-type: none"> Updated startup screen shot for ver. 1.4.6

Content Table

1.	Introduction.....	3
2.	Installation	3
3.	Usage	6
	3.1 Smart RAID	7
	3.1.1 As Service.....	7
	3.1.2 As Utility	8
	3.1.2.1 Launch RAIDUtil from Startup	9
	Setting.ini.....	10
	3.1.2.2 Launch from RaidControlPanel	10
	3.1.3 Event Map	12
	3.2 Smart Management.....	12

1. Introduction

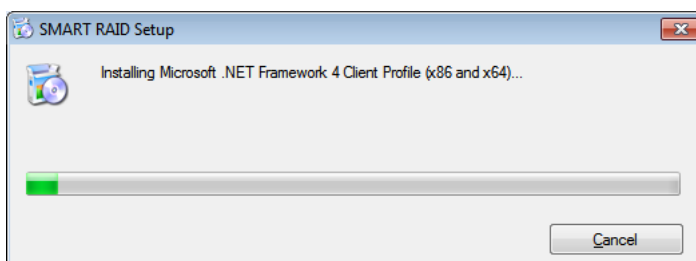
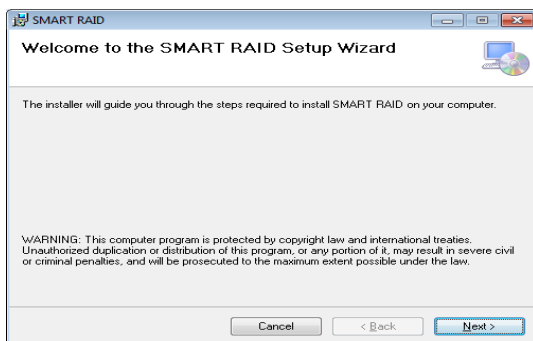
This document will teach you how to install and use Firich's SMART Management and SMART RAID.

After installation, one of the two utilities will run as system service at next time system startup. If you would like to run the other one, the running one must be stopped.

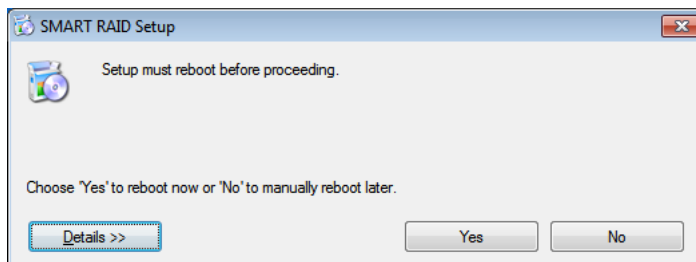
2. Installation

Just run the RAIDSetup-<version>.exe as Administrator and the program will guide you step by step to install the two utilities into your machine. Most steps are just like a regular Windows application installation and you can make the decision. Some description will be added together with screen shots.

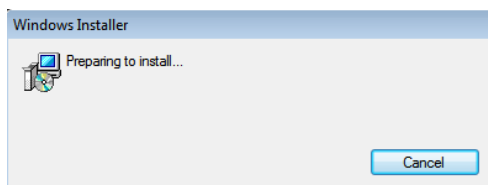
There are two ways to bring in .net framework into your platform. One is install .net framework by itself before installing SmartRAID. The other way is to install SmartRAID directly and .net framework will be installed automatically in the middle of SmartRAID installation. The process of both ways are very similar, but still there are a little difference. Below screen shots will show the second way.



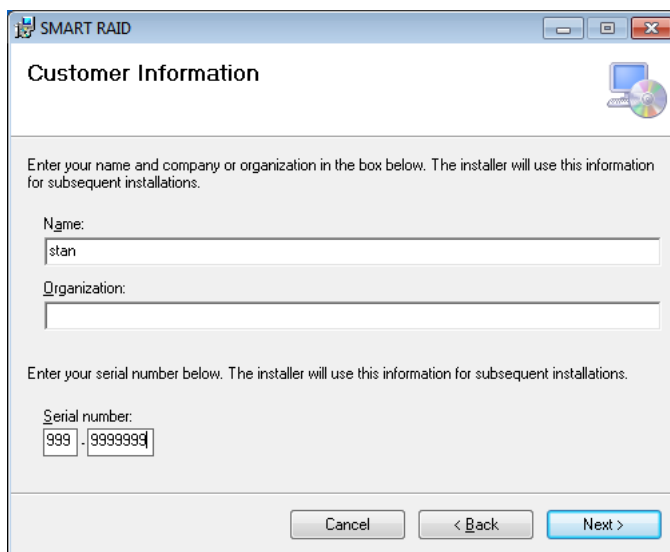
After .net framework is installed successfully, it will request to reboot. Just click "Yes" button.



After reboot, the installation will be continued automatically.

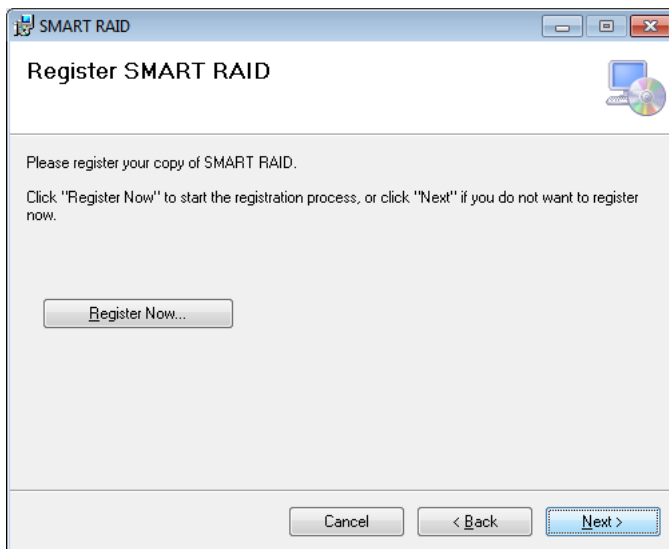


For user information, just key in any digits.

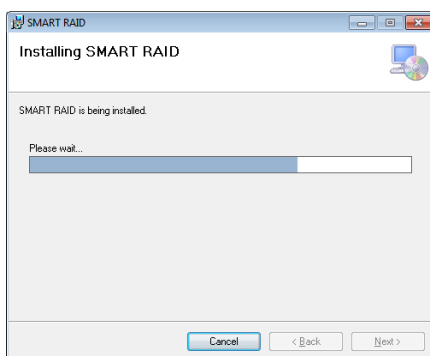
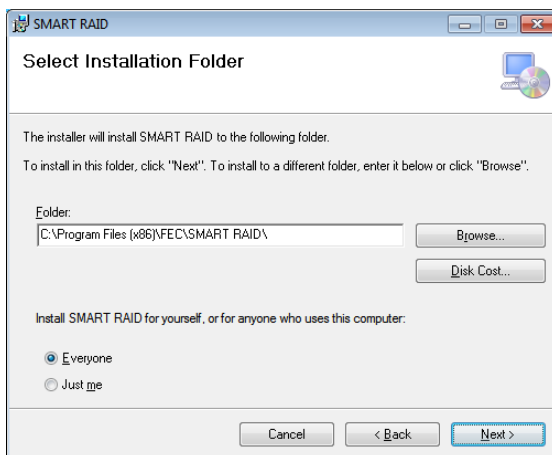


Then, a message prompt will appear as below. Don't click "Register Now" button. Just click "Next"

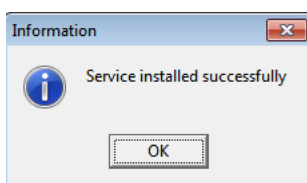
button.



From now on, just keep clicking “Next” or “Yes” buttons as usual installation program.



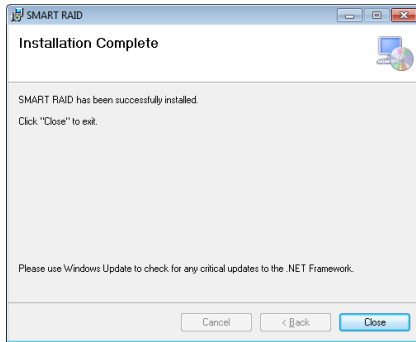
In the middle of the installation, you’re prompted to do install/uninstall/exit the Service. Press <Install>.



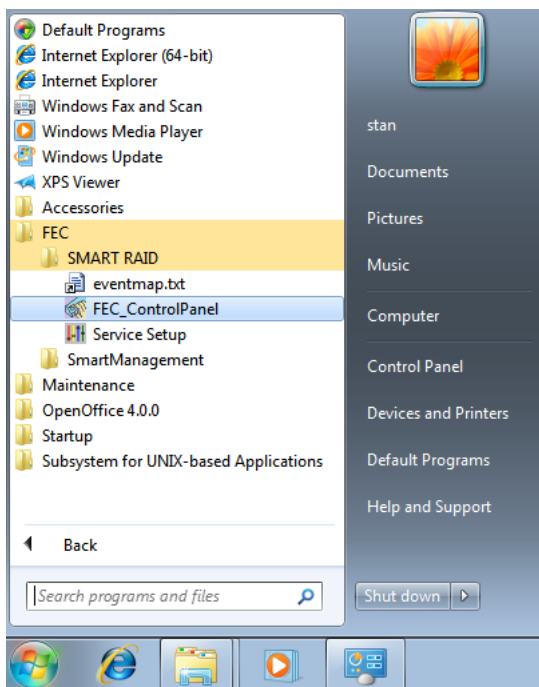
Then, the service will be installed. After finished, it will show below, press <Exit>.



Then, it will show complete message.



After installation succeeds, you can find the installed program from Windows system Start:



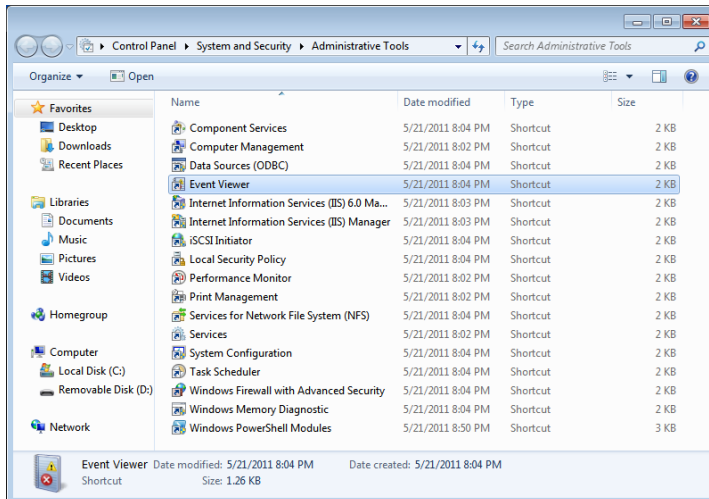
3. Usage

There are two ways to use the Smart RAID: as a system service (run automatically at background at system startup) and as hot-key-launched background task.

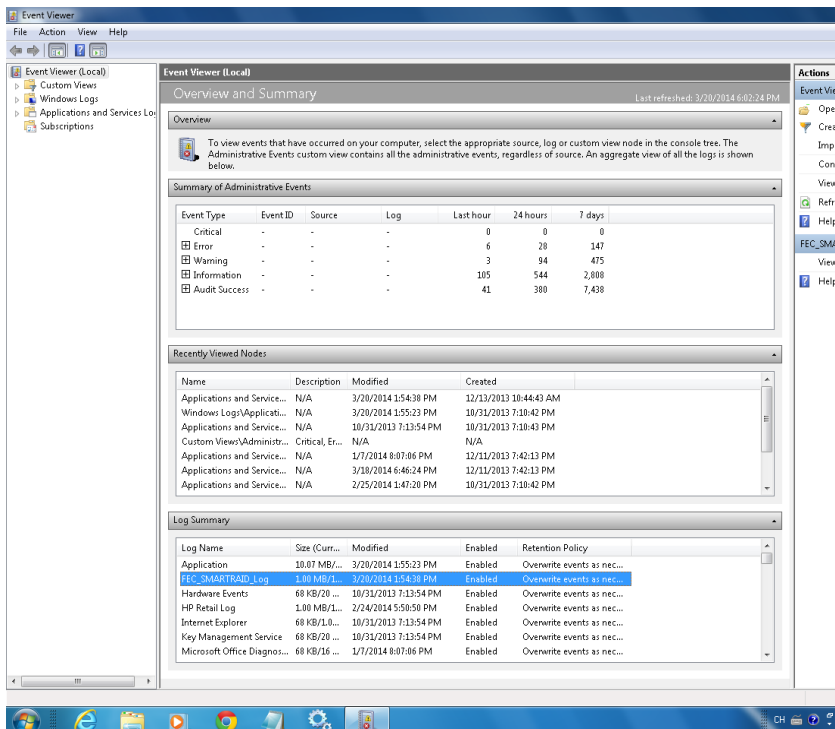
3.1 Smart RAID

3.1.1 As Service

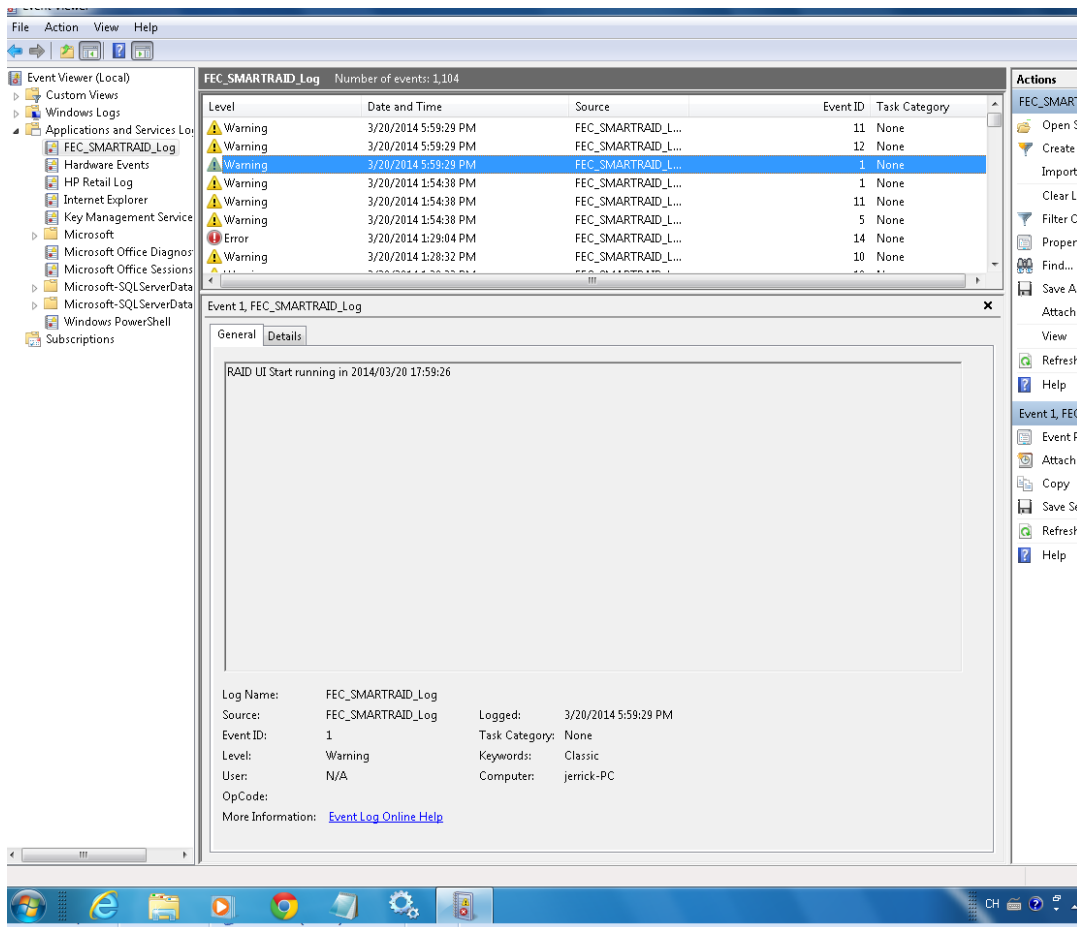
As previously said, after installation, you must restart your system for the service to work. You can open Event Viewer from **Start → Control Panel → System and Security → Administrative Tools → Event Viewer**



Clicking “Event Viewer”, you can start up below diagram to see events:



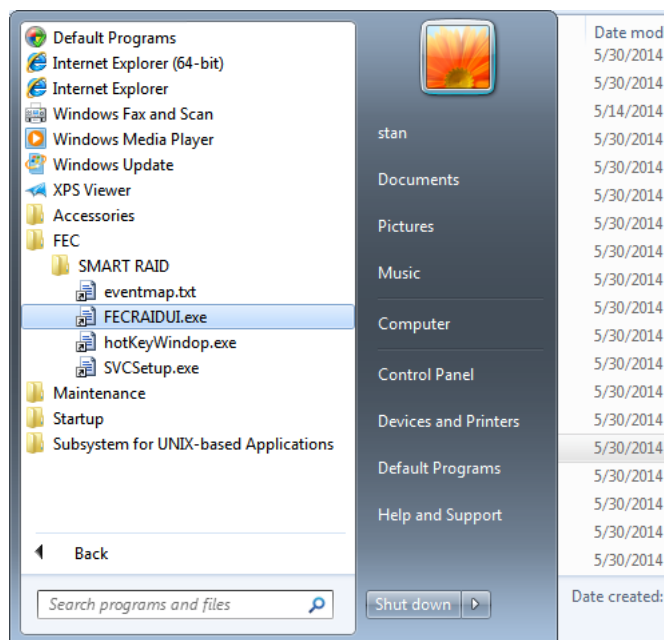
You can do some actions to it; such as draw out a disk from RAID and then events on Event Viewer:



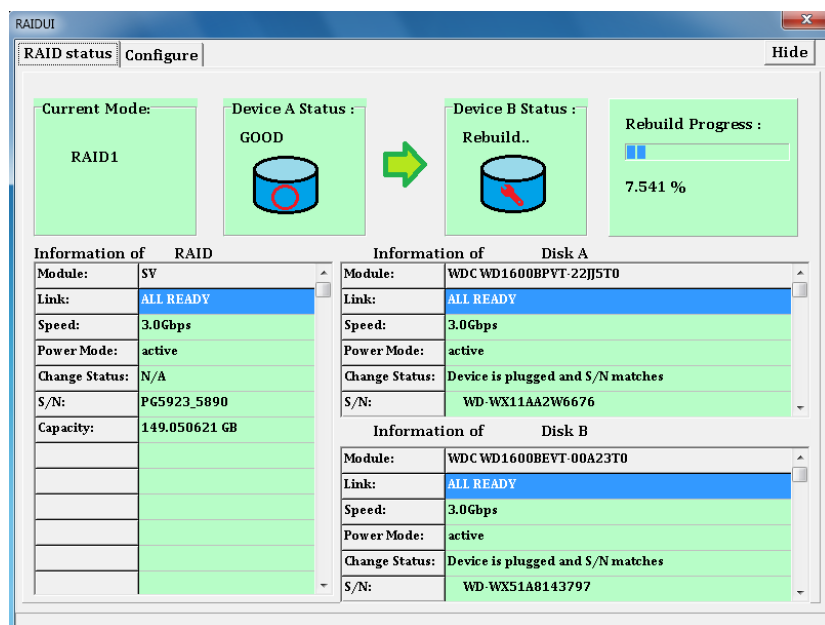
3.1.2 As Utility

There are two ways to launch the utility: from Startup and from hot key. If you choose to launch from Startup, you must run it each time when you would like to use this utility. If you choose to launch from hot key, you need to run it from Startup once. Later on, you can launch it using hot key combination.

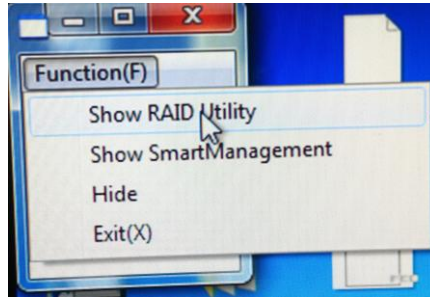
3.1.2.1 Launch RAIDUtil from Startup



It will look like:



You can leave it alone or make it disappear from the foreground by closing it or clicking “Hide”. If you would like to see it after closing it, you can re-run it from Startup or by clicking “Show RAID



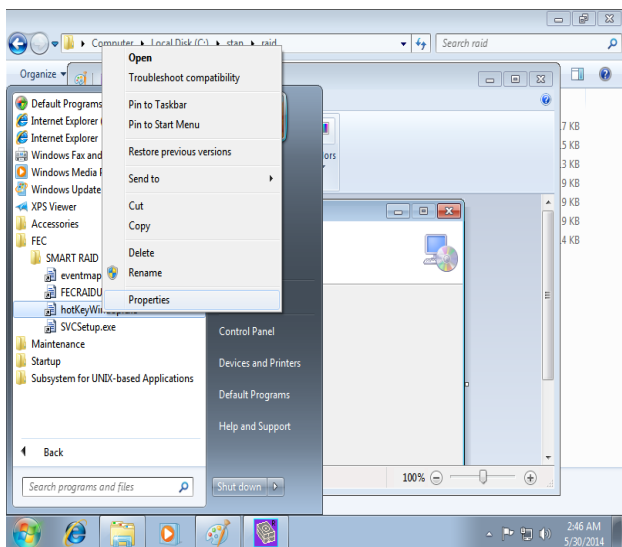
Utility” in RaidControlPanel. If RAIDUtility is put to background and you’d like to bring it to foreground, you must use RaidControlPanel as before. Refer the next section about how to use RaidControlPanel.

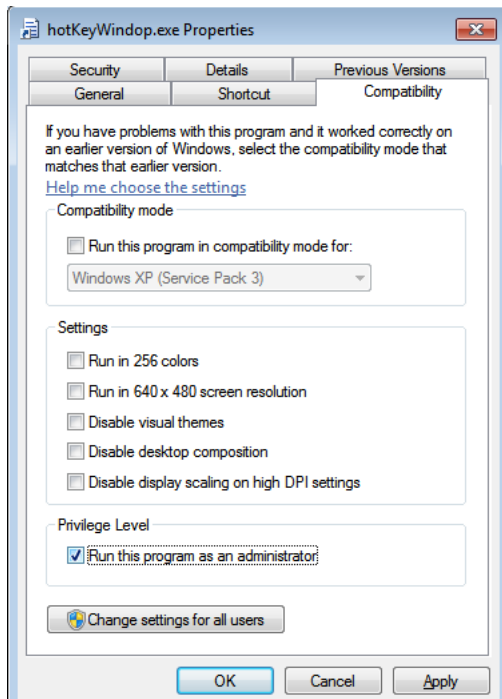
Setting.ini

When you run RAIDUtility, you may not find it on the screen. The reason is that the item ‘RunMode’ at section ‘Mode’ in `C:\Program Files (x86)\FEC\SMART RAID\setting.ini` is set as ‘h’. ‘h’ means ‘hide’. When ‘RunMode’ is set as ‘h’, RAIDUtility will be at background. You can use RaidControlPanel to bring it to foreground. When ‘RunMode’ is set as ‘s’ which means ‘show’, RAIDUtility will be at foreground when it’s run.

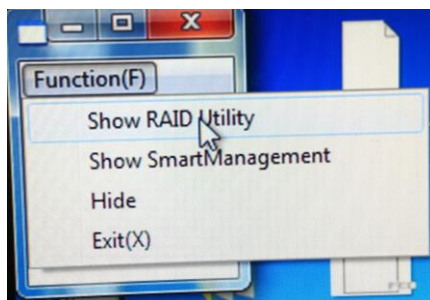
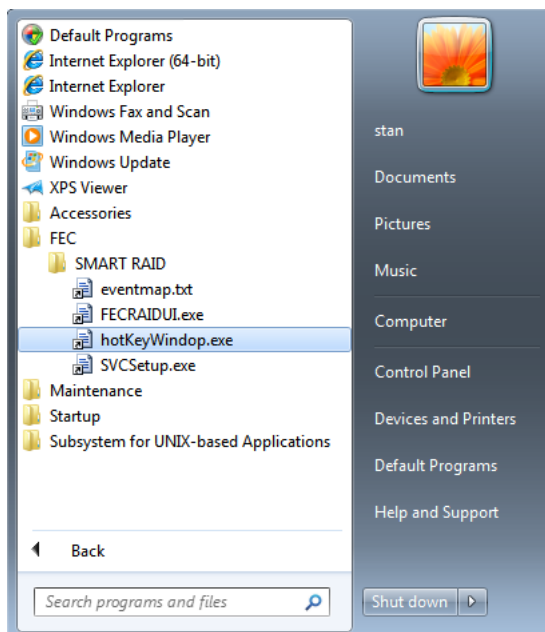
3.1.2.2 Launch from RaidControlPanel

Before running RaidControlPanel for the first time, you must set its property.

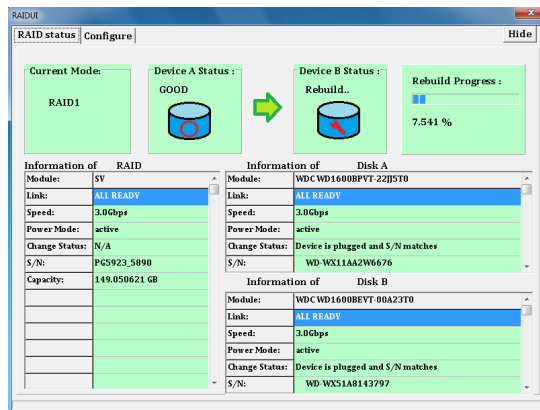




From now on, you can run it **As Administrator**.



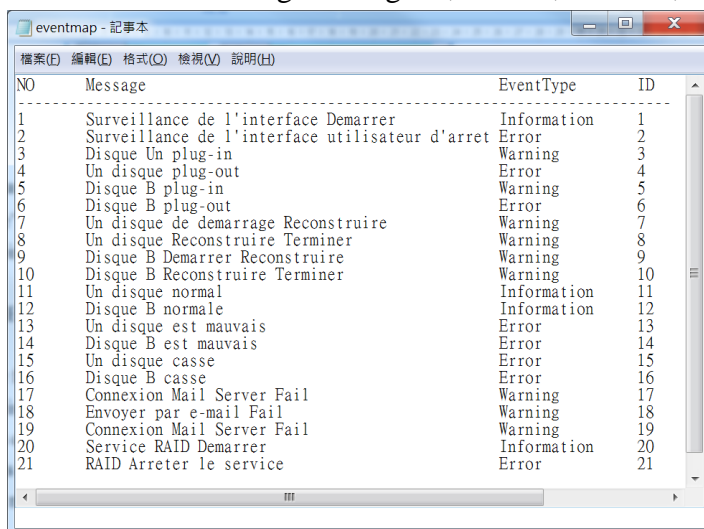
Then, you will get



Then choose “**Show RAID Utility**”, you can get as previously. Then you can click “Hide” to make it hidden. Once you would like to use it, you can invoke it using RaidControlPanel combination of **Alt+Ctrl+Shift+F10**.

3.1.3 Event Map

In the folder of SmartRAID is installed (usually here: C:\Program Files (x86)\FEC\SMART RAID), there is a file call **Event Map**: *eventmap* which is used to as description text of events of RAID, as below picture. Users can edit it in any language or any description text and stop / start Smart RAID, following events shown will use this description text in this event map. With such feature, you can have the event message as English, French, Chinese, Japanese, ...



3.2 Smart Management

(TBD)