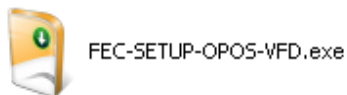


OPOS Intergration for the new generation of Firich VFD 9mm Version 10.x

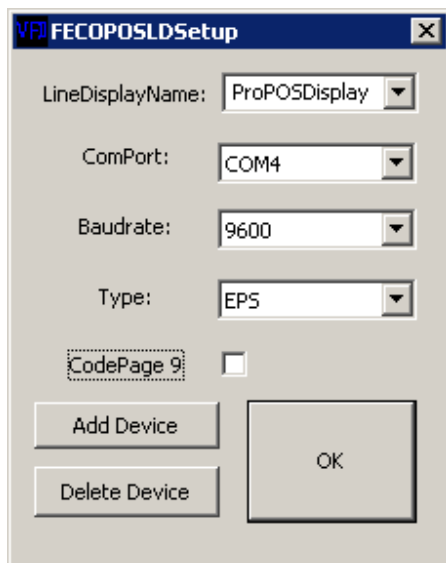
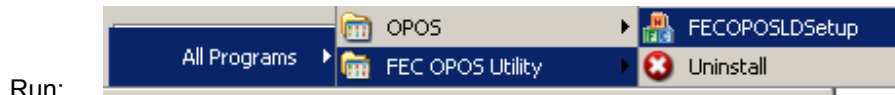
Because of hardware change with the VFDs of Firich you need to pre install the OPOS driver from Firich first, before you install the EPSON OPOS ADK.

1. FIRICH OPOS DRIVER INSTALLATION



Run:

After the installation make the configuration:



Type the LineDisplayName (LDN) into the top field, Example: ProPOSDisplay

Select your serial port

Select the Type: EPS for Epson Emulation

Close with OK Button

The OPOS Driver is now installed for your new Firich VFD Version 10.x

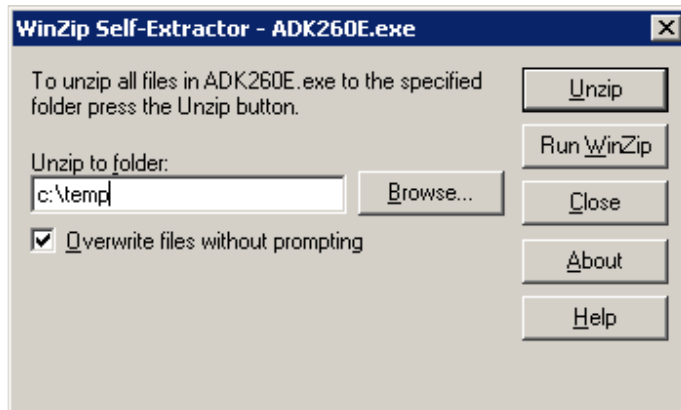
2. EPSON OPOS DRIVER INSTALLATION



ADK260E.exe

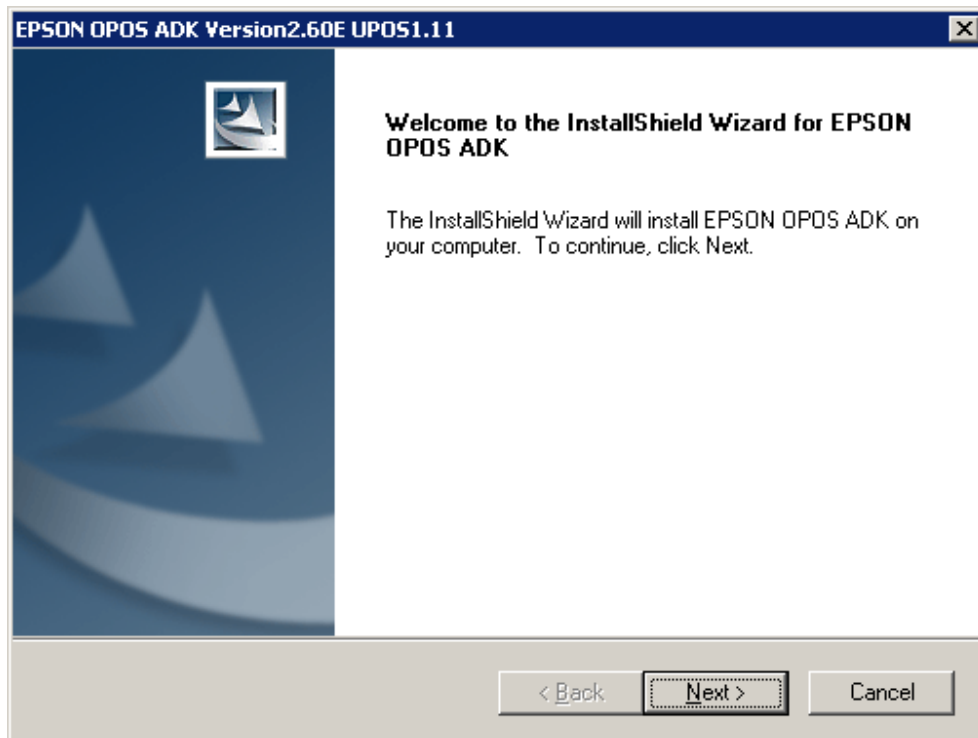
Run:

or higher Versions

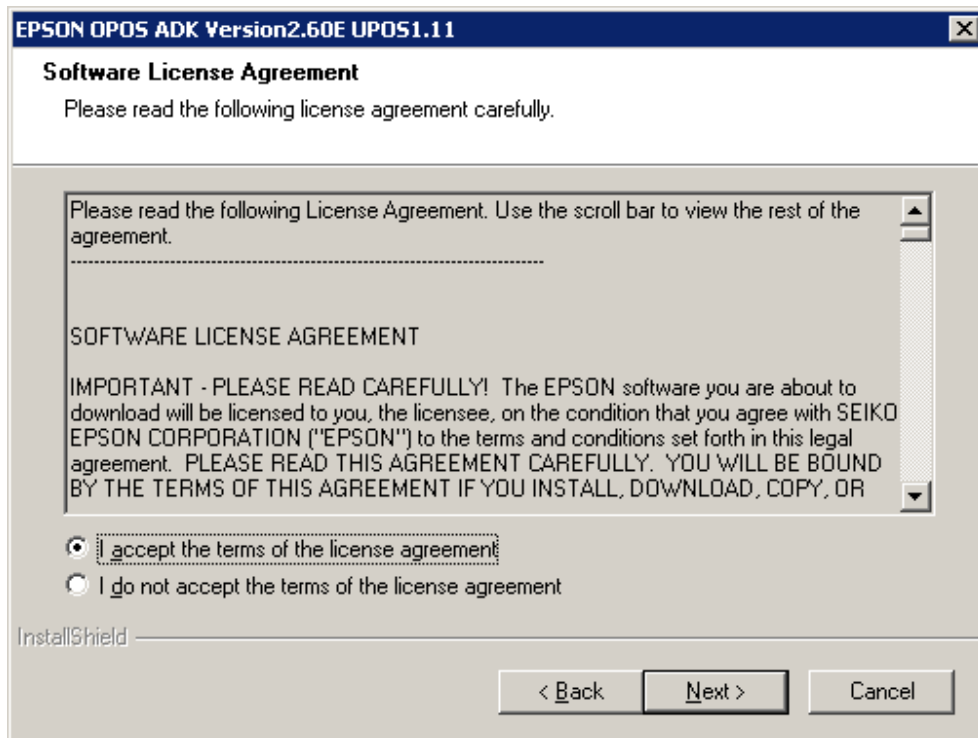


Unpack it into c:\temp, select Unzip and after select Close

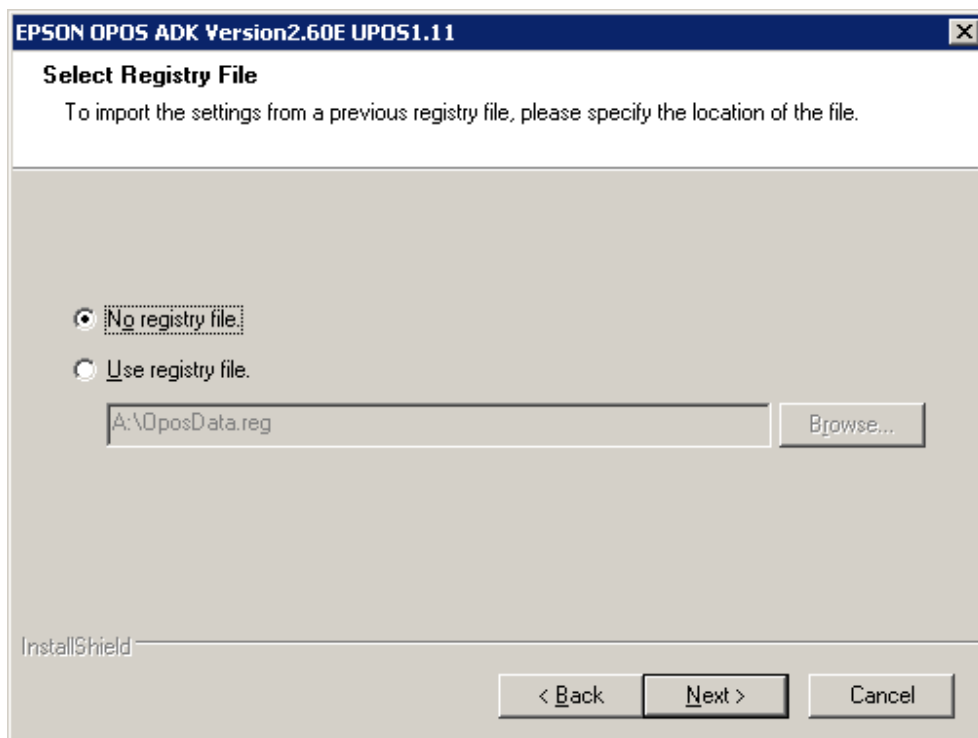
Run: C:\temp\OPOSADK\V260E\disk1\Setup.exe



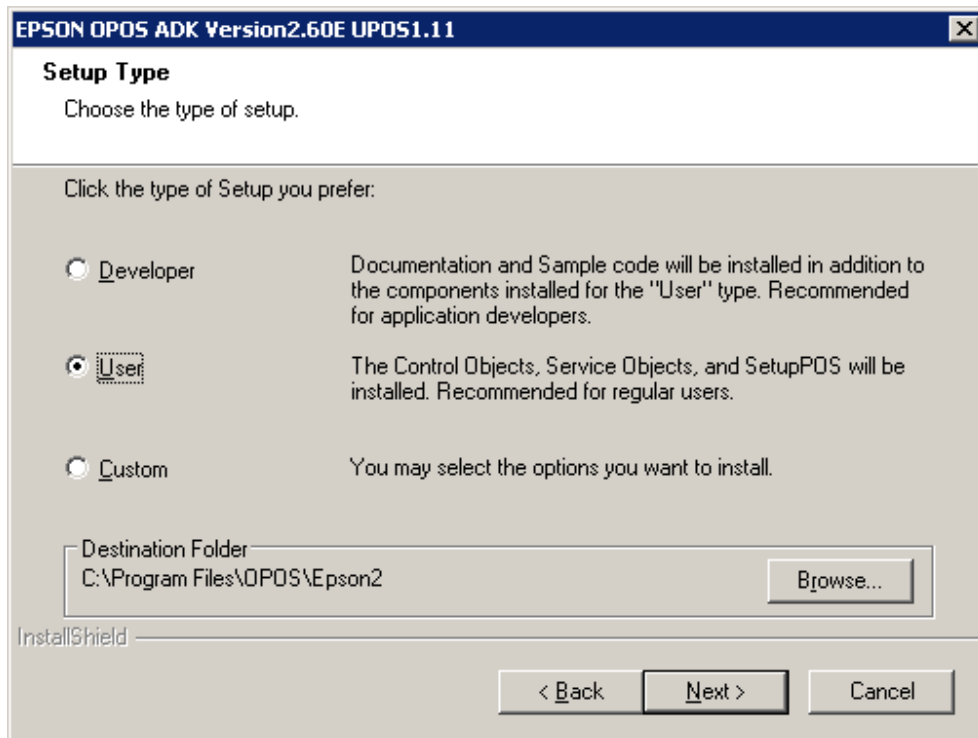
Select NEXT



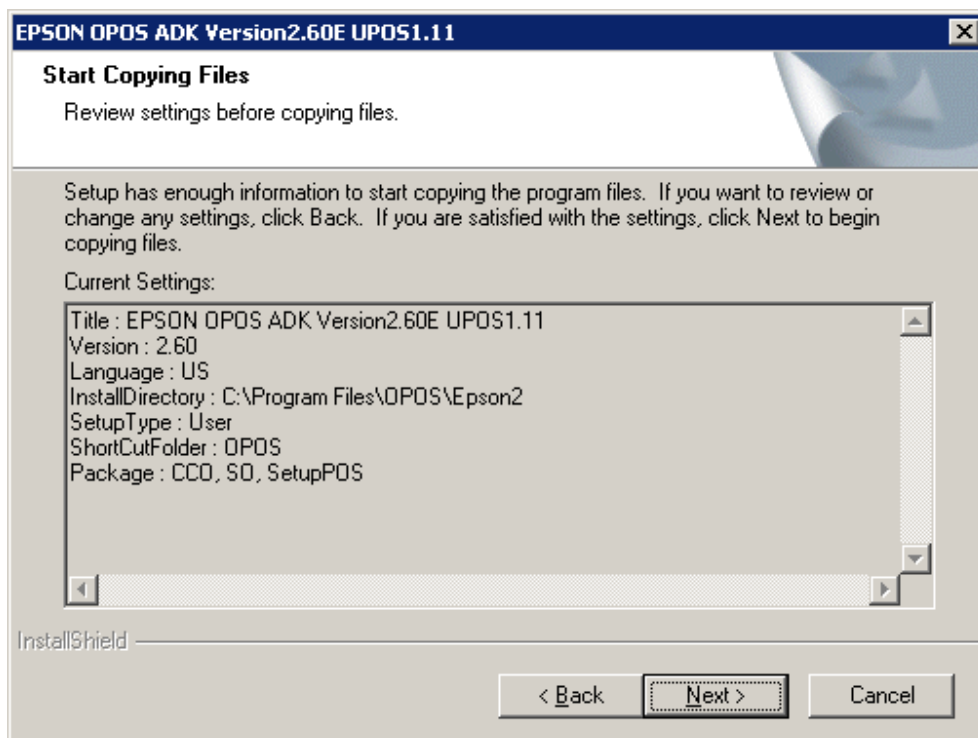
Select "I accept the terms of ...", select NEXT



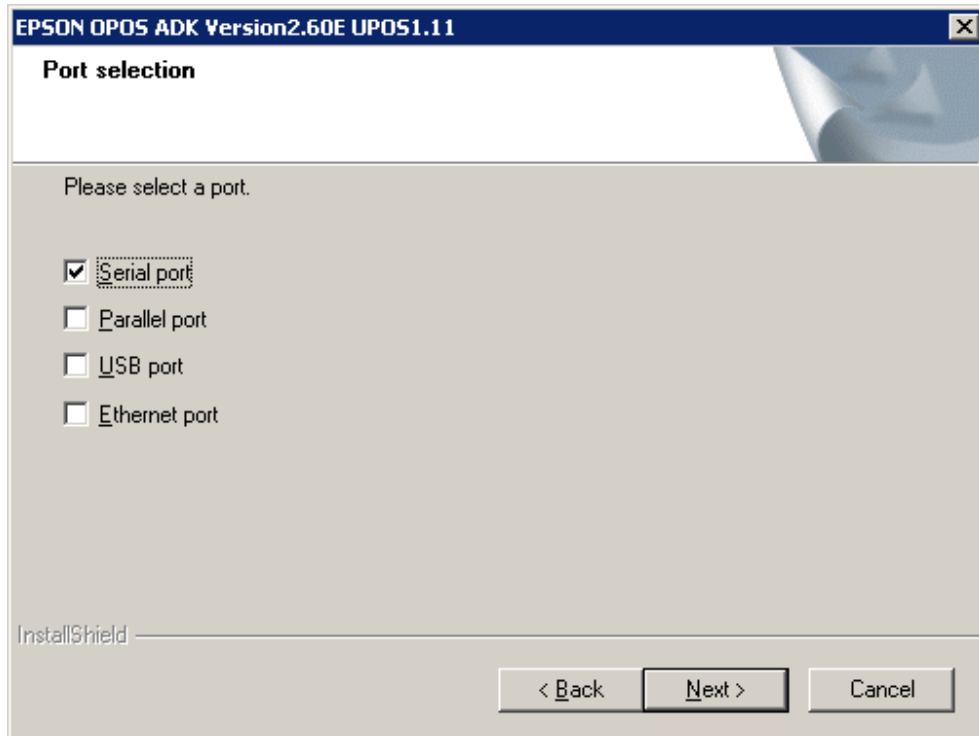
Select NEXT



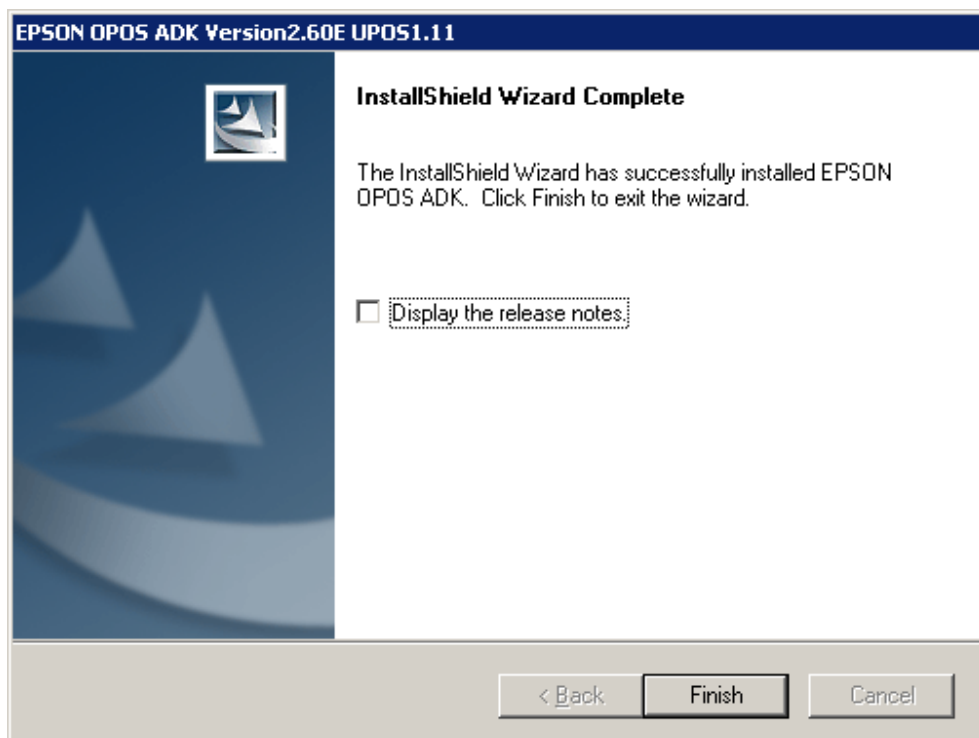
Select "User" and select NEXT



Select NEXT

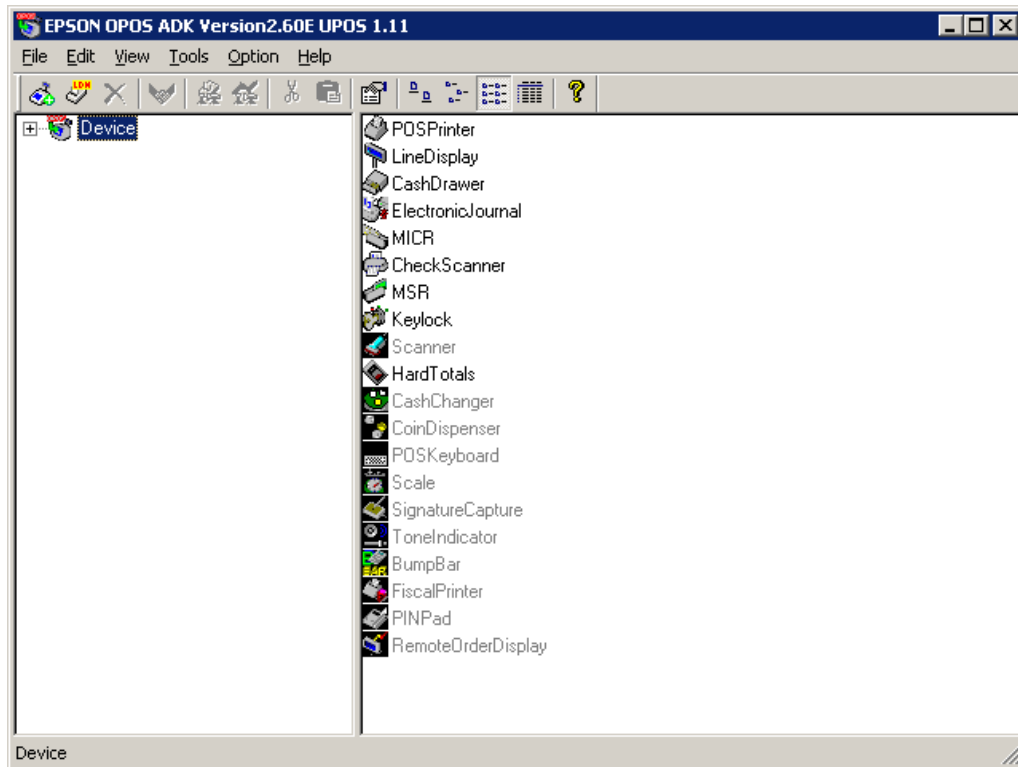


Select your ports you need, select NEXT

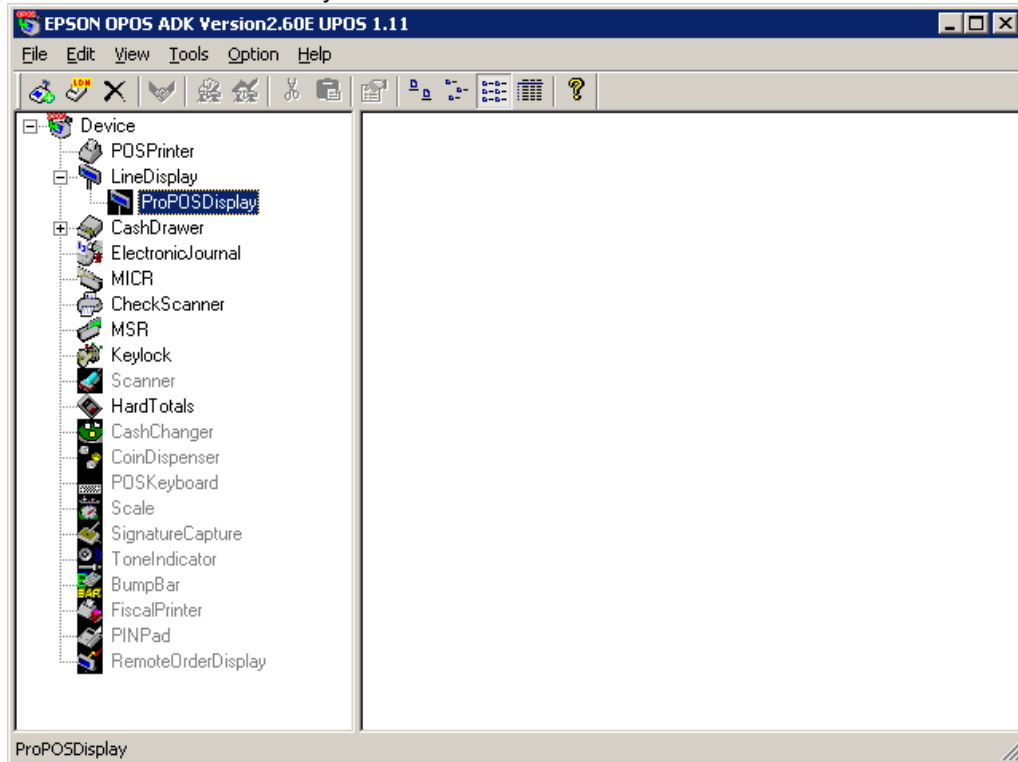


Deselect "Display the release notes" and select Finish

The main Window of EPSON OPOS ADK will appear



Check if the VFD is all ready loaded



You will see the LDN of "ProPOSDisplay" which you defined before with Firich OPOS Setup.

Do not change the Line Display here.

Make your additional setup's for printer, cash drawer and so on.

Close the EPSON OPOS ADK.

Run your application.

That's it.

Novopos AG
20.9.2011 Fe