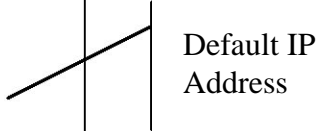

SNBC Ethernet Printer Installation Guide

To change the default IP address of the Ethernet interface, you must connect a PC using the default printer network card IP address.

1. First, get the default printer IP address. Perform a printer self test (power-up while holding feed button).

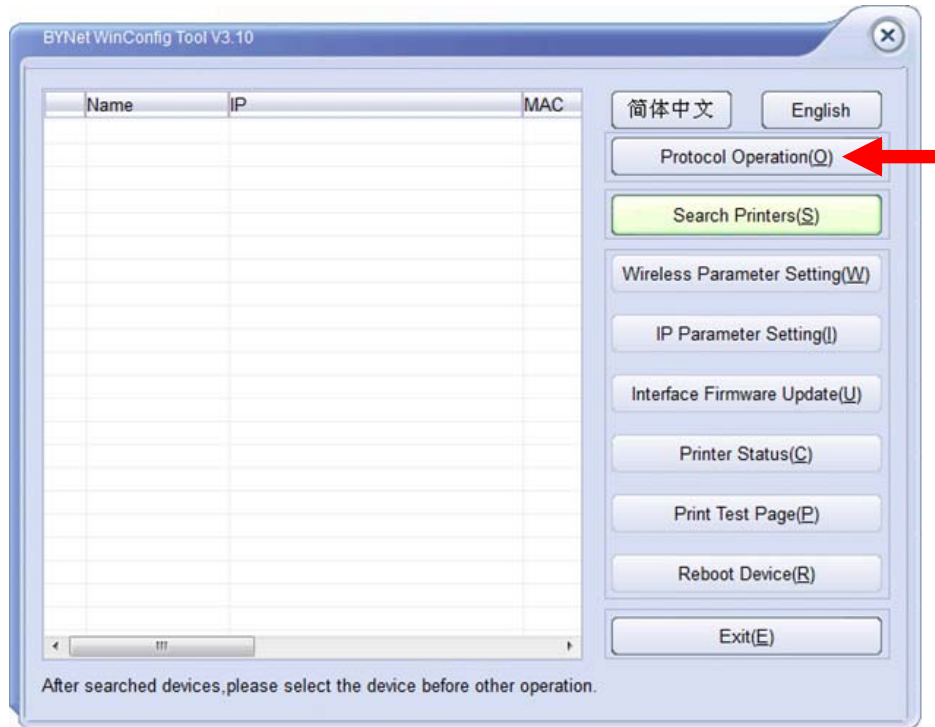
```
Interface is Configuring.....

Communication Interface
Interface Type      :Ethernet
Interface Firmware :FV1.085.04
IP Address          :192.168.10.251
MAC Address        :001341 011B77
SUBNET Mask        :255.255.255.0
GATEWAY            :192.168.11.53
DHCP               :Disabled
```

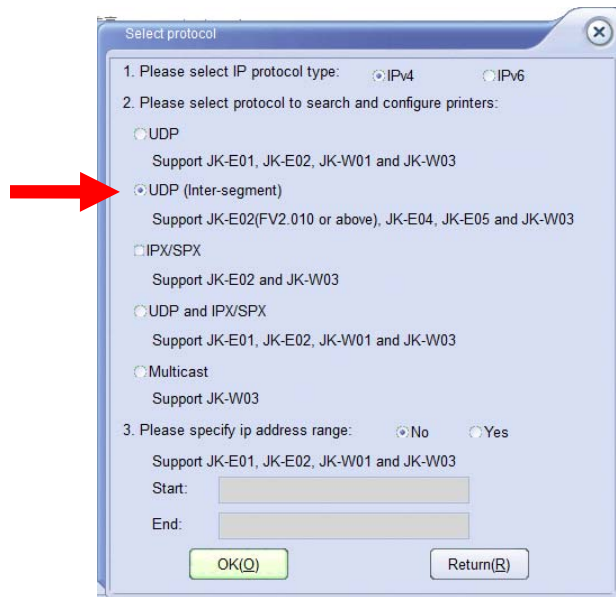


2. Connect the printer to a PC with a cross-over ethernet cable.
3. Download and install the latest version of the SNBC printer utility from the dealer support area of www.crs-usa.com.

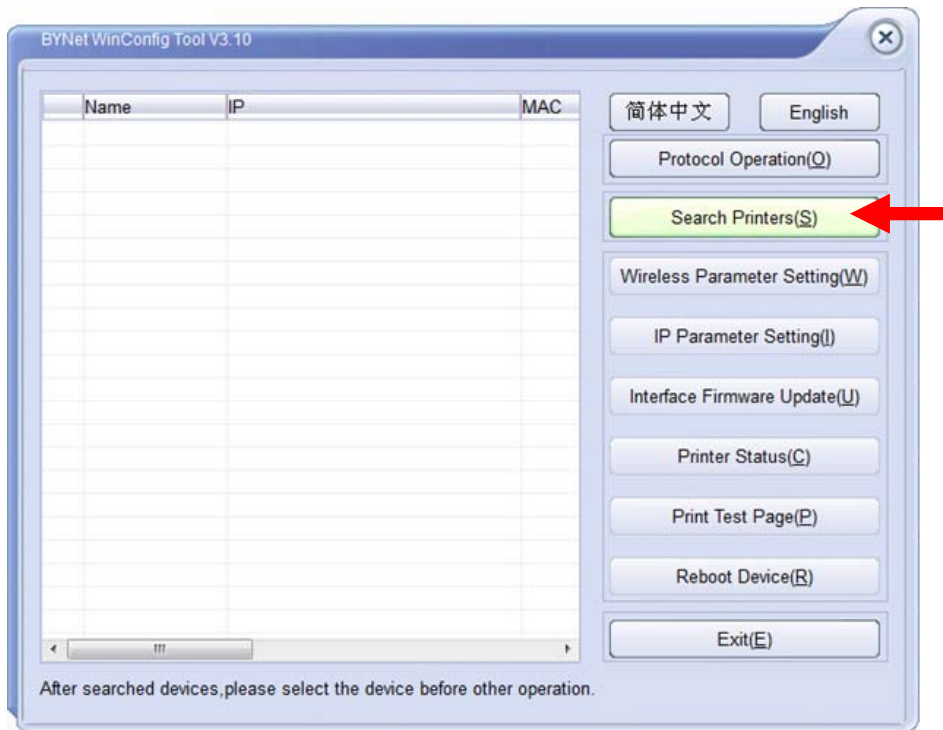
4. Execute BYNetWinConfig.exe to change the default printer network address..



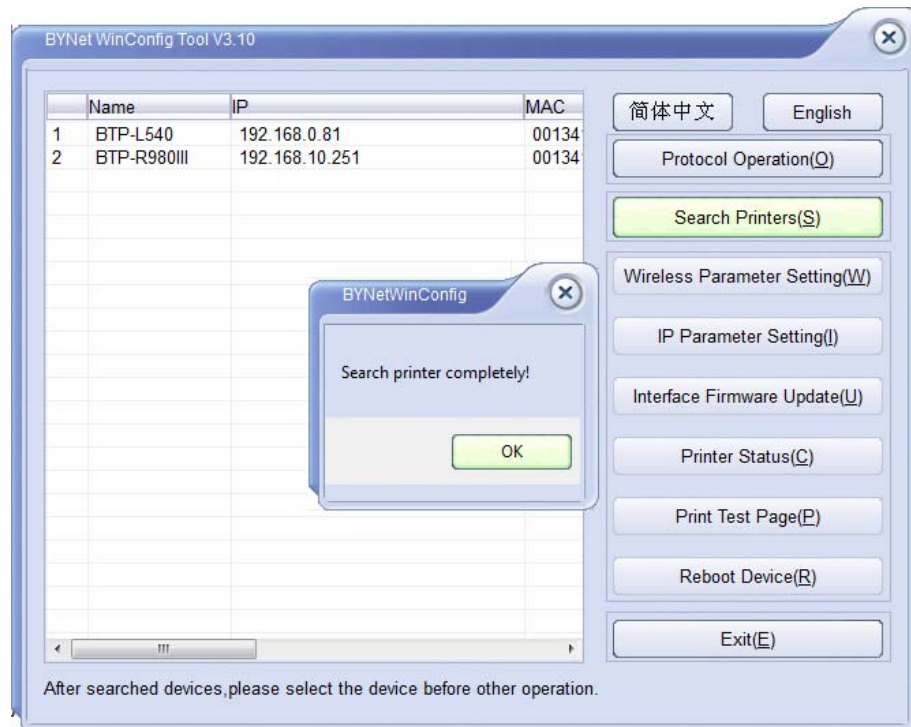
5. Choose the Protocol Operation command button. The **Select protocol** box displays:



- From the **Select protocol** dialog box, select the **UDP (Inter-segment)** option. Select **OK**. The configuration Tool main window returns.

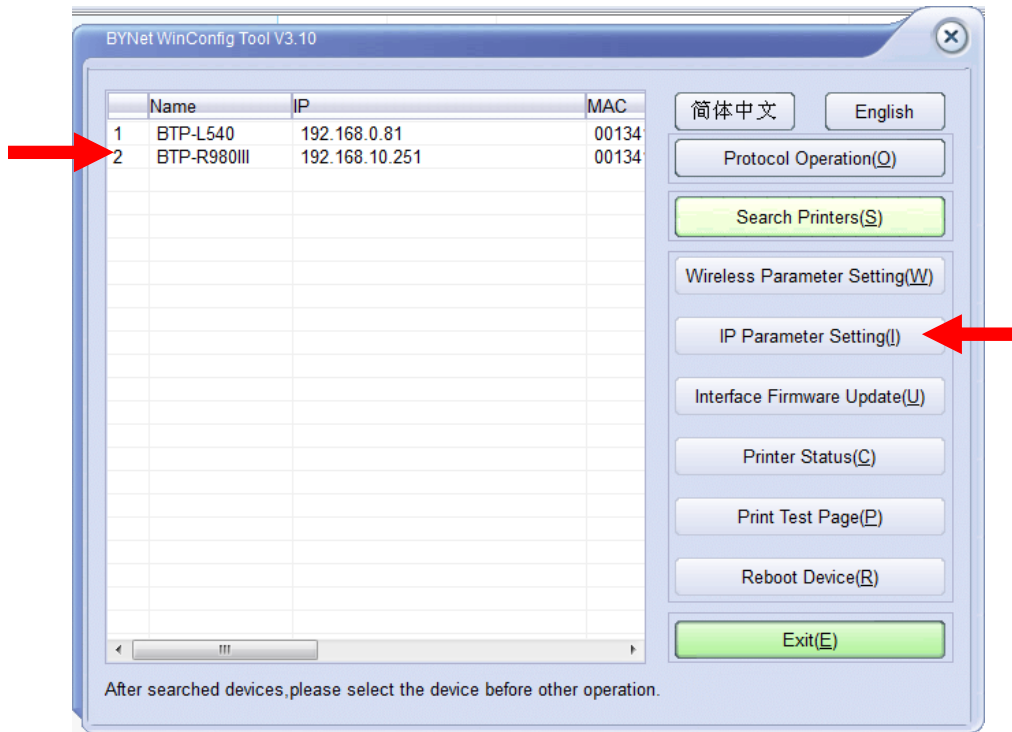


- Click **Search Printer(S)**.

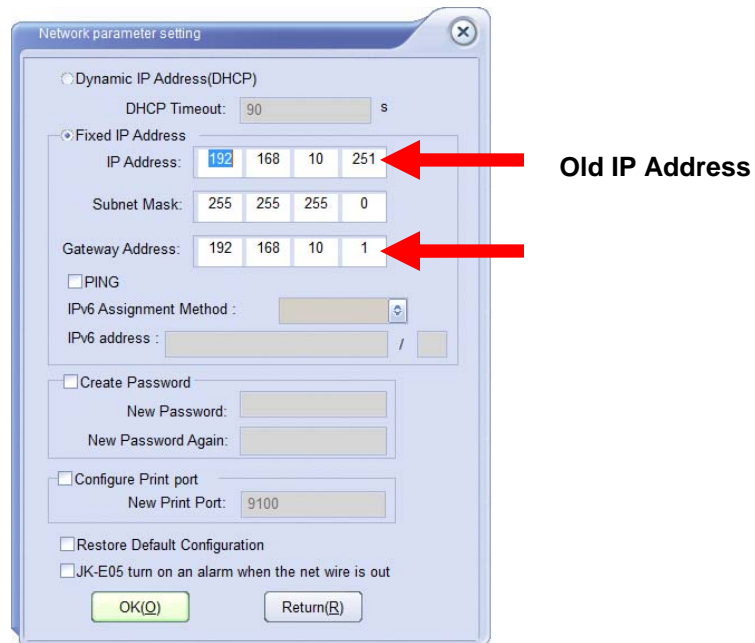


- The connected printers will be listed. Click **OK**.

Note: If printers are not listed at this point, go to “Change the Network Settings of your PC” on page 13. It may be necessary to set your PC to a different range.

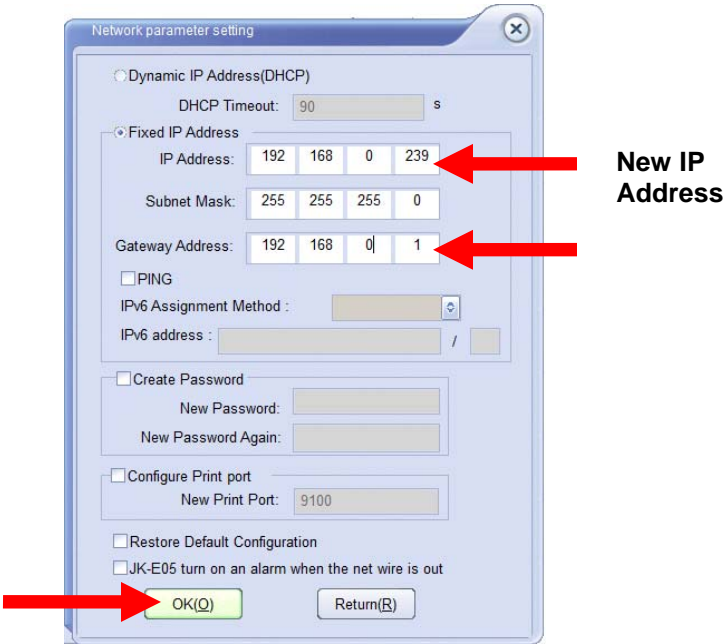


9. To change the IP address, highlight the listed printer and click the **IP Parameter Setting** button. The **Network parameter setting** box displays:

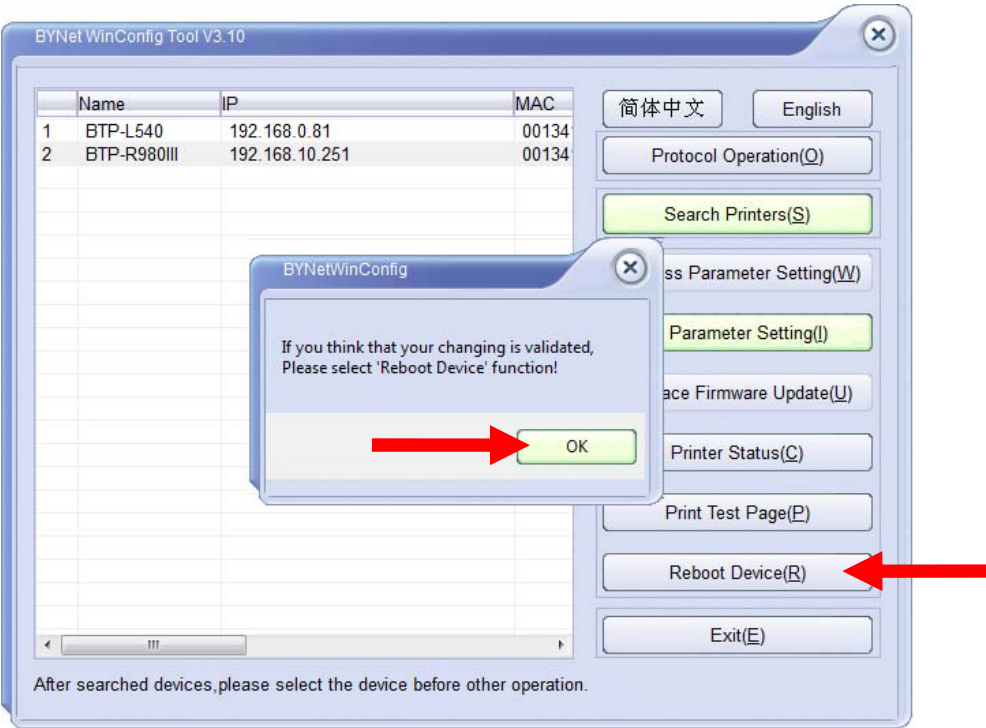


10. Enter the IP address that is within the network range that you are going to use.

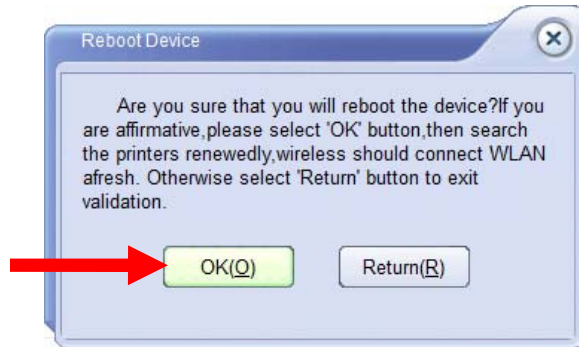
In this example, the network range is 192.168.10.(xxx-254). You must use a unique address for every device in the network. We will use 192.168.0.239.



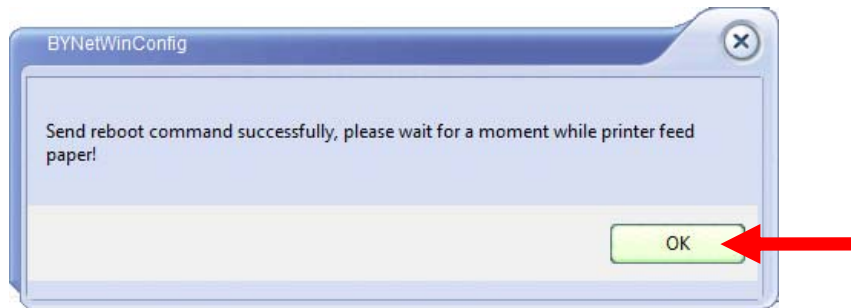
11. Enter this address and click **OK**. The BYNet WinConfig Tool window displays with the Reboot Device message:



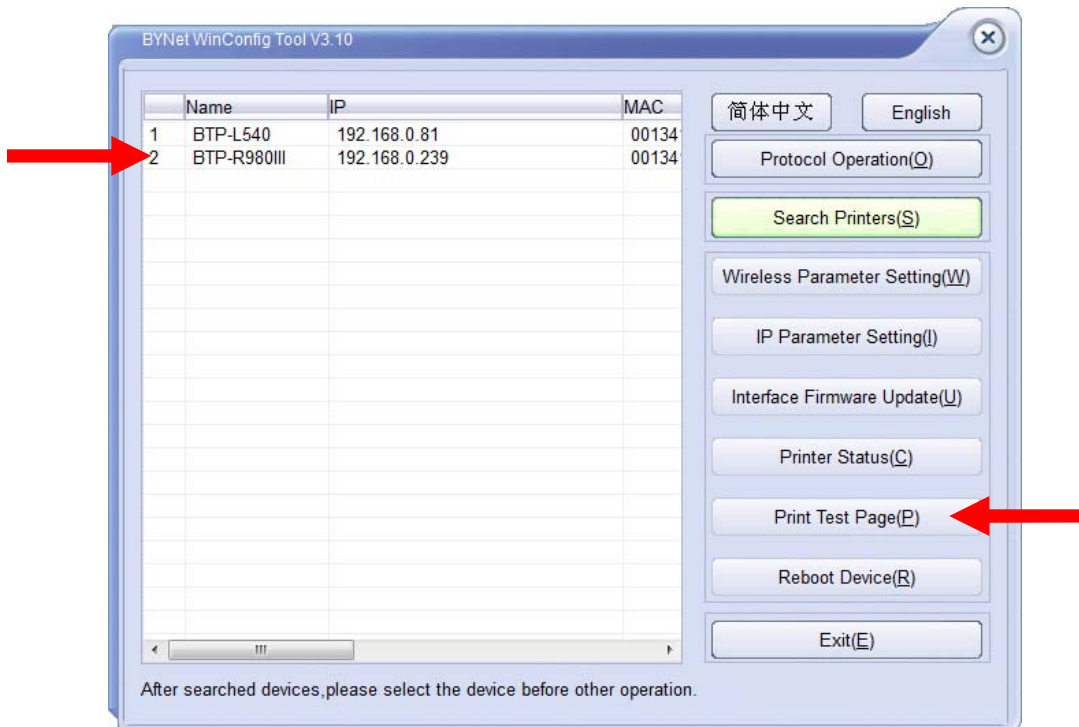
12. Click **OK** and then select **Reboot Device**. A confirmation message displays:



13. Click **OK**. At the reboot successful message click **OK**.



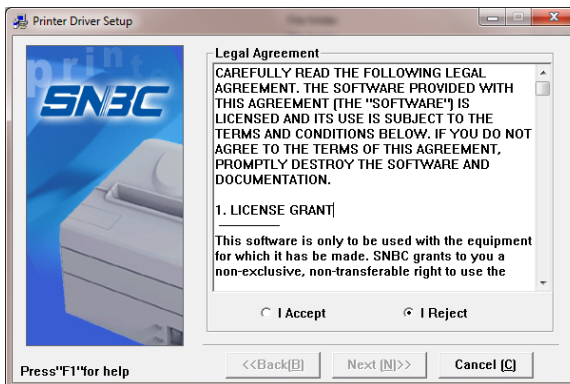
14. With the printer's network IP address now set to the appropriate range, you can connect the printer to your working network. To verify your connection, go to a PC in the network, execute BYNetWinConfig.exe. Click Search the printer.



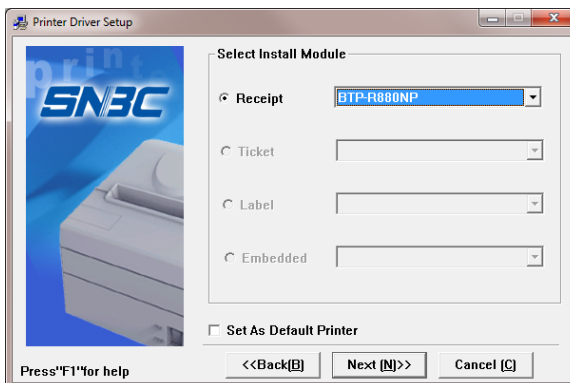
15. Select the printer and click **Print Test Page**.

Load the Windows Driver

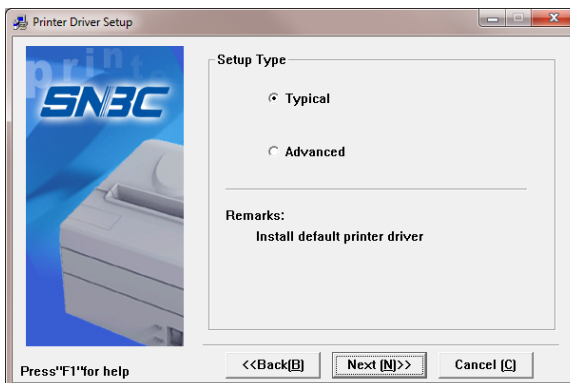
1. Locate and download the driver “**Setup_BTP-R880NP_V1.12.zip**” (or latest version posted on the support page) from the dealer support page at www.crs-usa.com.
2. Unzip and execute Setup.exe. The license acceptance dialog displays:



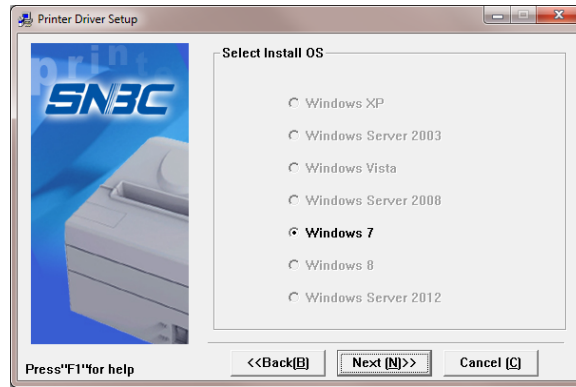
3. Select **I Accept** and then **Next**.



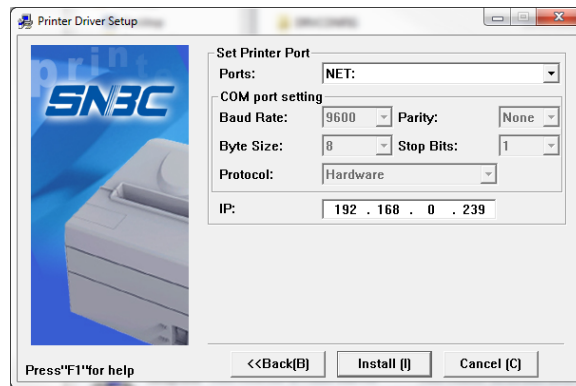
4. Select the Installation Module “**Receipt – BTP-R880NP**” and then select **Next**.



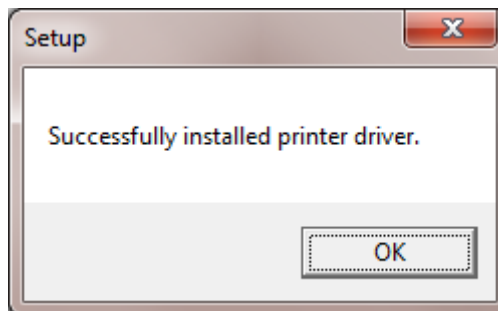
5. Select Typical and then **Next**.



6. Select your Operating System and then select **Next**. The Printer Port selection dialog displays:



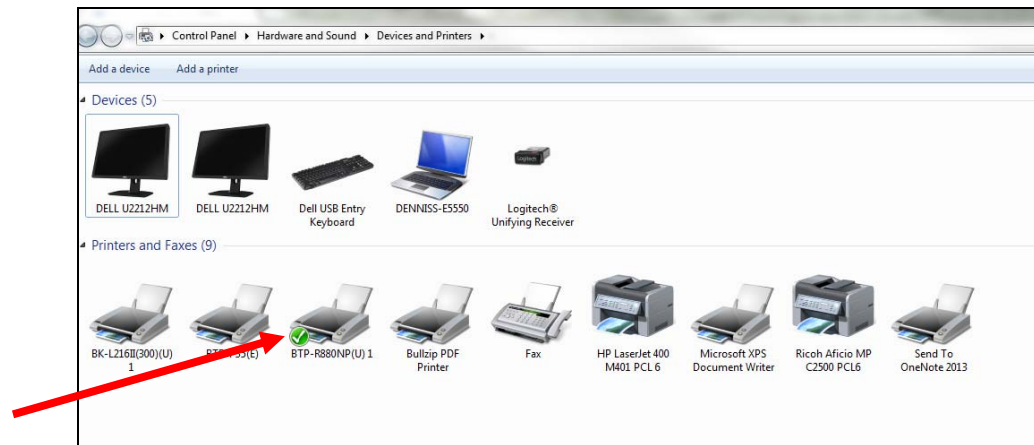
7. At the "Ports" list box select "NET:" and at the "IP:" field enter the IP default IP address of the printer "192.168.0.239".
8. Select **Install**. After installation is complete, the message displays:



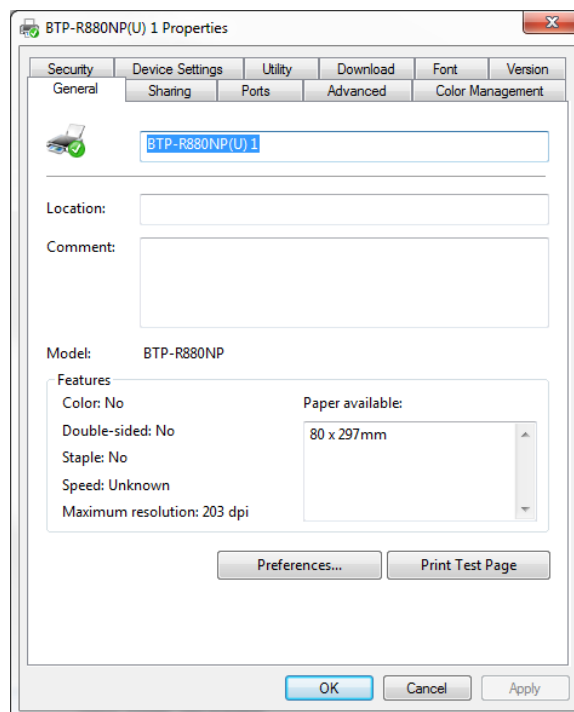
9. Select **OK**. The driver installation is complete.

Install the Ethernet Printer

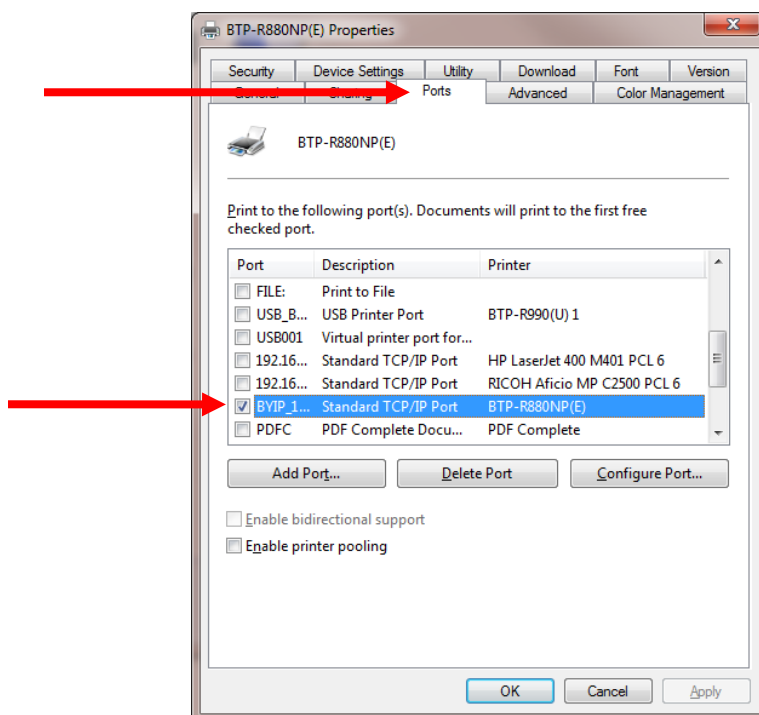
1. At the PC, open your **Devices and Printers** window (Click **Start** and then **Devices and Printers**, or open the **Control Panel** and select **Devices and Printers**.)



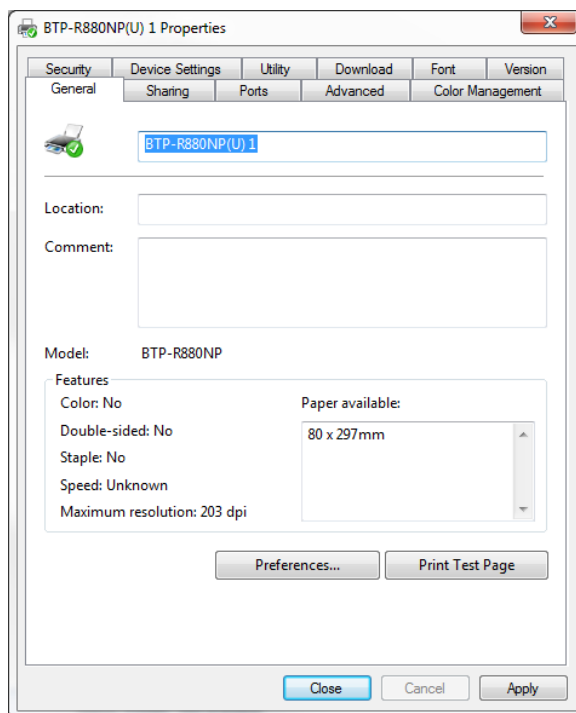
2. Point at the printer you are installing and right click. Select **Printer Properties**. The Properties dialog displays:



3. Select the **Ports** tab.



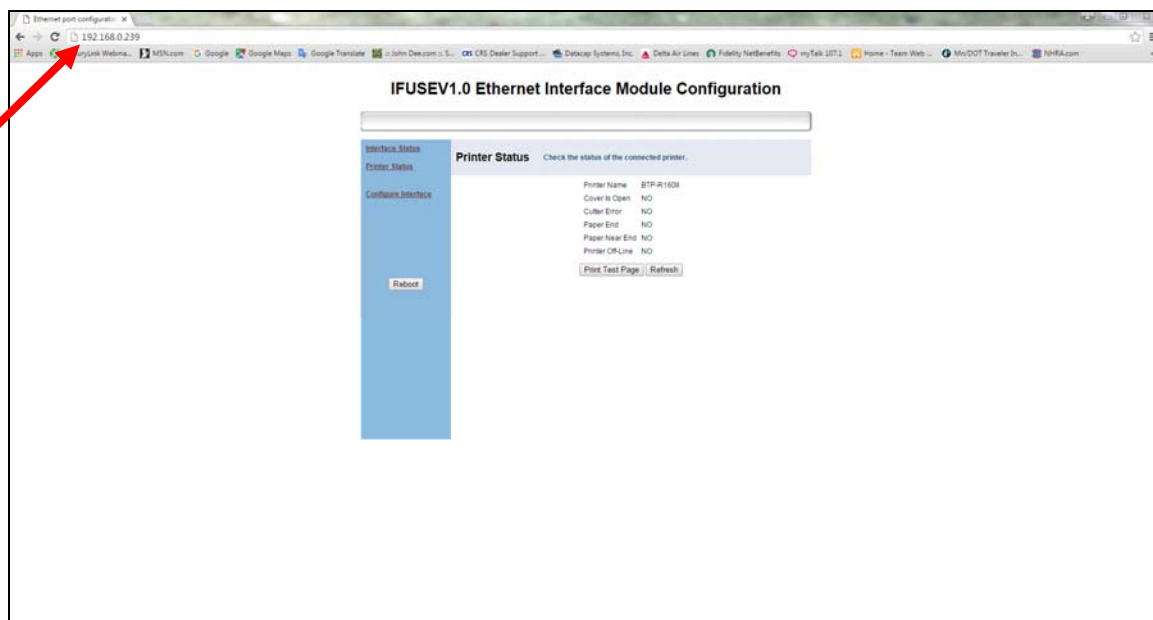
4. Use the Scroll bar to find and select the Standard TCP/IP Port for the printer. Select **Apply**. Return to the General tab.



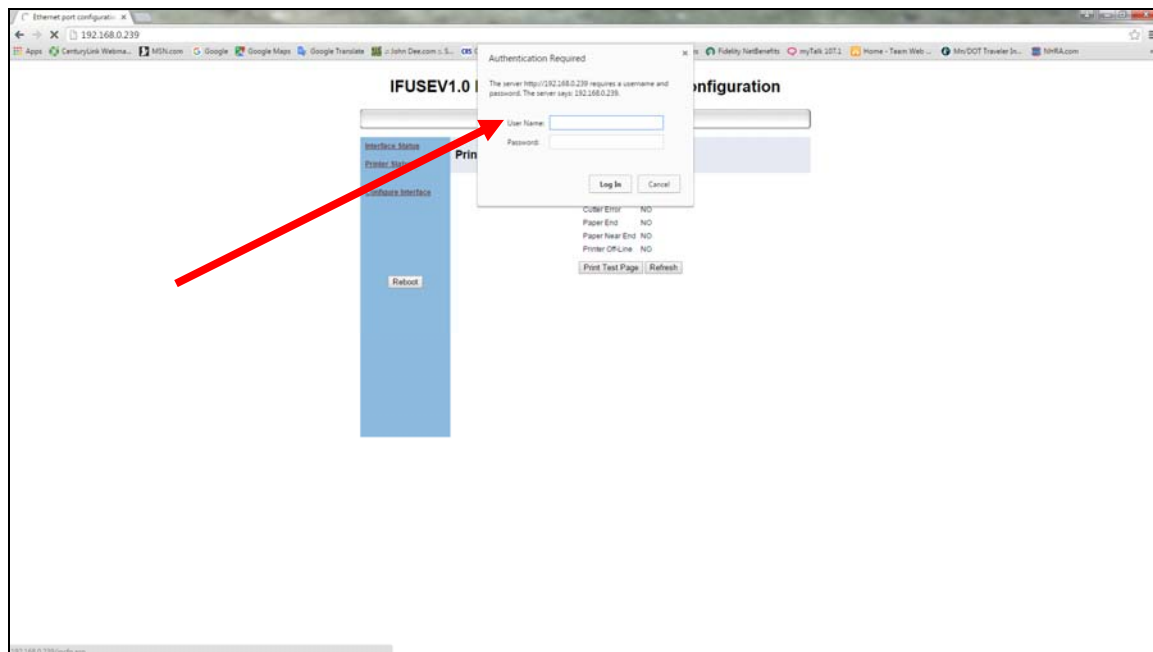
5. Select **Close**.

Configure Ethernet Settings Using a Web Browser

1. Connect the printer to your PC using a network cable. At your PC, open a browser window and enter the printer's IP Address in the URL field.

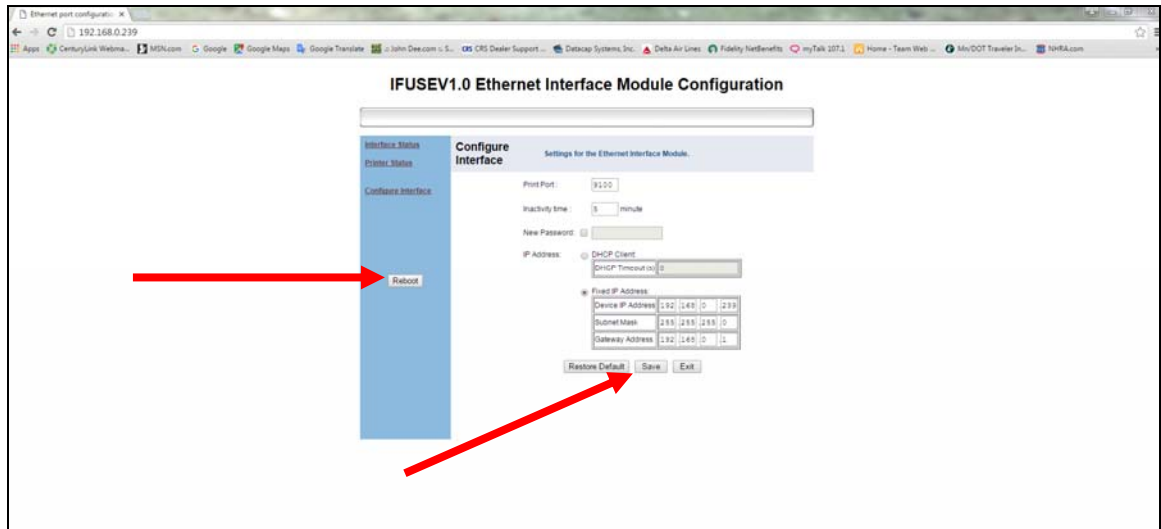


2. The Configuration Module displays.



3. To make any changes, you must enter the User Name/Password. The user name is "admin" (lower case). There is no default password, leave the field blank and select Log In.

4. You can now modify the Port, DHCP/IP Address.

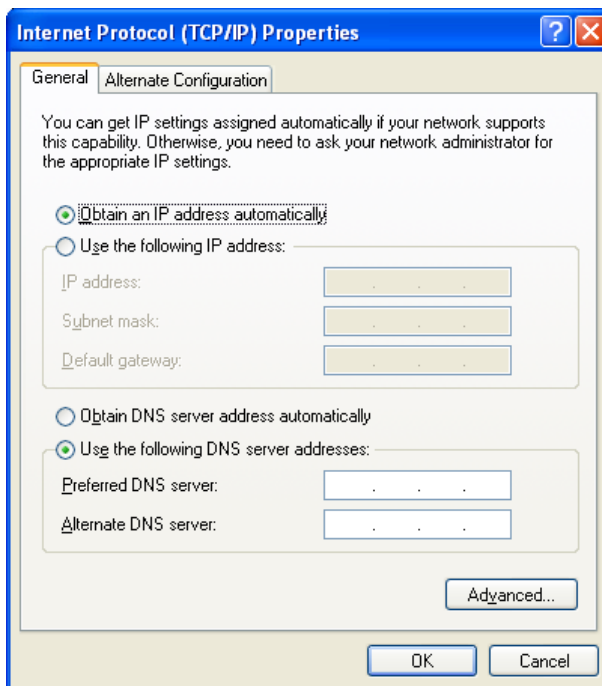


5. Select **Save** and select **Reboot**. You must reboot your PC to reconnect using new settings.

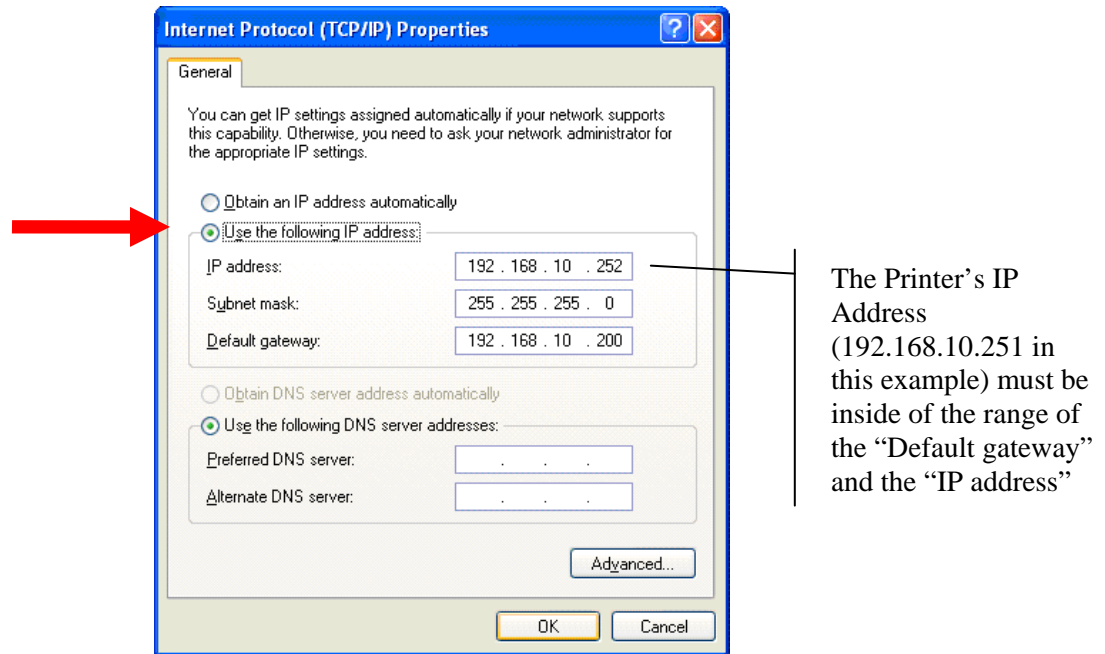
Change the Network Settings of your PC

If you are unable to find your printer from the utility search command, it may be necessary to change the PC IP address of the PC to match the default printer address.

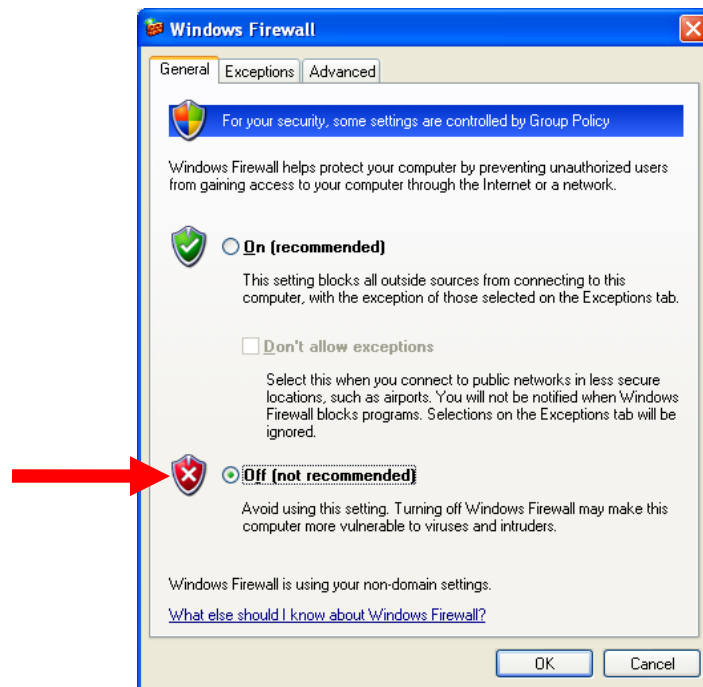
1. From the Start menu of your PC, choose **Settings**, then **Network Connections**. From the Network Connections dialog, right-click on Local Area Connection and select **Properties**.
2. Select Internet Protocol (TCP/IP) and click the Properties button. Most office PCs will be set to “Obtain an IP address automatically”. *Make a note of the current setting before changing.*



3. Check the “Use the following IP address” option button and enter an IP address that is in the same range as the address printed in the printer self test. (Change the last 3-digits of the IP address.)



4. Click **OK** and close the Network Connections dialog.
5. Next you may have to turn off the Windows Firewall. Choose **Start, Control Panel** and then **Windows Firewall**. Select “Off (not recommended)”.



6. Click **OK**. Return to the BYNetWinConfig utility and attempt your printer search again.