

Protech Utility Tool Instruction

Rev.1.0



Protech Utility Tool is applicable to the following operating system:

- Microsoft Windows 10 (32 bit/64 bit)
- Microsoft Windows 8 (32 bit/64 bit)
- Microsoft Windows 7 (32 bit/64 bit)
- Microsoft Windows XP (32 bit)

Driver version	V1.0.0.3
-----------------------	-----------------

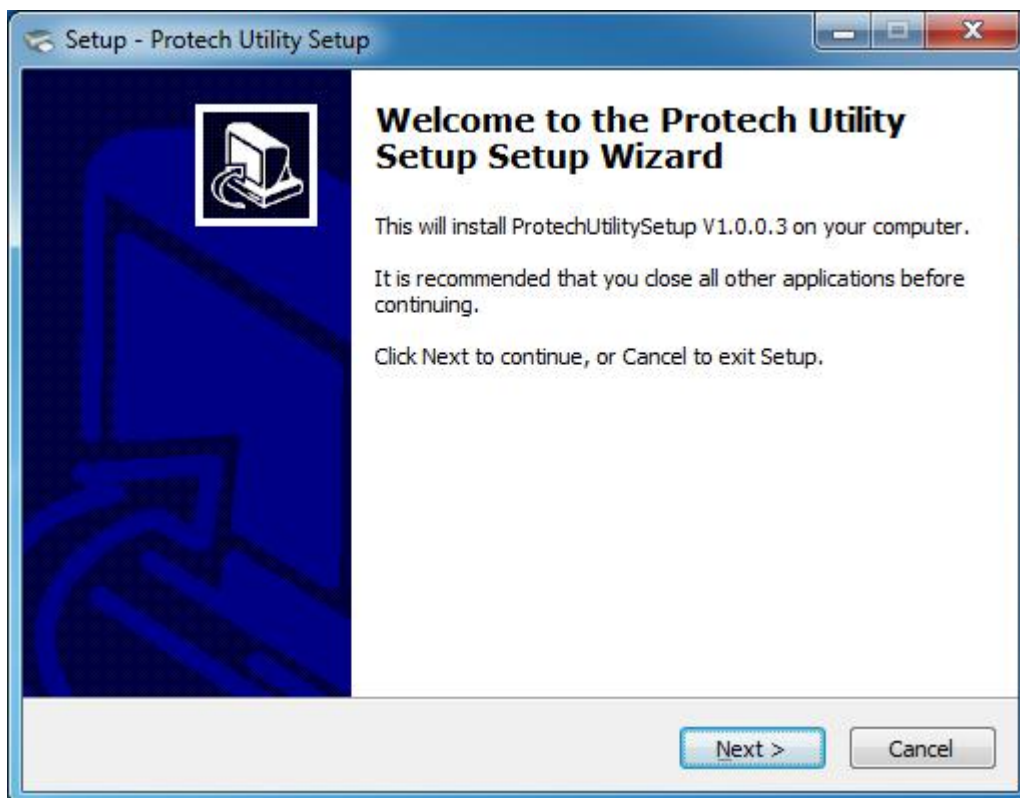
1. Installation of Protech Utility Tool

1. Open the installation package.

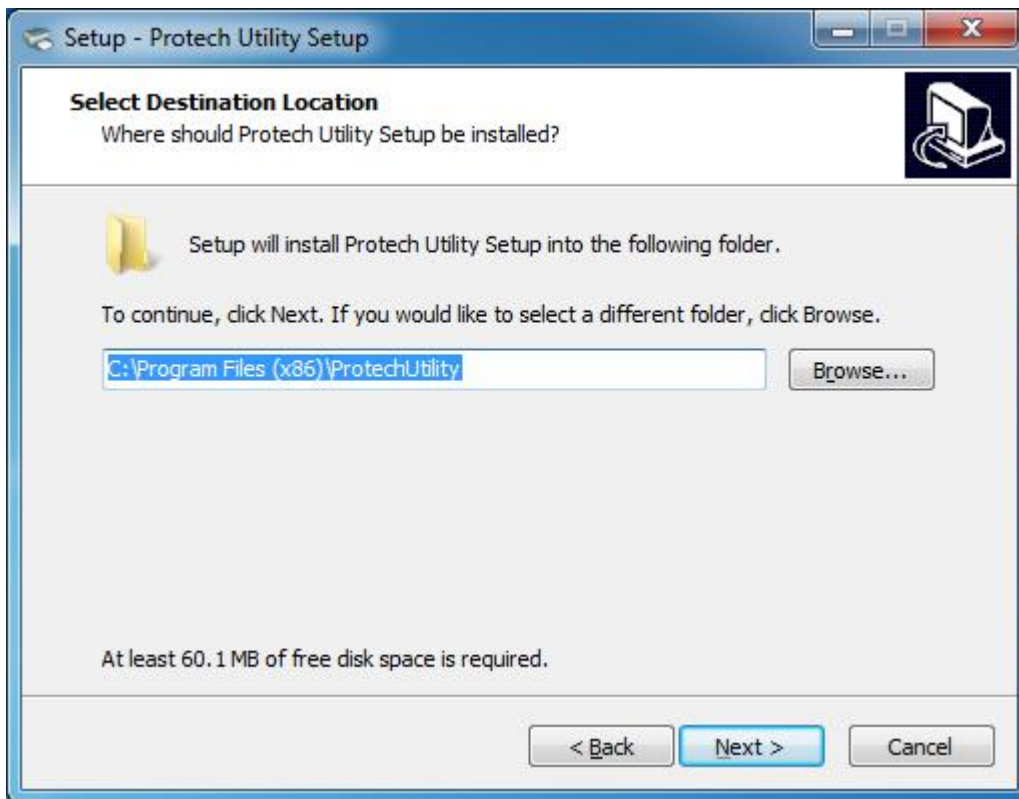
2. Choose "English" and click "OK".



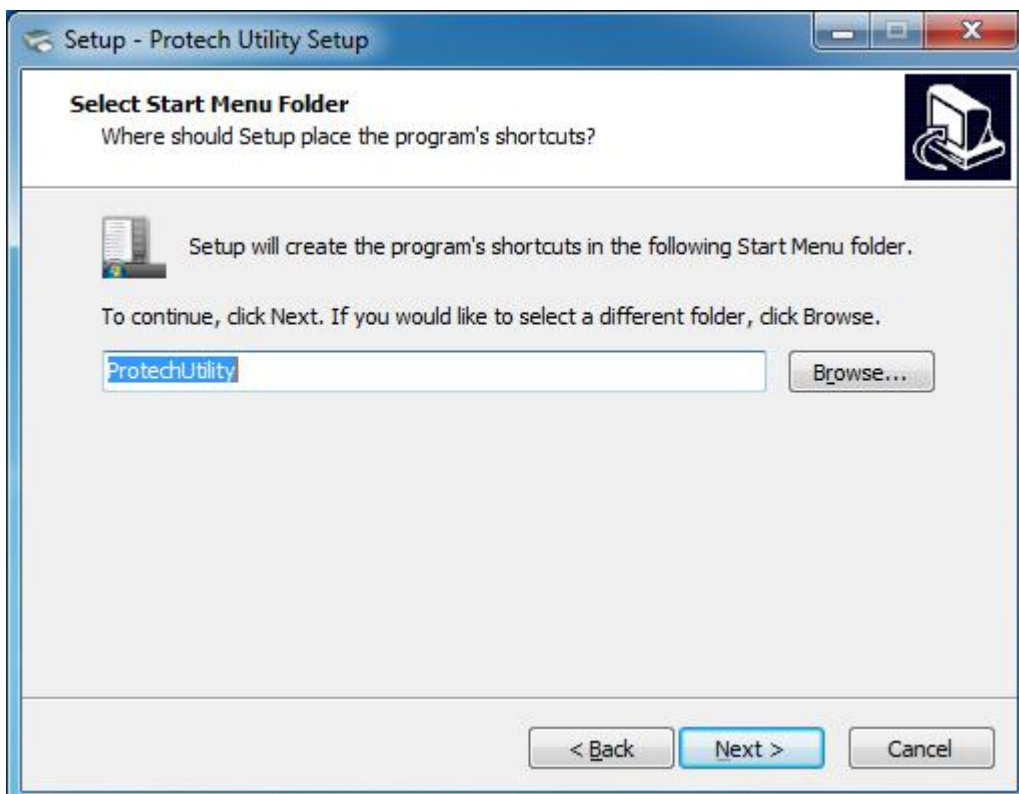
3. Click "Next".



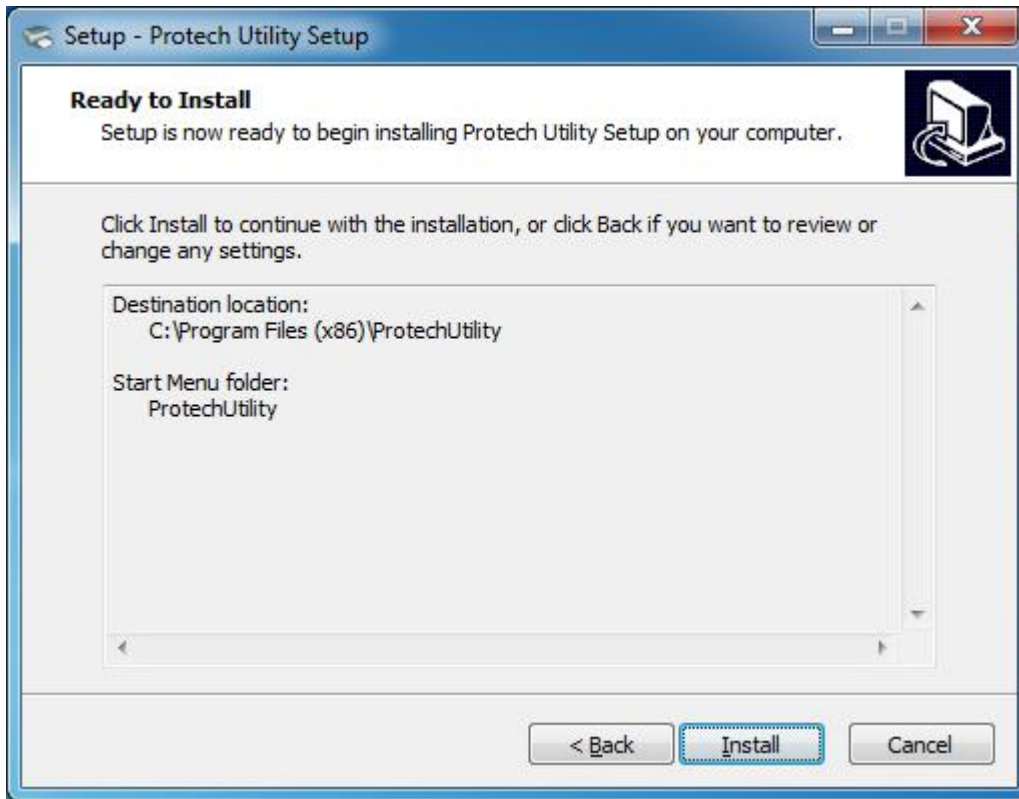
4. Select destination location to install the Protech Utility Tool. Click "Next".



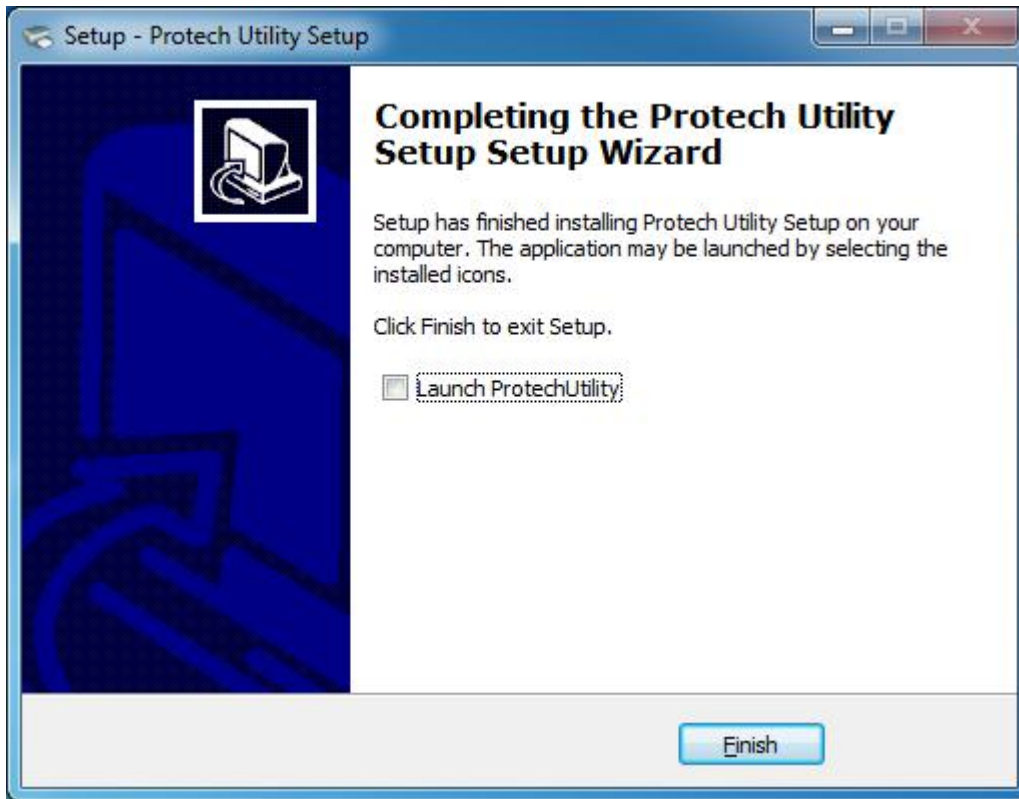
5. Select start menu folder. Click "Next".




6. Click "Install".



7. Click "Finish". Protech Utility Tool installed successfully.

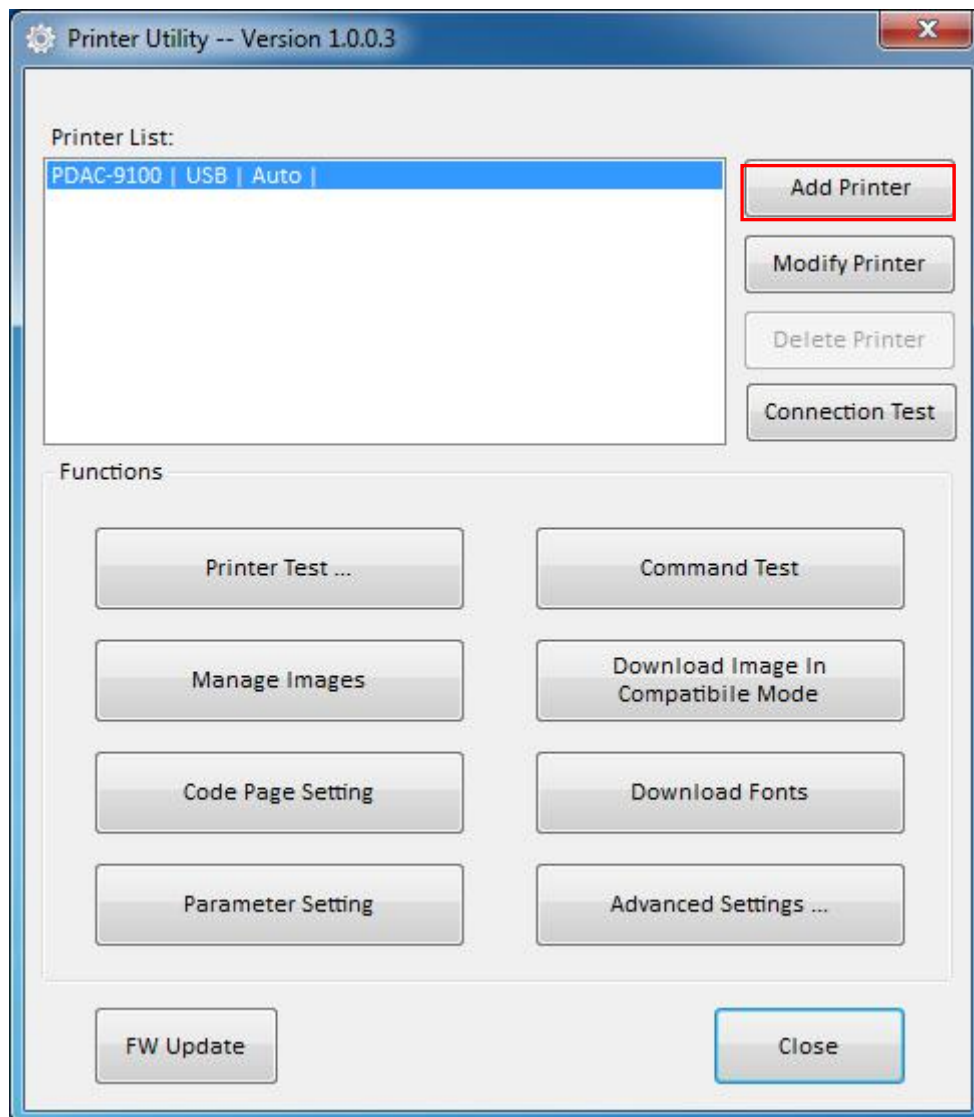


2.Using Protech Utility Tool

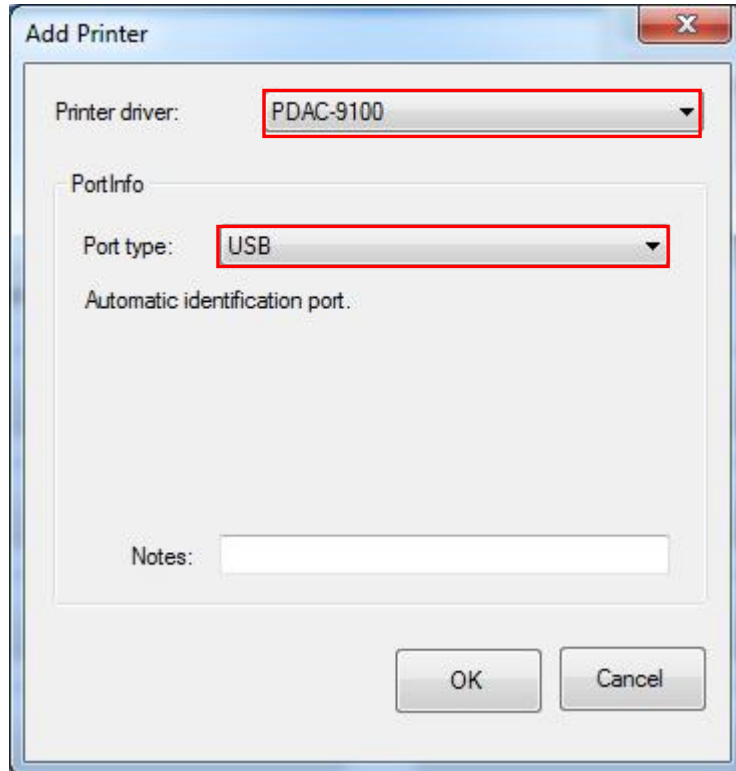
 Warning:In different operating system,screen has slight difference.Please operate it according to the tips. Take Protech (Windows 7) for example.

● Add printer

1.Click "Add Printer".

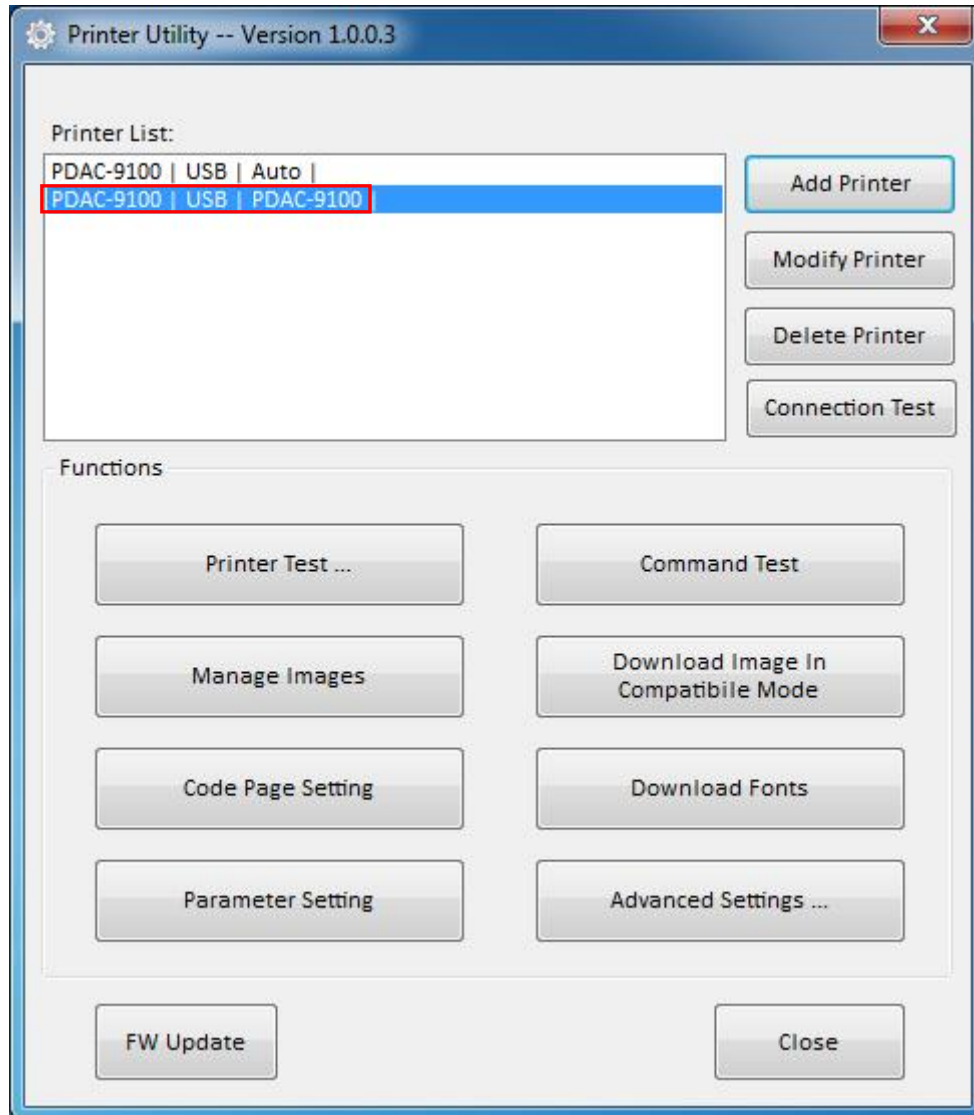


2. Choose the right printer type and port. Then click "OK". (Take PDAC-9100 for example.)

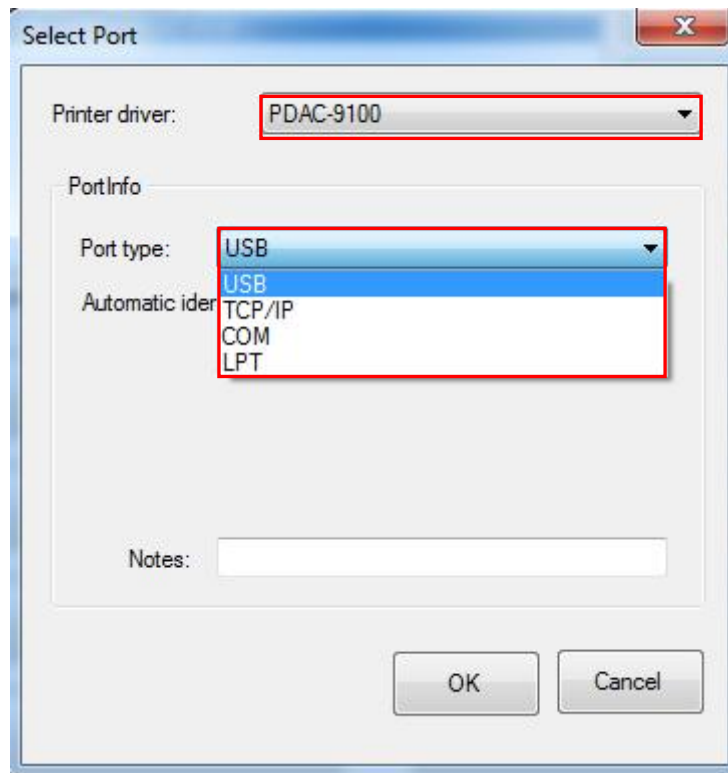


- **Modify printer**

1. Choose the printer you want to modify in the list. Click “Modify Printer”.



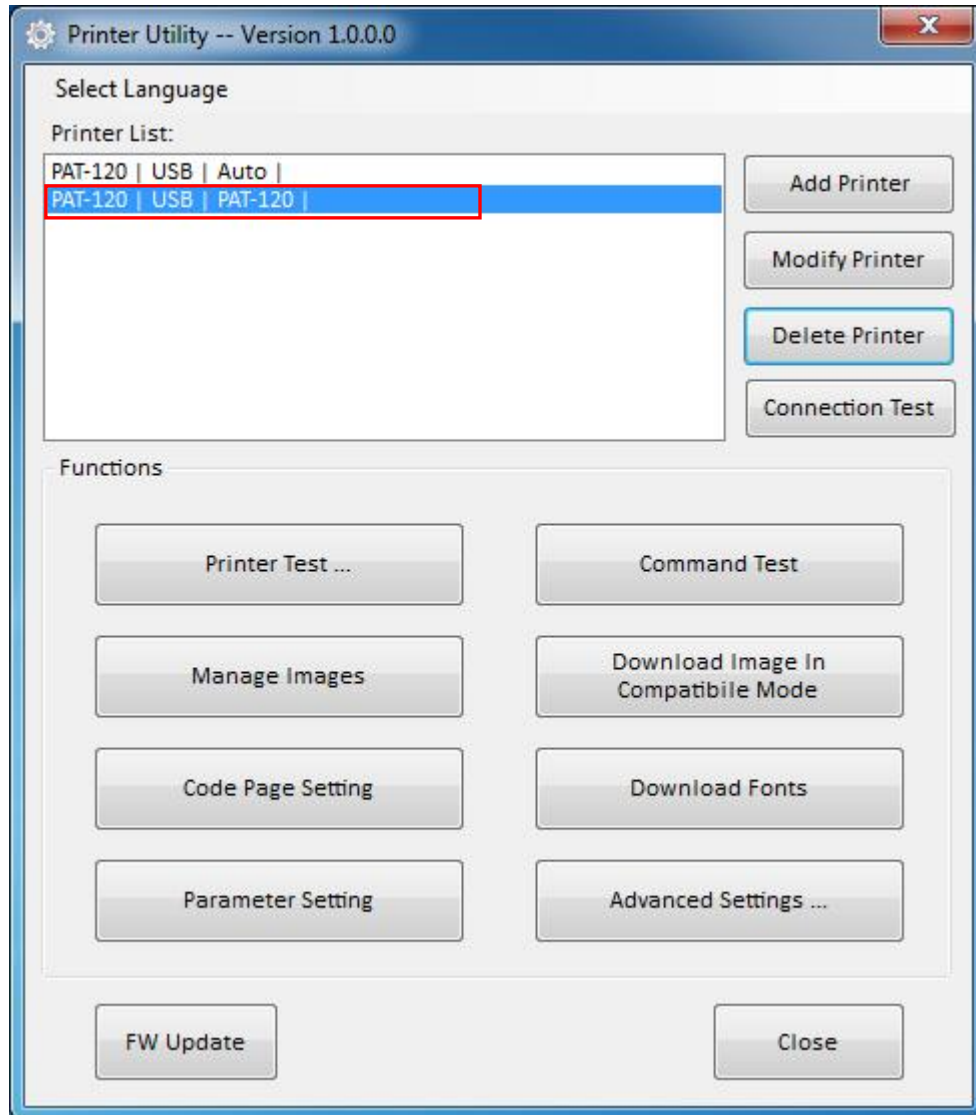
2. Choose the new printer and new port. Then click "OK".



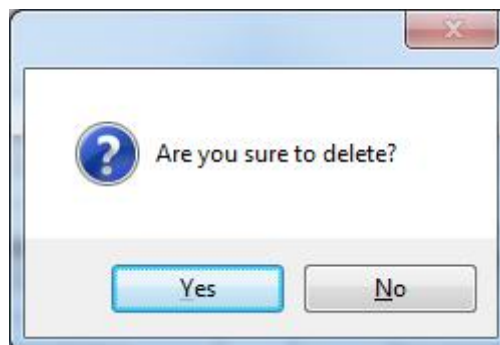
3. The new printer added successfully.

● Delete printer

1. Choose the printer you want to delete in the list and click “Delete Printer”.



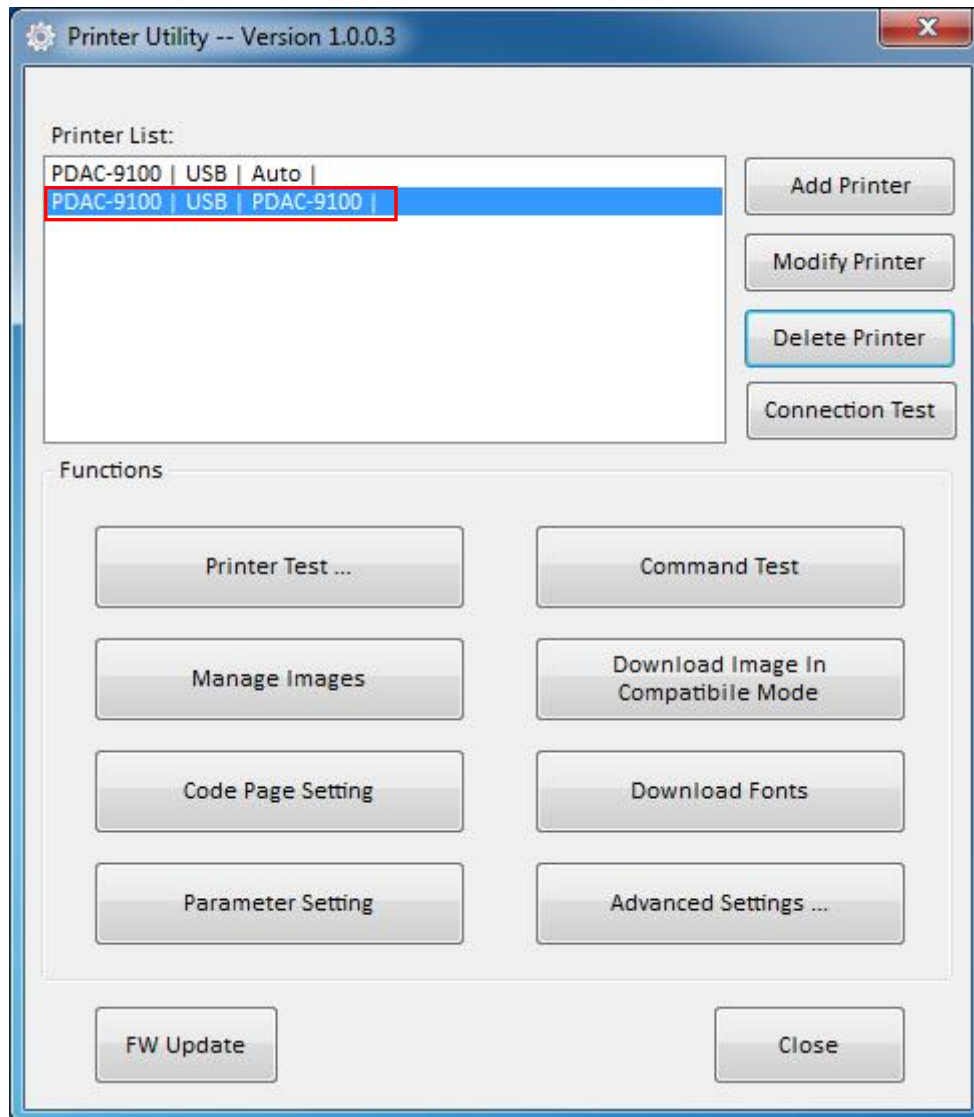
2. Click “Yes”, then the printer is deleted.



● Connection Test

Make sure printer is connected with computer and power on.

1. Choose the printer. Click “Connection Test”.



2.If the connection is successful, it will appear the following window. If the connection is unsuccessful, please connect the printer with computer.

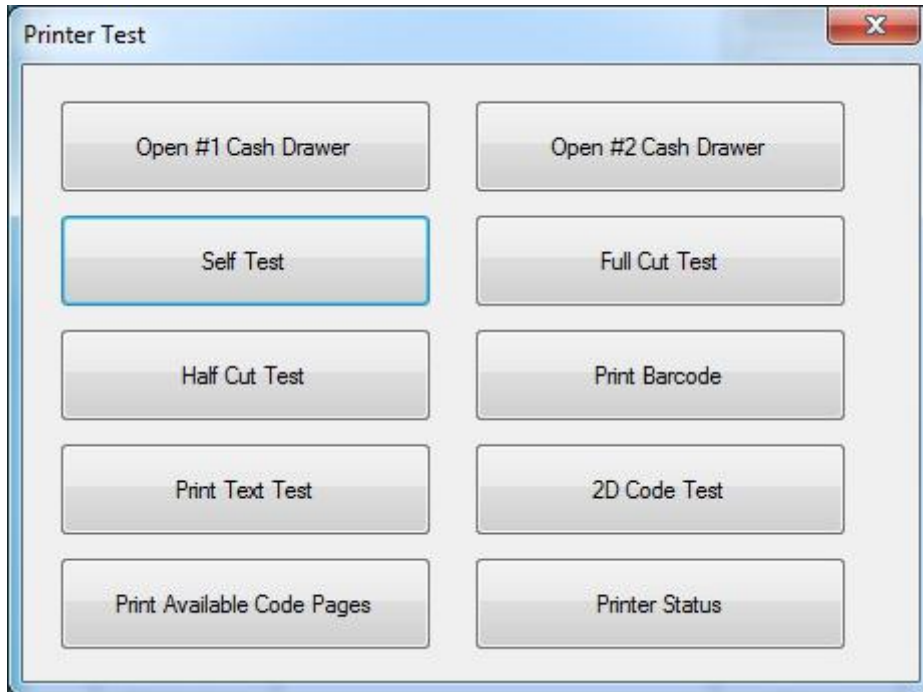


Note:

1. Make sure printer is connected with computer and power on.
2. Make sure printer is loaded paper.
3. Before using the following function, carry out the "Connection Test" first.

- **Printer Test**

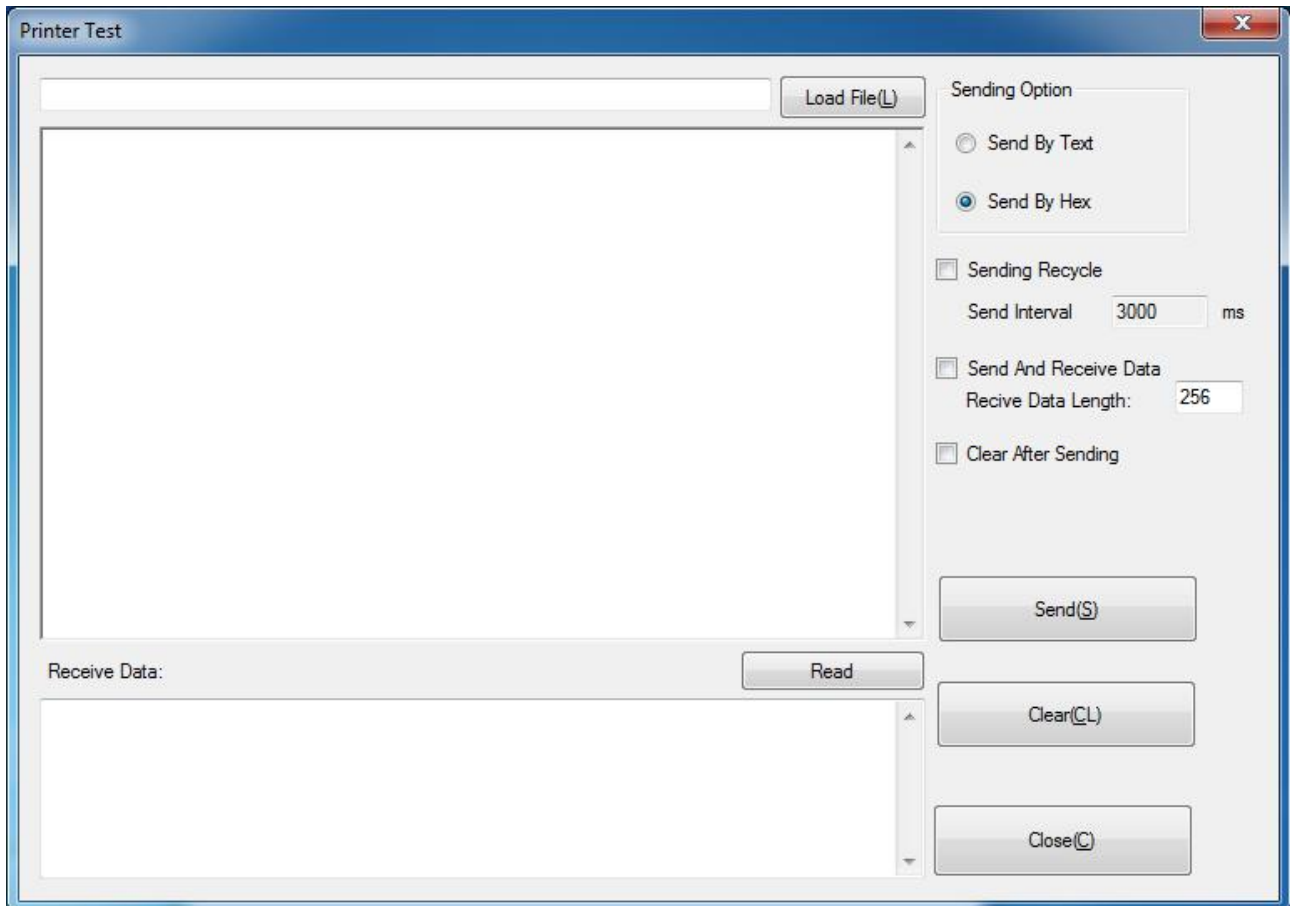
Printer Test contains the below items. Click the button and printer will execute the appropriate action.



- **Command Test**

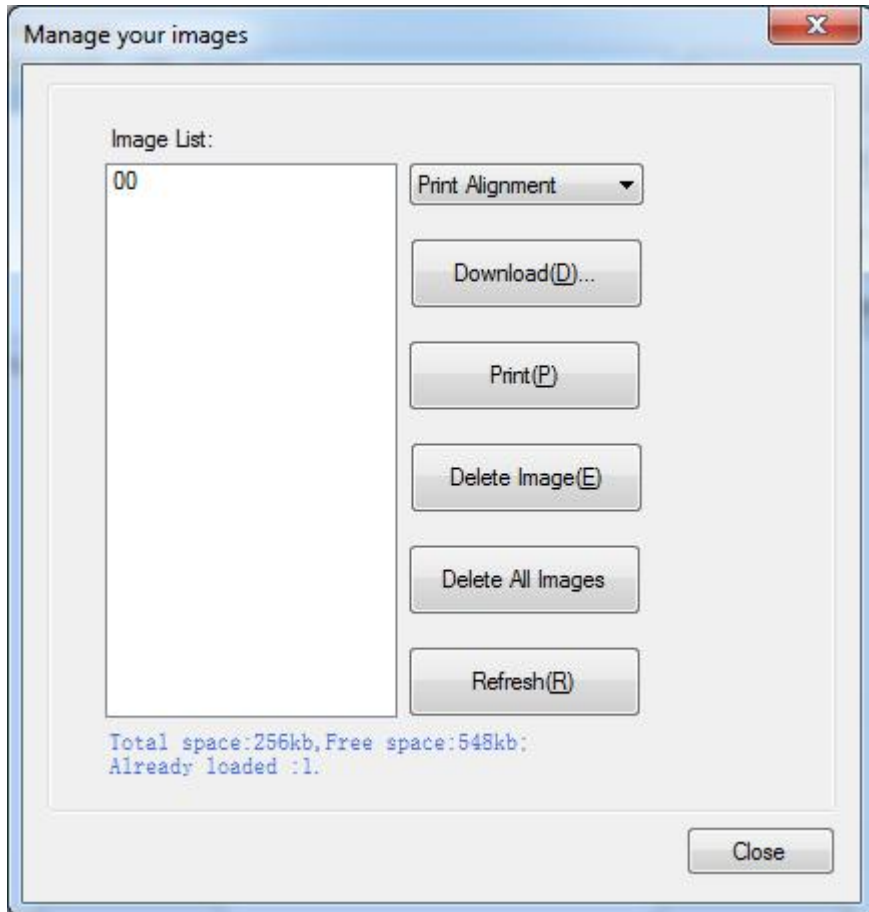
In Command Test, you can send commands to printer. Choose the Text or Hex data.

Choose a file from the existing files or input the command in the input box.

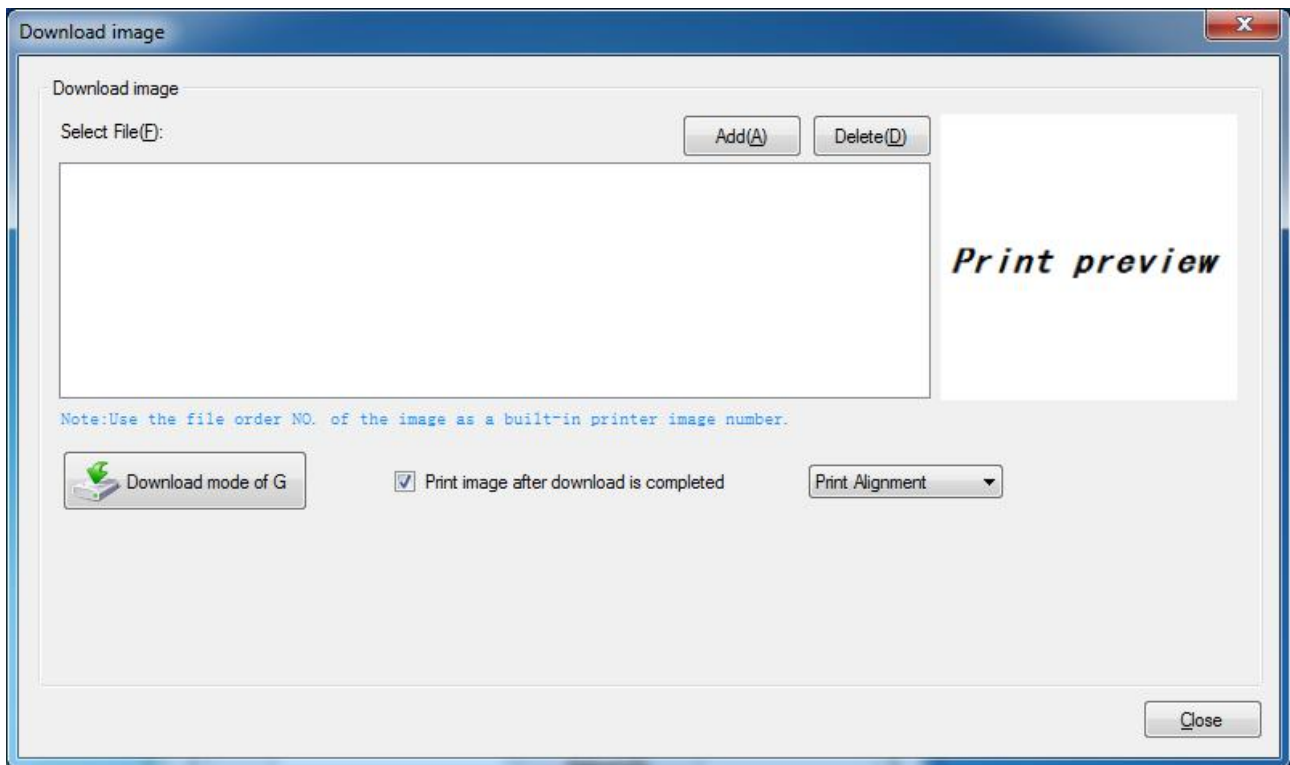


- **Manage Images**

Choose a image in image list. Click “Print” to print it or click “Delete Image” to delete it.



Click “Download” to download a new image into the printer.



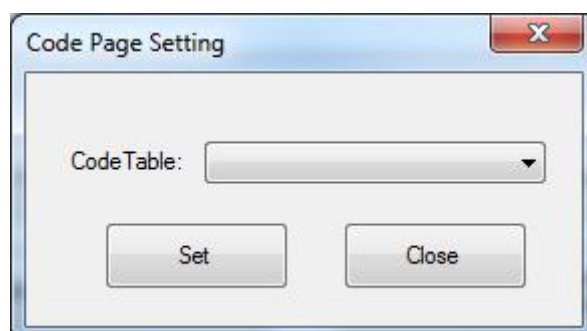
Note: The total memory is 256K. The each bitmap should be less than 40K.

- **Download Image In Compatible Model**

Download image in compatible model which uses old command.

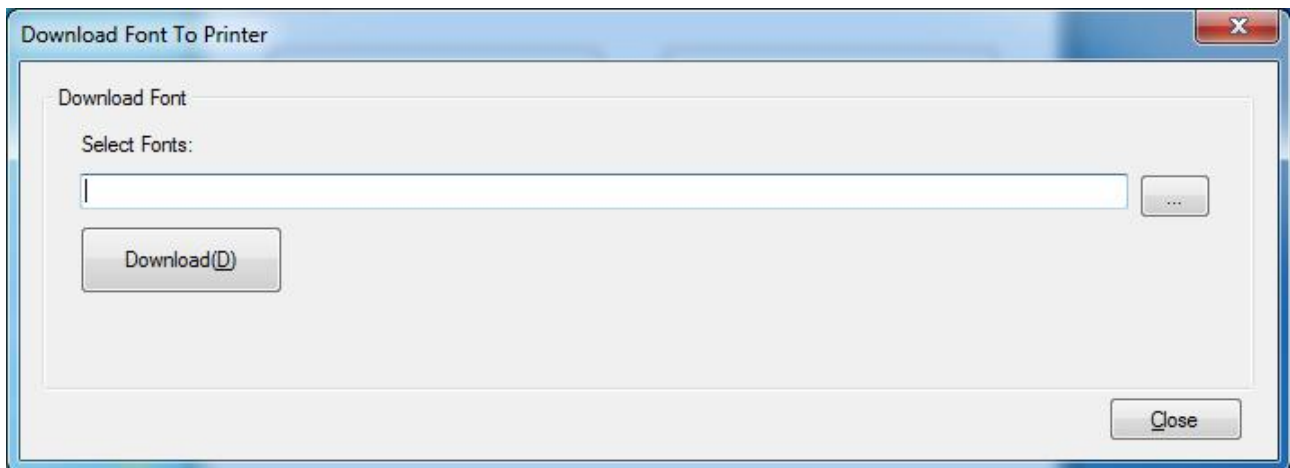
- **Code Page Setting**

Choose the code table from the drop-down menu and click “Setting”.

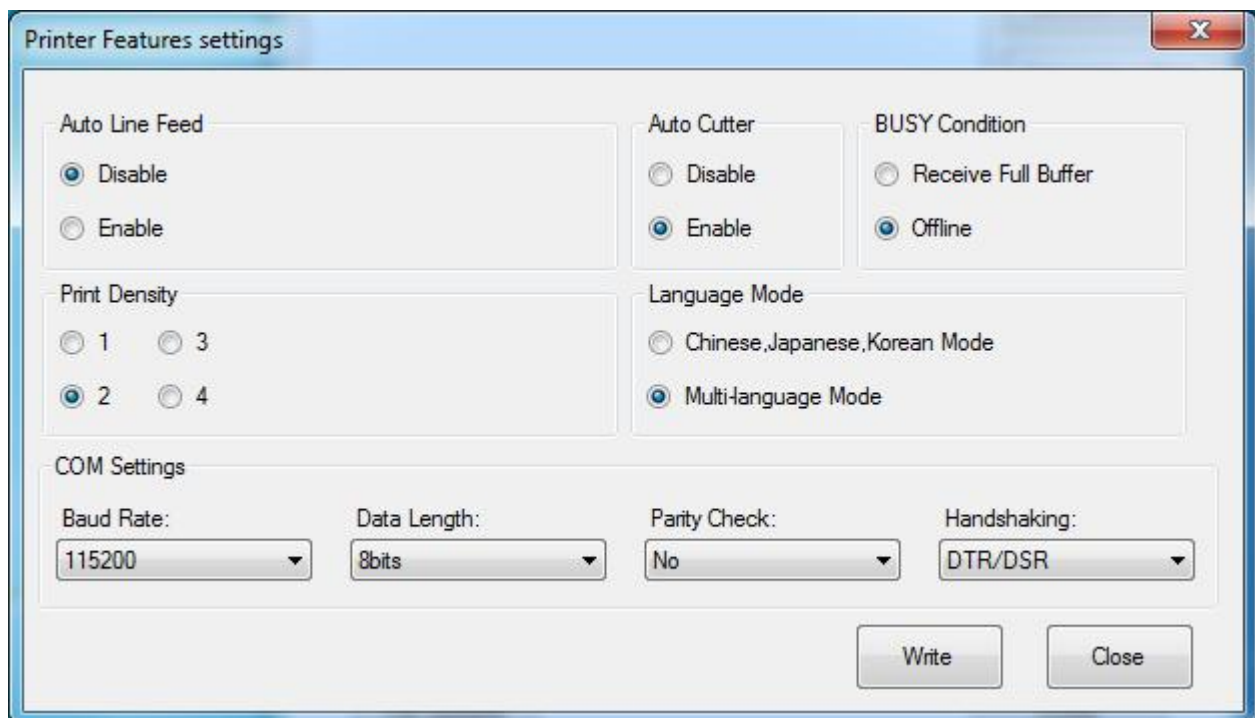


● **Download Fonts**

Choose the font from existing files and click “Download”. If you checked “Print Sample Text After Download”, the printer will print the sample text after downloading the font.

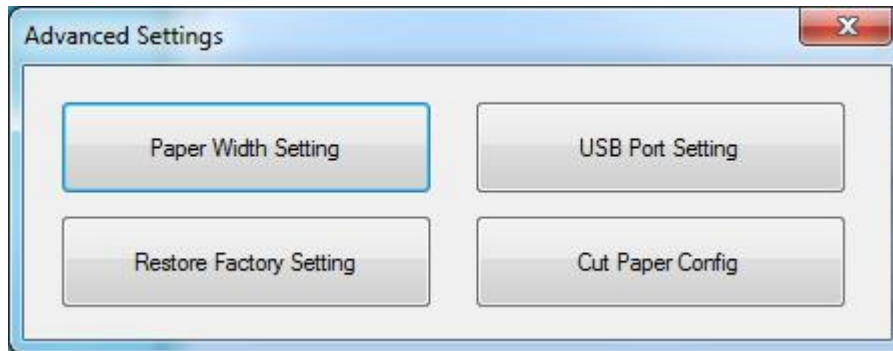


● **Parameter Setting**



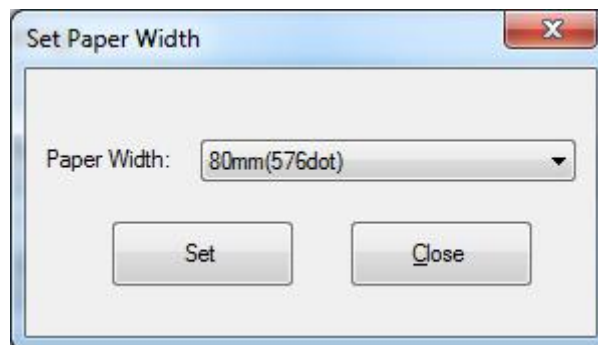
● **Advanced Settings**

Advanced Settings contains three items. Click the button and printer will execute the appropriate action. The change will take into effect after restarting the printer.



◆ **Paper Width Setting**

Choose the item and click "Set".



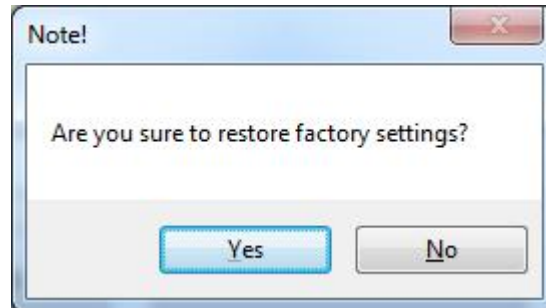
◆ **USB Port Setting**

Choose the item and click "Setting(S)".



◆ **Restore Factory Settings**

Click “Yes” to restore factory settings.



◆ **Cut Paper Config**

Choose the item according to your need.

