



## HOW TO INSTALL CASHDRAWER CABLE

Installationsanleitung  
Drawer-Kabel-Einbau  
P/N E-27-026-16505111  
für MINI POS PS3100

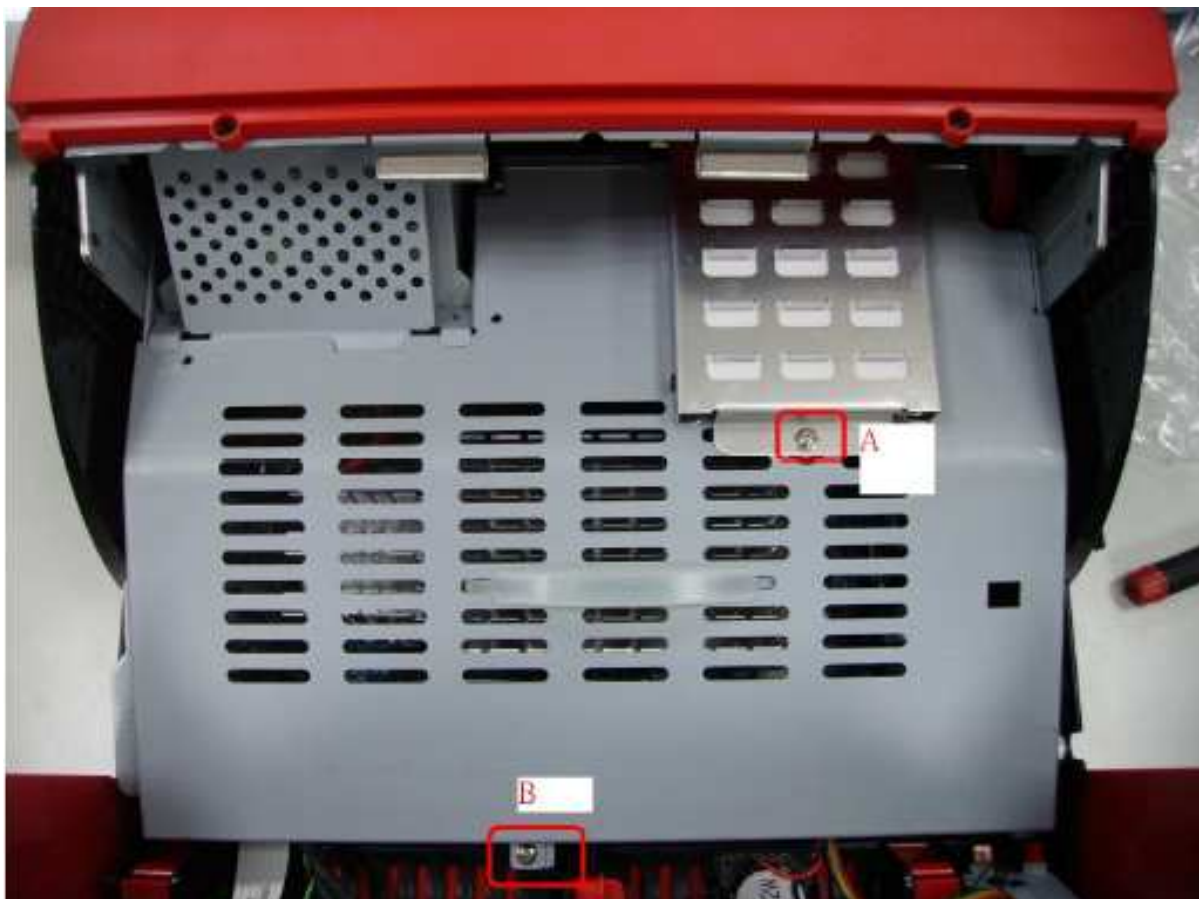
1. Please remove the screw



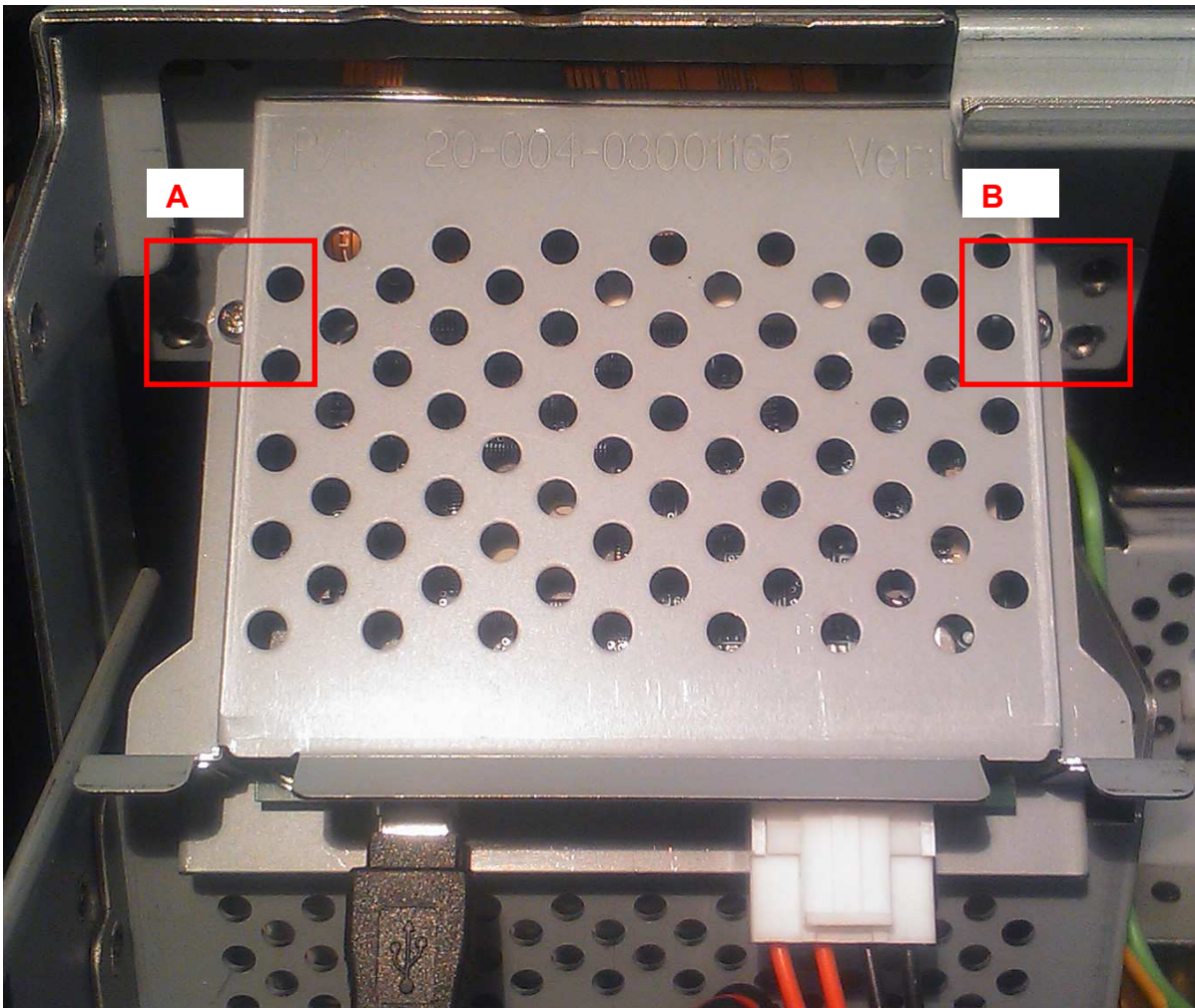
2. Please remove the screw



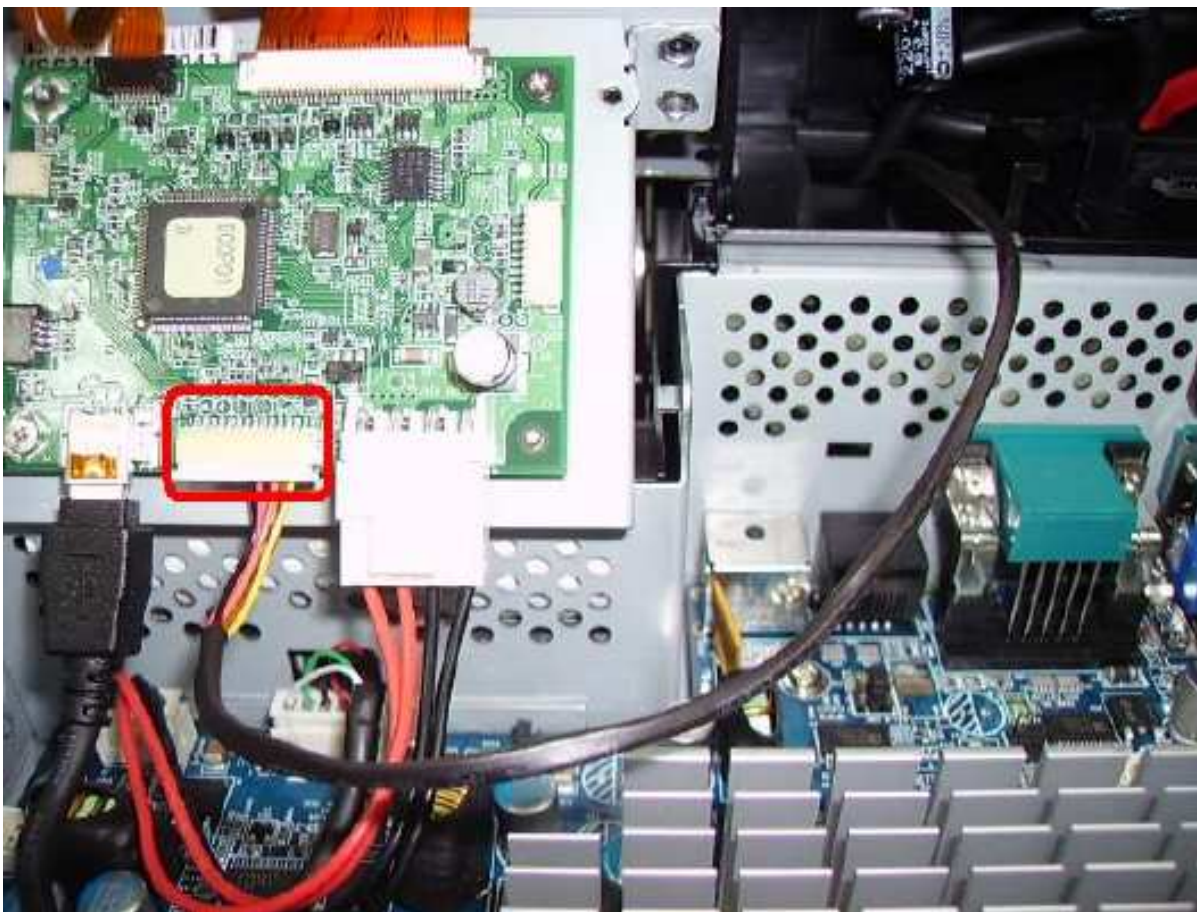
3. Please remove the two screws (A-B), and then take off the cover



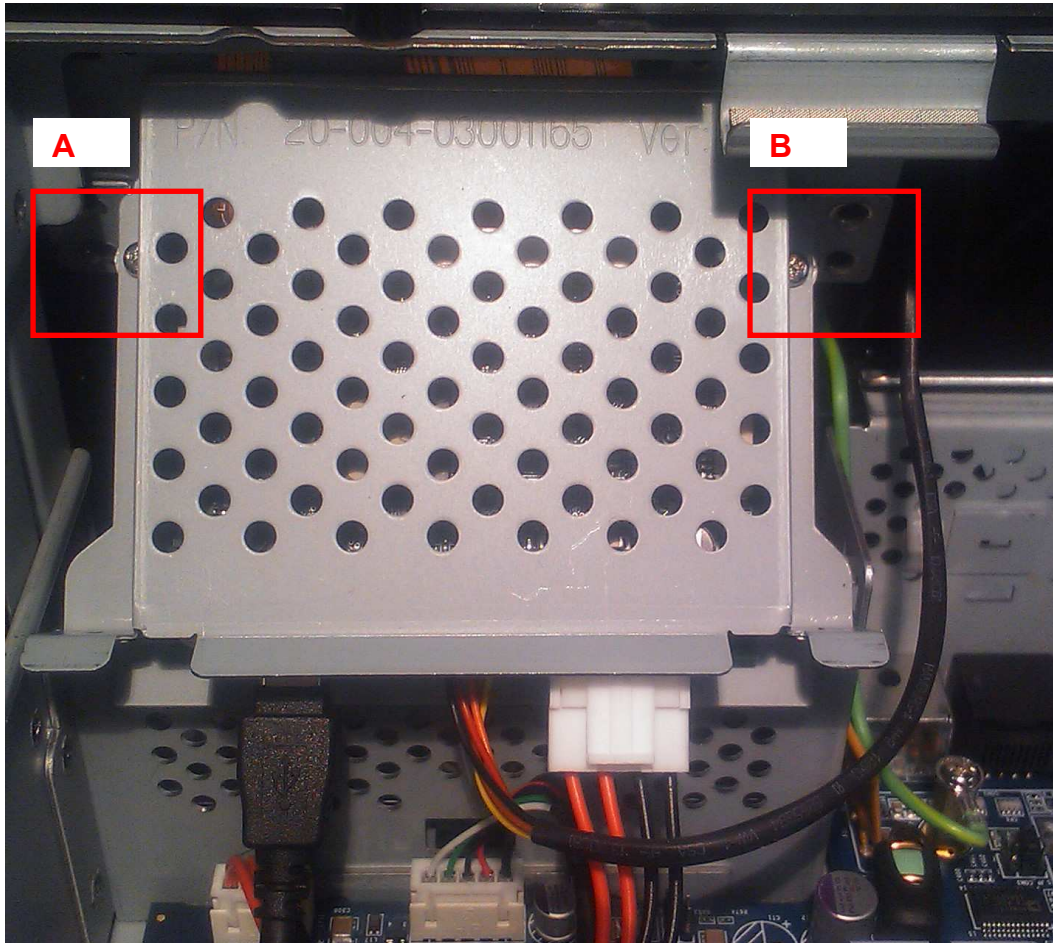
4. Please remove the screws (A-B), and then take off the cover



5. Please plug-in the cashdrawer cable



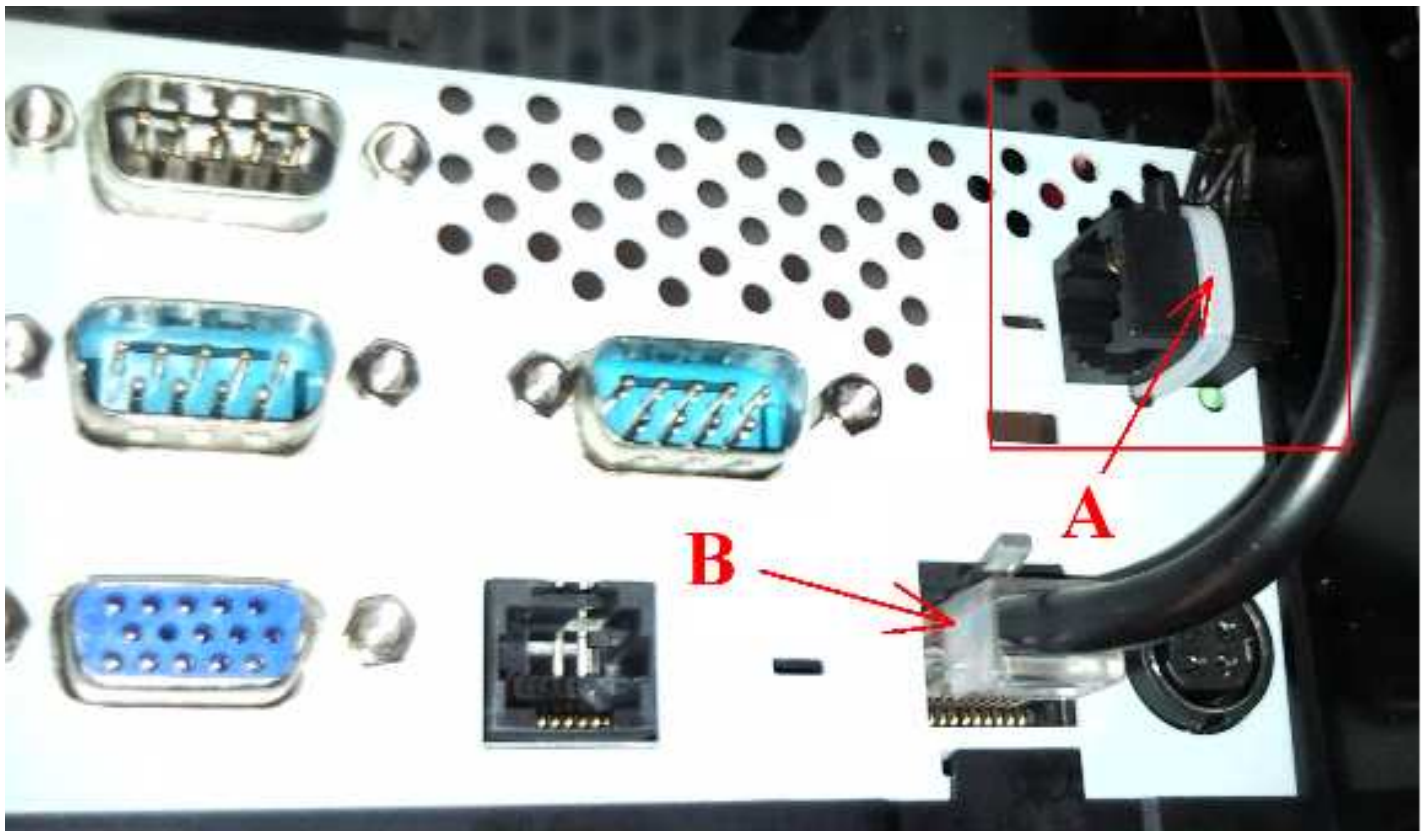
6. Please tight the screws A-B and reinstall cover



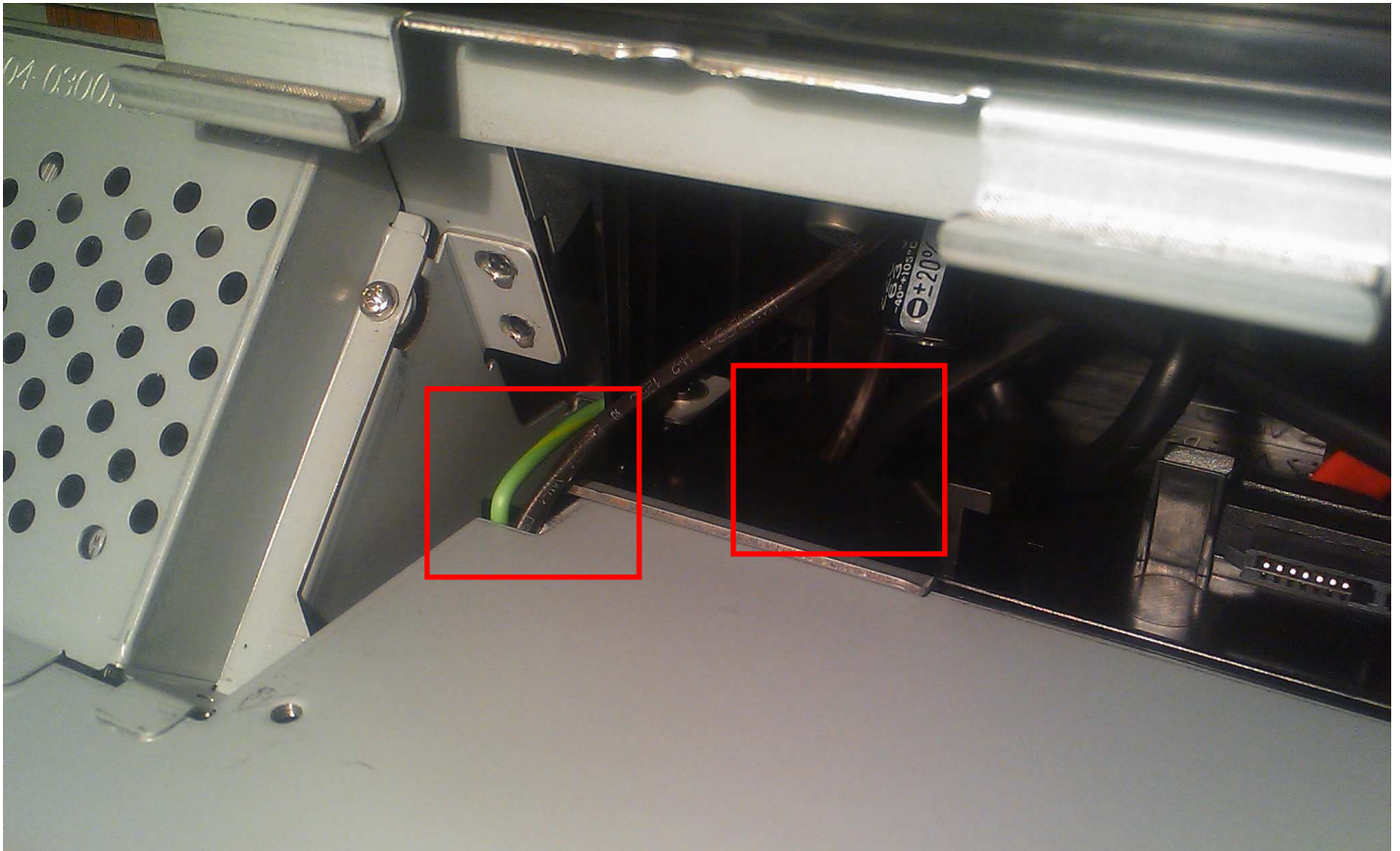
7.

7-1 Please tie the A cable

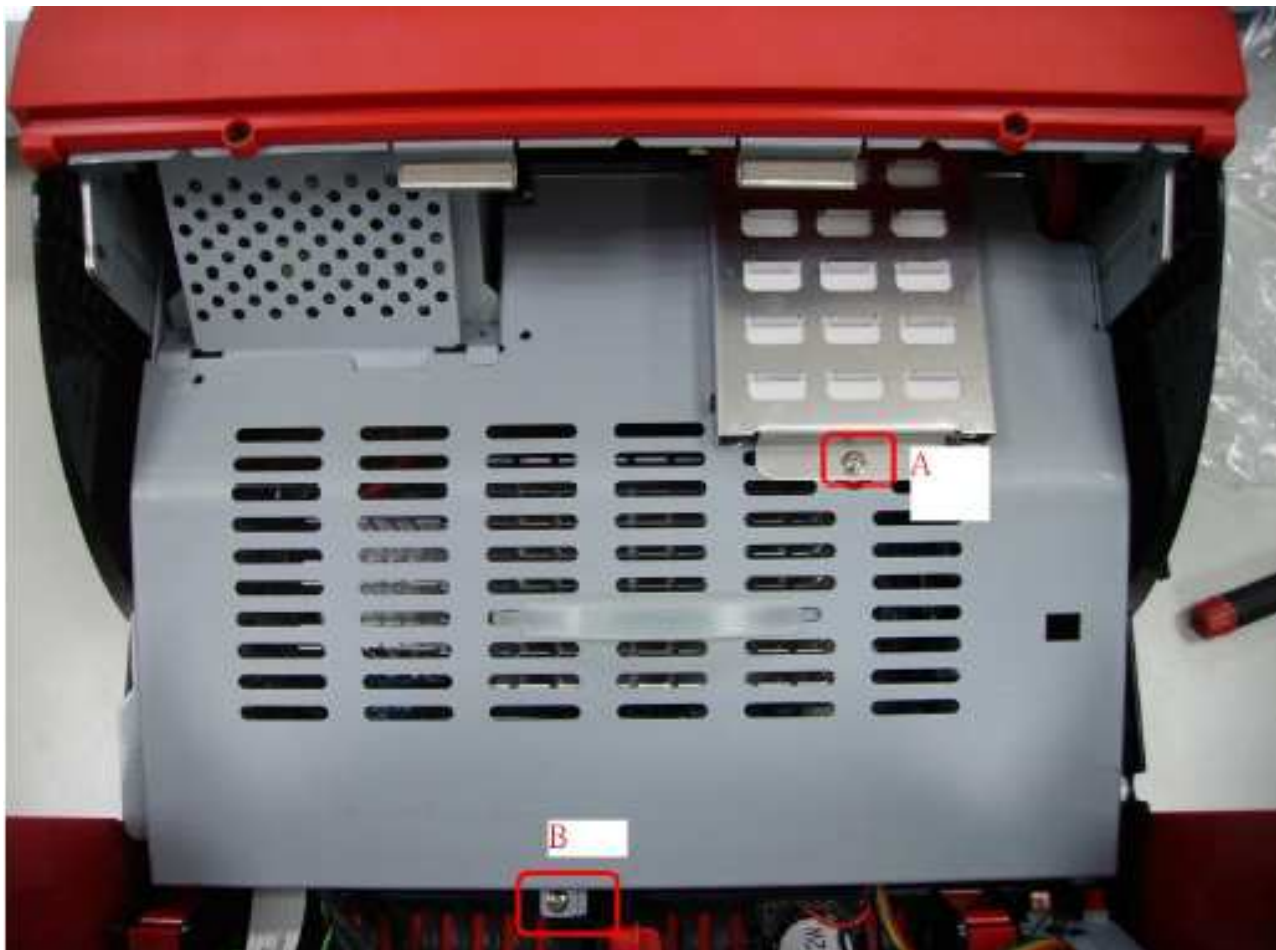
7-2 Please plug-in B socket



8. Please collate the cable



9. Please tight the screws A-B and reinstall cover



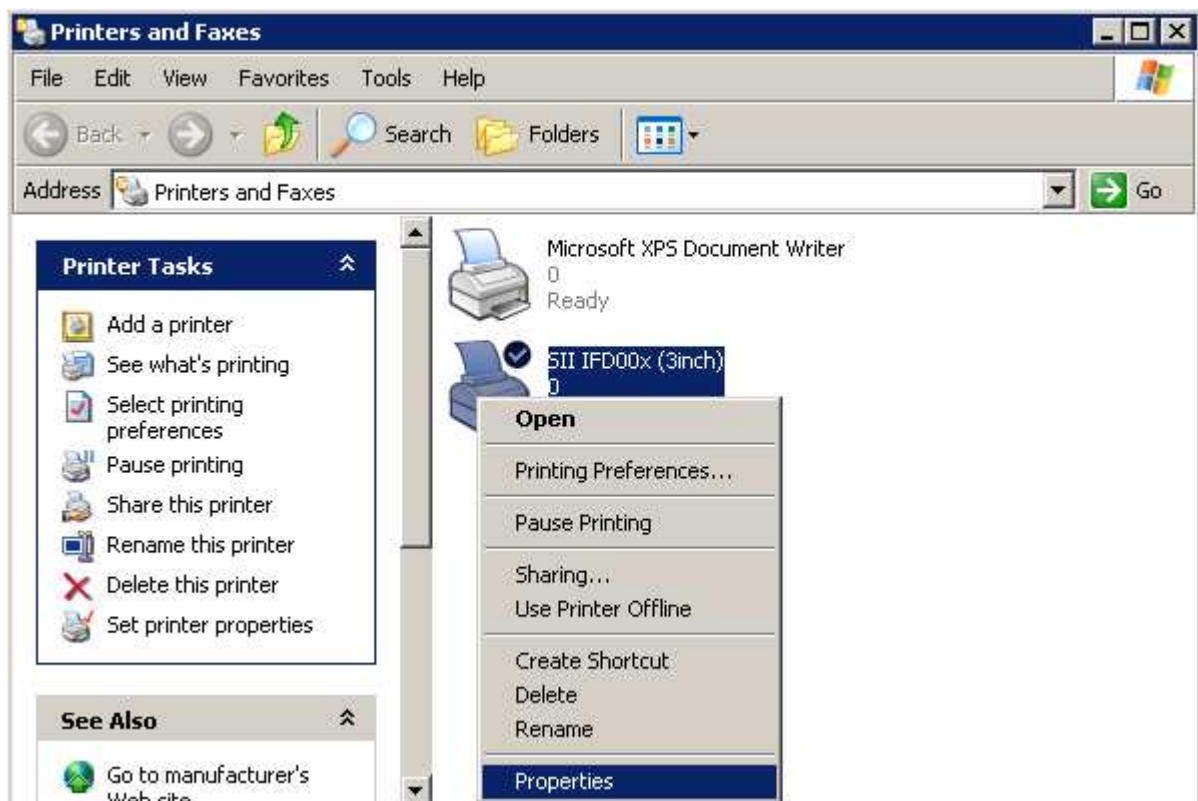
10. Please tight the screw

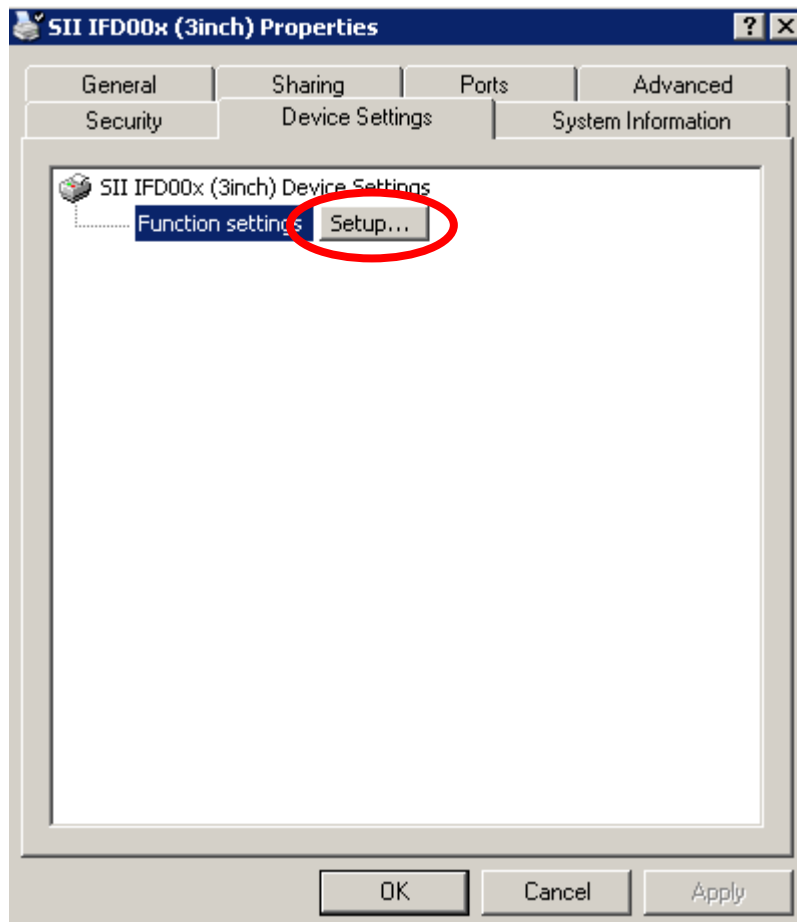
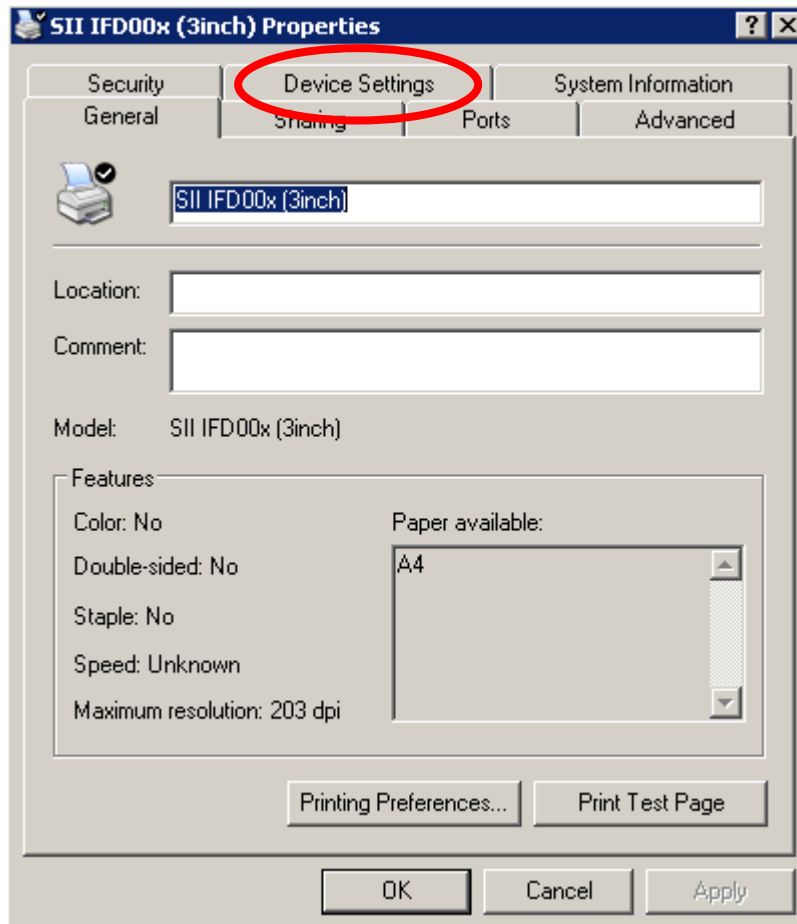


11. Please tight the screw

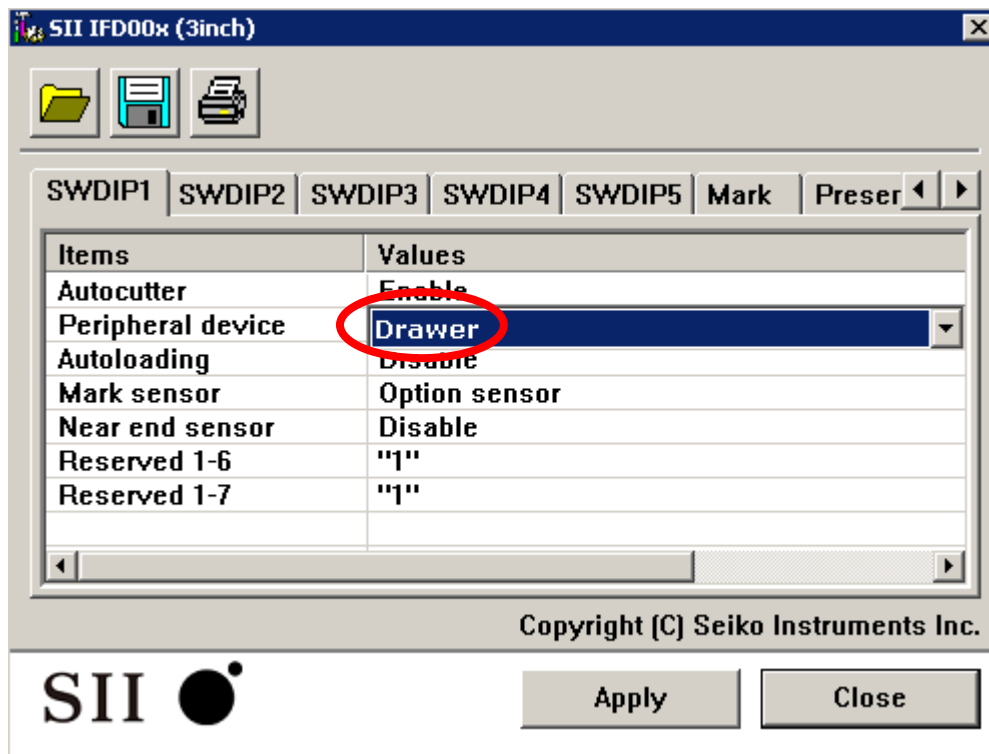


# ACTIVATE DRAWER OUT AT THE PRINTER DRIVER

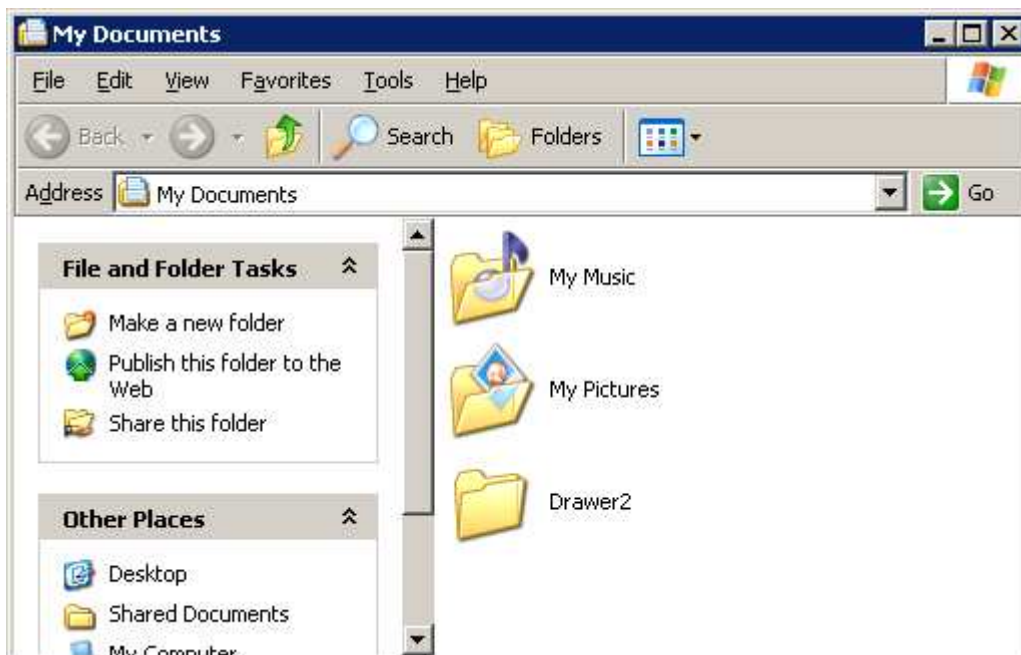


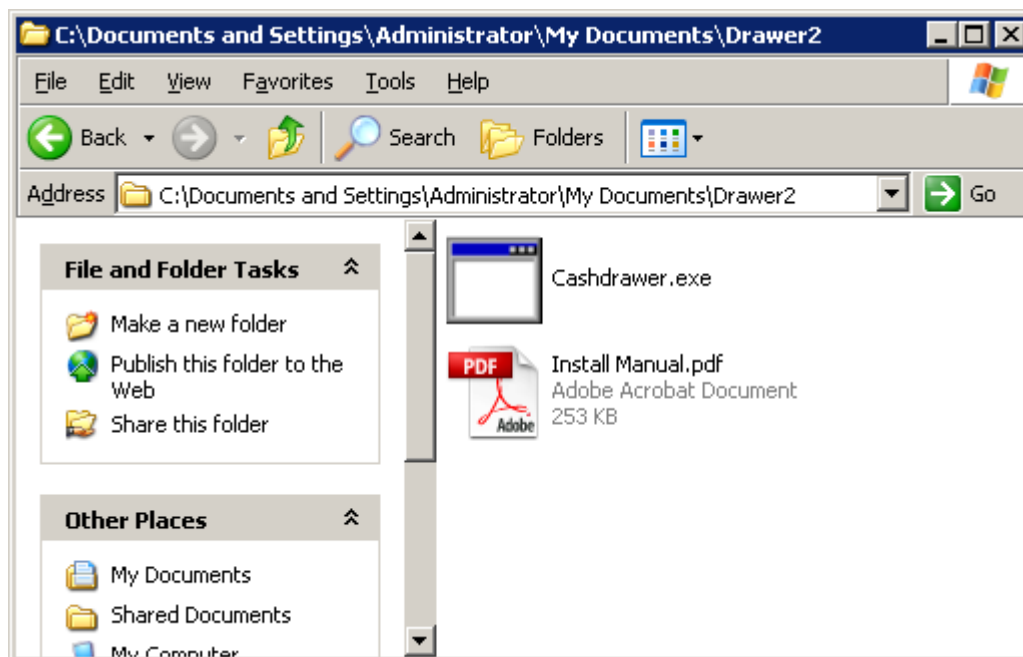






THE DRAWER KICK OUT FILE IS TO FIND UNDER MY DOCUMENTS





**THE „CASHDRAWER.EXE“HAS TO BE IMPLEMENTED INTO THE  
POS – APPLICATION.**

**THAT’S IT**

NOVOPOS AG

12.01.2011 FE