



Zebra[®]

Wireless Configuration for 802.11n and Bluetooth Radios for
Link-OS Mobile Printers

Quick Start Guide



Table of Contents

Proprietary Statement.....2

Introduction.....3

 Applicable Printers.....3

 Utilities Needed.....3

 Equipment Needed.....3

Connecting to the Wireless Network.....4

Configuring Wireless Security Settings.....4

Setting Printer Connectivity without Certificates.....6

Connectivity Setup via Bluetooth.....7

 Advanced Bluetooth Settings.....7

Enabling/Disabling Power Save Mode.....8

 Checking Current Power Save Mode.....8

 Disabling Power Save Mode (Option 1).....9

 Disabling Power Save Mode (Option 2).....9



Proprietary Statement

This manual contains proprietary information of Zebra Technologies Corporation and its subsidiaries (“Zebra Technologies”). It is intended solely for the information and use of parties operating and maintaining the equipment described herein. Such proprietary information may not be used, reproduced, or disclosed to any other parties for any other purpose without the expressed written permission of Zebra Technologies Corporation.

Product Improvements

Since continuous product improvement is a policy of Zebra Technologies Corporation, all specifications and signs are subject to change without notice.

Liability Disclaimer

Zebra Technologies Corporation takes steps to ensure that its published Engineering specifications and manuals are correct; however, errors do occur. Zebra Technologies Corporation reserves the right to correct any such errors and disclaims liability therefrom.

Radio Approvals

Zebra Wireless WLAN printers are only approved for use in certain countries. In no event shall Zebra be liable for uses of Zebra Wireless WLAN printers that are contrary to local law. To determine whether you are allowed to use your Zebra Wireless WLAN printer in a specific country, check to see if the radio type number that is printed on the identification label of your device is listed on the radio approval list posted on the Zebra support site at <http://support.zebra.com/>.

In countries other than the United States and Japan, verify that the Location setting from the Regional Options tab in Regional and Language Options (from Zebra Toolset) has been set to the country in which you are using your Zebra Wireless WLAN printer. This ensures compliance with local regulatory restrictions on transmit power and optimizes network performance. Any deviation from the permissible power and frequency settings for the country of use could be an infringement of local law and may be punished as such.

Limitation of Liability

In no event shall Zebra Technologies Corporation or anyone else involved in the creation, production, or delivery of the accompanying product (including hardware and software) be liable for any damages whatsoever (including, without limitation, damages for loss of business profits, business interruption, loss of business information, or other pecuniary loss) arising out of the use of or the results of use of or inability to use such product, even if Zebra Technologies Corporation has been advised of the possibility of such damages. Because some states do not allow the exclusion of liability for consequential or incidental damages, the above limitation may not apply to you.

Copyrights

The copyrights in this manual, the software in the printer, and the print engine described therein are owned by ZIH Corp. Unauthorized reproduction of this manual or the software in the print engine may result in imprisonment of up to one year and fines of up to \$10,000 (17 U.S.C.506). Copyright violators may be subject to civil liability.

This product may contain CPCL®, ZPL®, ZPL II®, and ZebraLink™ programs; Element Energy Equalizer® Circuit; E3®; and AGFA fonts. All rights reserved worldwide.

ZebraLink and all product names and numbers are trademarks, and Zebra, the Zebra logo, ZPL, ZPL II, Element Energy Equalizer Circuit, and E3 Circuit are registered trademarks of ZIH Corp. All rights reserved worldwide.

Monotype®, Intellifont® and UFST® are trademarks of Monotype Imaging, Inc. registered in the United States Patent and Trademark Office and may be registered in certain jurisdictions.

All other brand names, product names, or trademarks belong to their respective holders.



Introduction

Applicable Printers

The following procedures apply only to Link-OS printers, including QLn220, QLn320, QLn420, iMZ220, and iMZ320.

Utilities Needed

Before you start to configure your printer for use on a Local Area Network (LAN), you will need some basic information which will enable you to establish the network configuration for your printer.

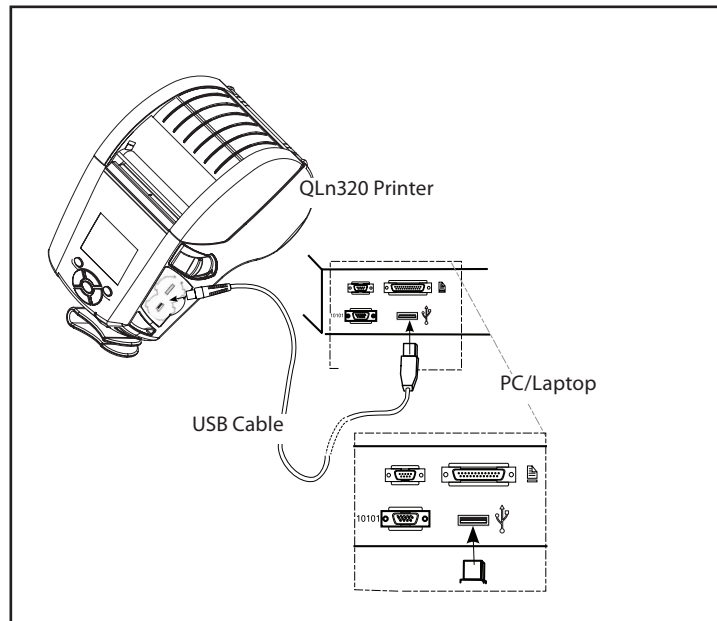
Zebra Setup Utilities provides a quick and easy way to configure your printers for a variety of purposes, including setting them up for wireless communications either on a Local Area Network (LAN) or using the international Bluetooth™ communications standard. The necessary steps for setting up and configuring your printer using Zebra Setup Utilities are contained in this guide.

To download Zebra Setup Utilities to your computer, go to www.zebra.com/setup


Equipment Needed

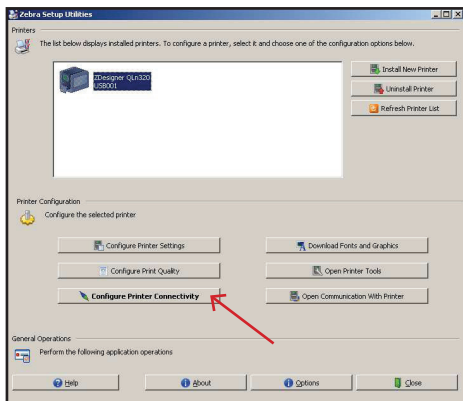
- Printer
- PC or laptop
- USB Cable
- Zebra Setup Utilities installed

Fig. 1: USB Cable Connections

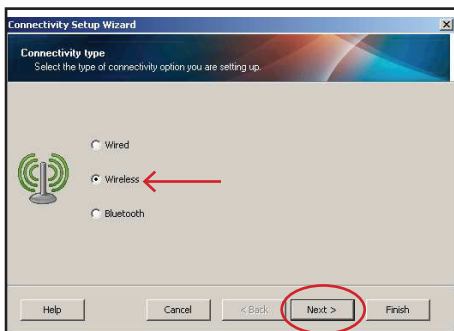


Connecting to the Wireless Network

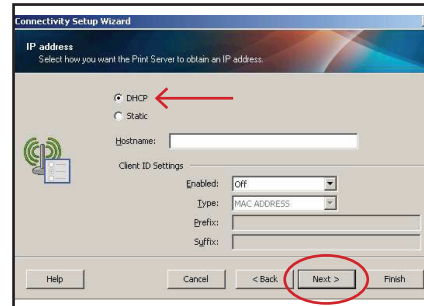
- Double click the Zebra Setup Utilities icon  on your desktop to open.
- Connect a USB cable to both the printer and the PC or laptop (as shown in Fig. 1).
- On the first ZSU screen, highlight the installed printer displayed in the window and click on Configure Printer Connectivity where shown.



- Select "Wireless" on the Connectivity Type screen and click on the Next button.

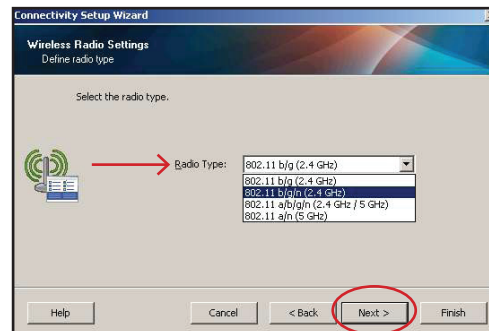


- Select "DHCP" on the IP Address screen and click on the Next button to proceed. (If "Static" is selected, you must enter the IP address manually.)



Selecting Wireless Radio Type and Security Settings

- Select Radio Type from dropdown menu, i.e. 802.11 a/b/g/n and click on the Next button.



Note: If you choose 802.11b/g/n or b/g, you will be limited to 2.4GHz band. If you choose 802.11a/n, you will be limited to 5GHz band. If you choose 802.11a/b/g/n, you will have access to both 2.4GHz and 5GHz bands.



- Select the WLAN country in which your device is operating from the dropdown menu. You also have the option to manually enter a channel or range of channels in the Channel List box (shown below.)



Enter the ESSID number in the appropriate field on the Wireless Settings window. (If ESSID is unknown, consult your local network administrator.)

- Enter Security Mode from the choices in the dropdown menu (e.g. WPA-EAP-TLS/WPA2-EAP-TLS). Other available securities include: WEP 40-bit, WEP 128-bit, EAP-TLS, EAP-TTLS, EAP-FAST, PEAP, LEAP, WPA-PSK/WPA2-PSK, WPA-EAP TTLS/WPA2-EAP-TTLS, WPA-EAP-FAST/WPA2-EAP-FAST.

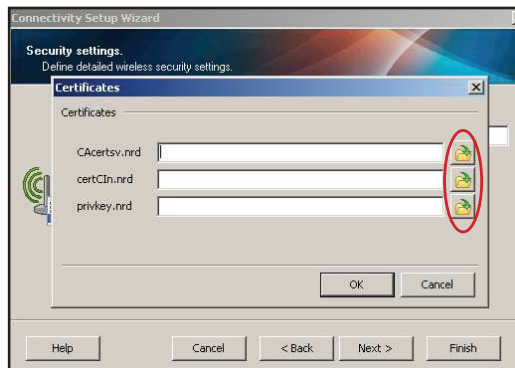


- Click Next button.

- Enter Optional Private Key Password (if applicable) where shown.
- Click on Certificates button (circled) to bring up the Certificates window.



- Click on the folder icons (circled) next to each entry field to upload appropriate certificates, e.g. root, client, private key, etc.
- Click OK to return to the Security Settings window and click Next to get to the Advanced Wireless Settings window.



- If your private key is encrypted, you must enter a passphrase to decrypt it as shown below. If your private key is not encrypted, leave this field blank.



Setting Printer Connectivity without Certificates

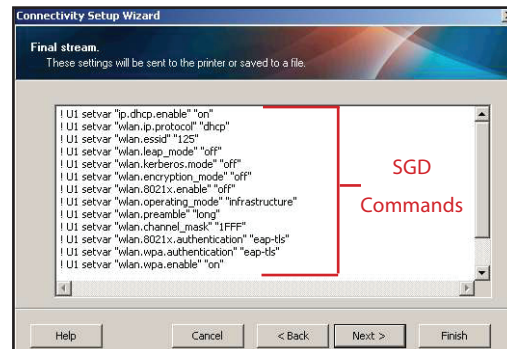
Follow the previously described steps until you get to the Wireless Settings screen.

- Enter ESSID as previously instructed.
- When selecting a Security Mode from the dropdown menu that doesn't require certificates (e.g. WPA-PEAP as shown), the Security Username and Security Password fields will become active.
- Obtain a Security Username and Security Password from your network administrator and enter in the appropriate field where shown.

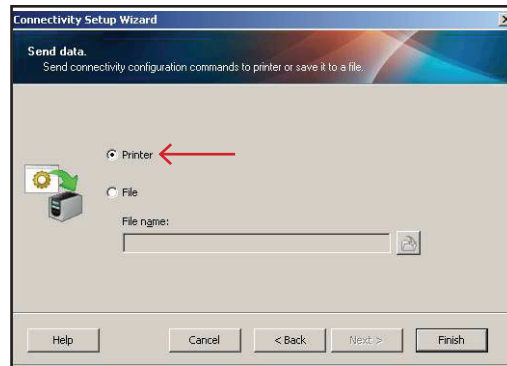


- Click Next to proceed to the Advanced Wireless Settings window and follow the remaining steps outlined above.


- The Final Stream window displays the applicable Set/Get/Do commands based on your previous selections.
- Click Next to proceed to the Send Data screen.

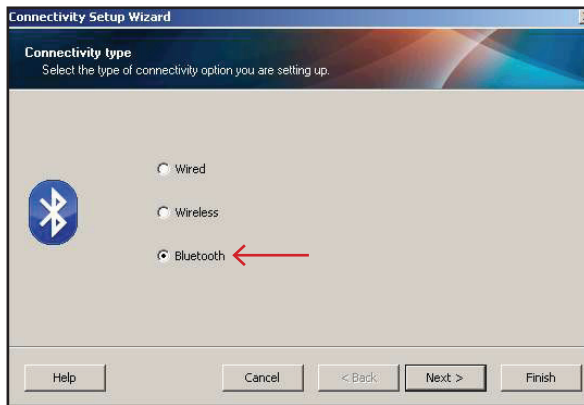


- Click on Printer to send connectivity configuration commands to the printer. Otherwise, click on File to save the commands on your computer.
- Click Finish and the printer will update and reboot.



Connectivity Setup via Bluetooth

- Double click the Zebra Setup Utilities icon  on your desktop to open.
- Connect a USB cable to both the printer and the PC or laptop (as shown in Fig. 1).
- On the first ZSU screen, highlight the installed printer displayed in the window and click on Configure Printer Connectivity where shown.
- Select "Bluetooth" on the Connectivity Type screen and click on the Next button.

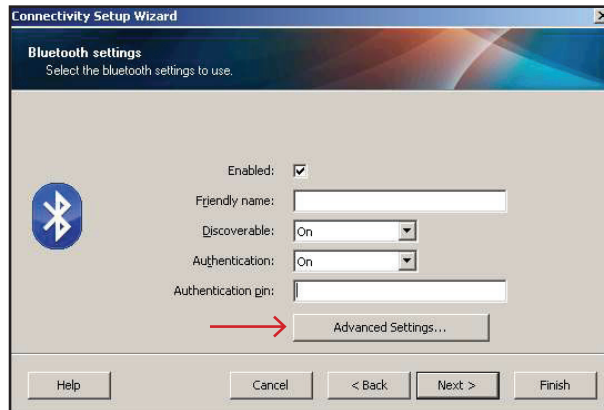


- On the Bluetooth Settings screen, check "Enabled" to enable Bluetooth functionality.
- In the Friendly Name text field, set the Bluetooth name of the device. This appears during inquiry (discovering Bluetooth devices) and the master device will label the device with this name.
- Set Discoverable to "On" or "Off" to set whether the device will appear in Bluetooth discovery run on another device.
- Set Authentication to "On". (This setting does not exist in Link-OS, but you need to turn it on if you want to enter a PIN in ZSU. Actual authentication setting on the printer is handled in Security Mode in Advanced Settings menu.)

- After setting Authentication to "On", the following should be entered in Authentication PIN text field:

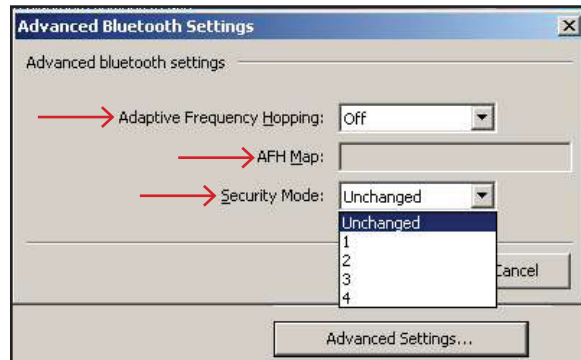
1) If master device is BT 2.0 or older: This is the PIN that will need to be entered on the master device to security pair with the printer. Security Mode 2 or 3 in Advanced Settings should also be selected for PIN pairing.

2) If master device is BT 2.1 or newer: This setting has no effect. Secure Simple Pairing does not use a static PIN.



Advanced Bluetooth Settings

- Click on Advanced Settings button on the Bluetooth Settings screen where shown above to navigate to the Advanced Bluetooth Settings window.



- In the Advanced Bluetooth Settings window, set Adaptive Frequency Hopping to “Off”. This is not part of Link-OS since AFH is now done automatically. This also holds true for the AFH Map text field.
- Security Mode sets the minimum security mode at which the printer will connect. The master actually dictates the security mode and the printer will agree to connect at a higher security. Security Mode numbers are as follows:

A) If master device is BT 2.0 or older:

- Security Mode 1: Unencrypted (no PIN necessary, although not harmful if set)
- Security Mode 2: Profile-level encryption (requires PIN, all user data is encrypted, Bluetooth setup/management commands are not)
- Security Mode 3: Link-level encryption (requires PIN, user data and Bluetooth management commands are encrypted)
- Security Mode 4: N/A (printer will not connect to BT 2.0 master if this is set)

B) If master device is BT 2.1 or newer:

- Secure Simple Pairing (mode 4) will always be used if both devices are BT 2.1 or newer (which is the case with Link-OS printers). Select “Unchanged” in the Security Mode dropdown if both devices are BT 2.1 or newer. If the user wants to connect to both BT 2.0 and 2.1 devices, they should follow the BT 2.0 instructions above.

- Click OK to return to the Bluetooth Settings window and then click Next.
- The SGD’s that will be sent to the printer or saved to a file will be presented in the Final Stream window.
- Click Next to proceed to the Send Data screen.
- Click on Printer to send connectivity configuration commands to the printer. Otherwise, click on File to save the commands on your computer.
- Click Finish and the printer will update and reboot.

Once the printer reboots, SGD’s that are not available in the Final Stream window (like the following two examples) can be added to the settings list by following the steps in the Enabling/Disabling Power Save Mode section below.

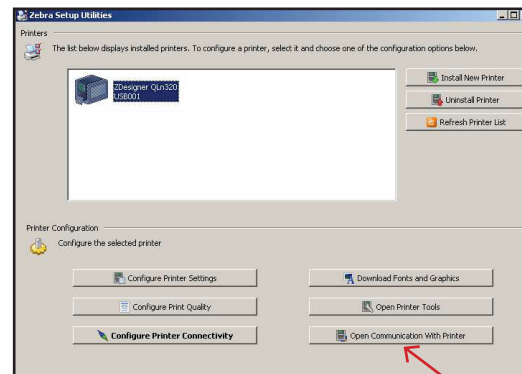
- ! U1 setvar “bluetooth.bonding” “on”/“off” (default to “On”). This enables or disables Bluetooth bonding which allows the printer to cache the connection link key so users do not have to go through the pairing process (e.g. numeric comparison for BT 2.1) every time a connection is established. Users will generally want to leave this on.
- ! U1 do “bluetooth.clear_bonding_cache” “” This clears the Bluetooth bonding cache, equivalent to unpairing/“forget this device” on the master.

Enabling/Disabling Power Save Mode

This parameter refers to the power save modes which affect power consumption of the network radio card in the printer. Power Save in the 802.11n radio can either be set to “on” or “off” with a default value of “on”.

Checking Current Power Save Mode

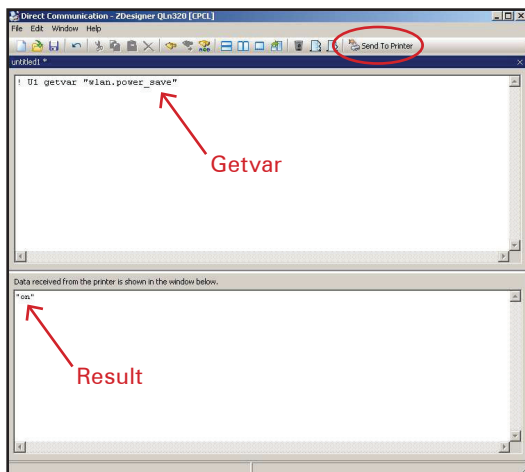
- Open Zebra Setup Utilities and click on the Open Communication with Printer button (where shown).



- This will open the Direct Communications dialogue box which allows the user to input setvar and getvar commands to the printer.
- In the top window of the Direct Communications dialogue box, type the below command followed by a space:

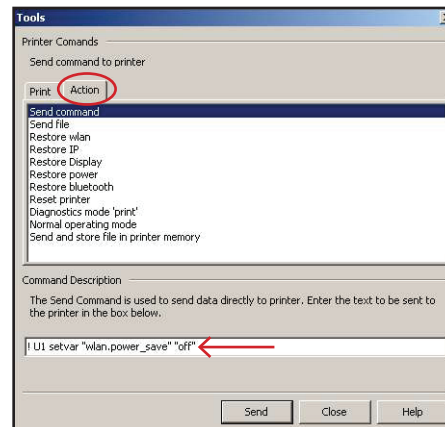
`! U1 getvar "wlan.power_save"`

- Click on the Send To Printer button (circled) and the resulting data received from the printer (i.e. ON or OFF) will appear in the bottom window (as shown).



Disabling Power Save Mode (Option 1)

- Click on Open Printer Tools button located on Zebra Setup Utilities home screen.
- Click on the Action tab (circled) in the Tools window and highlight Send Command (as shown).



- In the Command Description box, type the following setvar command followed by a space:

`! U1 setvar "wlan.power_save" "off"`

- Click on the Send button to transmit the command data to the printer.
- To validate that Power Save was disabled, follow the steps detailed in Checking Current Power Save Mode on Page 6.

Disabling Power Save Mode (Option 2)

- Open the Direct Communications dialogue box as described previously.
- In the top window, type the following setvar command followed by a space:

`! U1 setvar "wlan.power_save" "off"`

- Click on Send To Printer button and the resulting data (i.e. OFF) will appear in the bottom window.

continued



**Wireless Configuration
OSG for 802.11n & Bluetooth
Radios for Link-OS Mobile Printers**



Zebra Technologies Corporation

475 Half Day Road, Suite 500

Lincolnshire, IL 60069

Phone: +1 847.634.6700

Toll Free: +1 800.423.0442

Fax: +1 847.913.8766