

# PP-9735W



- XPPC continues the XPOS's DNA, keep it slim and dual-hinge design.
- Using Intel Elkhart Lake 10th Generation Processor & Support High-speed PCIe M.2 SSD.
- Adjustable angle and height improve the viewing angle, enhance the user experience, can also be Desktop, Pole or Wall-mounted.
- Easy for maintenance: Easy to access DRAM/ SSD/ MB.
- Shared Peripherals: Share the same peripherals with XPOS.

## 01/ ECO-FRIENDLY

Reduce the size and package to save the environment and for easier transportation

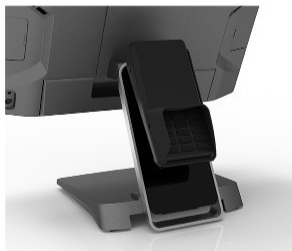


## 02/ WITH PAYMENT EFT / SCANNER

Two ways for add-on device settlement.



Arm type  
Barcode Scanner



Payment Device



RFID Device

## 03/ 2nd Display

Arm / Pole Type for different countertop



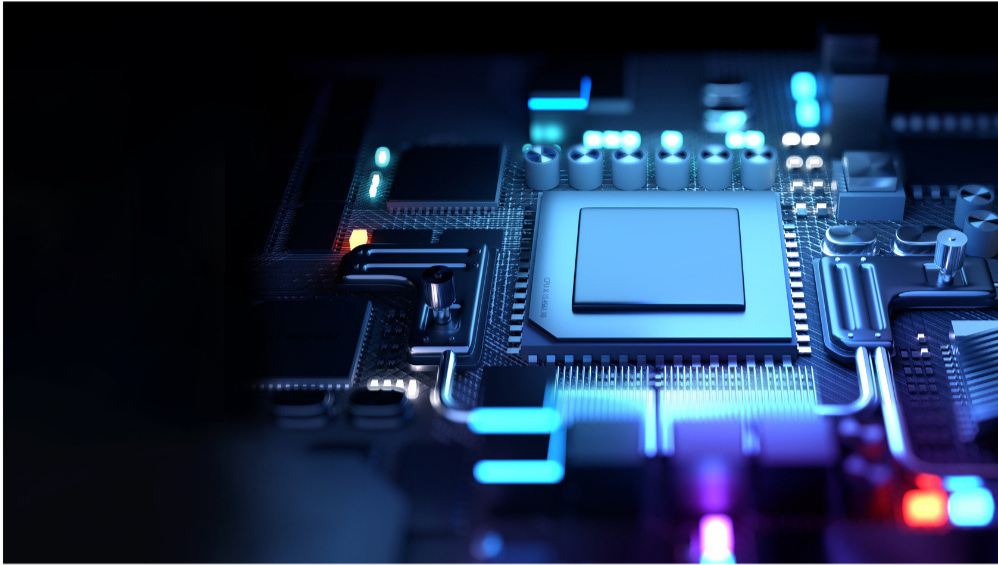
## 04/ SENSOR

Ambient light sensor allows system automatically adjust the brightness of the screen according to the environment.



# 05/ Processor J6412

Fanless CPU For Complex solution.



# Spezifikationen

## CPU

- Intel® Celeron® J6412 1.5M Cache, 3.00GHz

## Memory

- 8GB Standard, Max 32GB (2 x So-DIMM DDR4)

## Storage

- 1 x M.2 M Key (SATA III or PCIe) 256GB

## Connection

- 1 x M.2 E Key 802.11ac + BT (Optional)

## Speaker

- 2 x 2W Internal Speaker

## Display

- 15.6" TFT, 1920 x 1080

## Touch

- True-Flat PCAP

## Brightness

- 300 nits

## Camera

- 2MP Front Camera (Optional)

## Power

- 20V / 90W or 130W External Adapter

## OS

- Windows 10 Enterprise (LTSC, SAC)
- Windows 11 Enterprise
- Linux

## Mounting

- VESA 100 x 100 mm

## Certification

- FCC / CE Class B

## Appearance

- Aluminum Die-Casting + Plastic
- Galaxy Grey + Sliver

## Temperature

- Operation: 0°C ~ 40°C (32°F ~ 104°F)
- Storage: -20°C ~ 60°C (-4°F ~ 130°F)

## Dimensions (W x H x D)

- Product: 368 x 272.5 x 315 mm
- Carton: 492 x 168 x 488 mm

## Weight

- Net 3.92 KG,
- Gross 6.7 KG

## Port

- 1 x RJ11 (12V / 24V) Cash Drawer
- 2 x RJ45 (COM1, COM2) RS232
- 4 x USB Type A ( 3 x USB 2.0, 1 x USB 3.0)
- 1 x RJ45 GigaLAN
- 1 x Video Port
- 1 x 12V DC-In
- 1 x Smart DD
- 1 x Smart I/O (Reserved for additional DC output 5V/12V/24V, USB, or Com ports)

## Optional

- Universal I/O (Select 1 from below)
- 1 x PUSB 24V
- 1 x PUSB 12V
- 1 x RJ45 (COM) RS232
- 2 x USB 2.0 TypeA