

NOVOPOS

best trail for retail

PP-9735



- XPPC continues the XPOS's DNA, keep it slim and dual-hinge design.
- Using Intel Elkhart Lake 10th Generation Processor & Support High-speed PCIe M.2 SSD.
- Adjustable angle and height improve the viewing angle, enhance the user experience, can also be Desktop, Pole or Wall-mounted.
- Easy for maintenance: Easy to access DRAM/ SSD/ MB.
- Shared Peripherals: Share the same peripherals with XPOS.

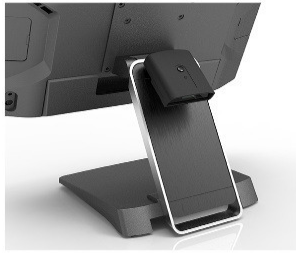
01/ **ECO-FRIENDLY**

Reduce the size and package to save the environment and for easier transportation

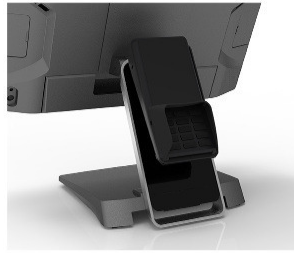


02/ WITH PAYMENT EFT / SCANNER

Two ways for add-on device settlement.



Arm type
Barcode Scanner



Payment Device



RFID Device

03/ 2nd Display

Arm / Pole Type for different countertop



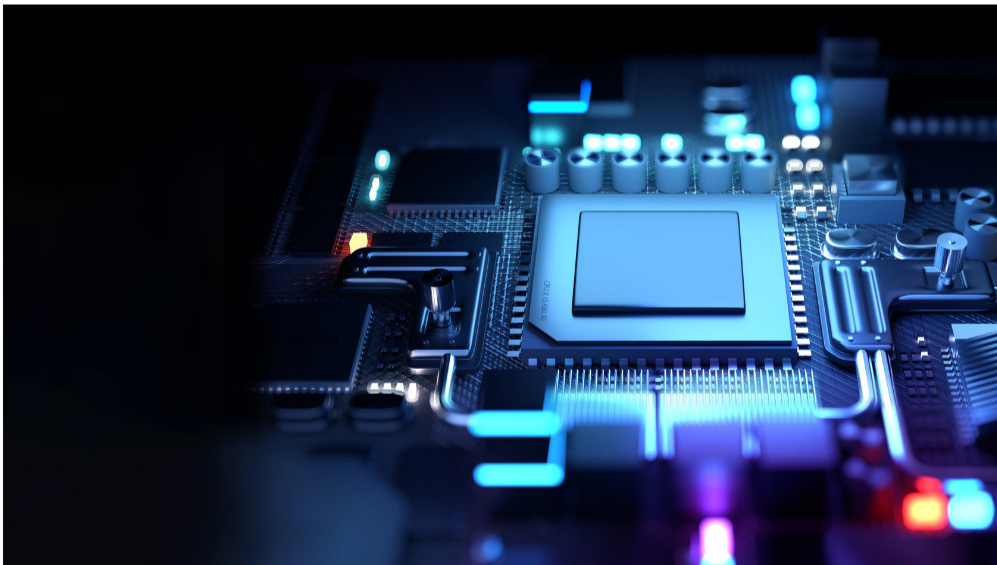
04/ SENSOR

Ambient light sensor allows system automatically adjust the brightness of the screen according to the environment.



05/ Processor J6412

Fanless CPU For Complex solution.



Spezifikationen

CPU

Intel® Celeron® J6412 1.5M Cache, 3.00GHz

Memory

8GB Standard, Max 32GB (2 x So-DIMM DDR4)

Storage

1 x M.2 M Key (SATA III or PCIe) 256GB

Connection

1 x M.2 E Key 802.11ac + BT (Optional)

Speaker

2 x 2W Internal Speaker

Display

15" TFT, 1024 x 768

Touch

True-Flat PCAP

Brightness

400 nits

Camera

2MP Front Camera (Optional)

Power

20V / 90W or 130W External Adapter

OS

Windows 10 Enterprise (LTSC, SAC)
Windows 11 Enterprise
Linux

Mounting

VESA 100 x 100 mm

Certification

FCC / CE Class B

Appearance

Aluminum Die-Casting + Plastic
Galaxy Grey + Silver

Temperature

Operation: 0°C ~ 40°C (32°F ~ 104°F)
Storage: -20°C ~ 60°C (-4°F ~ 130°F)

Dimensions (W x H x D)

Product: 342 x 310 x 342 mm
Carton: 492 x 168 x 488 mm

Weight

Net 3.42 KG,
Gross 6.2 KG

Port

1 x RJ11 (12V / 24V) Cash Drawer
2 x RJ45 (COM1, COM2) RS232
4 x USB Type A (3 x USB 2.0, 1 x USB 3.0)
1 x RJ45 GigaLAN
1 x Video Port
1 x 12V DC Output
1 x 12V DC-In
1 x Smart DD
1 x Smart I/O (Reserved for additional DC output 5V/12V/24V, USB, or Com ports)

Optional

Universal I/O (Select 1 from below)
1 x PUSB 24V
1 x PUSB 12V
1 x RJ45 (COM) RS232
2 x USB 2.0 TypeA